



# W1GL & W2GL

W SERIES







## MODELS

### **W1GL**

single leaf, double acting

### **W2GL**

double leaf, double acting



MODELS

**W1GL**

**W2GL**

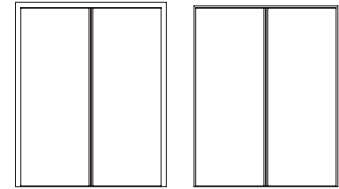
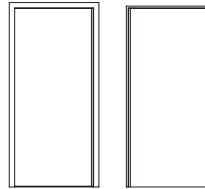
## description

Double acting metal door with frame made of bended electro-zinc coated steel profiles (1.5mm thickness), welded to each other.

The leaf is made of two electro-zinc coated steel panels (0.8mm thickness) and it contains thermal insulating materials according to TRIA constructive system. In leaf's top is incorporated a pivot (per leaf) that ensures a balanced rotation.

The hydraulic door closer embedded in the pavement works as a lower pivot, allowing the double action movement (swinging) and stopping in the middle point, when the door is closed.

## specification



model | typology

**W1GL** | double action single door

**W2GL** | double action double door

## fire resistance classification

	both faces	both faces
FR integrity (En 1634-1) <sup>(1)</sup>	E60	E60
FR integrity and insulation (EN 1634-1) <sup>(1)</sup>	EI <sub>2</sub> 60	EI <sub>2</sub> 45
radiation (EN 1634-1)	EW60	EW60

<sup>(1)</sup> classification according to standard EN 13501-2

## leaf dimensions (mm)

W x H (standard) <sup>(2)</sup>	800 / 900 x 2000 / 2100	1400 / 1600 / 1800 x 2000 / 2100
W maximum (per leaf) <sup>(3)</sup>	1035	2070
H maximum (per leaf) <sup>(3)</sup>	2415	2415
maximum area m <sup>2</sup>	2.27 m <sup>2</sup>	4.54 m <sup>2</sup>
external frame (standard)	L + 216 x H + 60	L + 312 x H + 60
other dimensions	upon request	upon request

<sup>(2)</sup> W x H = width x height = free passage

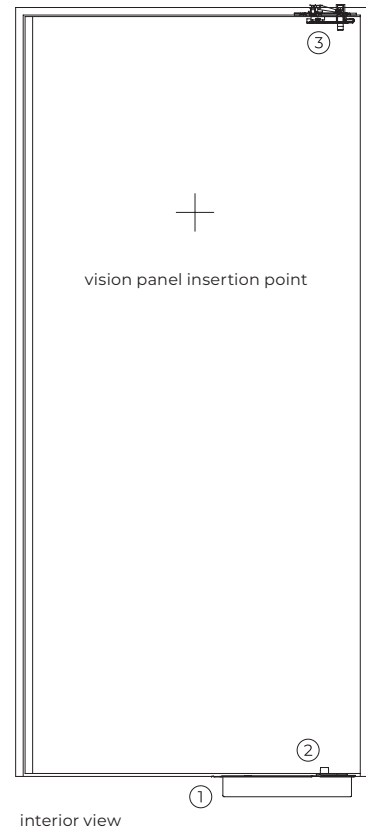
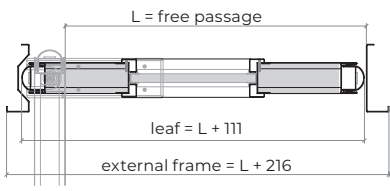
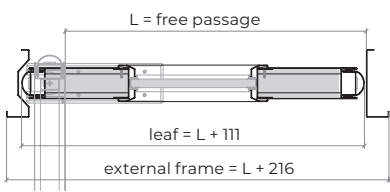
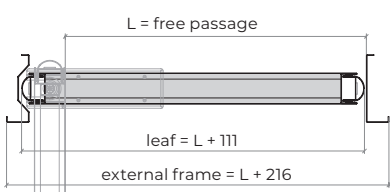
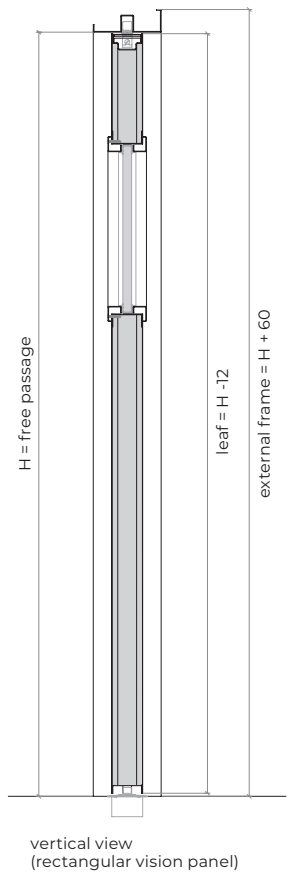
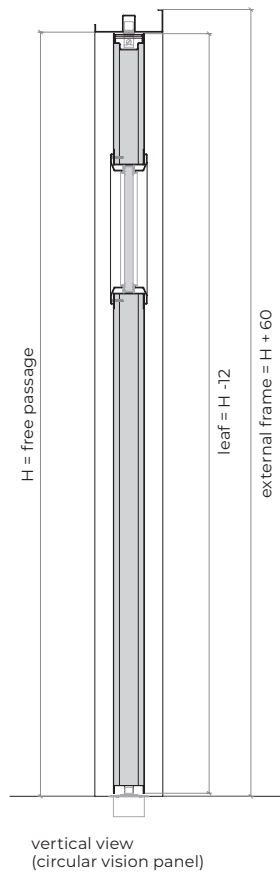
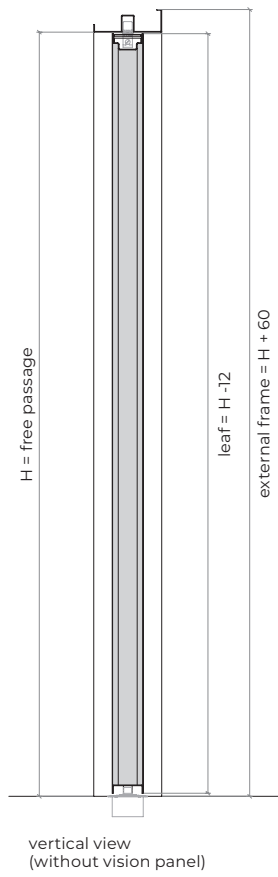
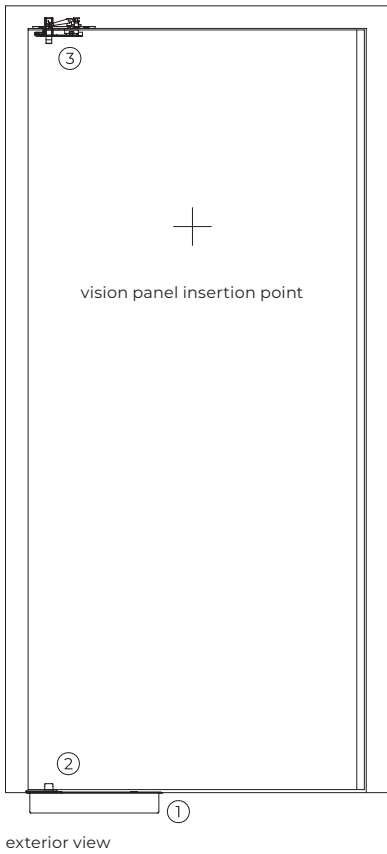
<sup>(3)</sup> width and height should be considered in conjunction with the indicated maximum area

## construction

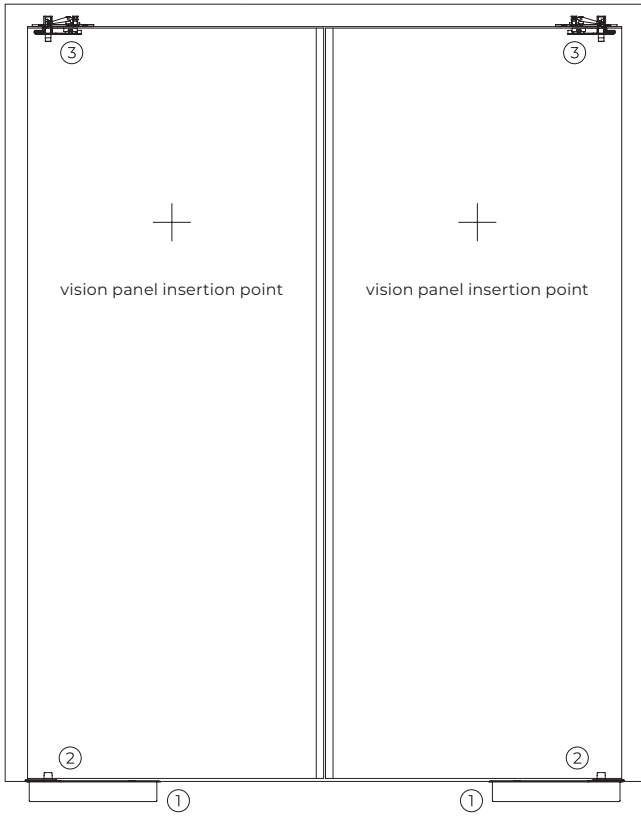
leaf thickness (mm)	82	82
leaf weight (kg / m <sup>2</sup> )	75	75
pivot (per leaf)	1	1
standard vision panel (mm)	Ø 300 / 300 x 400	Ø 300 / 300 x 400
finishing (standard)	electro-zinc coated steel for painting/ lacquering in standard RAL color <sup>(4)</sup>	electro-zinc coated steel for painting/ lacquering in standard RAL color <sup>(4)</sup>
finishing (optional)	stainless steel <sup>(5)</sup>	stainless steel <sup>(5)</sup>

<sup>(4)</sup> standard RAL colors= 7035, 7038, 9005 e 9010

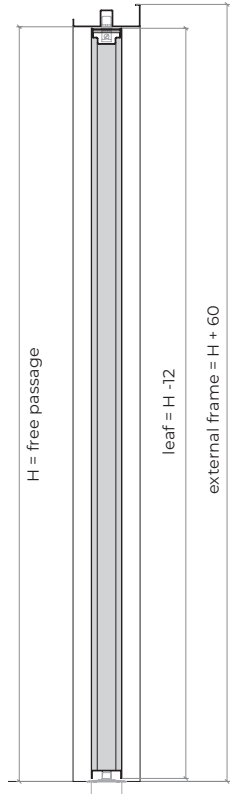
<sup>(5)</sup> finishing only possible for multipurpose option



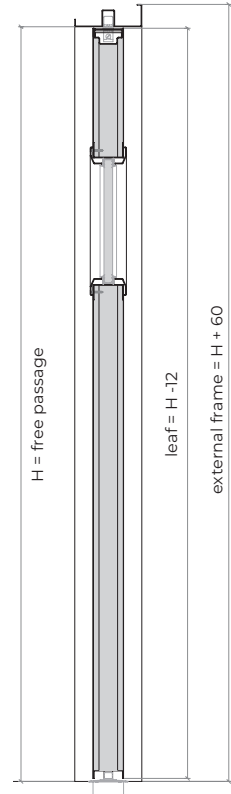
WTGL



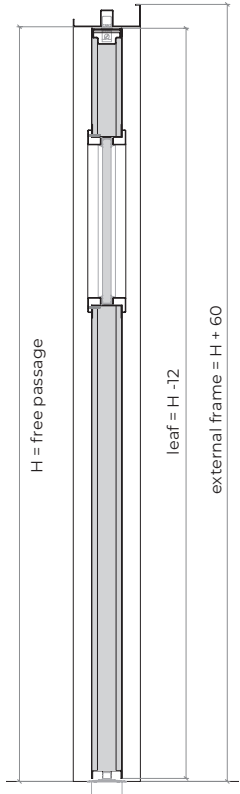
exterior view



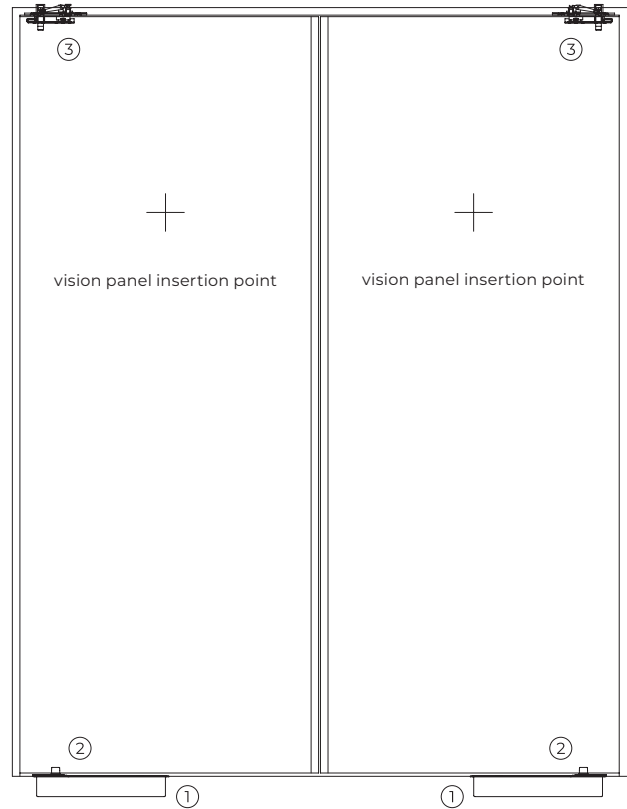
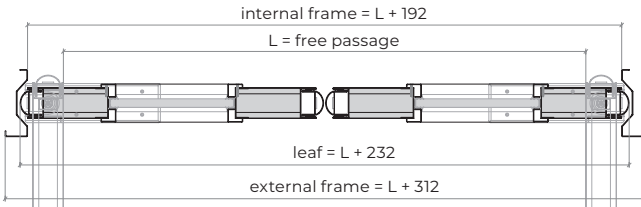
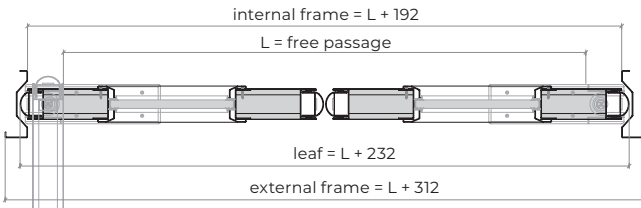
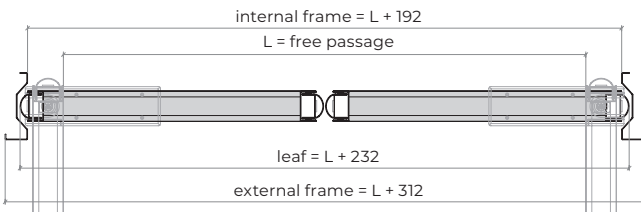
vertical view  
(without vision panel)



vertical view  
(circular vision panel)



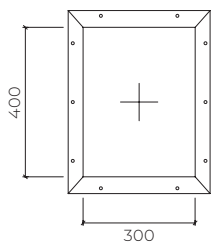
vertical view  
(rectangular vision panel)



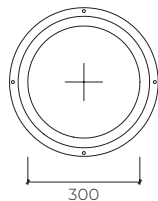
interior view

W2GL

## optionals



front view  
rectangular vision panel



front view  
circular vision panel

## accessories and hardware

| W1GL

| W1GL

### hydraulic spring

1 standard

spring floor

2 spring floor

### pivots

2 standard

lower pivot linked to the  
spring floor and embedded  
in the leaf

2 lower pivots linked to the  
spring floor and embedded in  
the leafs

3 standard

top pivot embedded in the  
leaf

2 top pivots embedded in the  
leafs

### others

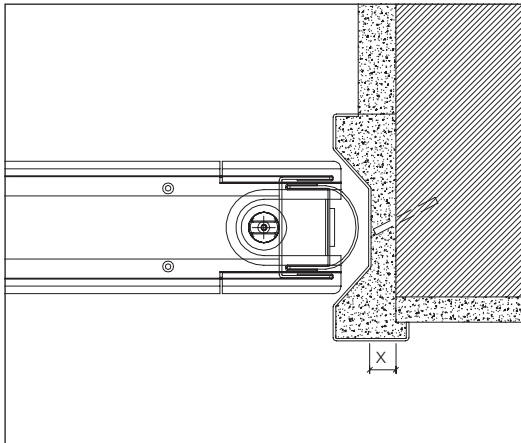
optional

rectangular vision panel, circular vision panel

**note:** standard version is supplied without any accessories, however, the door can be prepared to receive a lock of vertical dates (upper and lower), apparent or embedded.

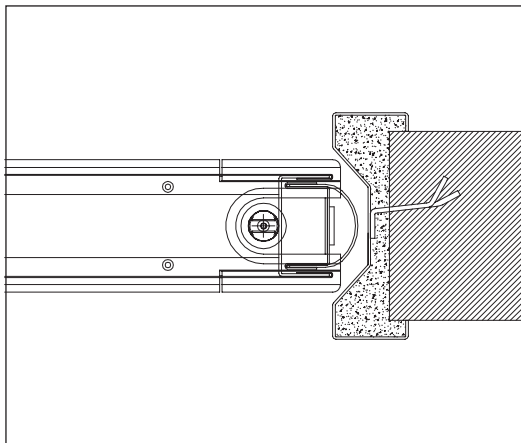
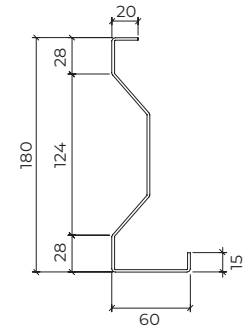


# details

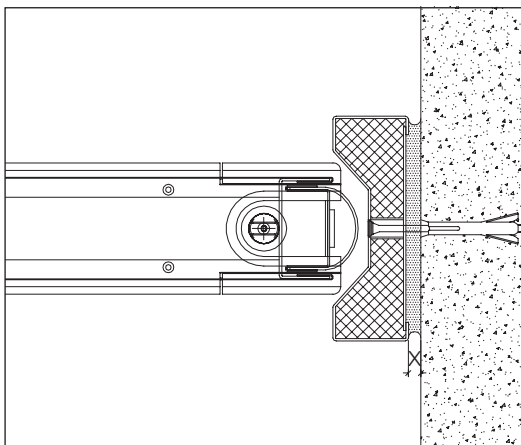
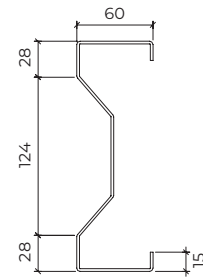


X > 20 mm (steel rod fixation)

standard frame | masonry wall mounting | steel rod fixation | plaster finish

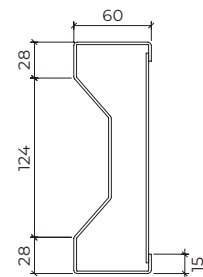


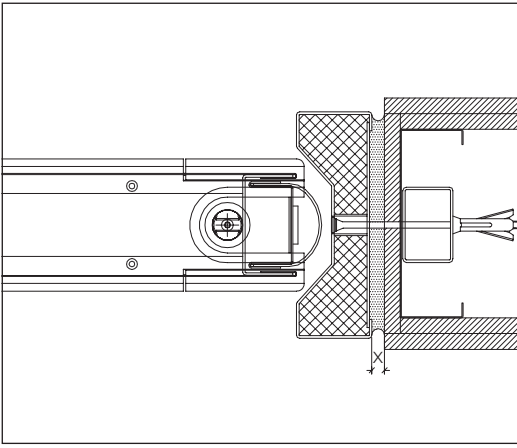
modified frame | concrete / masonry wall mounting | steel anchor sunk in mortar / concrete | (presupposes frame installation and subsequent wall finishing)



X ≥ 2 - 10 mm (metal plugs fixation)

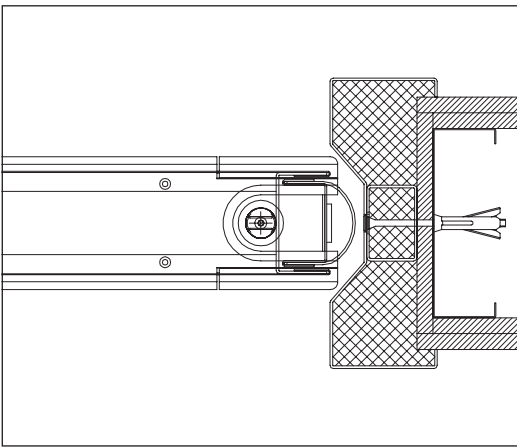
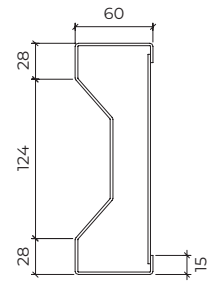
modified frame (closed) | concrete wall mounting | metal plugs fixation



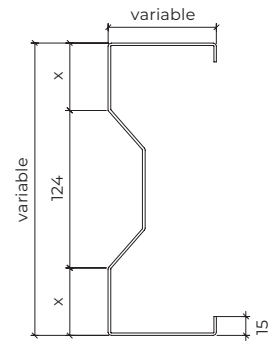


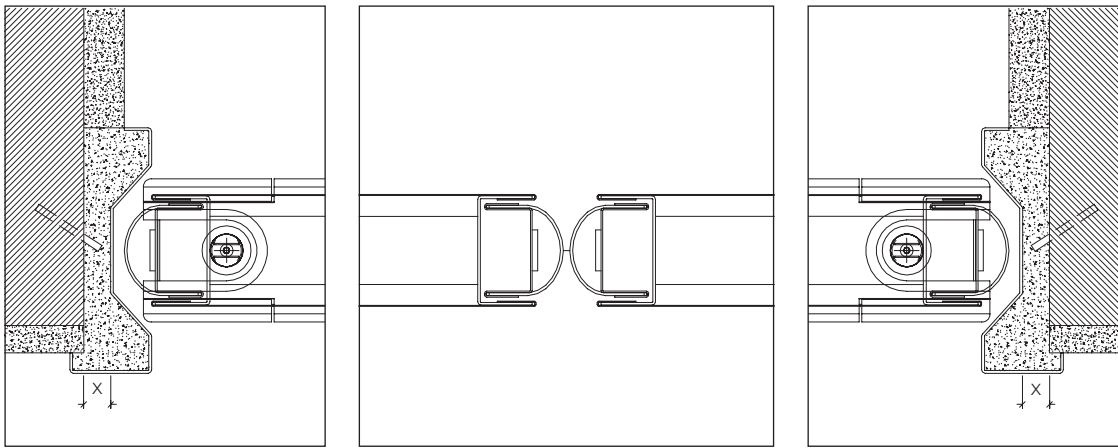
X ≥ 5 - 10 mm (metal plugs fixation)

modified frame (closed) | gypsum wall mounting | metal plugs fixation | (presupposes the fixation of the frame to a metal portico and subsequent wall mounting) Ad culabus sataber ununum octua



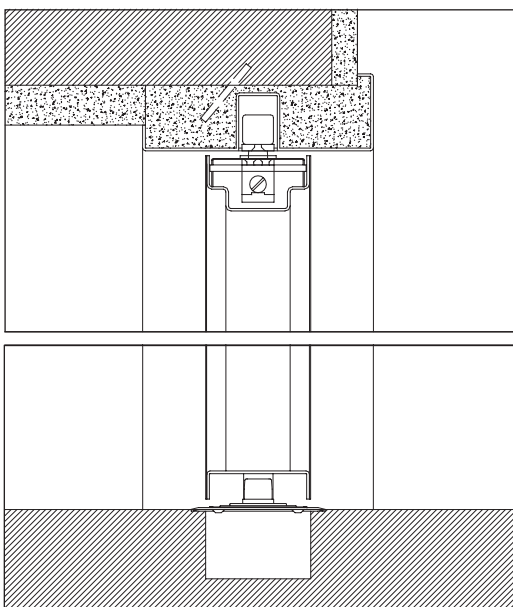
modified frame (variable dimation) | gypsum wall mounting | metal plugs fixation | (presupposes the fixation of the frame to a metal portico and subsequent wall mounting)



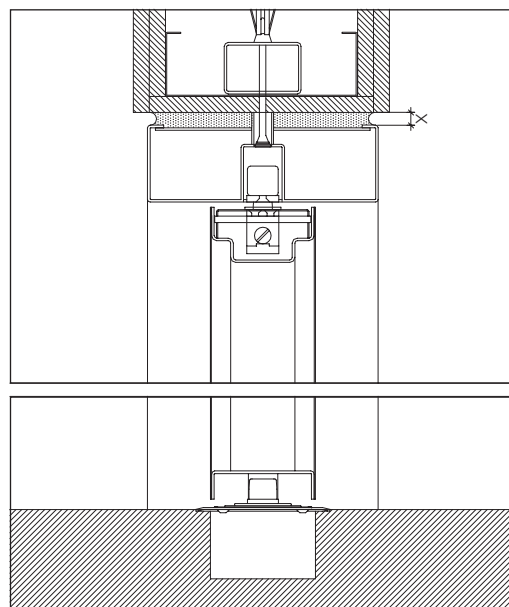


$X \geq 20$  mm (steel rod fixation)

standard frame | double leaf door | masonry wall mounting | steel rod fixation | plaster finish



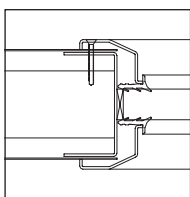
standard frame | masonry wall mounting | steel rod fixation | plaster finish | top and lower pivot and spring floor



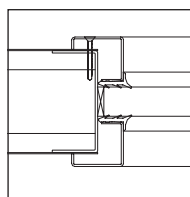
$X \geq 20$  mm (steel rod fixation)

modified frame (closed) | gypsum wall mounting | metal plugs fixation | top and lower pivot and spring floor | (presupposes the fixation of the frame to a metal portico and subsequent wall mounting)

## types of vision panels



circular vision panel



rectangular vision panel

GROUP COMPANY



---

**TRIA SA.**

Parque Ind. Manuel Lourenço Ferreira - Lt.43  
3450 - 232 Mortágua, Portugal  
//+351 231 927 480 //geral@tria.pt

**[www.tria.pt](http://www.tria.pt)**

VERS.10.22A