



TSN 3 & TSN 4

TSN SERIES | schröders system







MODELS

TSN 3
single hinged leaf

TSN 4
double hinged leaf



MODELS

TSN 3

TSN 4

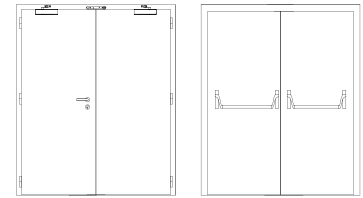
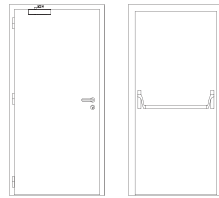
description

Hinged metal door with electro-zinc coated steel frame (1,5 mm thickness), cold-formed and construction by welding. An intumescent seal is embedded in the frame, which ensures the necessary tightness against flames and hot gases.

The leaf, with a door stop edge in all three sides of the frame, is made of two electro-zinc coated steel panels, ranging from 1 to 1,5 mm thick, and contains thermal insulating and acoustic materials according to Schröders constructive system.

The pivoting behavior of the door is ensured by two welded hinges of the system (per leaf), with a 16 mm diameter solid steel pin and movement on thrust ball bearings, allowing an opening up to 180°.

specification



model | typology

TSN 3 | single hinged leaf

TSN 4 | double hinged leaf

classification achieved when tested

FR integrity (EN 1634-1) ⁽¹⁾	E 60	E 60
FR integrity and insulation (EN 1634-1) ⁽¹⁾	EI ₂ 60	EI ₂ 60
radiation control (EN 1634-1) ⁽¹⁾	EW 60	EW 60
cold sealing (EN 1634-3)	Sa / S200	Sa/ S200
air permeability (EN 1026)	up to classe 4 (optional)	up to Classe 3 (Optional)
watertightness (EN 1027)	up to classe 8A (optional)	up to Classe 3A (Optional)
wind resistance (EN 12211)	up to classe C5 (optional)	up to Classe C4 (Optional)
acoustics (EN 20140-3)	up to 53 dB	up to 42 dB
burglar resistance (EN 1627)	up to RC4	up to RC4
pressure (EN 12211)	up to 5000 Pa	up to 3800 Pa

⁽¹⁾ classification according to standard EN 13501-2

dimensions (mm)

W x H (standard) ⁽²⁾	800 / 900 x 2000 / 2100	1400 / 1600 / 1800 x 2000 / 2100
W maximum	1602	3352
H maximum	3426	3426
external frame (standard)	L + 148 x H + 74	L + 148 x H + 74
other dimensions	upon request	upon request

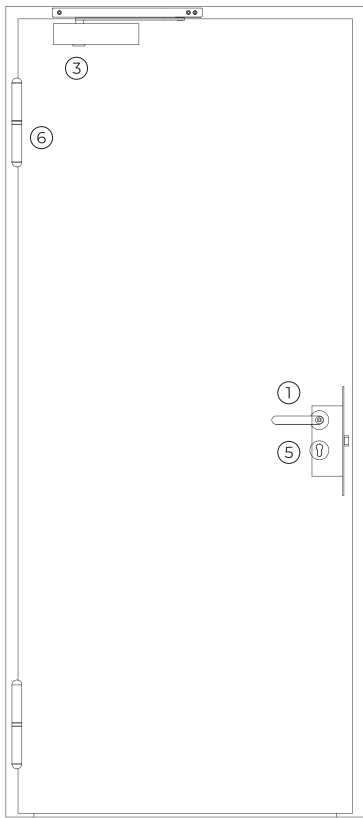
⁽²⁾ W x H = width x height = free passage

construction

leaf thickness (mm)	68	68
leaf weight (kg / m ²)	45	45
hinges (per leaf)	2	2
vision panel (mm)	Ø 350 / 450 x 450 / L ≤ 942 / H ≤ 2155 ⁽³⁾	Ø 350 / 450 x 450 / L ≤ 942 / H ≤ 2155 ⁽³⁾
finishing (standard)	electro-zinc coated steel for painting / lacquering in standard RAL color ⁽⁴⁾	electro-zinc coated steel for painting / lacquering in standard RAL color ⁽⁴⁾
finishing (optional)	stainless / wood veneer	stainless / wood veneer

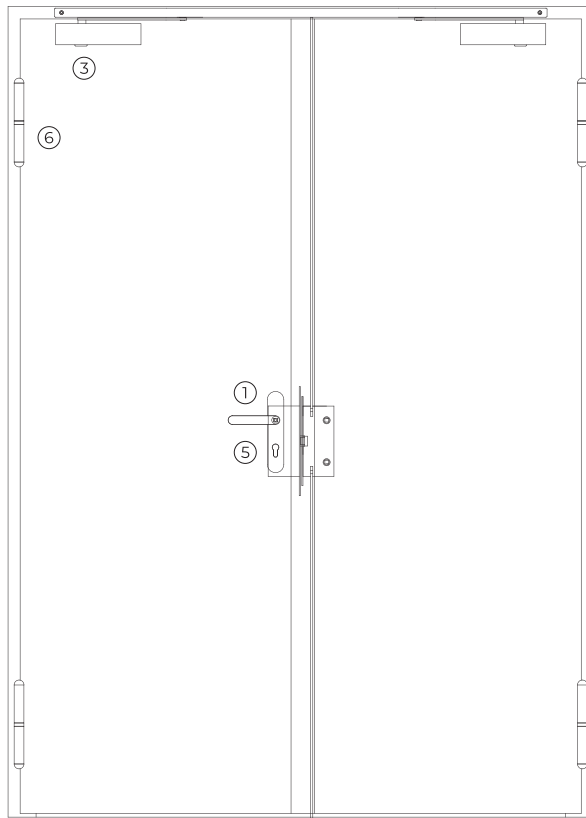
⁽³⁾ minimum border dimension= 130 mm / Central glazing bar (optional)

⁽⁴⁾ standard RAL colors= 7035, 7038, 9005 e 9010



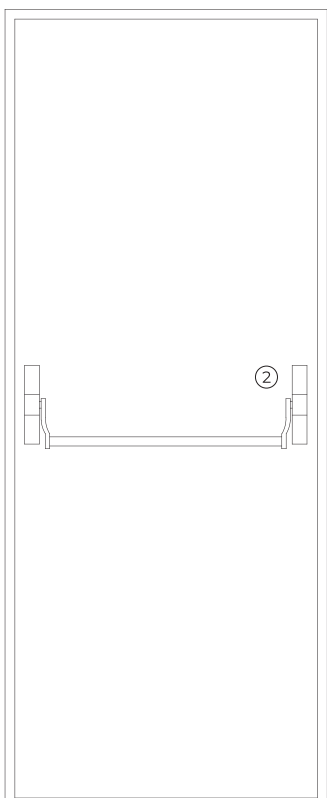
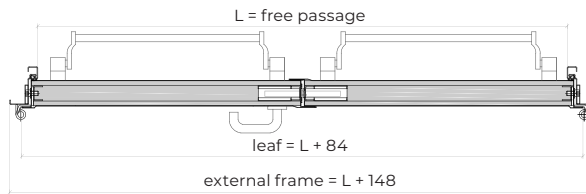
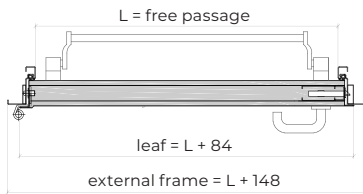
exterior view

TSN 3

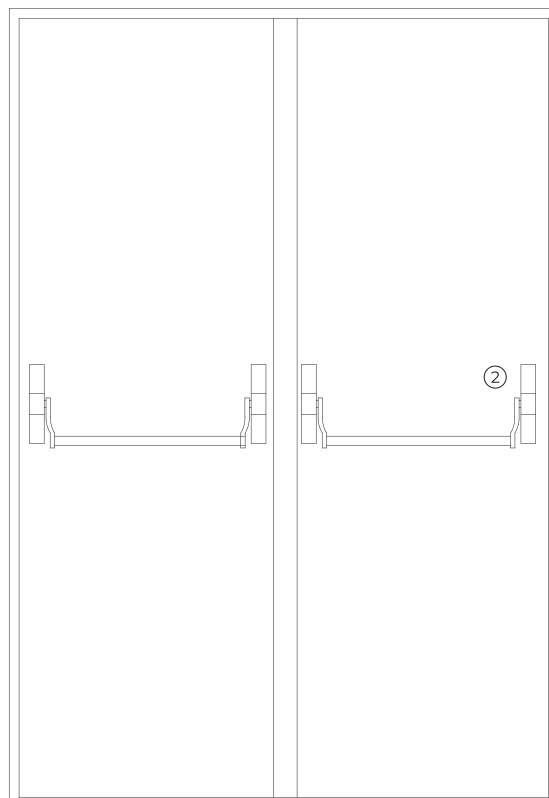


exterior view

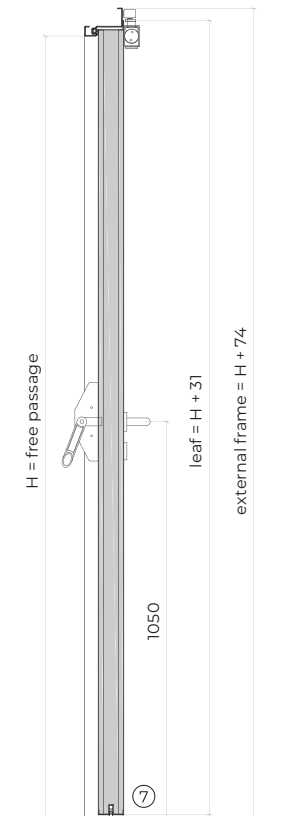
TSN 4



interior view

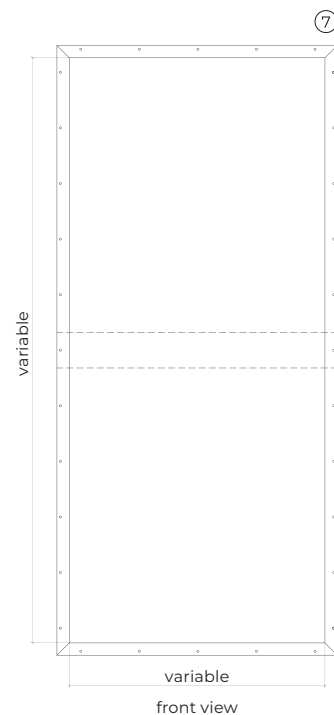
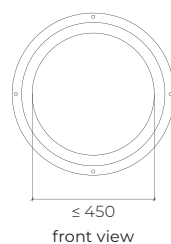
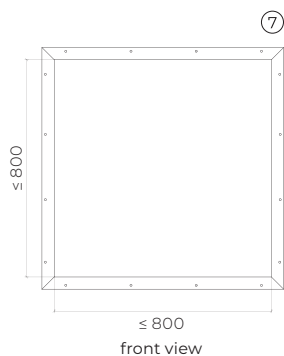


interior view



vertical section

optionals



accessories and hardware

TSN 3

TSN 4

handle / anti-panic bar ⁽⁵⁾

- | | | |
|---|----------|--|
| 1 | standard | anti-panic lever handle with drill finished in black (standard) or stainless steel. |
| 2 | standard | anti-panic bar with gear unit, tube, cover caps and arms finished in nylon black (standard) or stainless steel alternatively, the door may be equipped with a pair of handles. |

⁽⁵⁾ alternatively, the door may be equipped with a pair of handles.

hidraulic door closer ⁽⁶⁾

- | | | | |
|---|----------|--------------------------------------|-------------------------------------|
| 3 | standard | door closer with an articulated arm. | door closers with articulated arms. |
| | optional | door closer with sliding rail. | door closer with sliding rail. |

⁽⁶⁾ with electromagnetic hold-open (optional).

lock / counter lock

- | | | | |
|---|----------|---------------------------------------|--|
| 4 | standard | anti-panic lock with 1 locking point. | anti-panic lock with 1 locking point + counter lock. |
|---|----------|---------------------------------------|--|

cylinder

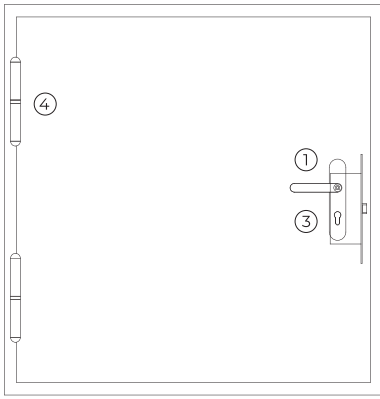
- | | | |
|---|----------|----------------------------------|
| 5 | standard | 1/2 cylinder (european profile). |
|---|----------|----------------------------------|

hinges

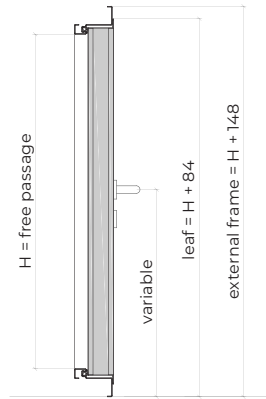
- | | | | |
|---|----------|------------------------------------|------------------------------------|
| 6 | standard | 2 exclusive hinges of this series. | 2 exclusive hinges of this series. |
|---|----------|------------------------------------|------------------------------------|

others

- | | | | |
|---|----------|-----------------------------|-----------------------------|
| 7 | optional | automatic seal (VAS). | automatic seal (VAS). |
| | optional | optical door viewer (180°). | optical door viewer (180°). |
| | optional | acoustic kit. | acoustic kit. |

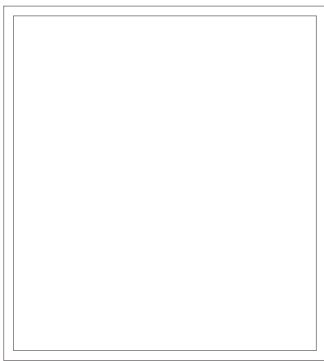
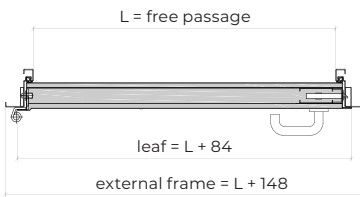


exterior view



vertical section

TRAPDOOR MODULE



interior view

accessories and hardware

handle / anti-panic bar ⁽⁷⁾

1 standard

anti-panic lever handle with drill finished in black (standard) or stainless steel.

⁽⁷⁾ alternatively, the door may be equipped with a pair of handles.

lock / counter lock

2 standard

anti-panic lock with 1 locking point

cylinder

3 standard

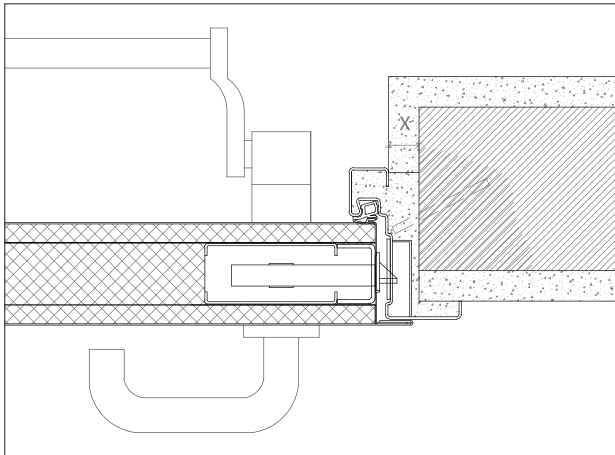
1/2 cylinder (european profile)

hinges

4 standard

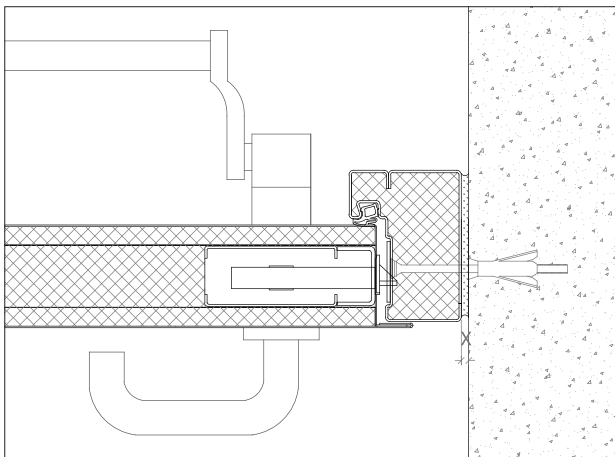
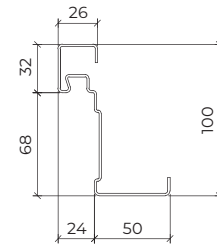
2 exclusive hinges of this series

details



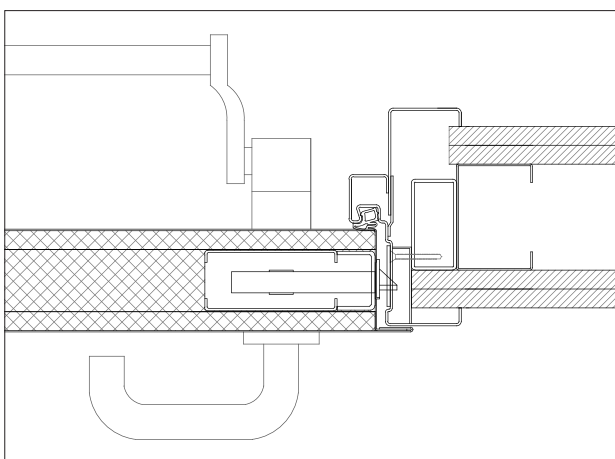
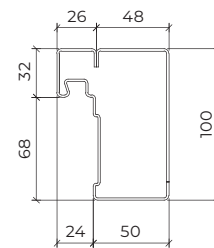
x > 20 mm (steel rod fixation)

F1 frame – standard frame | masonry wall mounting | steel rod fixation | plaster finish.



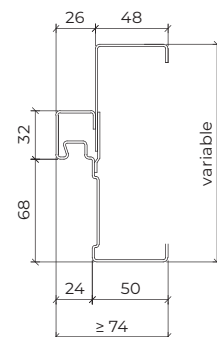
X ≥ 5-10 mm (for fixing with metal wall plugs according to wall type)

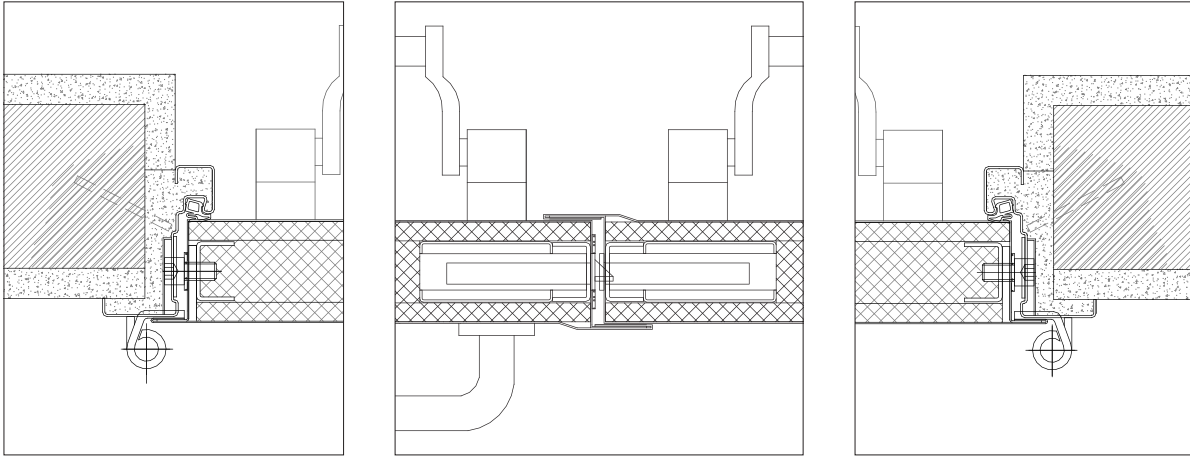
F2 frame – Closed frame | concrete wall mounting | metal wall plugs fixation.



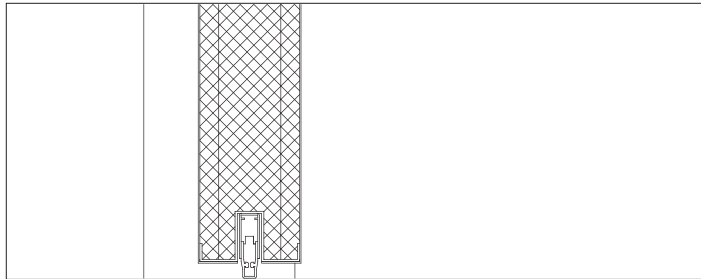
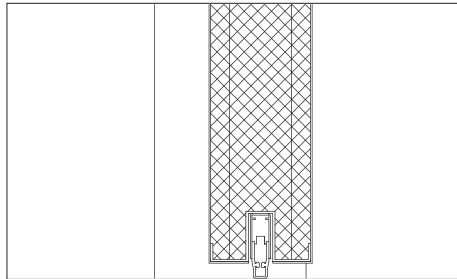
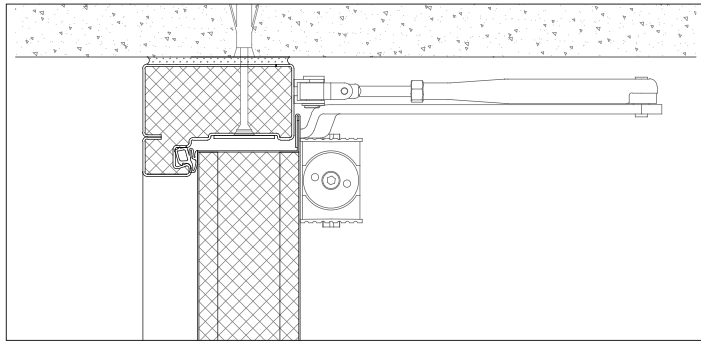
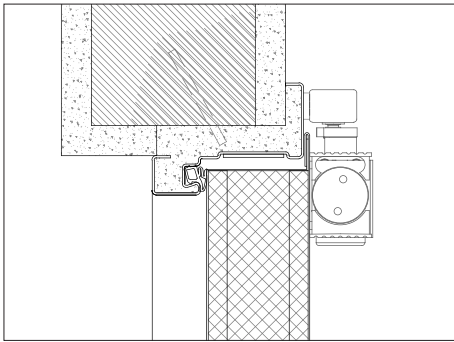
Note: there are certain elements – namely intumescent and acoustic seals and / or leaf and frame fillings – shown in details, that can be suppressed depending on the technical requirements of the door.

F3 frame – frame + counter-frame | gypsum wall mounting | metal portico fixation.





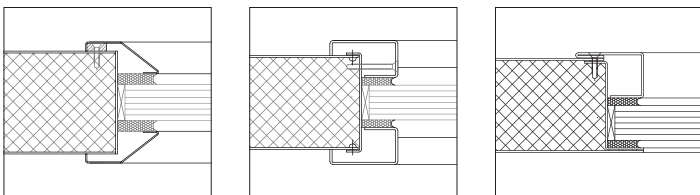
F1 frame – standard frame | masonry wall mounting | steel rod fixation | plaster finish



F1 frame – standard frame | masonry wall mounting | steel rod fixation | plaster finish | door closer with sliding rail

F1 frame – standard frame | masonry wall mounting | steel rod fixation | plaster finish | door closer with sliding rail

types of vision panels



differences between models

MODEL SINGLE HINGED

RW (C;Ctr) = 43 - 45 dB*

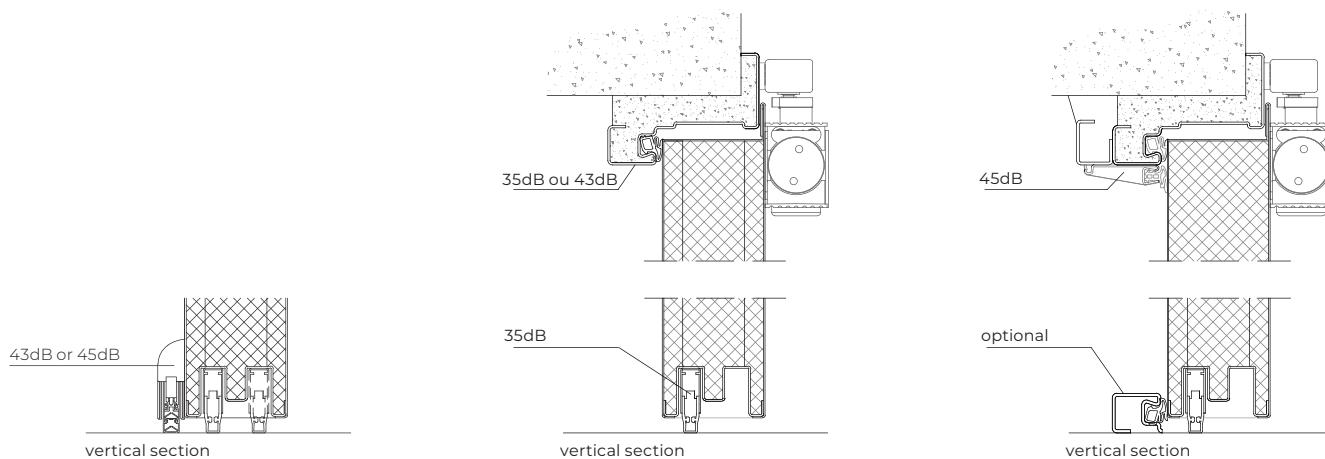
Silicone gasket on the three inner sides of the frame "GZN-S"
 Additional silicone gasket, mounted on the outer face of the frame "SD-1"
 2 automatic seals "Planet"

RW (C;Ctr) = 41 - 43 dB*

Silicone gasket on the three inner sides of the frame "GZN-S"
 2 automatic seals "Planet"

RW (C;Ctr) = 34 - 35 dB*

Silicone gasket on the three inner sides of the frame "GZN-S"
 1 automatic seals "Planet"



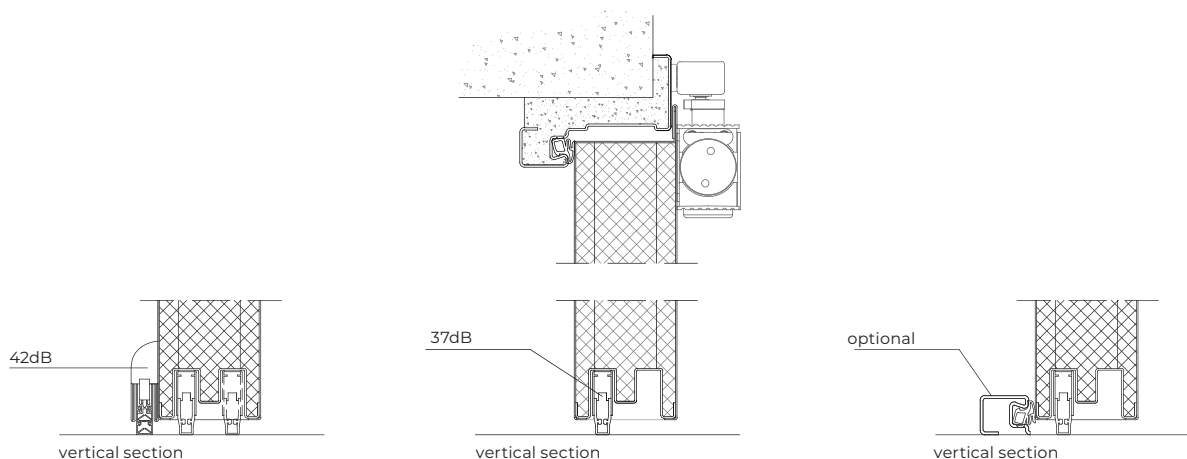
MODEL DOUBLE HINGED

RW (C;Ctr) = 40 up to 42 dB*

Silicone gasket on the three inner sides of the frame "GZN-S"
 2 automatic seals "Planet"

RW (C;Ctr) = 35 up to 37 dB*

Silicone gasket on the three inner sides of the frame "GZN-S"
 1 automatic seals "Planet"



GROUP COMPANY



TRIA SA.

Parque Ind. Manuel Lourenço Ferreira - Lt.43
3450 - 232 Mortágua, Portugal
//+351 231 927 480 //geral@tria.pt

www.tria.pt

VERS.10.22A