



SW1A.45 & SW2A.45

SW SERIES





MODELS

SW1A.45
double action single leaf

SW2A.45
double action double leaf



MODELS

SW1A.45

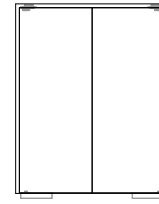
SW2A.45

description

Double acting wooden door with frame made of solid wood. It contains intumescent seals that ensure the necessary tightness against flames and hot gases. The leaf is made of a solid wood edge and contains thermal insulating materials according to the TRIA constructive system.

In leaf's top is incorporated a pivot (per leaf) that ensures a balanced rotation. The hydraulic door closer embedded in the pavement works as a lower pivot, allowing the double action movement (swinging) and stopping in the middle point, when the door is closed.

specification



model | typology

SW1A.45
| double action single leaf

SW2A.45
| double action double leaf

fire resistance classification

FR integrity (EN 1634-1)

both faces

both faces

E45

E45

FR integrity and isolation (EN 1634-1)

El₂ 45

El₂ 45

classification according to standard EN 13501-2

dimensions (mm)

W x H (standard) ⁽¹⁾	800 / 900 x 2000 / 2100	1400 / 1600 / 1800 x 2000 / 2100
W maximum ⁽²⁾	1106 (El ₂ 45) / 1214 (El ₂ 30)	1800 (El ₂ 45) / 2128 (El ₂ 30)
H maximum ⁽²⁾	2586 (El ₂ 45) / 2817 (El ₂ 30)	2250 (El ₂ 45) / 2620 (El ₂ 30)
maximum area m ²	2.80 (El ₂ 45) / 2.68 (El ₂ 30)	4.05 (El ₂ 45) / 5.22 (El ₂ 30)
external frame (standard)	W + 175 x H + 40	W + 268 x H + 40
other dimensions	upon request	upon request

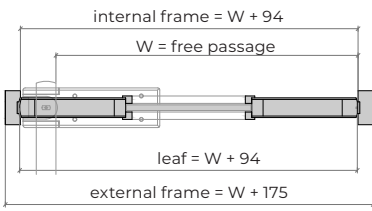
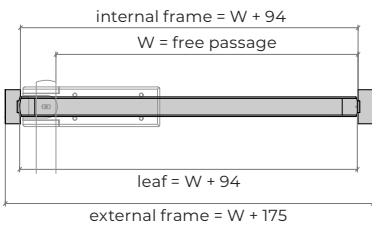
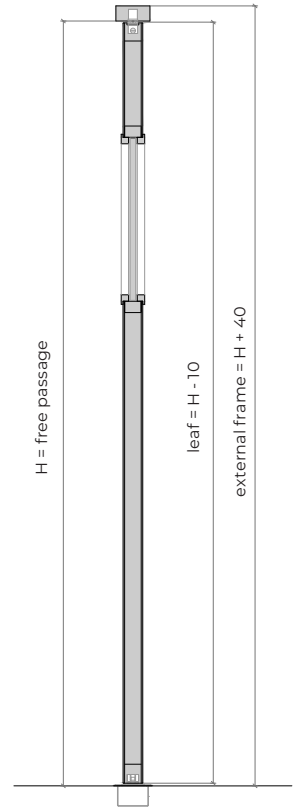
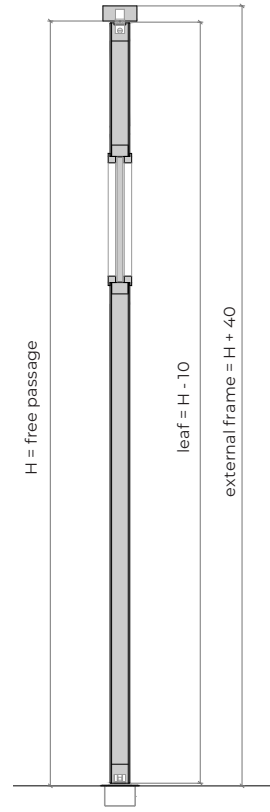
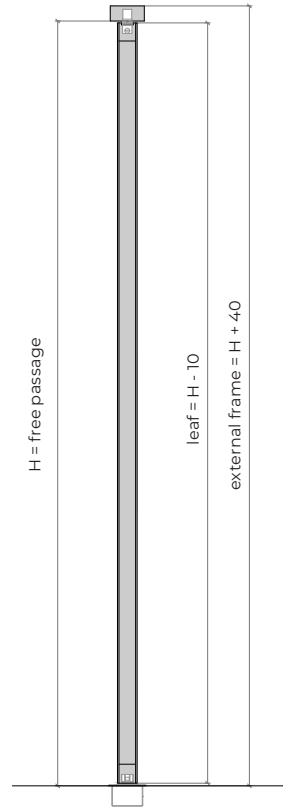
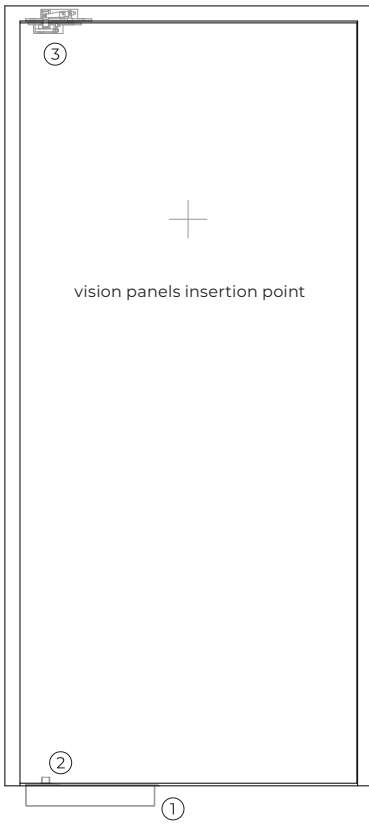
⁽¹⁾ W x H = width X height = free passage

⁽²⁾ width and height should be considered in conjunction with the indicated maximum area

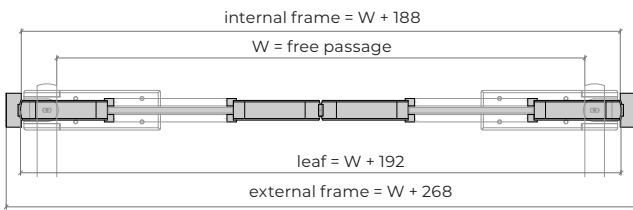
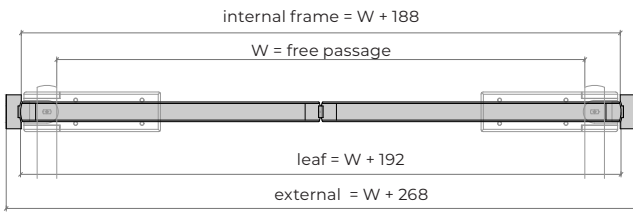
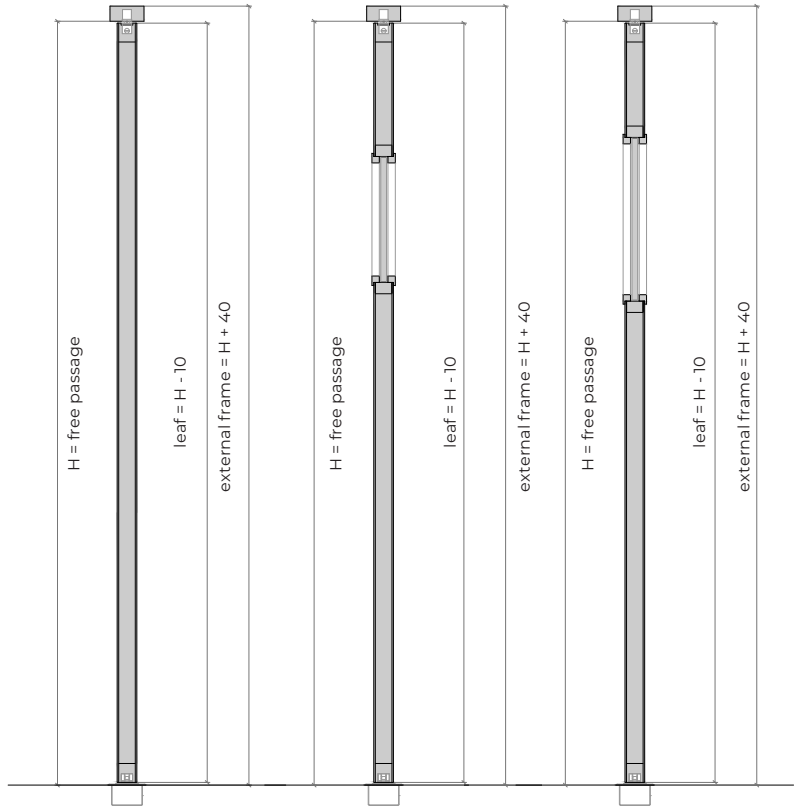
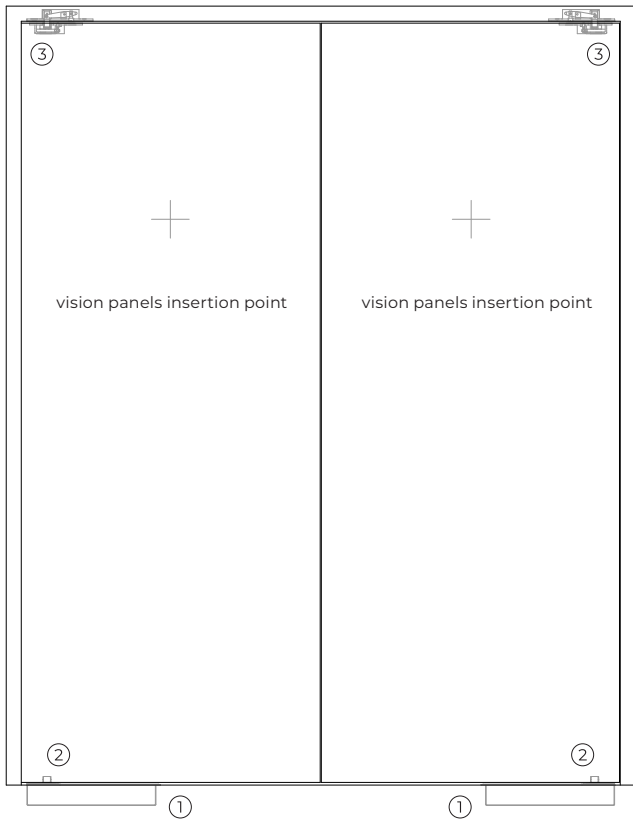
construction

leaf thickness (mm)	52	52
leaf weight (kg/m ²)	35	35
pivot (per leaf)	1	1
standard vision panel (mm)	Ø 300 / 300 x 400	Ø 300 / 300 x 400
finishing (standard)	mdf to paint in standard RAL color ⁽³⁾	mdf to paint in standard RAL color ⁽³⁾
finishing (optional)	timber up to 3 mm and laminates up to 2 mm	timber up to 3 mm and laminates up to 2 mm
frame (optional)	timber with density equal or higher than 520 kg/m ³	timber with density equal or higher than 520 kg/m ³
protective metal plate	metal plate up to maximum of 2 mm	metal plate up to maximum of 2 mm

⁽³⁾ standard RAL colors = 7035, 7038, 9005 e 9010

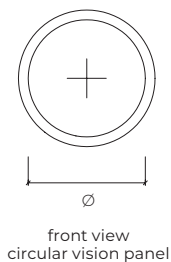
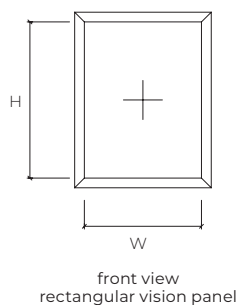


SW1A.45



SW2A.45

optionals

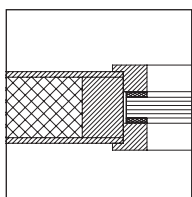


Vision Panel Dimension (mm)

W x H (standard)	300 x 400
W maximum	330 (EI ₂ 45) 379 (EI ₂ 30)
H maximum	430 (EI ₂ 30) / 494 (EI ₂ 30)

Ø (standard)	300
Ø maximum	330 (EI ₂ 45) / 379 (EI ₂ 30)

vision panel



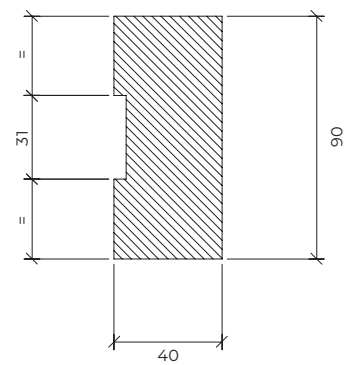
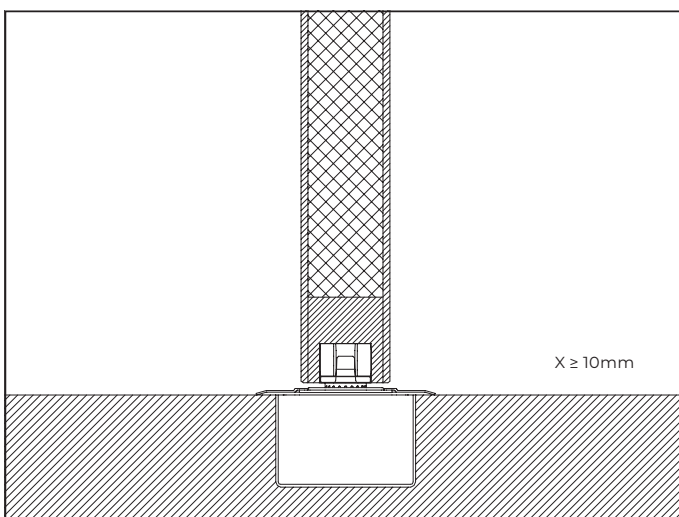
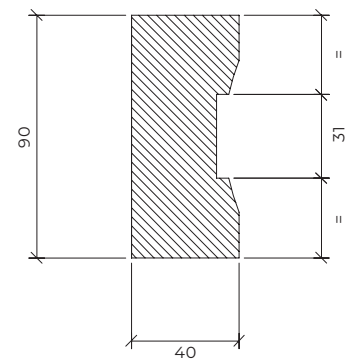
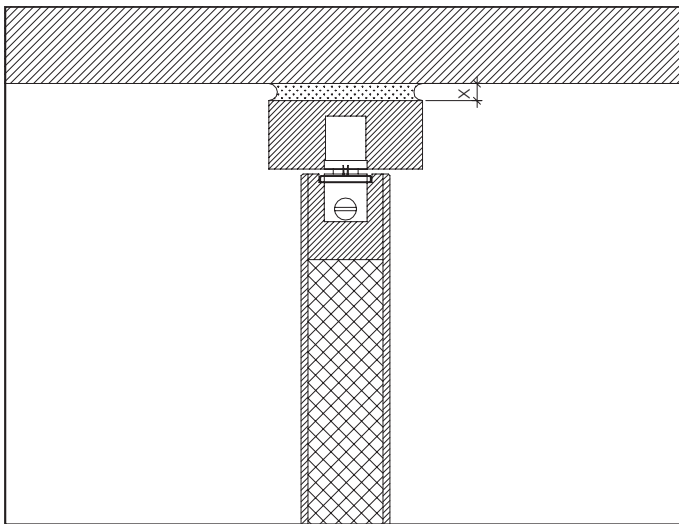
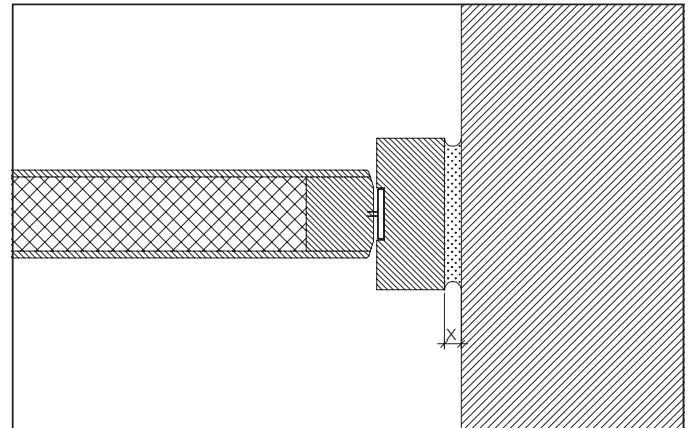
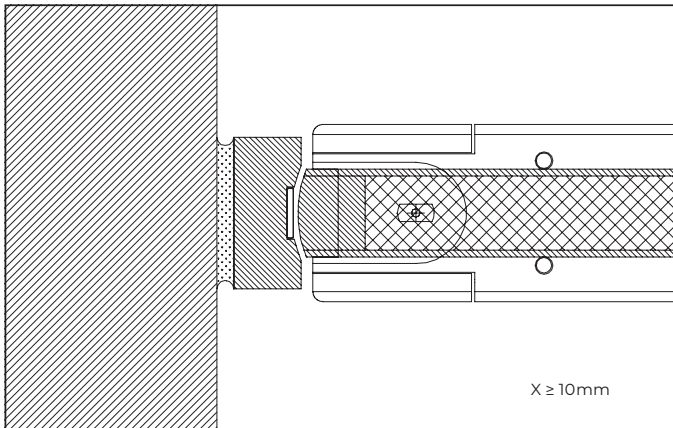
accessories and hardware

SW1A.45

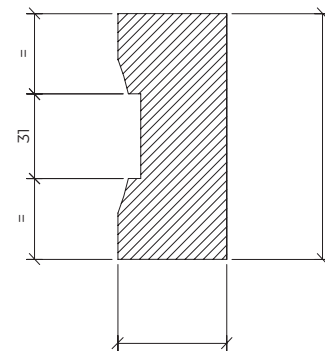
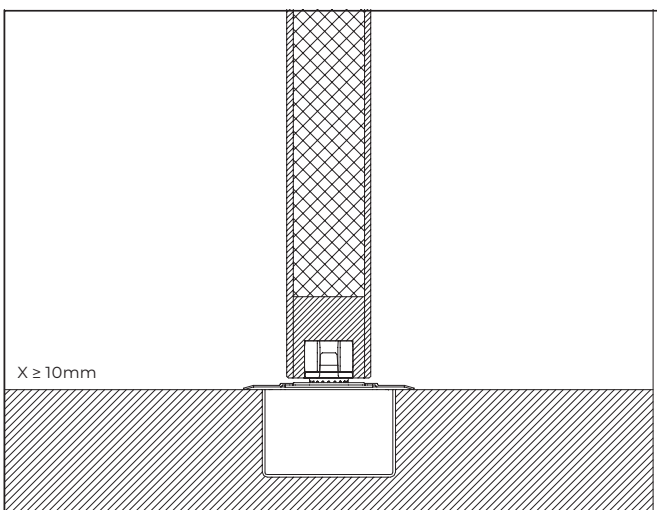
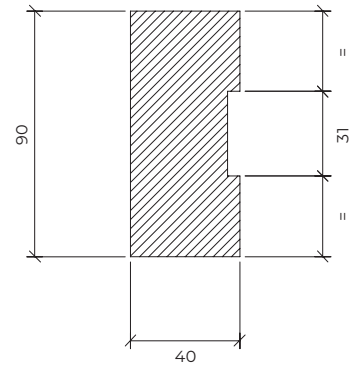
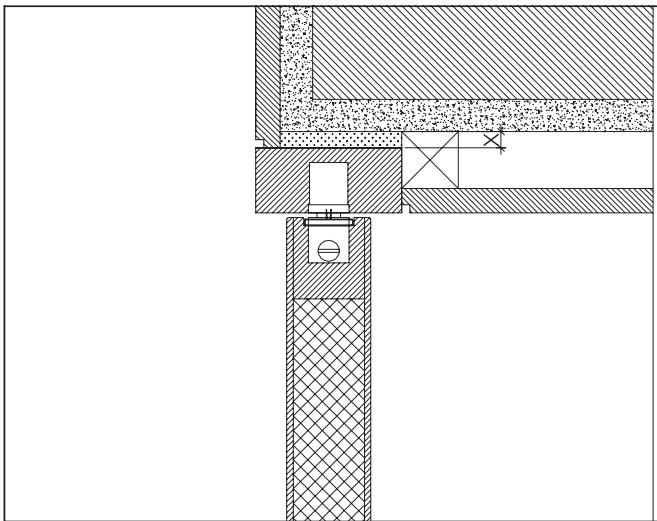
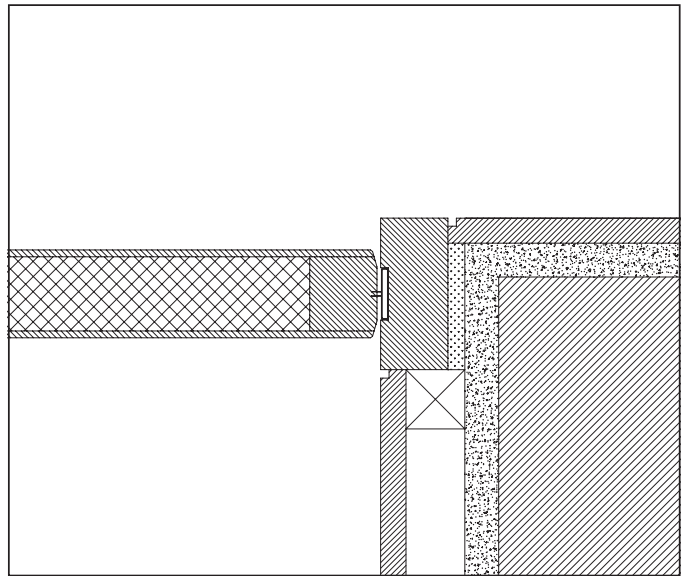
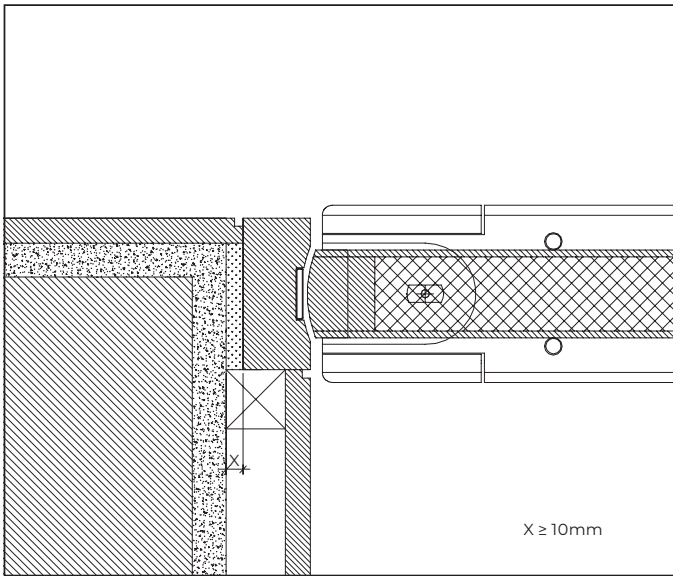
SW2A.45

hydraulic spring	1 standard	spring floor	2 spring floor
pivots	2 standard	lower pivot linked to the spring floor and embedded in the leaf	2 lower pivots linked to the spring floor and embedded in the leafs
	3 standard	top pivot embedded in the leaf	2 top pivots embedded in the leafs
others	optional	rectangular vision panel, circular vision panel	rectangular vision panel, circular vision panel

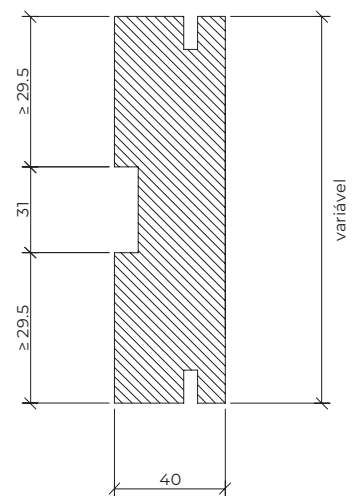
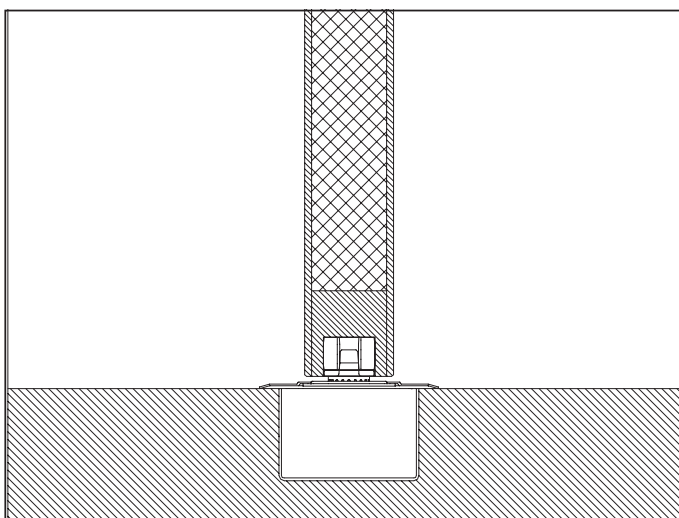
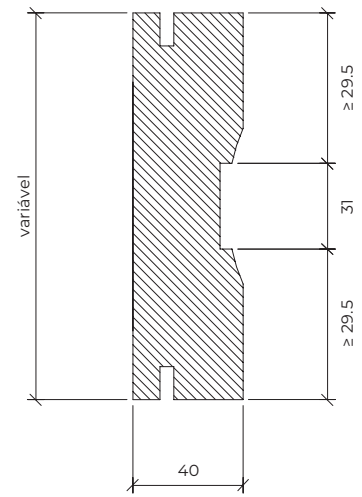
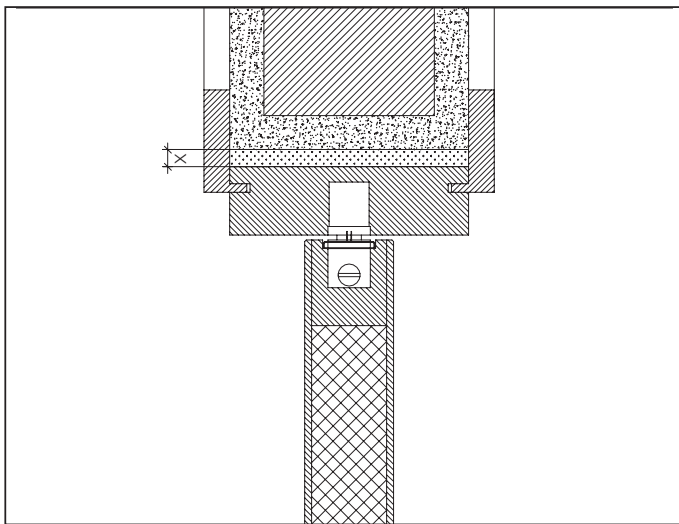
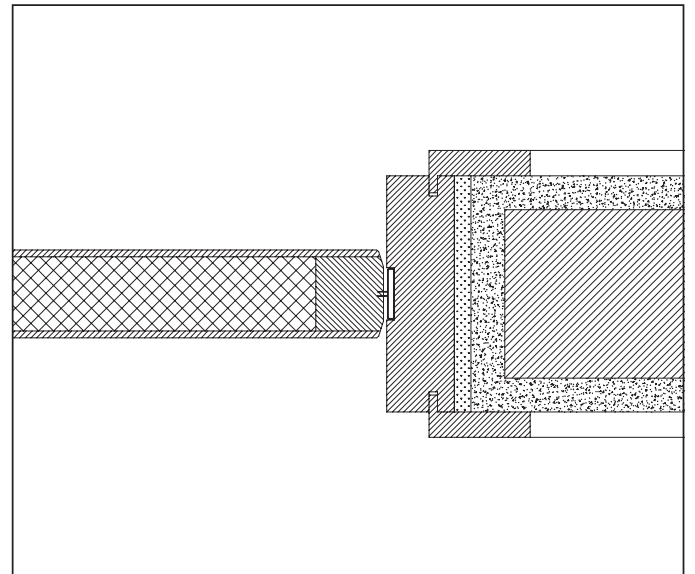
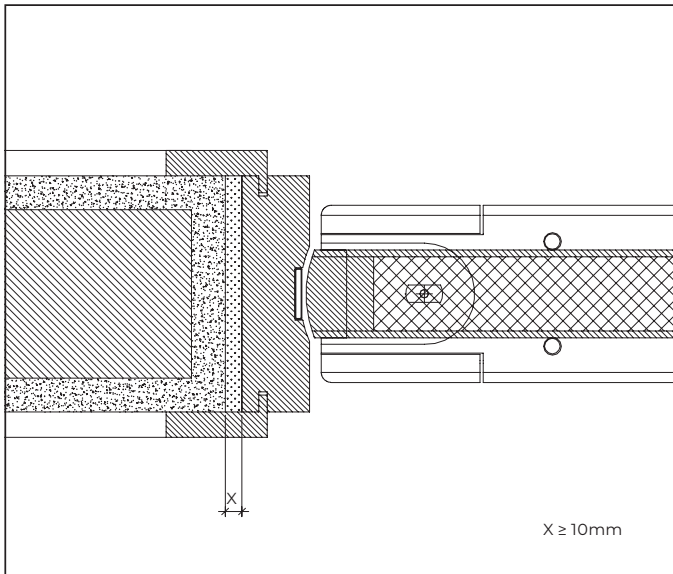
details



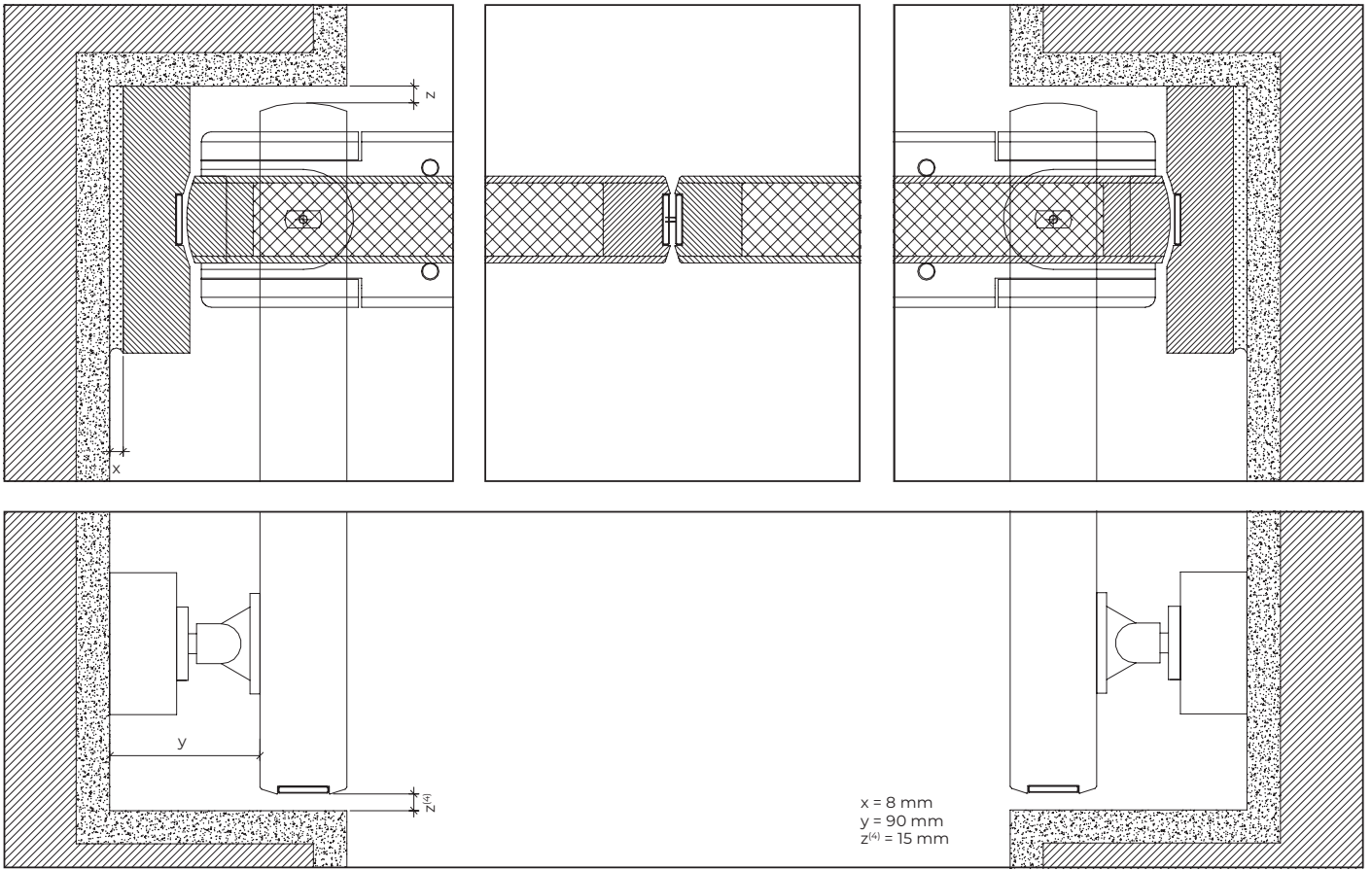
standard frame | masonry wall mounting | fixation with expandable foam | plaster and wood finishes



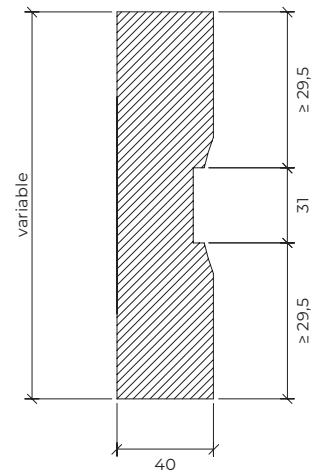
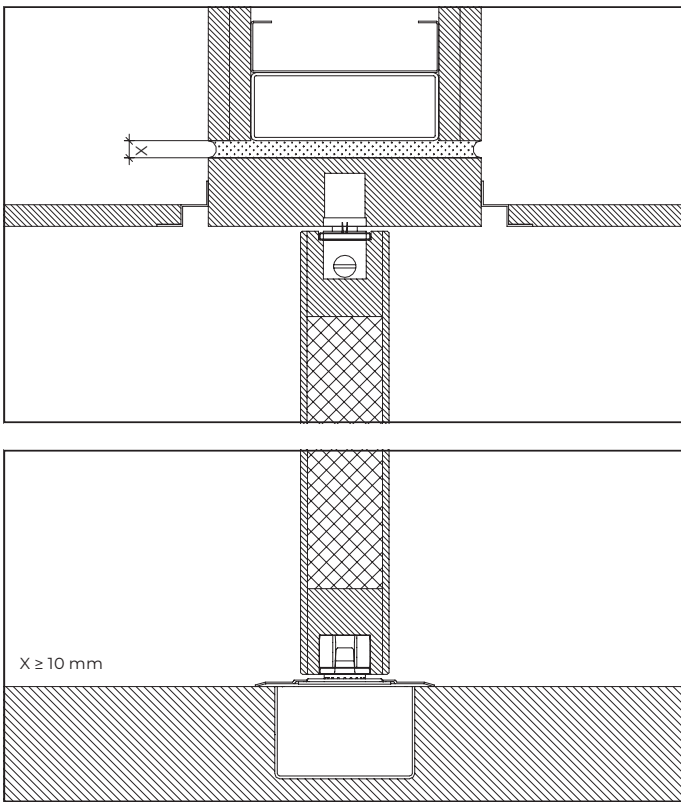
standard frame | masonry wall mounting | fixation with expandable foam | wood finishes



modified frame | concrete wall mounting | fixation with expandable foam | plaster and wood finishes



⁽⁴⁾ Check technical and/or legal requirements for accessibility to the electromagnetic door holders switch.



modified frame | masonry wall mounting | fixation with expandable foam | applications in corridors or where doors are normally held open by magnetic holders | frame aligned with the ceiling

GROUP COMPANY



TRIA SA.

Parque Ind. Manuel Lourenço Ferreira - Lt.43
3450 - 232 Mortágua, Portugal
//+351 231 927 480 //geral@tria.pt

www.tria.pt

VERS.10.22A