



# SH

## SH SERIES





## MODELS

**SH1 A.60**  
single hinged leaf

**SH2 A.60**  
double hinged leaf



MODELS

# **SH1 A.60**

# **SH2 A.60**

## description

Telescopic steel frame and wooden leaf door. The frame is made of bended electro-zinc coated steel profiles (1.5 mm thickness) and adjustable counter frame to the wall thickness. A perimeter rubber seal ensure the necessary tightness against cold smoke, as well as a high acoustic attenuation.

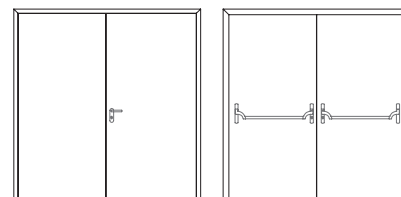
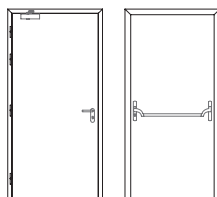
The leaf is made of a solid wood edge and contains acoustic and thermal insulating materials according to TRIA's construction system.

The use of intumescent seals ensures the necessary tightness against flames and hot gases. An automatic drop seal can be incorporated into the leaf.

The pivoting behavior of the door is ensured by hidden or visible hinges.

The automatic closing of the leaves is ensured by a hidden or visible door closer.

## specification



model | typology

**SH1 A.60** | single hinged leaf  
steel frame wooden leaf door

**SH2 A.60** | double hinged leaf  
steel frame wooden leaf door

## classification achieved when tested

FR integrity (EN 1634-1) <sup>(1)</sup>

E60

E60

FR integrity and insulation (EN 1634-1) <sup>(1)</sup>

EI<sub>1</sub> 45 / EI<sub>2</sub> 60

EI<sub>1</sub> 45 / EI<sub>2</sub> 60

<sup>(1)</sup> classification according to standard EN 13501-2

## dimensions (mm)

W x H (standard) <sup>(2)</sup>

800 / 900 x 2000 / 2100

1400 / 1600 / 1800 x 2000 / 2100

L maximum

1150

2415

H maximum

2530

2530

external frame (standard)

W + 136 x H + 68

W + 136 x H + 68

other dimensions

upon request

upon request

<sup>(2)</sup> W x H = width x height = free passage

## construction

leaf thickness (mm)

62

62

leaf weight (kg/m<sup>2</sup>)

45

45

hinges

hidden / visible

hidden / visible

finishing (standard)

mdf to paint

mdf to paint

finishing (optional)

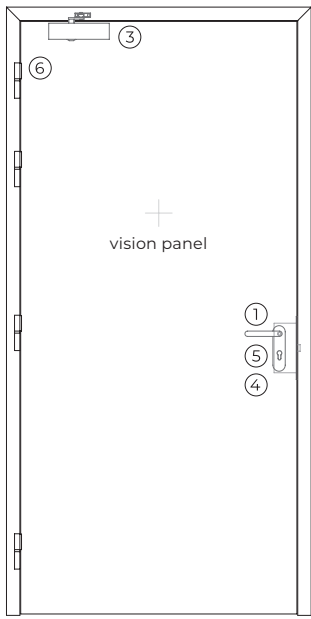
veneering in various woods /  
materials / lacquering

veneering in various woods /  
materials / lacquering

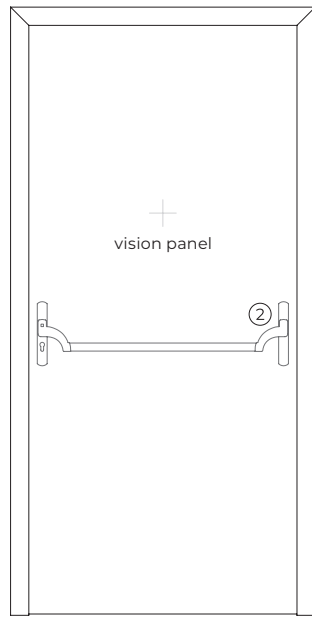
vision panel (optional)

500mm x 800mm / Ø300mm

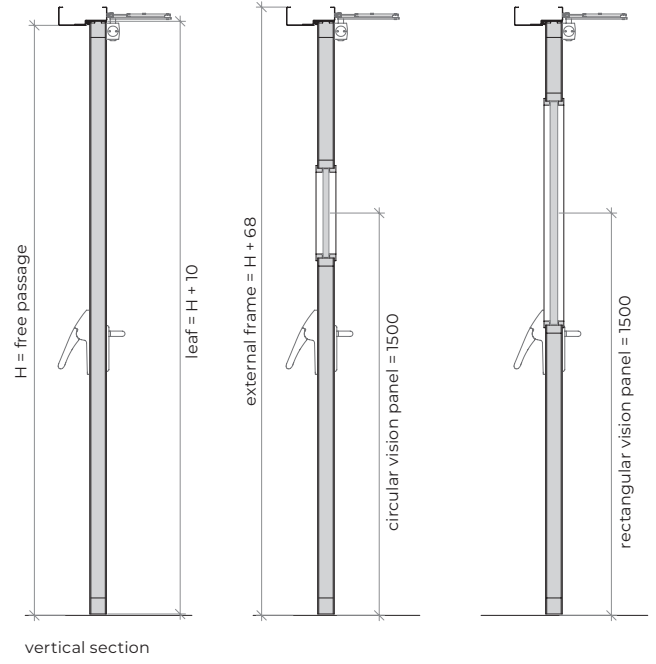
500mm x 800mm / Ø300mm



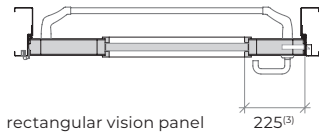
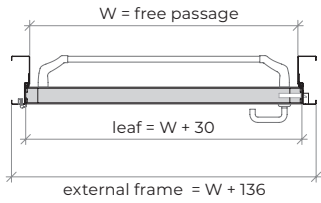
external view



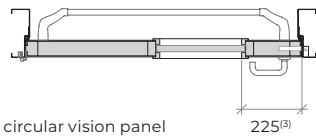
interior view



vertical section

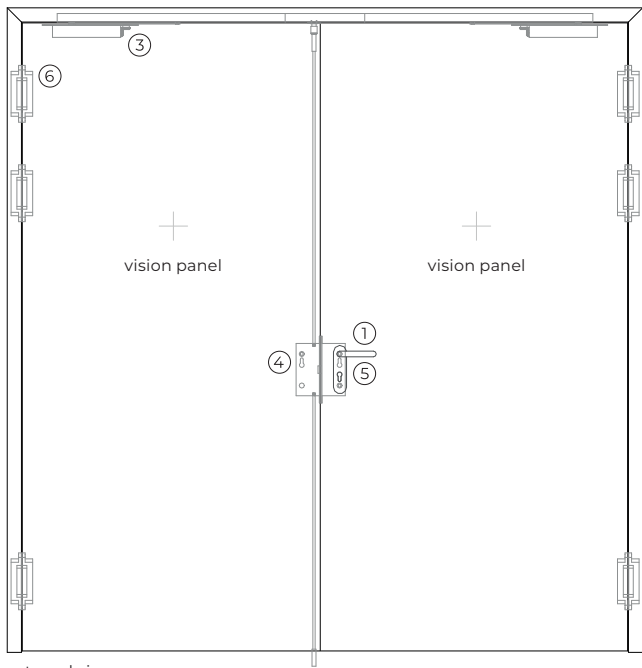


rectangular vision panel

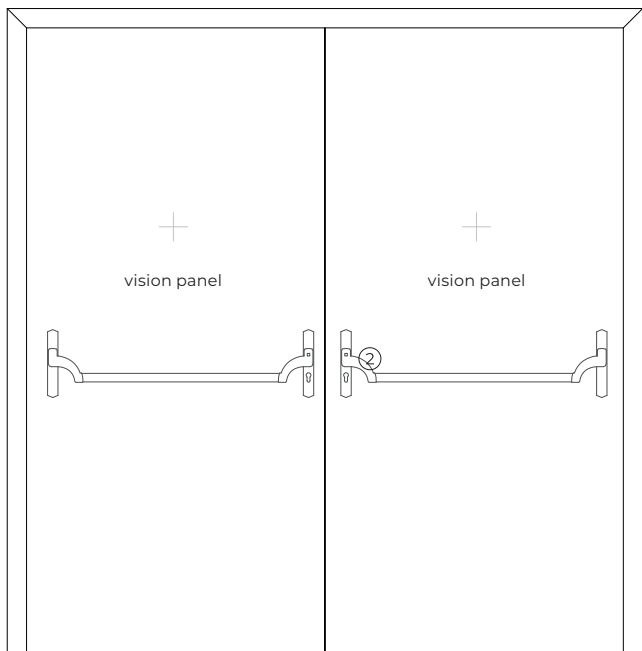
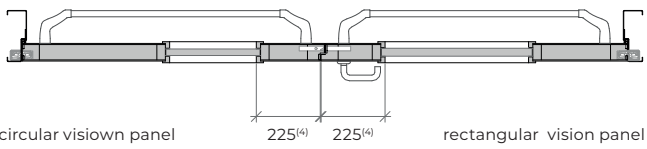
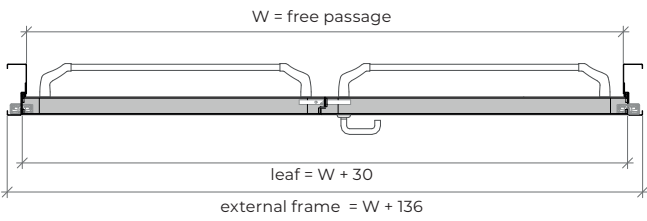


circular vision panel

<sup>(3)</sup> minimum distance between the leaf edge

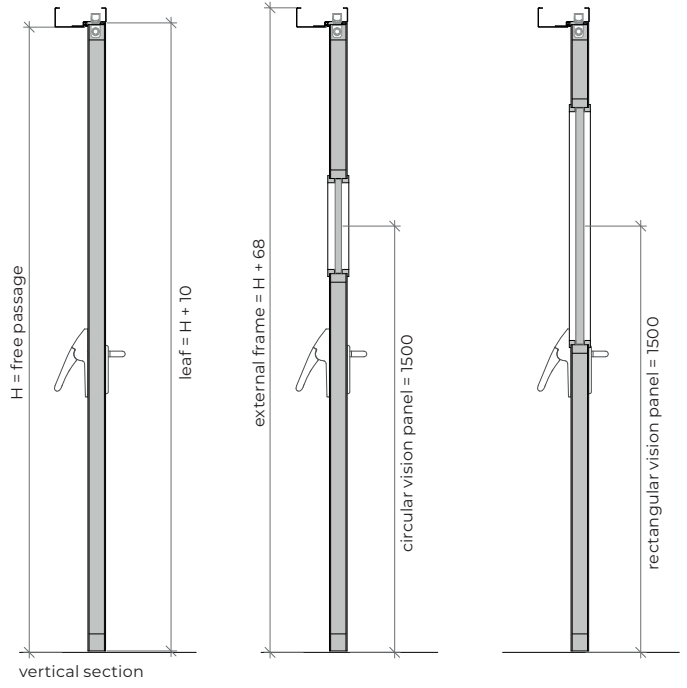


external view



interior view

<sup>(4)</sup> minimum distance between the leaf edge



# accessories and hardware

## SH1 A.60

single hinged leaf

## SH2 A.60

double hinged leaf

### handle / anti-panic bar <sup>(4)</sup>

1	standard	anti-panic lever handle finished in black (standard) or stainless steel	
2	standard	anti-panic bar with gear unit, tube, cover caps and arms finished in nylon black (standard) or stainless steel	

<sup>(4)</sup> alternatively, the door may be equipped with a pair of handles

### hidraulic door closer <sup>(5)</sup>

3	standard	door closer with an articulated arm	door closer with an articulated arm + closing sequence selector
	optional	door closer with sliding rail	door closer with sliding rail + closing sequence selector
	optional	hidden door closer	hidden door closer + closing sequence selector

<sup>(5)</sup> with electromagnetic hold-open (optional)

### lock / counter lock

4	standard	anti-panic lock with 1 locking point	anti-panic lock with 1 locking point + counter lock
---	----------	--------------------------------------	---

### cylinder

5	standard	1/2 cylinder (european profile)	
---	----------	---------------------------------	--

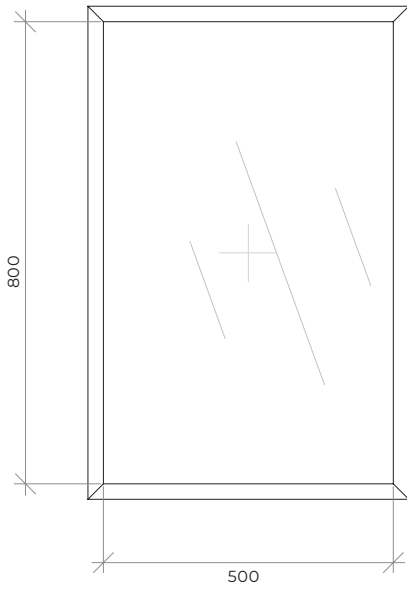
### hinges

6	standard	visible hinges	
	optional	hidden hinges	

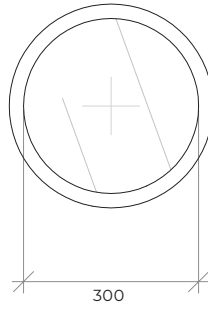
### others

7	optional	automatic drop seal	
---	----------	---------------------	--

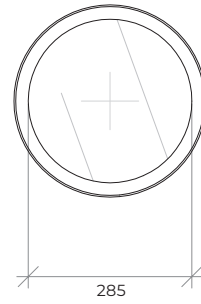
# optionals



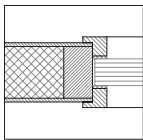
rectangular vision panel



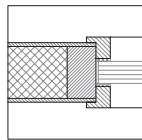
circular vision panel



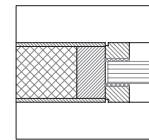
285



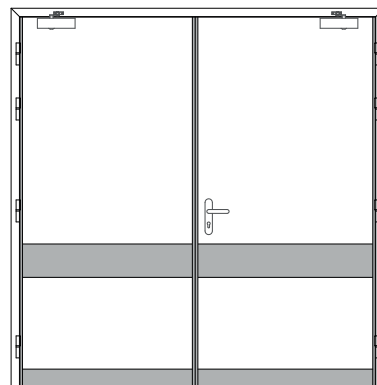
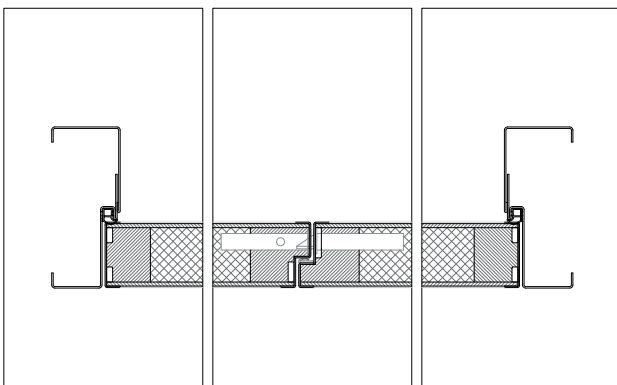
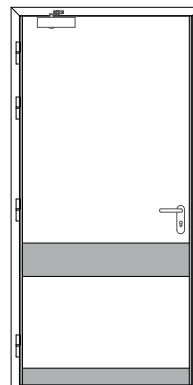
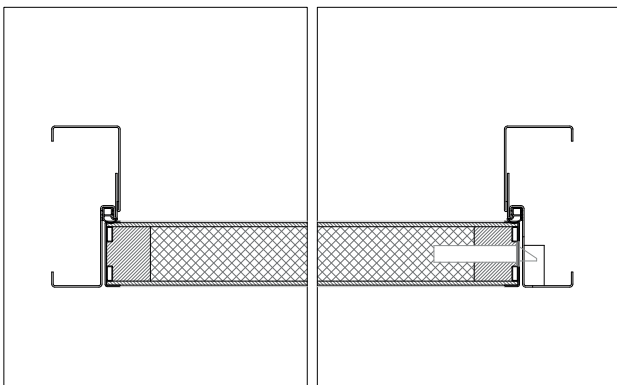
overlap glazing bead



overlap glazing bead



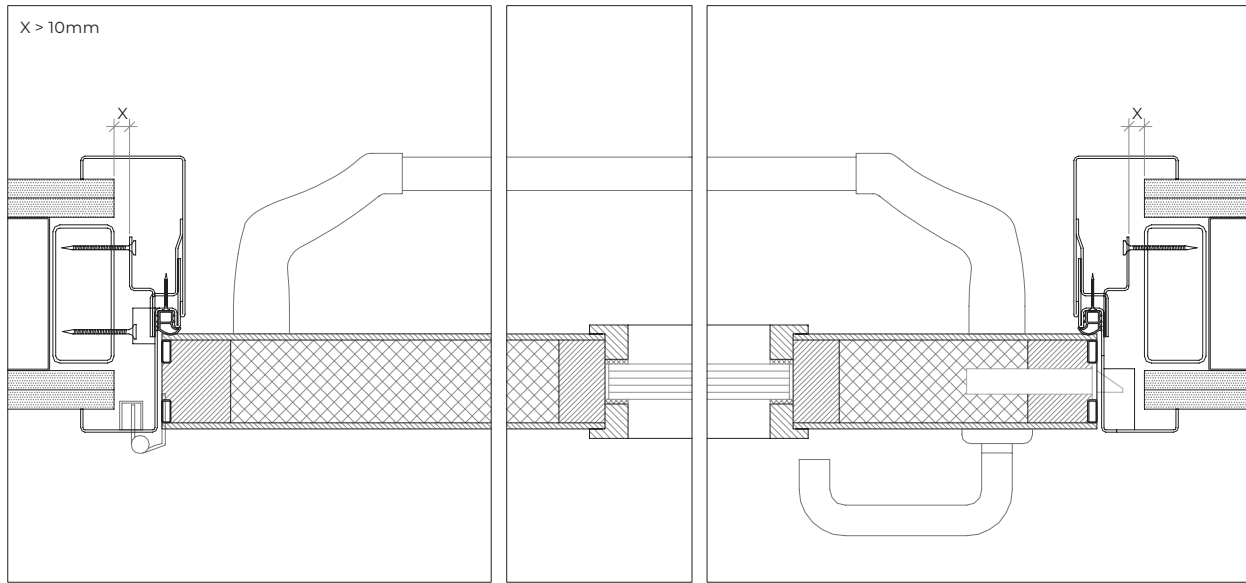
flush glazing bead



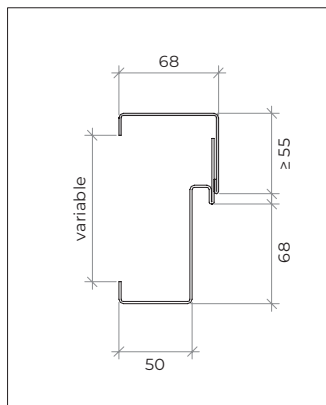
impact resistant door cladding:  
edges and face of the leaf



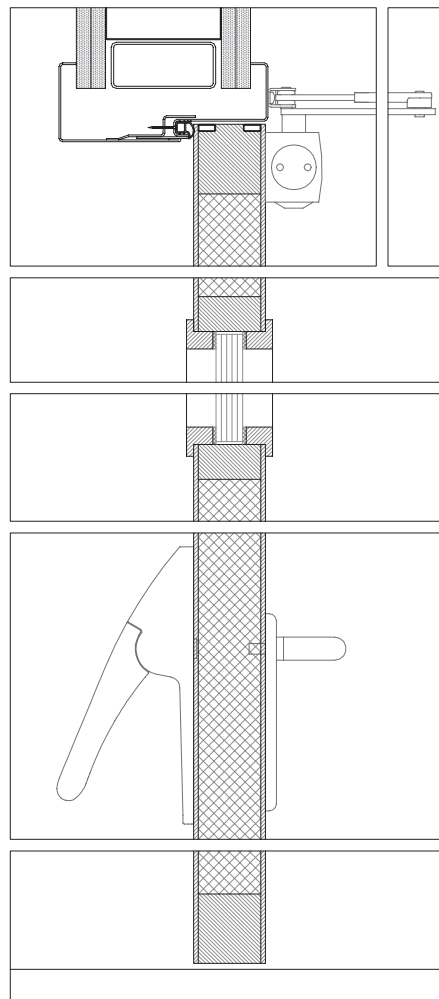
# details



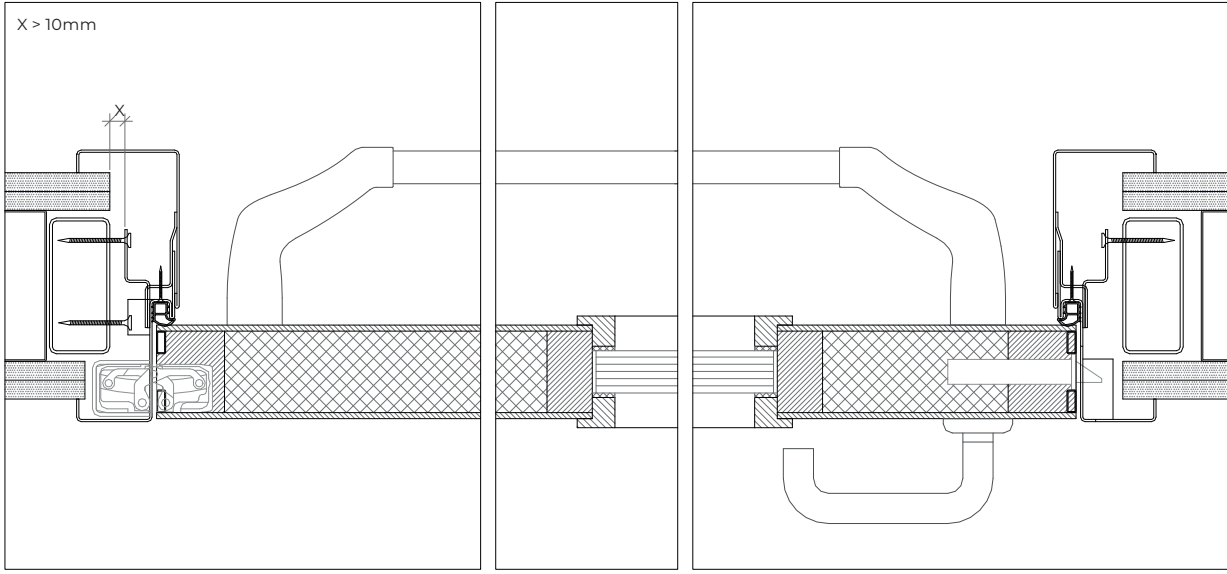
telescopic frame | visible hinges | rectangular vision panel | fixing screws and expanding foam | masonry wall



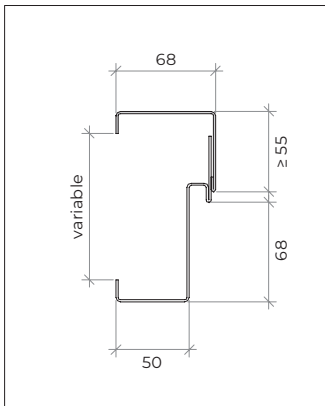
telescopic frame



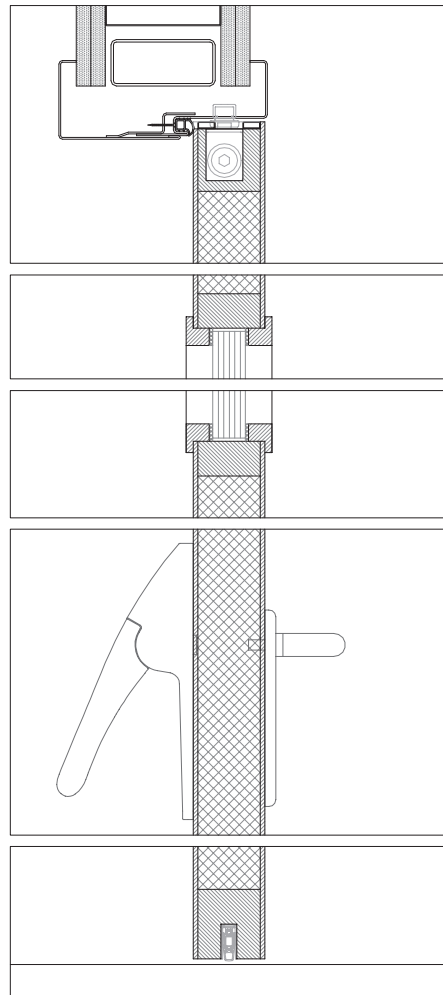
telescopic frame | door closer with an articulated arm | circular vision panel | automatic drop seal | flexible wall



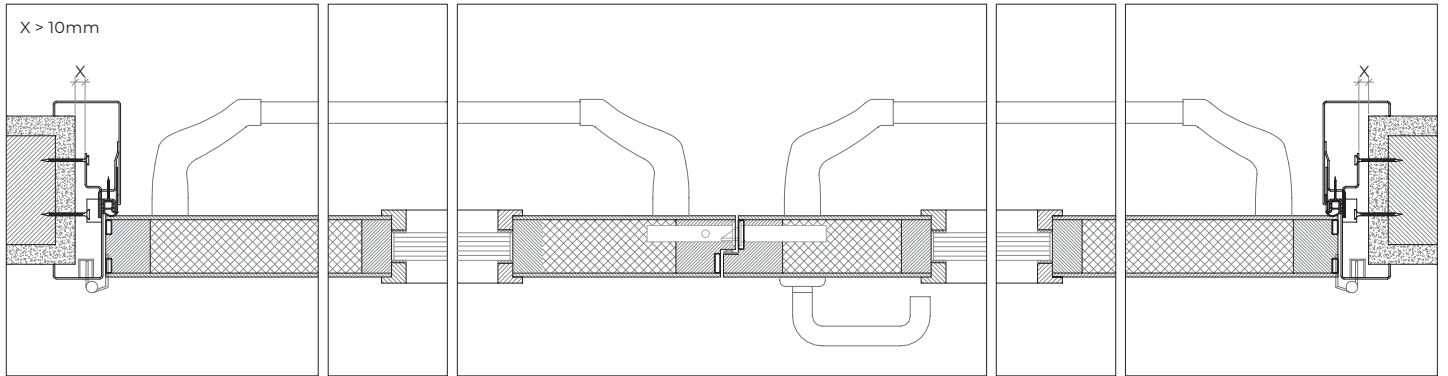
telescopic frame | hidden hinges | rectangular vision panel | fixing screws and expanding foam | flexible wall



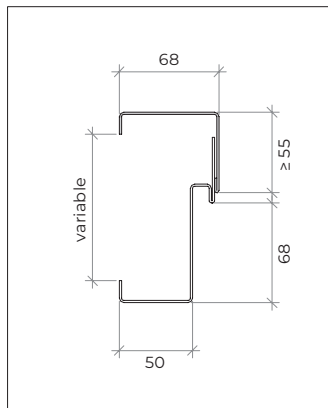
telescopic frame



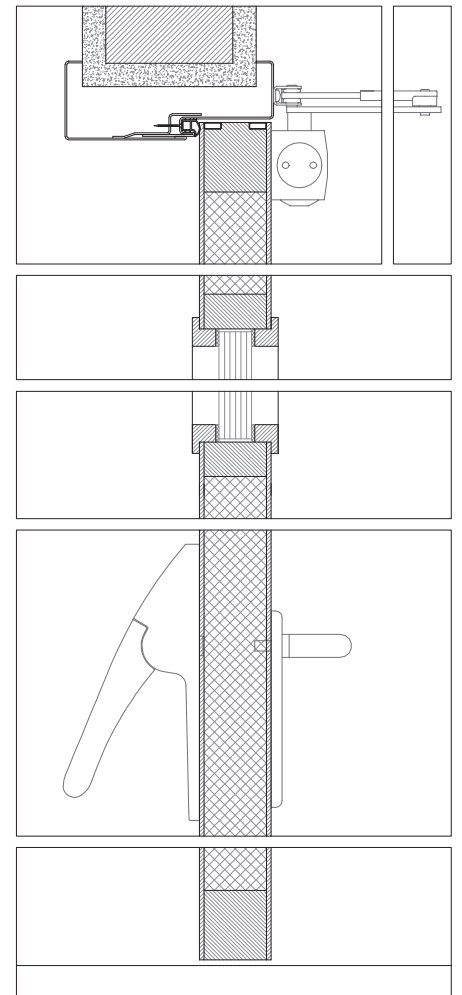
telescopic frame | hidden door closer | rectangular vision panel | automatic drop seal | flexible wall



telescopic frame | visible hinges | rectangular vision panel | fixing screws and expanding foam | masonry wall



telescopic frame



telescopic frame | door closer with an articulated arm | masonry wall

GROUP COMPANY



---

**TRIA SA.**

Parque Ind. Manuel Lourenço Ferreira - Lt.43  
3450 - 232 Mortágua, Portugal  
//+351 231 927 480 //geral@tria.pt  
**www.tria.pt**

VERS.**07**.23A