



S1A.60 & S2A.60

S SERIES







MODELS

S1A.60
single hinged leaf

S2A.60
double hinged leaf



MODELS

S1A.60

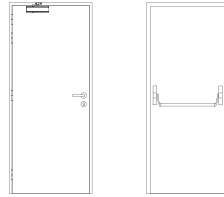
S2A.60

description

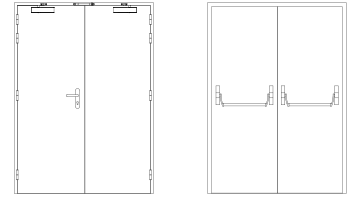
Hinged wooden door with frame made of solid wood pieces. It contains acoustic and intumescent seals that ensure the necessary tightness against flames and hot gases, as well as a high acoustic attenuation. The leaf is made of a solid wood edge and contains thermal insulating and acoustic materials according to the TRIA constructive system. An automatic seal and/or a intumescent grid, may be incorporated on the leaf, if necessary. The pivoting behavior of the door is ensured by three hidden hinges TECTUS – SIMONSWERK. If necessary, it is possible to incorporate an intumescent ^(a) grid in the leaf.

^(a) when the requirements for FR integrity and FR integrity and insulation do not exceed E 45 e E12 45, respectively.

specification



S1A.60 | single hinged leaf



S2A.60 | double hinged leaf

model | typology

classification achieved when tested

FR integrity (EN 1634-1) ⁽¹⁾	E 30 / E 45 / E 60	E 30 / E 45 / E 60
FR integrity and insulation (EN 1634-1) ⁽¹⁾	EI ₁ 30 / EI ₂ 30 / EI ₂ 45 / EI ₂ 60	EI ₁ 30 / EI ₂ 30 / EI ₂ 45 / EI ₂ 60
acoustic (EN 20140-3)	35 dB	35 dB

⁽¹⁾ classification according to standard 13501-2

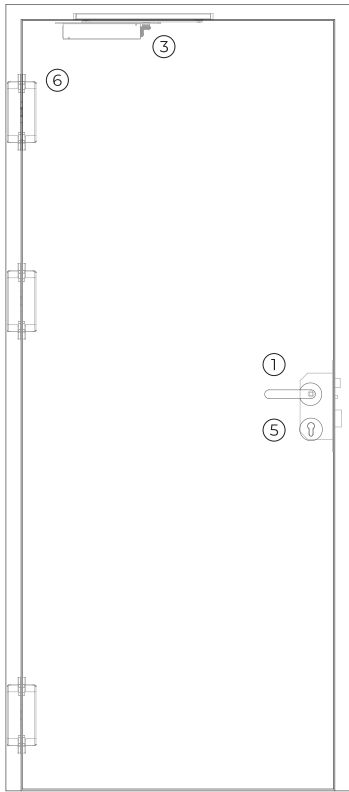
dimensions (mm)

W x H (standard) ⁽²⁾	800 / 900 x 2000 / 2100	1400 / 1600 / 1800 X 2000 / 2100
W maximum	950	1900
H maximum	2450	2450
external frame (standard)	W + 110 x H + 55	W + 110 x H + 55
other dimensions	upon request	upon request

⁽²⁾ W x H = width x height = free passage

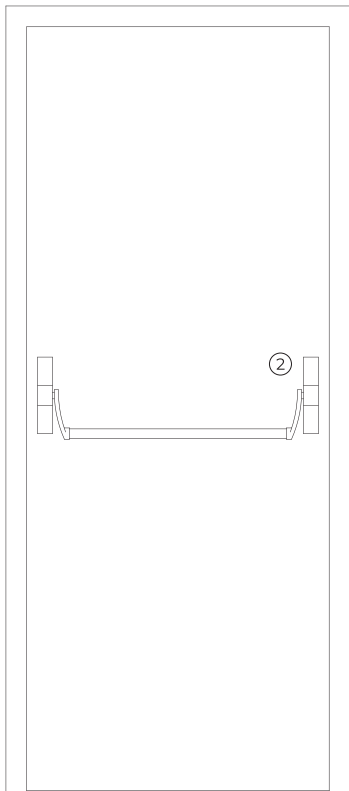
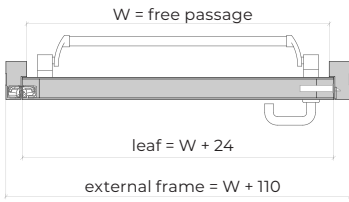
construction

leaf thickness (mm)	58	58
leaf weight (kg/m ²)	37	37
hinges (per leaf)	3	3
standard vision panel (mm)	Ø 300 / 300 x 400	Ø 300 / 300 x 400
finishing (standard)	mdf to paint	mdf to paint
finishing (optional)	veneering in various woods / materials	veneering in various woods / materials

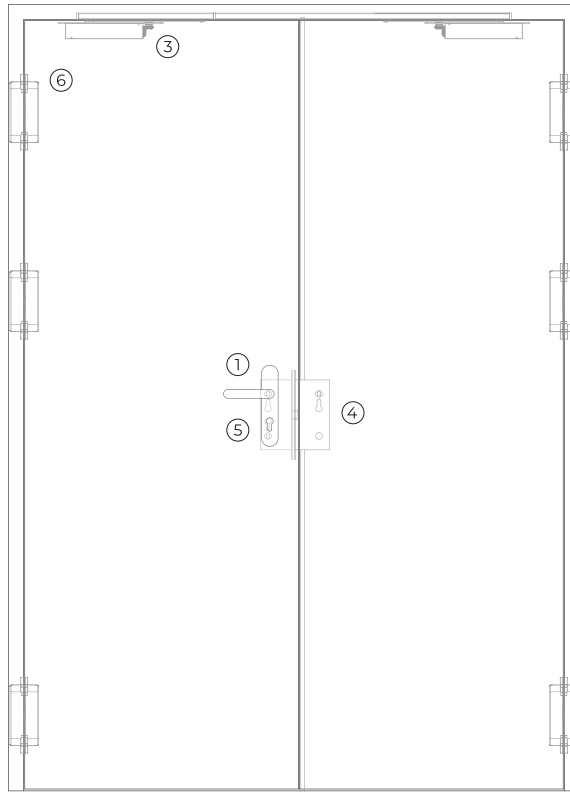


STA.60

exterior view

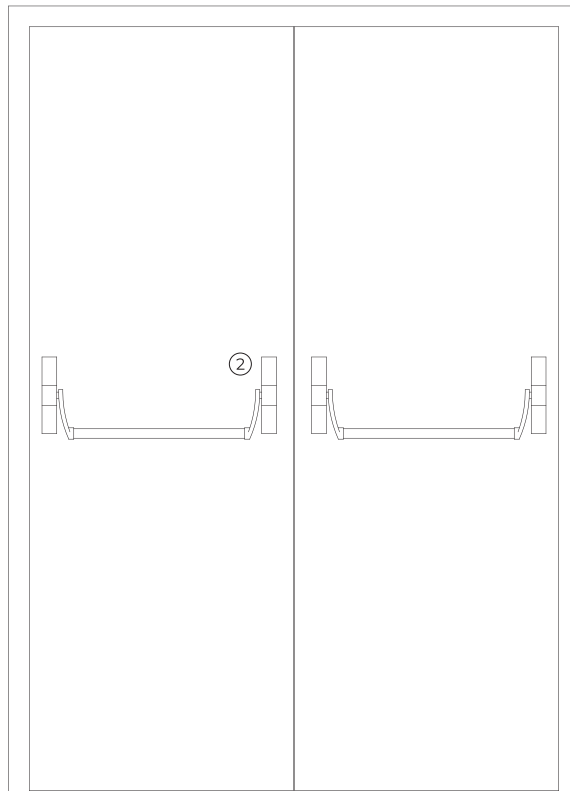
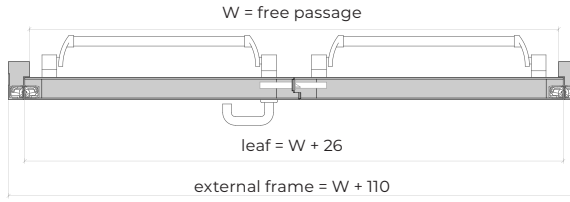


interior view

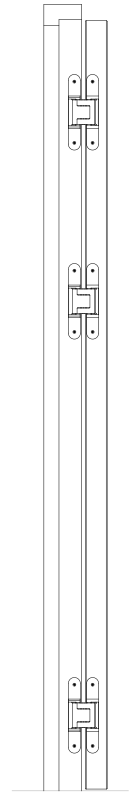


S2A.60

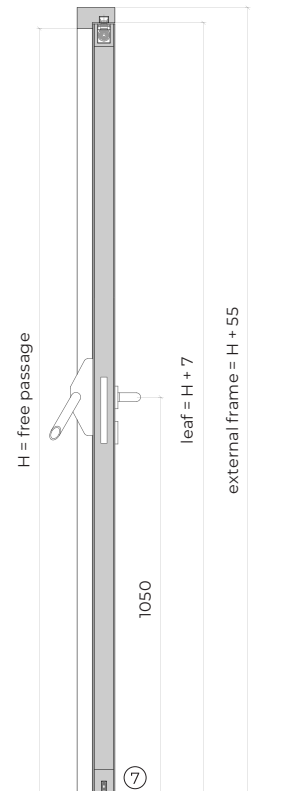
exterior view



interior view

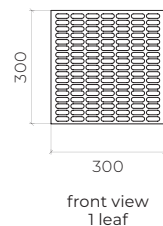
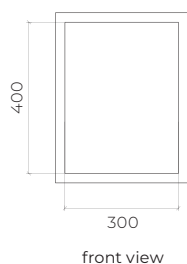
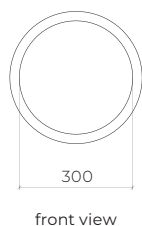


top view hinges



vertical section

optionals



accessories and hardware

S1A.60

S2A.60

handle / anti-panic bar ⁽³⁾

- | | | |
|---|----------|---|
| 1 | standard | anti-panic lever handle with drill finished in black (standard) or stainless steel. |
| 2 | standard | anti-panic bar with gear unit, tube, cover caps and arms finished in nylon black (standard) or stainless steel. |

⁽³⁾ alternatively, the door may be equipped with a pair of handles.

hidraulic door closer ⁽⁴⁾

- | | | | |
|---|----------|-----------------------------------|---|
| 3 | standard | hidden door closer. | hidden door closer + closing sequence selector. |
| | optional | door closer with sliding rail. | door closer with sliding rail + closing sequence selector. |
| | optional | door closer with articulated arm. | door closer with articulated arm + closing sequence selector. |

⁽⁴⁾ with electromagnetic hold-open (optional).

lock / counter lock

- | | | | |
|---|----------|---------------------------------------|--|
| 4 | standard | anti-panic lock with 1 locking point. | anti-panic lock with 1 locking point + counter lock. |
|---|----------|---------------------------------------|--|

cylinder

- | | | |
|---|----------|----------------------------------|
| 5 | standard | 1/2 cylinder (european profile). |
|---|----------|----------------------------------|

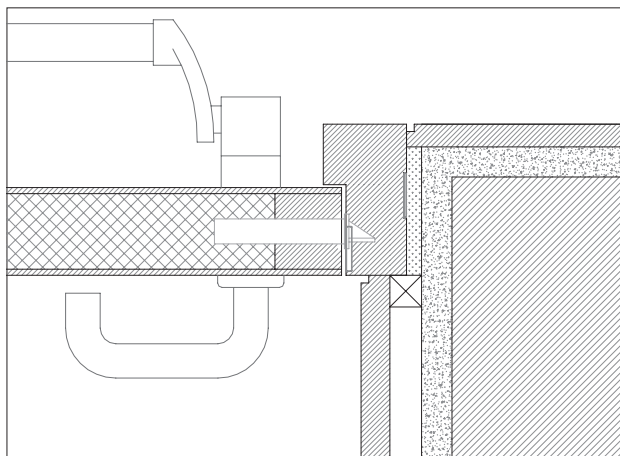
hinges

- | | | | |
|---|----------|----------------------------------|--|
| 6 | standard | 3 hidden hinges of this series. | 3 hidden hinges of this series (per leaf). |
| | optional | 4 visible hinges of this series. | 4 hidden hinges of this series (per leaf). |

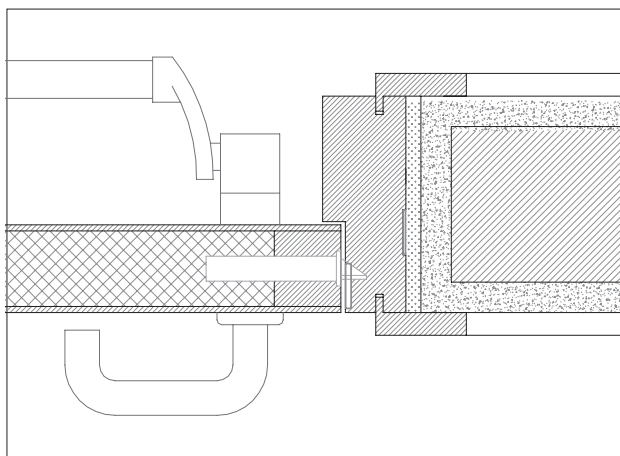
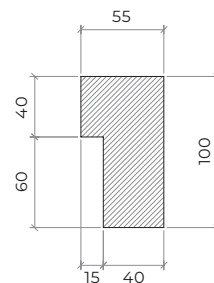
others

- | | | |
|---|-----------|---|
| 7 | optionals | automatic seal.
intumescent grid (EI 45).
rectangular and circular vision panels. |
|---|-----------|---|

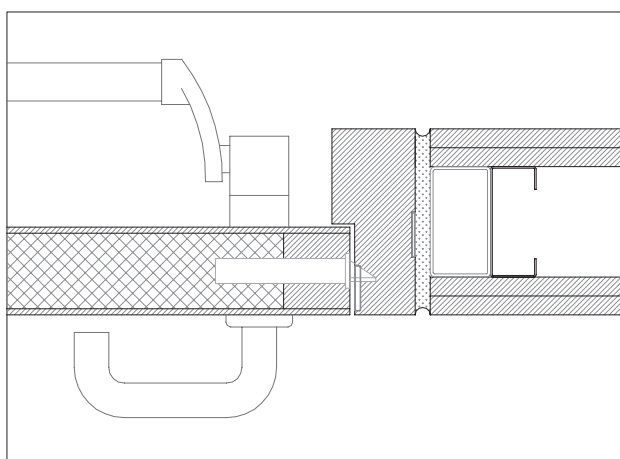
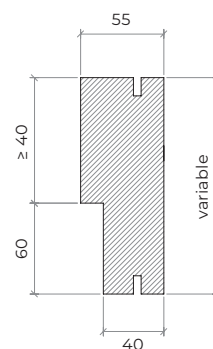
details



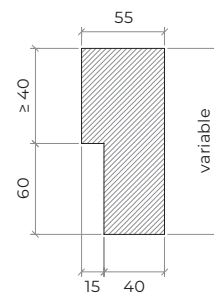
standard frame | masonry wall mounting | fixation with expandable foam | plaster and wood finishes

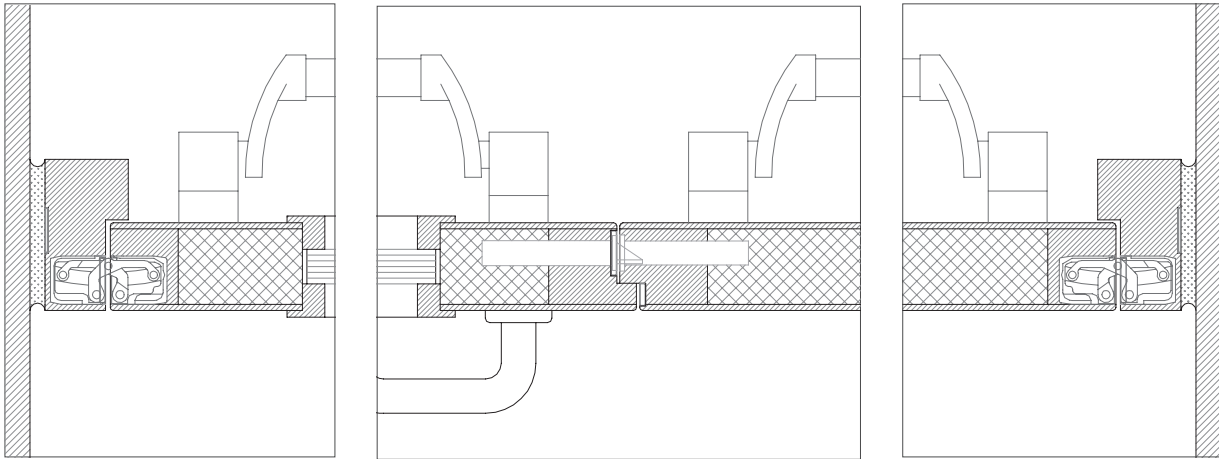


modified frame | concrete wall mounting | fixation with expandable foam | plaster and wood finishes

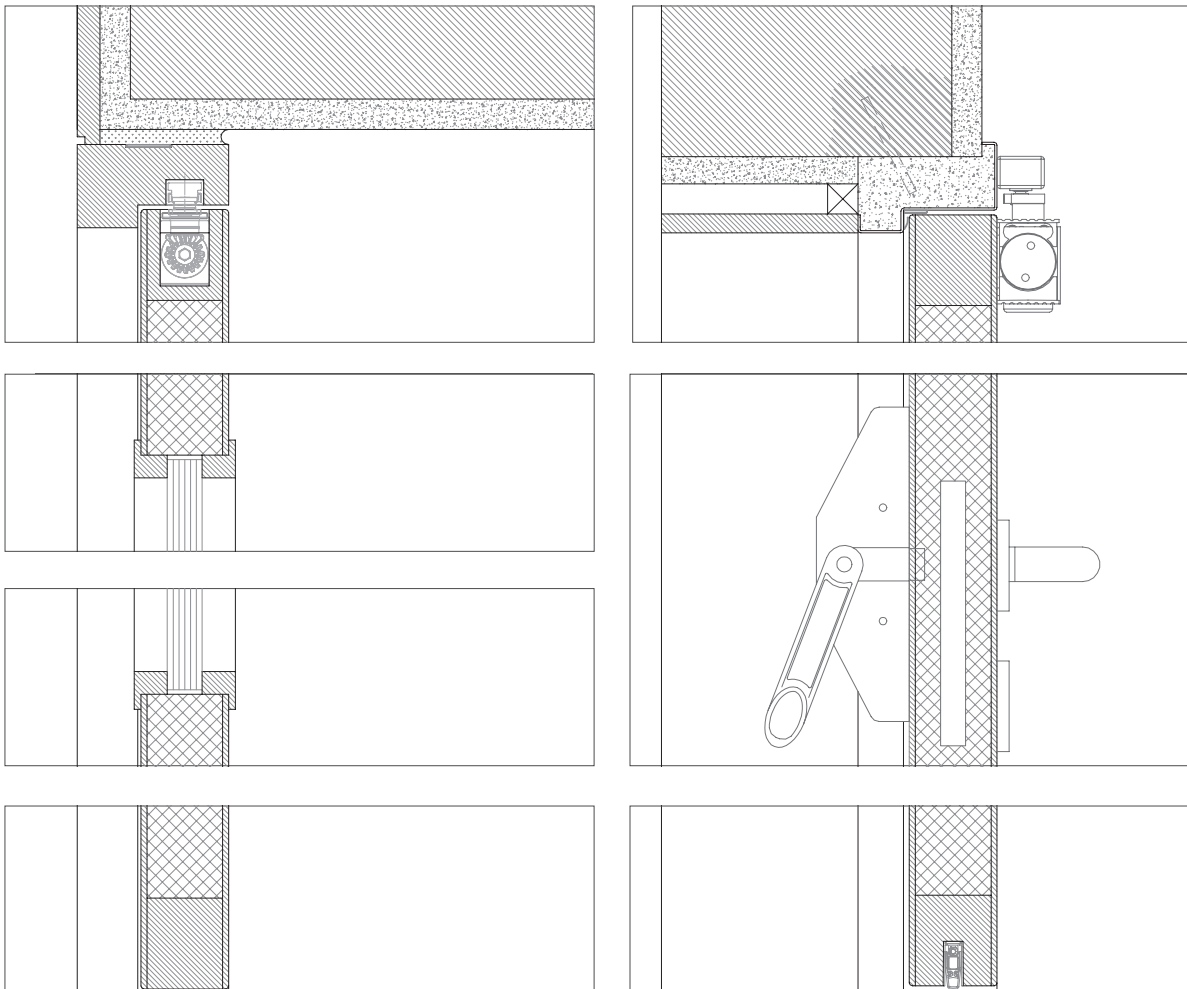


modified frame | gypsum wall mounting | metal portico fixation with expandable foam





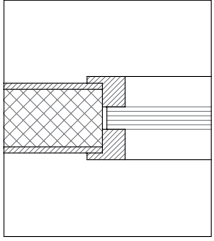
standard frame | concrete wall mounting | fixation with expandable foam



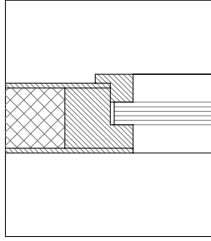
standard frame | masonry wall mounting | fixation with expandable foam | plaster and wood finishes | hidden door closer

modified metal frame | masonry wall mounting | steel rod fixation | plaster and wood finishes | non tested solution

types of vision panels



standard solution



GROUP COMPANY



TRIA SA.

Parque Ind. Manuel Lourenço Ferreira - Lt.43
3450 - 232 Mortágua, Portugal
//+351 231 927 480 //geral@tria.pt
www.tria.pt

VERS.11.22A