



PL1.FV & P2.F

PLANO SERIES



reddot design award winner
plano series doors





MODELS

PL1.FV
single hinged leaf

PL2.F
double hinged leaf



reddot design award winner
plano series doors



MODELS

PL1.FV

PL2.F

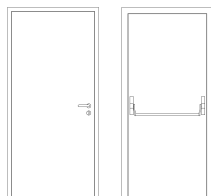
description

Hinged metal door with coplanar leaf and frame on both sides. The frame is made of bended electro-zinc coated steel profiles (1.5 mm thickness) welded to each other. The installation of the frame to the wall is made through face fixing, supported by a inner metallic portico to which the frame is coupled.

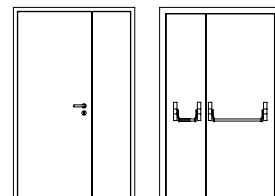
Steel spikes welded in the hinges side engage the leaf to the frame when the door is closed. The leaf is made of two electro-zinc coated steel panels (0.8 mm thickness) and contains thermal insulating and acoustic materials according to the TRIAconstructive system.

The use of intumescent joints ensures the necessary tightness against flames and hot gases. The pivoting behavior of the door is ensured by three hidden hinges TECTUS – SIMONSWERK.

specification



PL1.FV | single hinged leaf



PL2.F | double hinged leaf

model | typology

classification achieved when tested

	opposite side to the hinges	hinges side	both sides
FR integrity (EN 1634-1) ⁽¹⁾	E 30 / E 45 / E 60	E 30 / E 45	E 15 / E 30
FR integrity and insulation (EN 1634-1) ⁽¹⁾	EI ₂ 60	EI ₂ 20	EI ₂ 15 / EI ₂ 30

⁽¹⁾ classification according to standard EN 13501-2

dimensions (mm)

W x H (standard) ⁽²⁾	800 / 900 x 2000 / 2100	1350 x 2000 / 2100
W maximum	1109	1364
H maximum	2711	2357
external frame (standard)	W + 250 x H + 125	W + 250 x H + 125
other dimensions	upon request	upon request

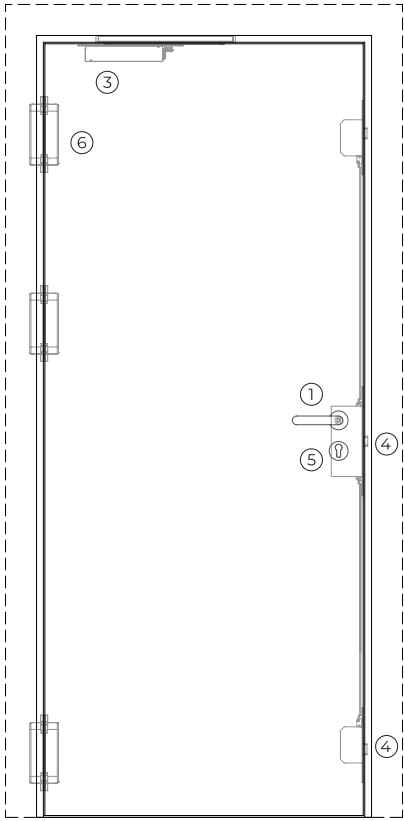
⁽²⁾ W x H = width x height = free passage

construction

leaf thickness (mm)	63 (to paint) / 69 (leafed)	63 (to paint) / 69 (leafed)
leaf weight (kg/m ²)	45 (to paint) / 50 (leafed)	45 (to paint) / 50 (leafed)
hinges (per leaf)	3 / 4 ⁽³⁾ (hidden)	3 / 4 ⁽³⁾ (hidden)
standard vision panel (mm)	Ø 300 / 300 x 400 / 500 x 1500	N/A
finishing (standard)	steel electrocoating paint / lacquering in standard RAL color ⁽⁴⁾	steel electrocoating paint / lacquering in standard RAL color ⁽⁴⁾
finishing (optional)	stainless steel / wood veneer	stainless steel / wood veneer

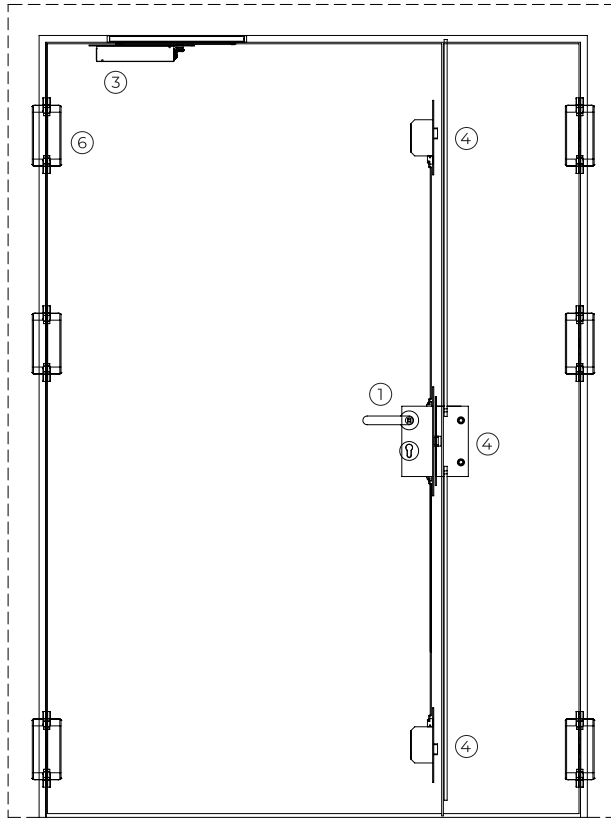
⁽³⁾ se H ≥ 2350 mm

⁽⁴⁾ standard RAL colors= 7035, 7038, 9005 e 9010



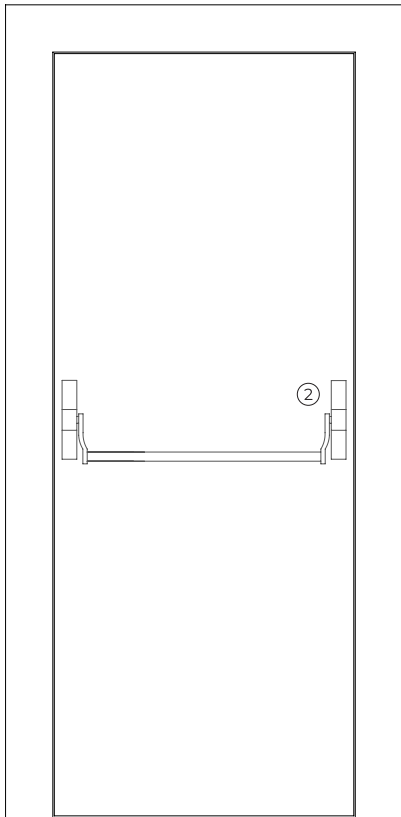
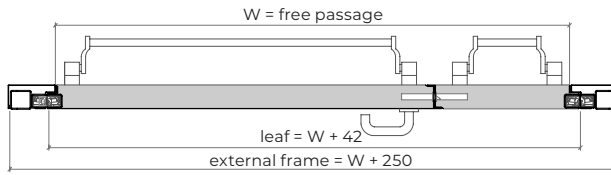
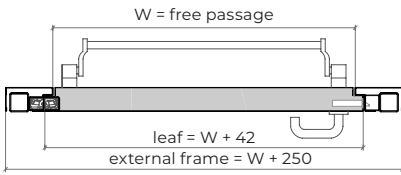
PL1.FV

exterior view

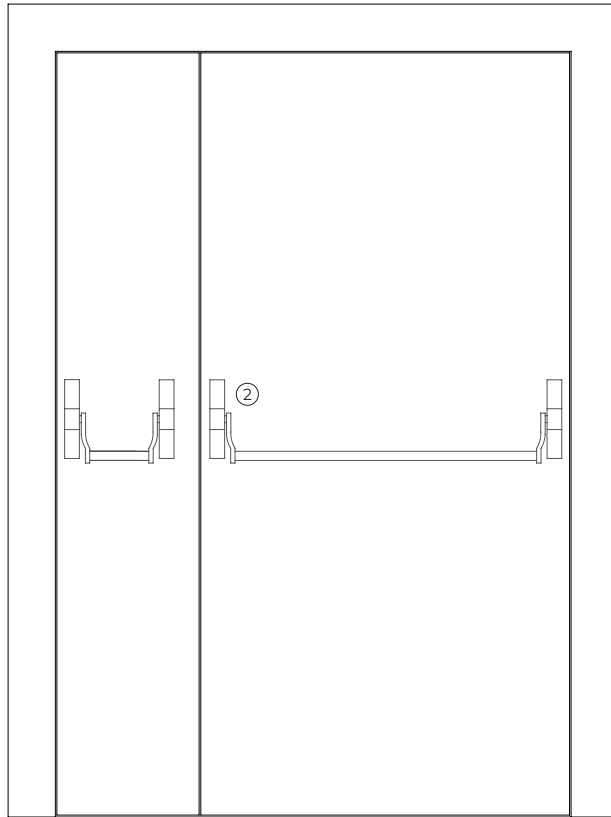


PL2.F

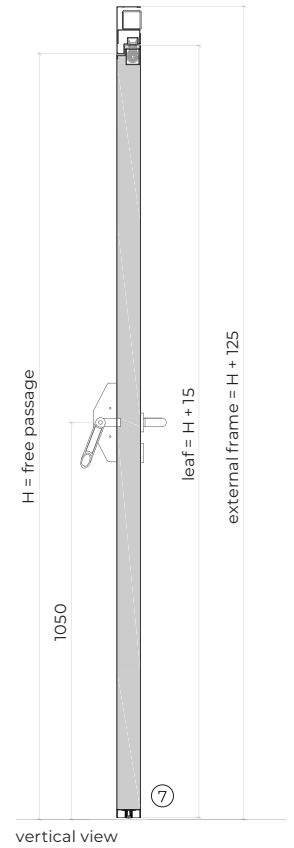
exterior view



interior view

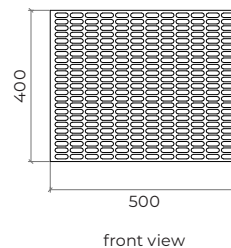
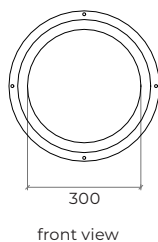
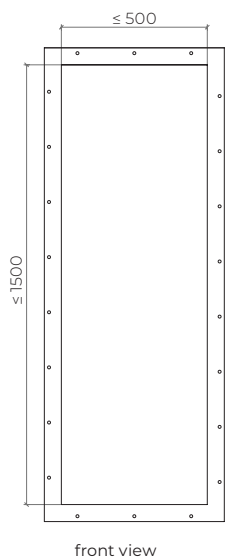


interior view



vertical view

optionals



accessories and hardware

PL1.FV

PL2.F

handle / anti-panic bar ⁽⁵⁾

- | | | |
|---|----------|---|
| 1 | standard | anti-panic lever handle with drill finished in black (standard) or stainless steel. |
| 2 | standard | anti-panic bar with gear unit, tube, cover caps and arms finished in nylon black (standard) or stainless steel. |

⁽⁵⁾ alternatively, the door may be equipped with a pair of handles.

hidraulic door closer ⁽⁶⁾

- | | | | |
|---|----------|---------------------|---|
| 3 | standard | hidden door closer. | hidden door closers with closing sequence selector. |
|---|----------|---------------------|---|

⁽⁶⁾ with electromagnetic hold-open (optional)

lock / counter lock

- | | | | |
|---|----------|--|---|
| 4 | standard | anti-panic lock with 3 locking points. | anti-panic lock with 3 locking points + counter lock. |
|---|----------|--|---|

cylinder

- | | | |
|---|----------|----------------------------------|
| 5 | standard | 1/2 cylinder (european profile). |
|---|----------|----------------------------------|

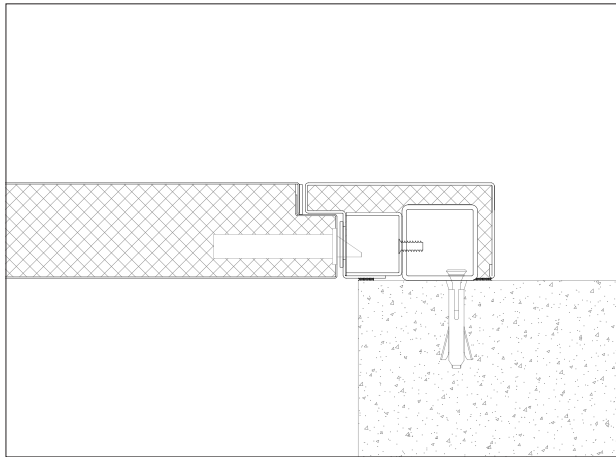
hinges

- | | | | |
|---|----------|------------------|-----------------------------|
| 6 | standard | 3 hidden hinges. | 3 hidden hinges (per leaf). |
|---|----------|------------------|-----------------------------|

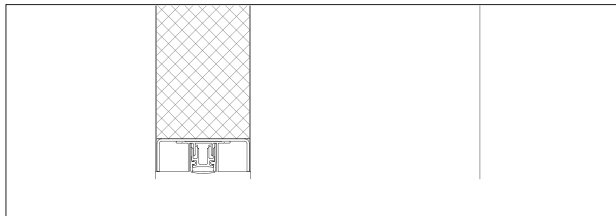
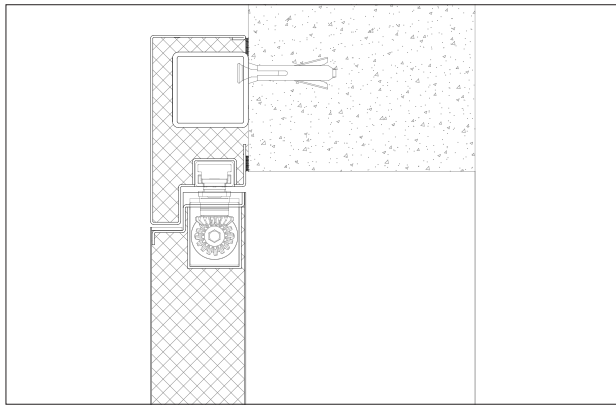
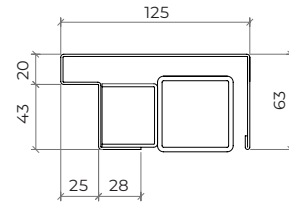
others

- | | | | |
|---|----------|--|--|
| 7 | opcional | automatic seal, electromagnetic lock, cable transfer, card reader. | |
|---|----------|--|--|

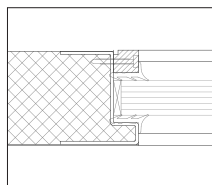
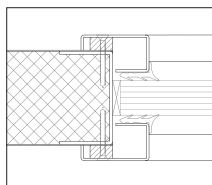
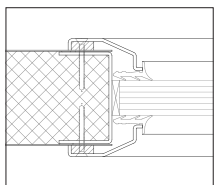
details



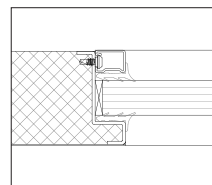
modified frame | concrete wall mounting with metallic portico
| metal wall plugs fixation



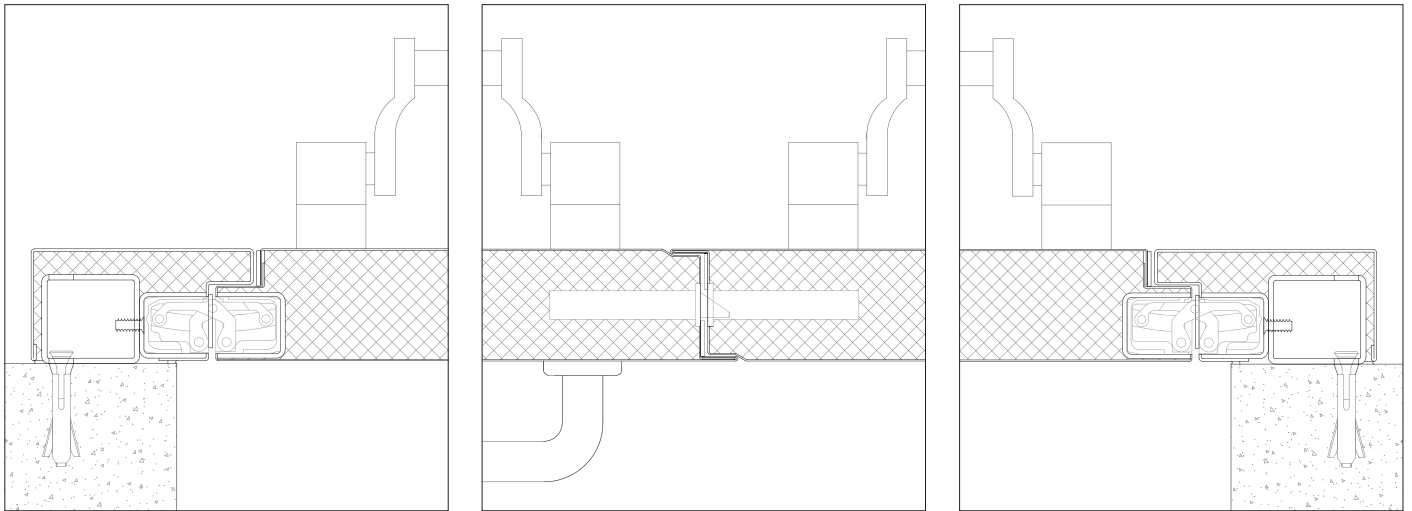
types of vision panels



exclusive solution of the series



exclusive solution of the series

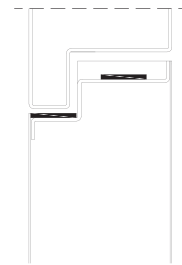


X > 20 mm (steel rod fixation)

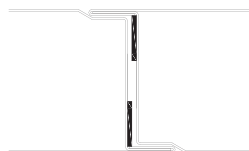
modified frame | concrete wall mounting with metallic portico | metal wall plugs fixation

technical details

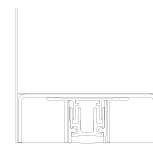
The use of intumescent joints ensures the necessary tightness against flames and hot gases. The two leaves are connected in their lower part by a bended steel u-profile that contains an automatic seal.



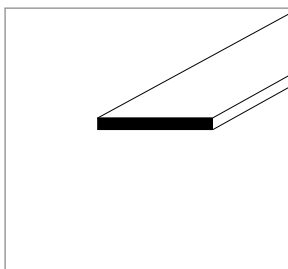
single leaf
horizontal section



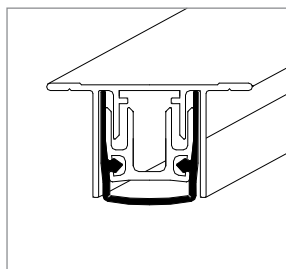
double leaf
horizontal section



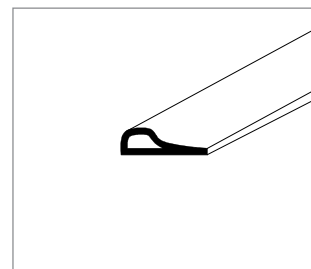
vertical section



intumescent seal



automatic seal



acoustic and intumescent seal

GROUP COMPANY



TRIA SA.

Parque Ind. Manuel Lourenço Ferreira - Lt.43
3450 - 232 Mortágua, Portugal
//+351 231 927 480 //geral@tria.pt
www.tria.pt

VERS.10.22A