

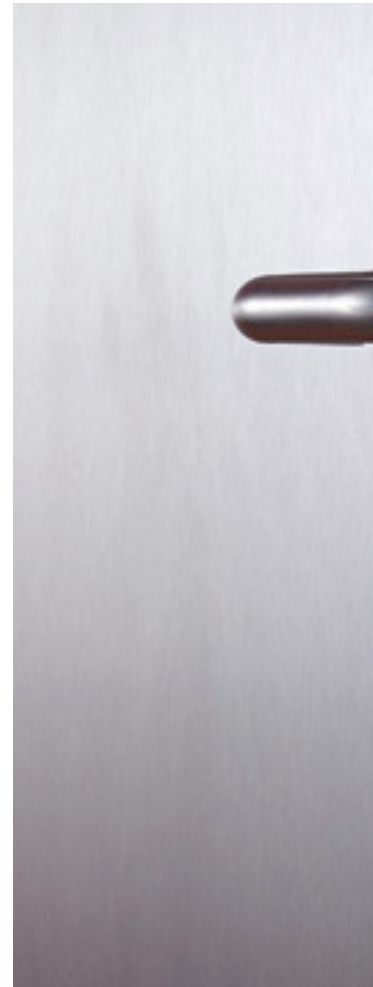


PL1.FC

PLANO SERIES



reddot design award winner
plano series doors





MODEL

PLI.FC
single hinged leaf



reddot design award winner
plano series doors



MODEL

PL1.FC

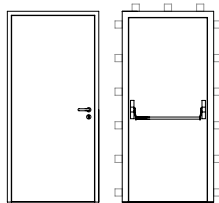
description

Hinged metal door with coplanar leaf and frame on both sides. The frame is made of bended electro-zinc coated steel profiles (1.5 mm thickness) welded to each other. The installation of the frame to the wall is made through face fixing, with reinforced metallic angles.

Steel spikes welded in the hinges side engage the leaf to the frame when the door is closed. The leaf is made of two electro-zinc coated steel panels (0.8 mm thickness) and contains thermal insulating and acoustic materials according to the TRIA constructive system.

The use of intumescent joints ensures the necessary tightness against flames and hot gases. The pivoting behavior of the door is ensured by three hidden hinges TECTUS – SIMONSWERK.

specification



model | typology

PL1.FC | single hinged leaf

classification achieved when tested

	opposite side to the hinges	hinges side
FR integrity (EN 1634-1) ⁽¹⁾	E 30 / E 45 / E 60	E 30 / E 45 / E 60
FR integrity and insulation (EN 1634-1) ⁽¹⁾	EI ₂ 30	EI ₂ 20

⁽¹⁾ classification according to standard EN 13501-2

dimensions (mm)

W x H (standard) ⁽²⁾	800 / 900 x 2000 / 2100
W maximum	1109
H maximum	2711
external frame (standard)	W + 150 x H + 75
other dimensions	upon request

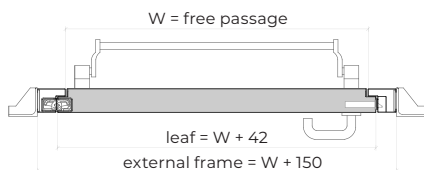
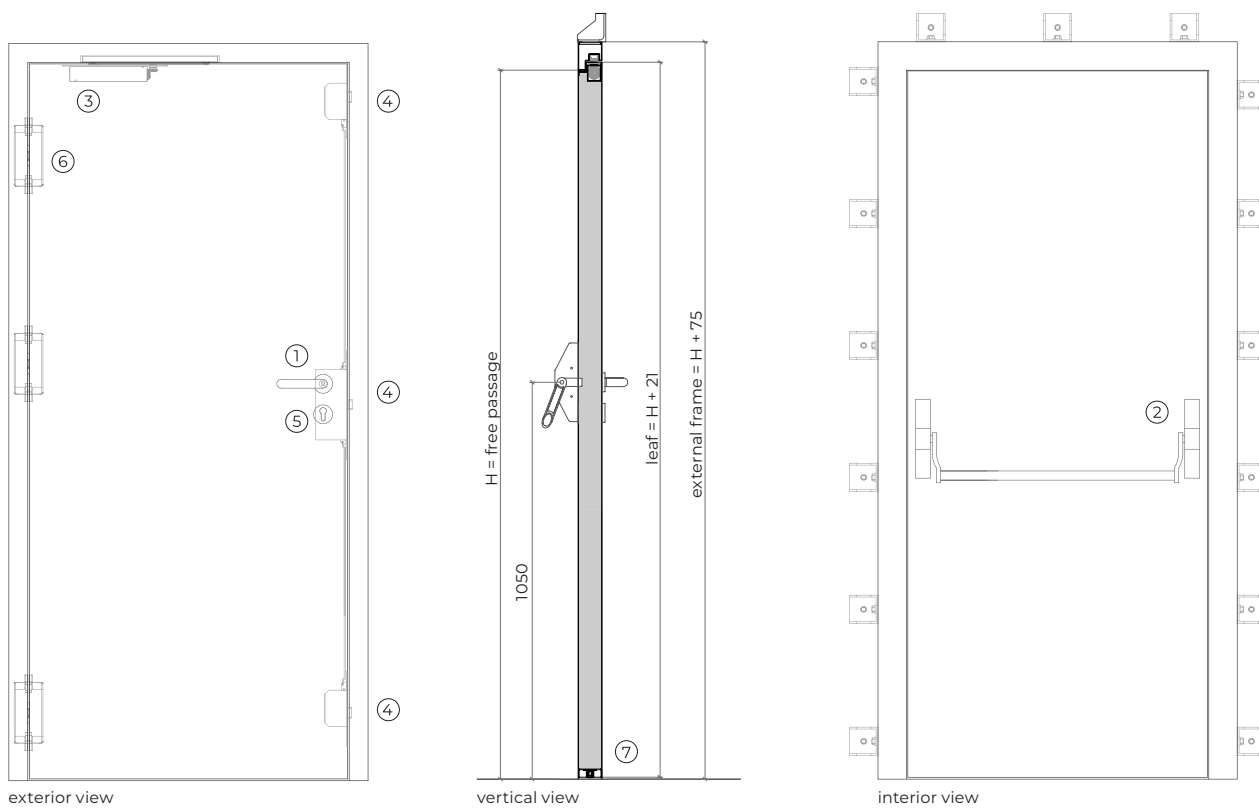
⁽²⁾ W x H = width x height = free passage

construction

leaf thickness (mm)	63 (to paint) / 69 (leafed)
leaf weight (kg/m ²)	45 (to paint) / 50 (leafed)
hinges (per leaf)	3 / 4 ⁽³⁾ (hidden)
standard vision panel (mm)	Ø 300 / 300 x 400
finishing (standard)	steel electrocoating paint / lacquering in standard RAL color ⁽⁴⁾
finishing (optional)	stainless steel / wood veneer

⁽³⁾ se H ≥ 2350 mm

⁽⁴⁾ standard RAL colors= 7035, 7038, 9005 e 9010



accessories and hardware

handle / anti-panic bar ⁽⁵⁾

- | | | |
|---|----------|---|
| 1 | standard | anti-panic lever handle with drill finished in black (standard) or stainless steel. |
| 2 | standard | anti-panic bar with gear unit, tube, cover caps and arms finished in nylon black (standard) or stainless steel. |

⁽⁵⁾ alternatively, the door may be equipped with a pair of handles.

hydraulic door closer ⁽⁶⁾

- | | | |
|---|----------|---------------------|
| 3 | standard | hidden door closer. |
|---|----------|---------------------|

⁽⁶⁾ with electromagnetic hold-open (optional)

lock / counter lock

- | | | |
|---|----------|--|
| 4 | standard | anti-panic lock with 3 locking points. |
|---|----------|--|

cylinder

- | | | |
|---|----------|----------------------------------|
| 5 | standard | 1/2 cylinder (european profile). |
|---|----------|----------------------------------|

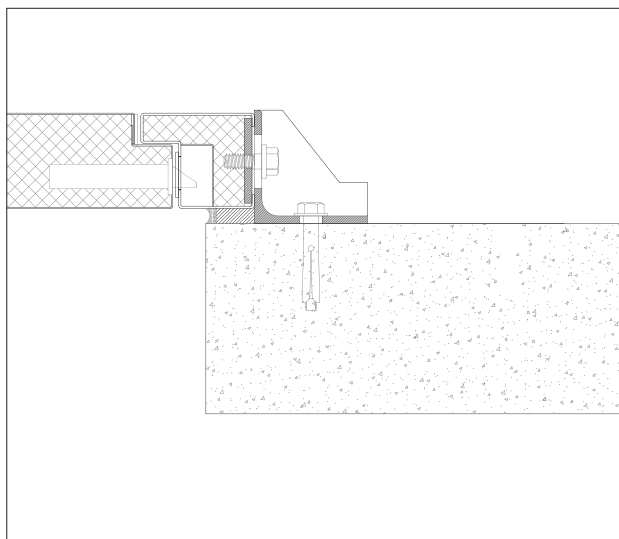
hinges

- | | | |
|---|----------|------------------|
| 6 | standard | 3 hidden hinges. |
|---|----------|------------------|

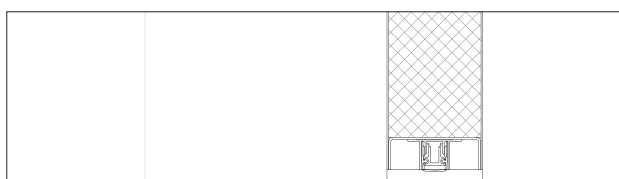
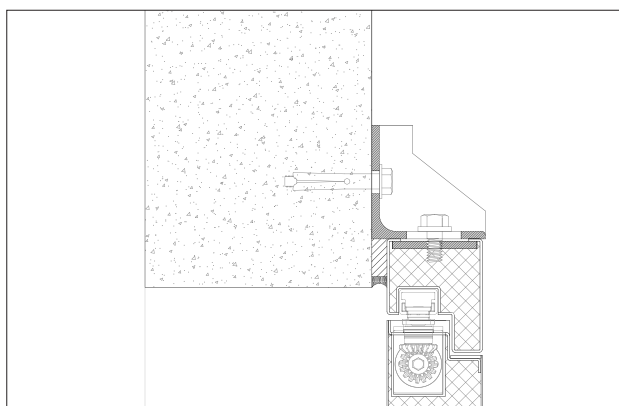
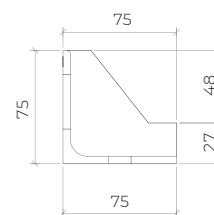
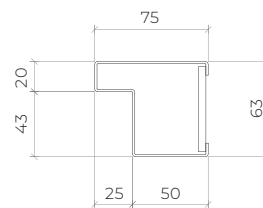
others

- | | | |
|---|----------|---|
| 7 | optional | automatic seal, electromagnetic lock, cable transfer, card reader |
|---|----------|---|

details

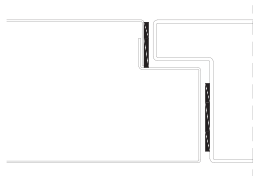
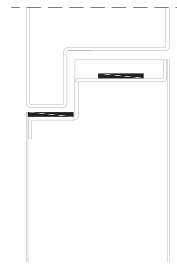


modified frame | concrete wall mounting | reinforced metallic angles fixation

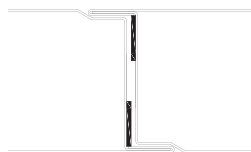


technical details

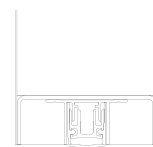
The use of intumescent joints ensures the necessary tightness against flames and hot gases. The two leaves are connected in their lower part by a bended steel u-profile that contains an automatic seal.



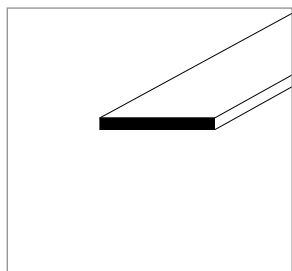
single leaf
horizontal section



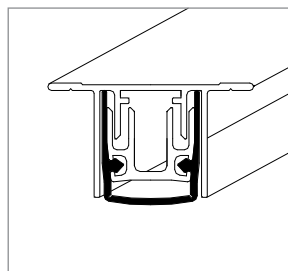
double leaf
horizontal section



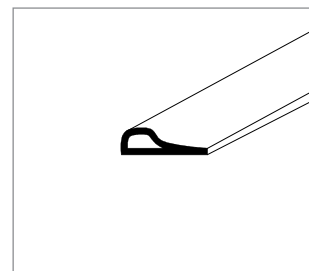
vertical section



intumescent seal



automatic seal



acoustic and intumescent seal

GROUP COMPANY



TRIA SA.

Parque Ind. Manuel Lourenço Ferreira - Lt.43
3450 - 232 Mortágua, Portugal
//+351 231 927 480 //geral@tria.pt

www.tria.pt

VERS.10.22A