

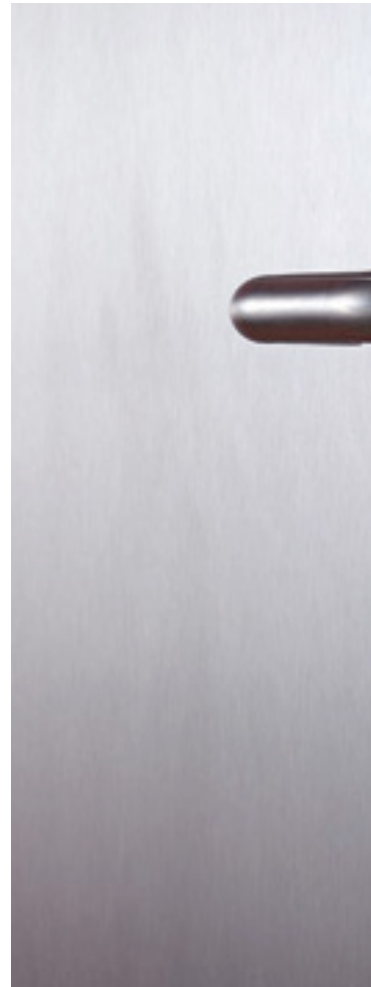


PL1.60GEX & PL2.60GEX

PLANO SERIES



reddot design award winner
plano series doors





MODELS

PL1.60GEX

single hinged leaf

PL2.60GEX

double hinged leaf



reddot design award winner
plano series doors



MODELS

PL1.60GEX

PL2.60GEX

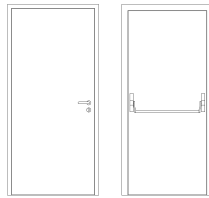
description

Hinged metal door with coplanar leaf and frame on both sides. The frame is made of bended electro-zinc coated steel profiles (1.5 mm thickness) welded to each other.

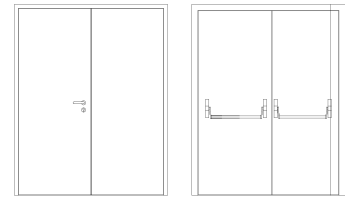
On the hinges side are welded steel spikes which engage the leaf's top when the door is closed. The leaf is made of two electro-zinc coated steel panels (0.8 mm thickness) and contains thermal insulating materials according to the constructive model TRIA.

The leaf's bottom contains an automatic seal. The use of acoustic and intumescent seals ensures a high level of sound attenuation and the necessary tightness against flames and hot gases. The pivoting behavior by three hidden hinges TECTUS – SIMONSWERK. If the door is placed in the exterior a sill should be used.

specification



PL1.60GEX | single hinged leaf



PL2.60GEX | double hinged leaf

model | typology

classification achieved when tested

FR integrity (EN 1634-1) ⁽¹⁾	E 30 / E 45 / E 60	E 30 / E 45 / E 60
FR integrity and insulation (EN 1634-1) ⁽¹⁾	EI ₁ 30 / EI ₂ 30 / EI ₂ 45 / EI ₂ 60	EI ₂ 30 / EI ₂ 45 / EI ₂ 60
resistance to repeated opening and closing maneuvers (EN 1191)	C5	C5
acoustic (EN 20140-3)	35 dB	30 / 31 dB
air permeability (EN 1026)	3	3
watertightness (EN 1027)	2A	2A
wind resistance (EN 12211)	C5	C3
operation forces (EN 12046-2)	1	1
torsion resistance (EN 984)	4	4
thermal coef. (EN ISO 10077-1)	1.95 W/(m ² .°C)	1.93 W/(m ² .°C)

⁽¹⁾ classification according to standard EN 13501-2

dimensions (mm)

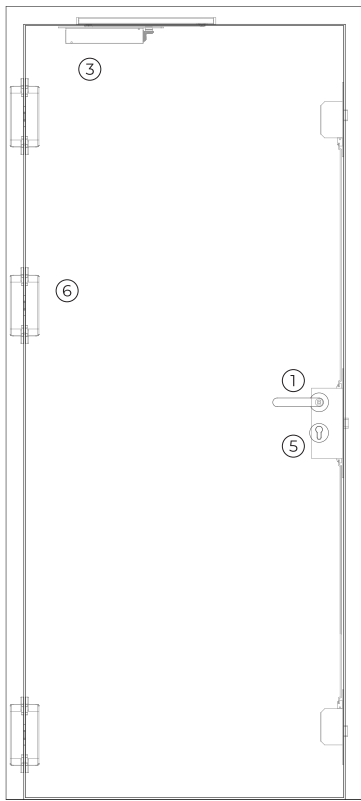
W x H (standard) ⁽²⁾	800 / 900 x 2000 / 2100	1400 / 1600 / 1800 x 2000 / 2100
W maximum	1155	2645
H maximum	3015	3015
external frame (standard)	W + 144 x H + 72	W + 144 x H + 72
other dimensions	upon request	upon request

⁽²⁾ W x H = width x height = free passage

construction

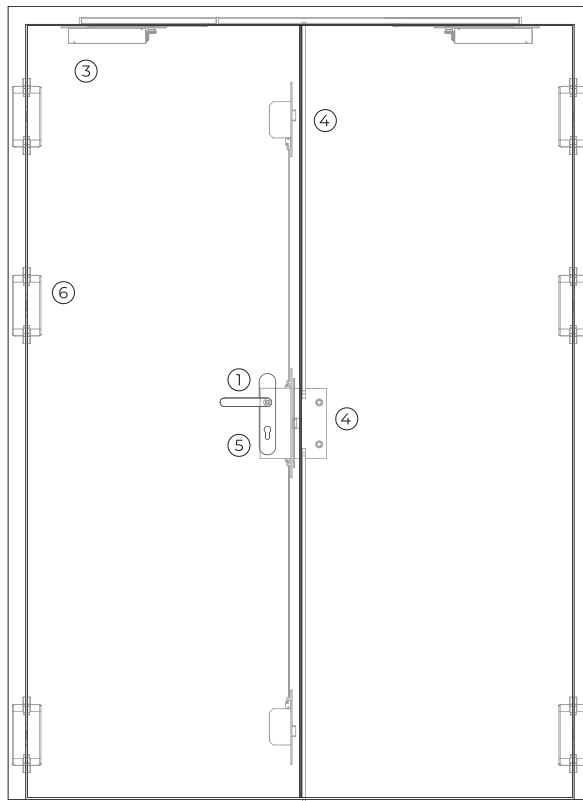
leaf thickness (mm)	63 (to paint) / 69 (leafed)	63 (to paint) / 69 (leafed)
leaf weight (kg/m ²)	45 (to paint) / 49 (leafed)	45 (to paint) / 49 (leafed)
hinges (per leaf)	3 (hidden)	3 (hidden)
standard vision panel (mm)	Ø 300 / 300 x 400	Ø 300 / 300 x 400
finishing (optional)	steel electrocoating paint/ lacquering in standard RAL color ⁽³⁾	steel electrocoating paint/ lacquering in standard RAL color ⁽³⁾
finishing (optional)	stainless steel/ wood veneer	stainless steel/ wood veneer

⁽³⁾ standard RAL colors = 7035, 7038, 9005 e 9010



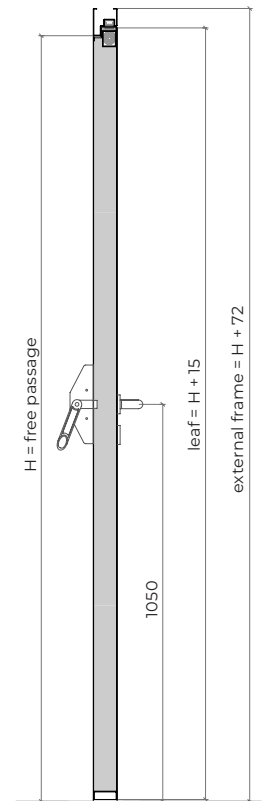
exterior view

PL1.60CEX

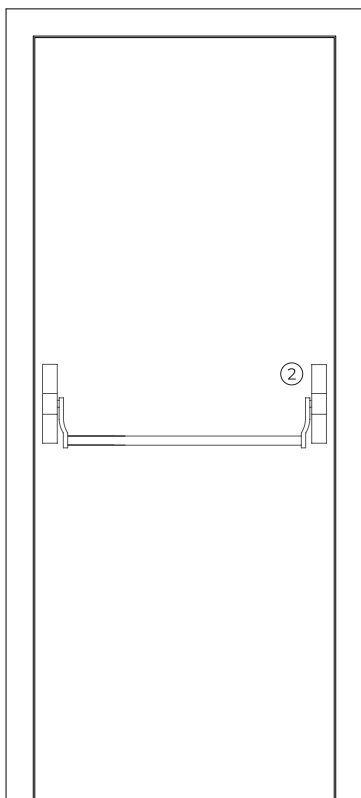
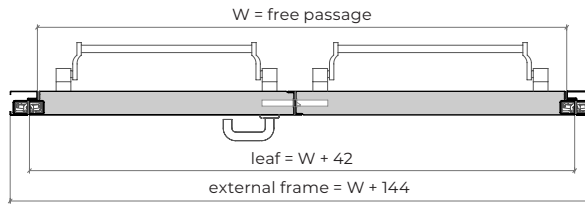
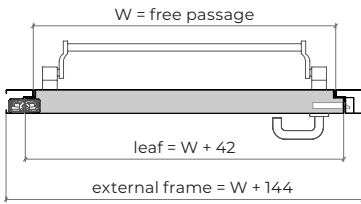


exterior view

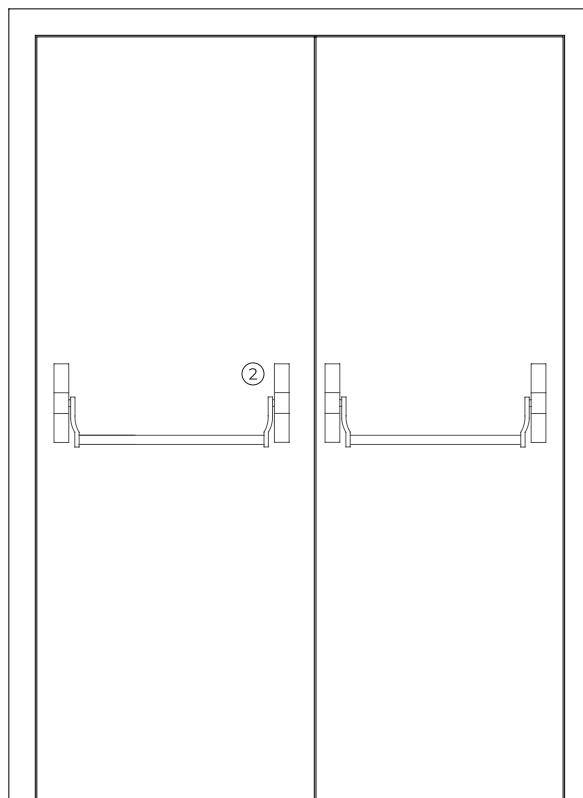
PL2.60CEX



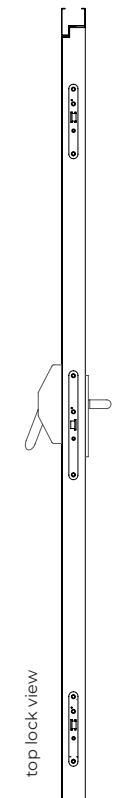
vertical view



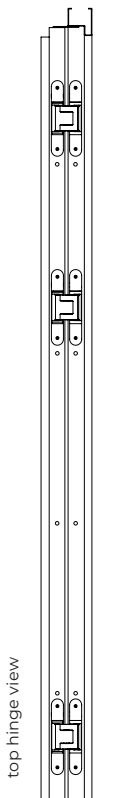
interior view



interior view

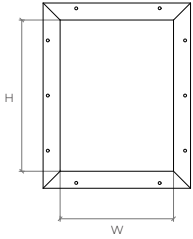


top lock view

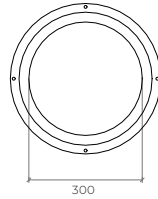


top hinge view

optionals



rectangular vision panel
AxL (400x300/1500x400/1500x500)



round vision panel

accessories and hardware

PL1.60GEX

PL2.60GEX

handle / anti-panic bar ⁽⁵⁾

- | | | |
|---|----------|-----------------------------------------------------------------------------------------------------------------|
| 1 | standard | anti-panic lever handle with drill finished in black (standard) or stainless steel. |
| 2 | standard | anti-panic bar with gear unit, tube, cover caps and arms finished in nylon black (standard) or stainless steel. |

⁽⁵⁾ alternatively, the door may be equipped with a pair of handles.

hidraulic door closer ⁽⁶⁾

- | | | | |
|---|----------|---------------------|-----------------------------------------------------|
| 3 | standard | hidden door closer. | hidden door closers with closing sequence selector. |
|---|----------|---------------------|-----------------------------------------------------|

⁽⁶⁾ with electromagnetic hold-open (optional).

lock / counter lock

- | | | | |
|---|----------|----------------------------------------|-------------------------------------------------------|
| 4 | standard | anti-panic lock with 3 locking points. | anti-panic lock with 3 locking points + counter lock. |
|---|----------|----------------------------------------|-------------------------------------------------------|

cylinder

- | | | |
|---|----------|----------------------------------|
| 5 | standard | 1/2 cylinder (european profile). |
|---|----------|----------------------------------|

hinges

- | | | | |
|---|----------|------------------|-----------------------------|
| 6 | standard | 3 hidden hinges. | 3 hidden hinges (per leaf). |
|---|----------|------------------|-----------------------------|

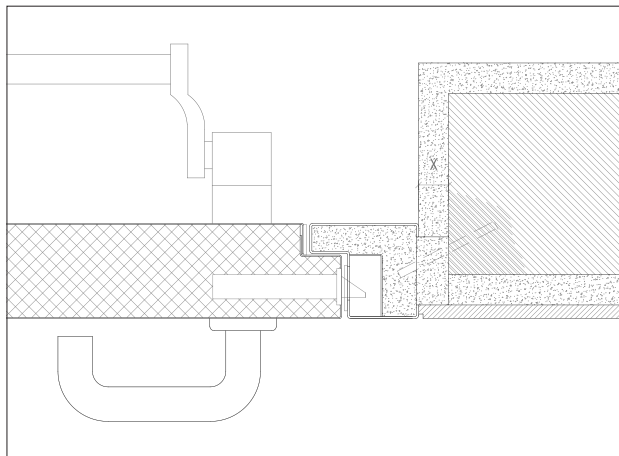
others

- | | | | |
|---|----------|----------------------------------------------------------------------------------------|--|
| 7 | optional | rectangular and round vision panel, electromagnetic lock, cable transfer, card reader. | |
|---|----------|----------------------------------------------------------------------------------------|--|

Note: option for coating available – maximum 4 mm | 69 mm (see details).

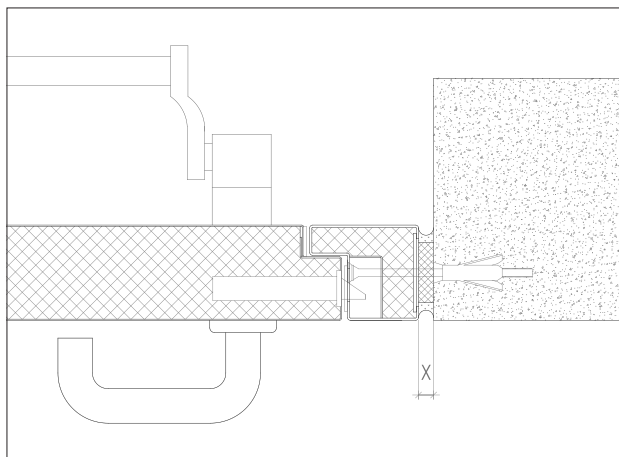
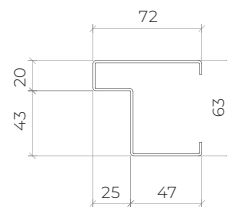
details

PAINT VERSION 63 mm



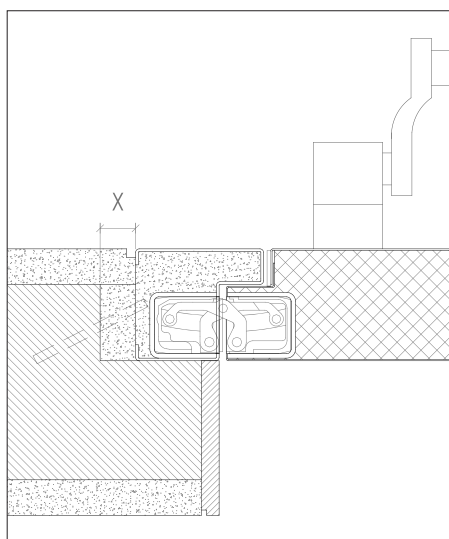
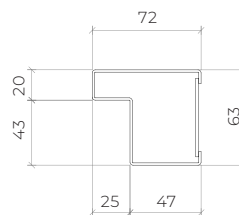
X > 20 mm (steel rod fixation)

standard frame | masonry wall mounting | steel rod fixation | plaster and wood finishes

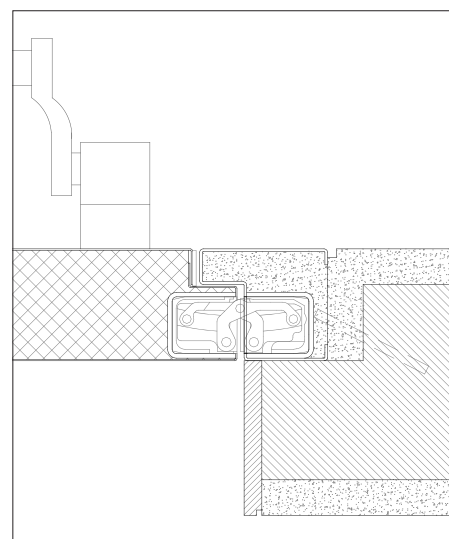
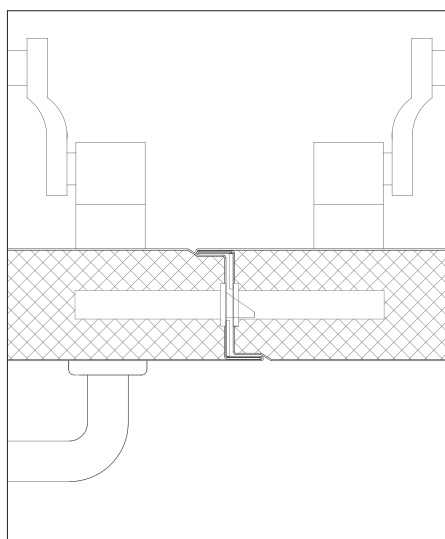


X ≥ 5 - 10 mm (for fixing with metal wall plugs according to wall type)

standard frame | concrete wall mounting | metal wall plugs fixation



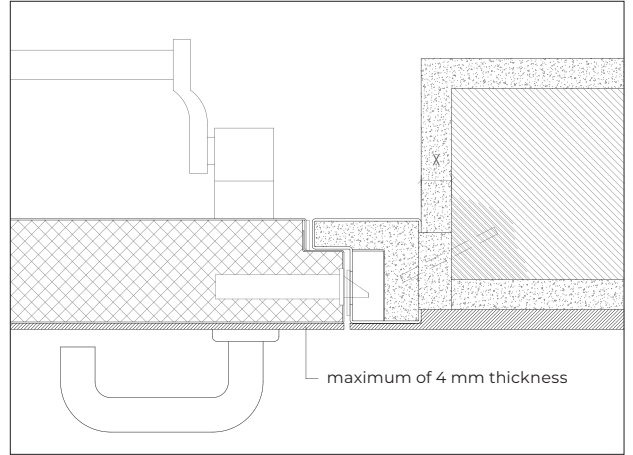
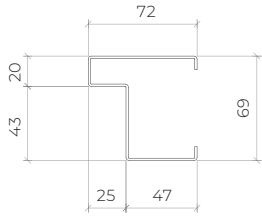
X > 20 mm (steel rod fixation)



standard frame | masonry wall mounting | steel rod fixation | plaster and wood finishes

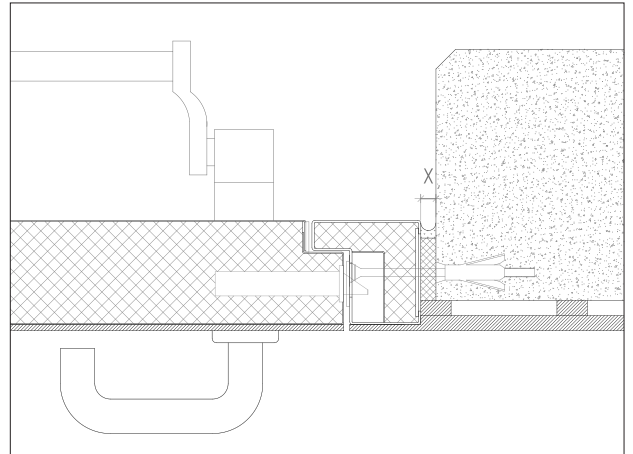
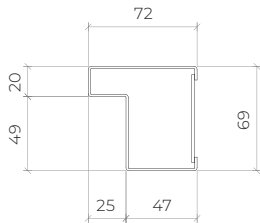
LEAFED VERSION 69 mm

standard frame | masonry wall mounting | steel rod fixation | plaster and wood finishes

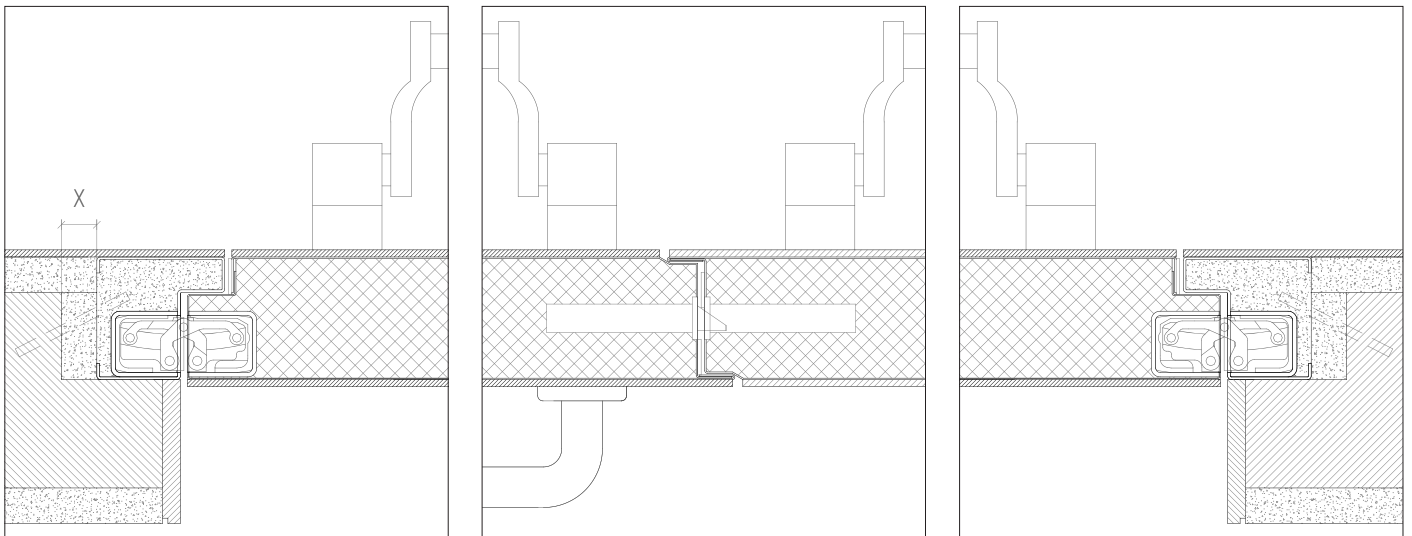


X > 20 mm (steel rod fixation)

standard frame | concrete wall mounting | metal wall plugs fixation | wood finishes



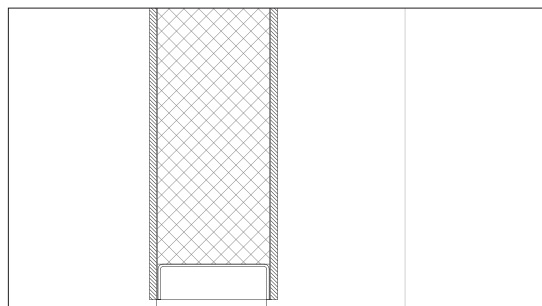
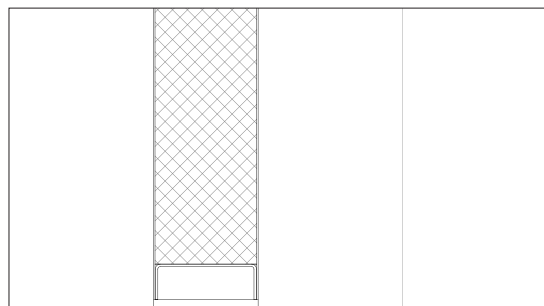
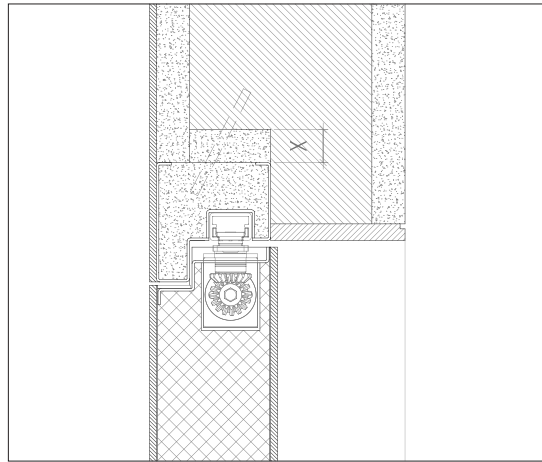
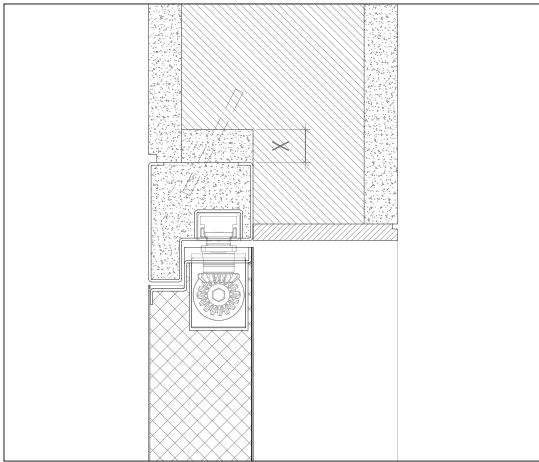
X ≥ 5 - 10 mm (for fixing with metal wall plugs according to wall type)



standard frame | leaf finished with 4 mm MDF | masonry wall mounting | steel rod fixation | plaster and wood finishes

PAINT VERSION 63 mm

LEAFED VERSION 69 mm



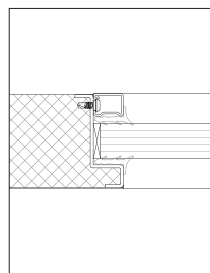
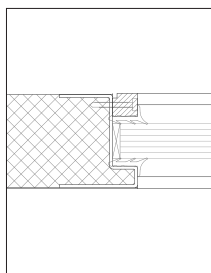
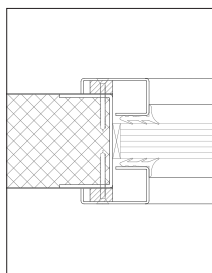
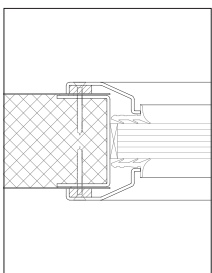
$X \geq 20$ mm (steel rod fixation)

standard frame | masonry wall mounting | steel rod fixation | plaster and wood finishes | hidden door closer

$X \geq 20$ mm (steel rod fixation)

standard frame | leaf finished with 4mm MDF | masonry wall mounting | steel rod fixation | plaster and wood finishes | hidden door closer

types of vision panels



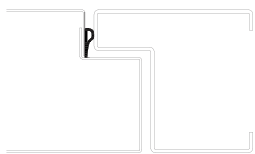
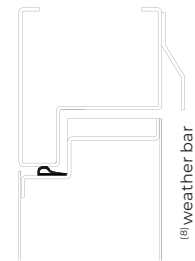
exclusive solution of the series

exclusive solution of the series

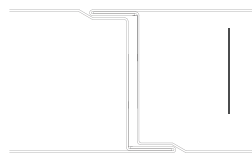
technical details

The use of acoustic and intumescent seals ensures a high level of sound attenuation and the necessary tightness against flames and hot gases. The two leaves are connected in their lower part by a bended steel u-profile that contains an automatic seal.

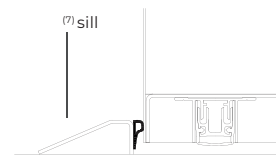
Note: if the door is placed in the exterior a sill should be used. If necessary, can be provided a sill of the type Tria ⁽⁷⁾, as well as a weather bar ⁽⁸⁾.



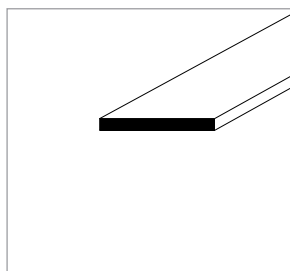
single leaf
horizontal section



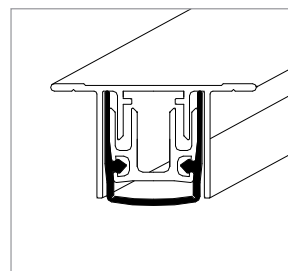
double leaf
horizontal section



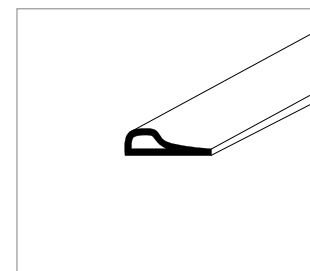
vertical section



intumescent seal



automatic seal



acoustic and intumescent seal

GROUP COMPANY



TRIA SA.

Parque Ind. Manuel Lourenço Ferreira - Lt.43
3450 - 232 Mortágua, Portugal
//+351 231 927 480 //geral@tria.pt

www.tria.pt

VERS.10.22A