



# PL1.60G & PL2.60G

## PLANO SERIES



**reddot design award winner**  
plano series doors





## MODELS

**PL1.60G**  
single hinged leaf

**PL2.60G**  
double hinged leaf



reddot design award winner  
plano series doors



## MODELS

**PL1.60G**

**PL2.60G**

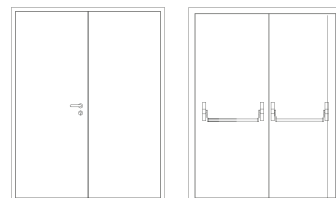
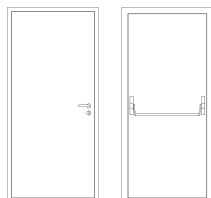
## description

Hinged metal door with coplanar leaf and frame on both sides. The frame is made of bended electro-zinc coated steel profiles (1.5 mm thickness) welded to each other.

Steel spikes welded in the hinges side engage the leaf to the frame when the door is closed. The leaf is made of two electro-zinc coated steel panels (0.8 mm thickness) and contains thermal insulating and acoustic materials according to the TRIA constructive system.

The use of intumescent joints ensures the necessary tightness against flames and hot gases. The pivoting behavior of the door is ensured by three hidden hinges TECTUS - SIMONSWERK. If necessary, it is possible to incorporate an intumescent grid in the leaf.

## specification



model | typology

**PL1.60G** | single hinged leaf

**PL2.60G** | double hinged leaf

## classification achieved when tested

FR integrity (EN 1634-1) <sup>(1)</sup>	E 30 / E 45 / E 60
FR integrity and insulation (EN 1634-1) <sup>(1)</sup>	EI <sub>1</sub> 30 / EI <sub>2</sub> 30 / EI <sub>2</sub> 45 / EI <sub>2</sub> 60
resistance to repeated opening and closing maneuvers (EN 1191)	C5

<sup>(1)</sup> classification according to standard EN 13501-2

## dimensions (mm)

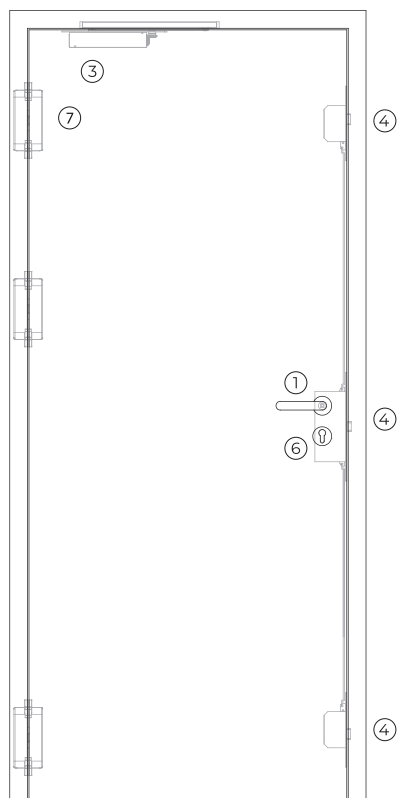
W x H (standard) <sup>(2)</sup>	800 / 900 x 2000 / 2100	1400 / 1600 / 1800 x 2000 / 2100
W maximum	1155	2645
H maximum	3015	3015
external frame (standard)	W + 144 x H + 72	W + 144 x H + 72
other dimensions	upon request	upon request

<sup>(2)</sup> W x H = width x height = free passage

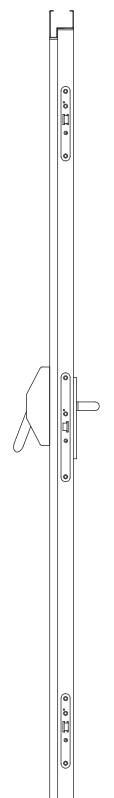
## construction

leaf thickness (mm)	63 (to paint) / 69 (leafed)	63 (to paint) / 69 (leafed)
leaf weight (kg/m <sup>2</sup> )	45 (to paint) / 49 (leafed)	45 (to paint) / 49 (leafed)
hinges (per leaf)	3 (hidden)	3 (hidden)
standard vision panel (mm)	Ø300 / 300x400 / 400x1500 / 500x1500	Ø300 / 300x400 / 400x1500 / 500x1500
finishing (standard)	steel electrocoating paint / lacquering in standard RAL color <sup>(3)</sup>	steel electrocoating paint / lacquering in standard RAL color <sup>(3)</sup>
finishing (optional)	wood veneer	wood veneer
intumescent grid (mm) (optional)	500x400	500x400

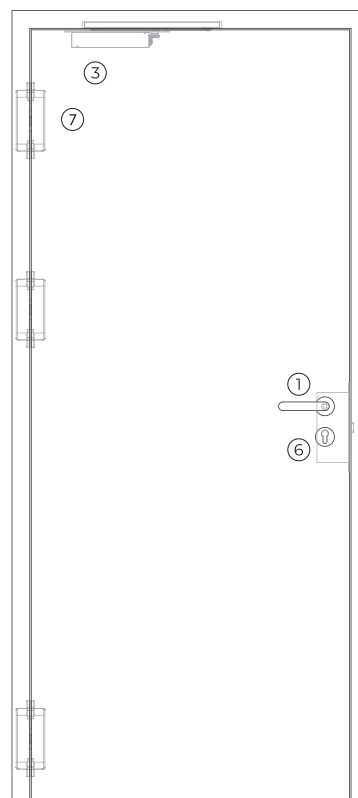
<sup>(3)</sup> standard RAL colors = 7035, 7038, 9005 e 9010



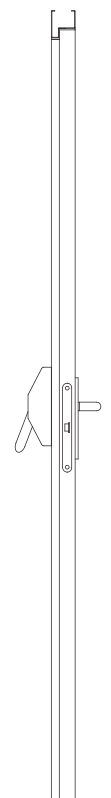
exterior view (3 point lock)



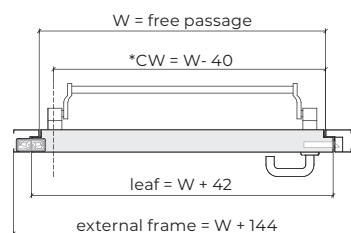
lock side view



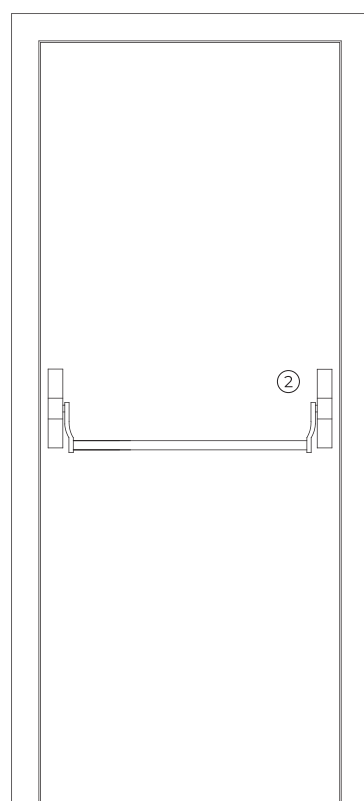
exterior view (single point lock)



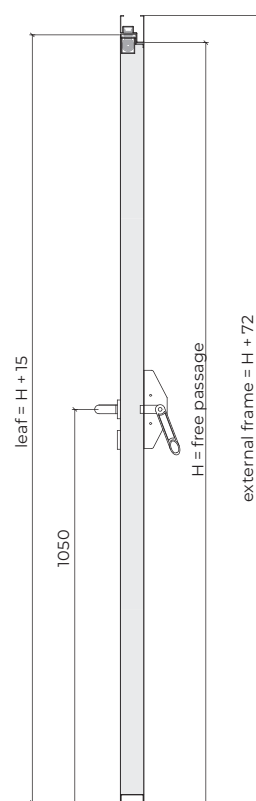
lock side view



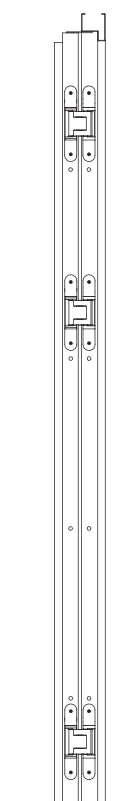
\*Clear Width, measured with the door leaf in a 90-degree open position excluding panic push bar and handles.



interior view



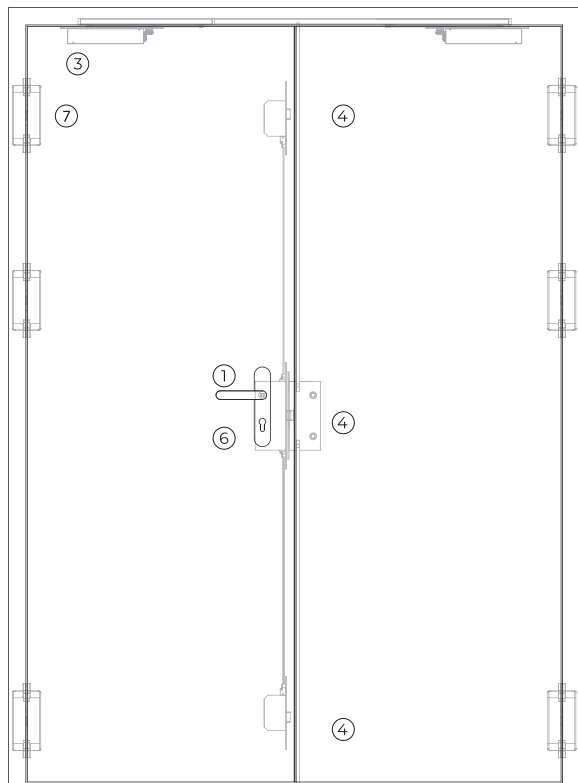
vertical section



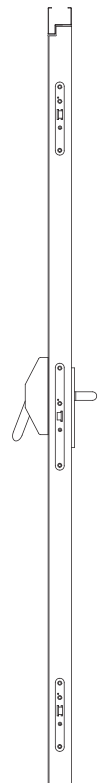
hinge side view



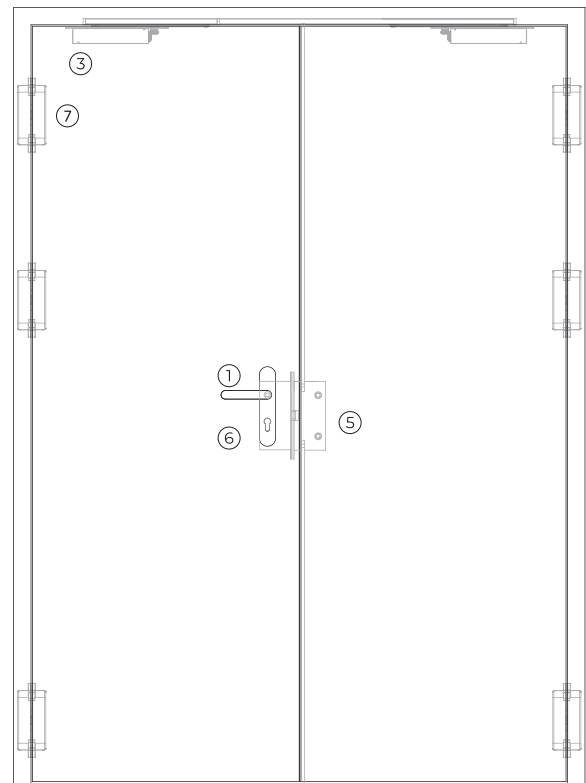
PL2.60G



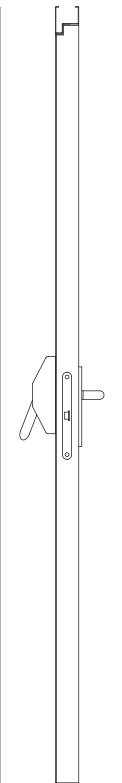
exterior view (3 point lock)



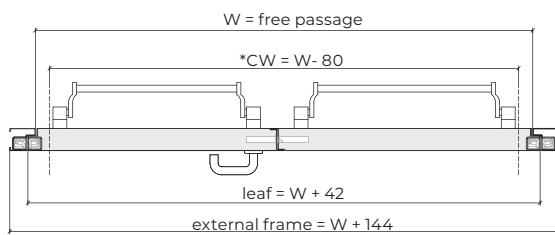
lock side view



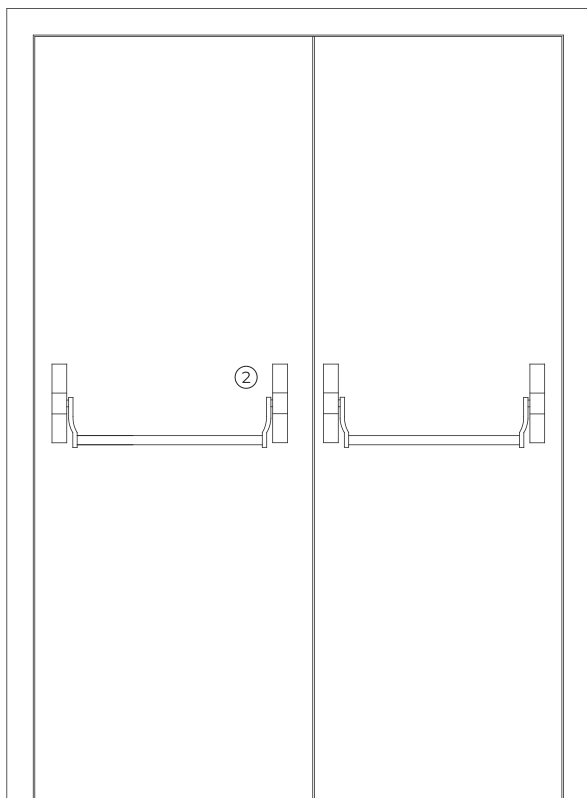
exterior view (single point lock)



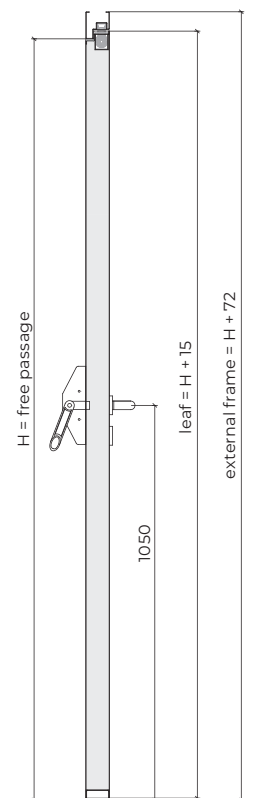
lock side view



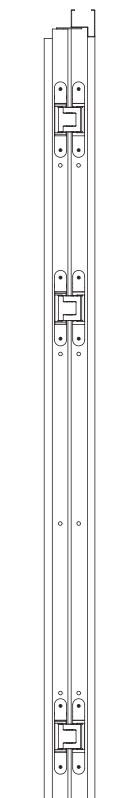
\*Clear Width, measured with the door leaf in a 90-degree open position excluding panic push bar and handles.



interior view

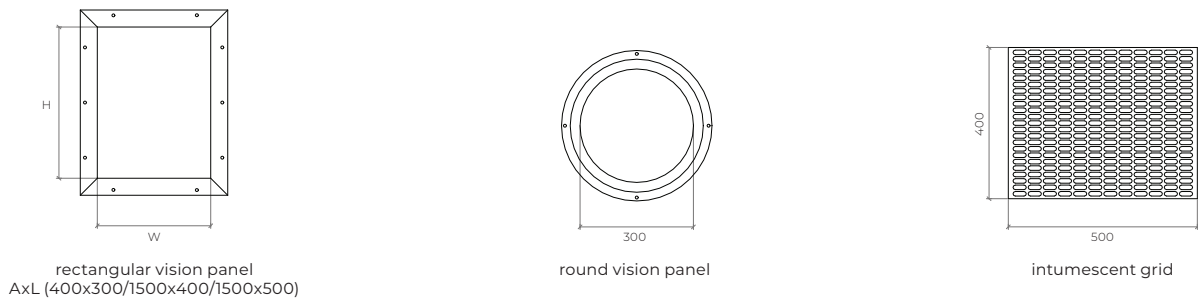


vertical section



hinge side view

# optionals



# accessories and hardware

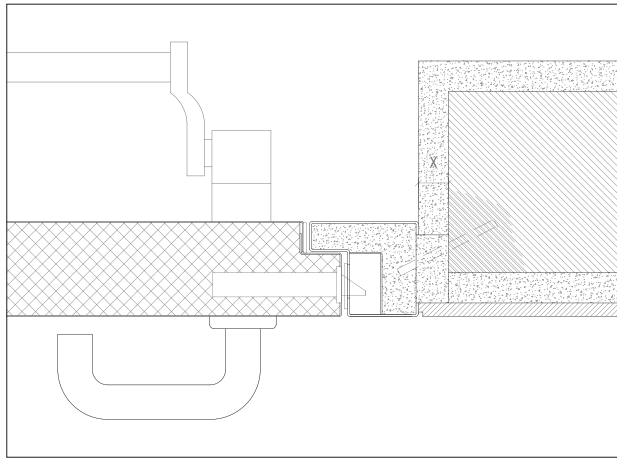
		PL1.60G	PL2.60G
<b>handle / anti-panic bar <sup>(4)</sup></b>	1 standard	anti-panic lever handle with drill finished in black (standard) or stainless steel.	
	2 standard	anti-panic bar with gear unit, tube, cover caps and arms finished in nylon black (standard) or stainless steel.	
		<sup>(4)</sup> alternatively, the door may be equipped with a pair of handles.	
<b>hydraulic door closer <sup>(5)</sup></b>	3 standard	hidden door closer.	hidden door closers with closing sequence selector.
		<sup>(5)</sup> with electromagnetic hold-open (optional).	
<b>lock / counter lock</b>	4 standard	anti-panic lock with 3 locking points.	anti-panic lock with 3 locking points + counter lock.
	5 H ≤ 2300	anti-panic lock with 1 locking point.	anti-panic lock with 1 locking point + counter lock.
<b>cylinder</b>	6 standard	1/2 cylinder (european profile).	
<b>hinges</b>	7 standard	3 hidden hinges.	3 hidden hinges (per leaf).
<b>others</b>	optional	intumescent grid.	

**Note:** option for coating available – maximum 4 mm | 69 mm (see details).



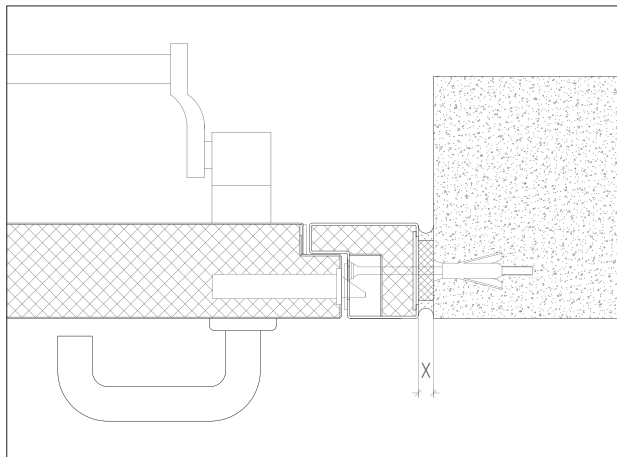
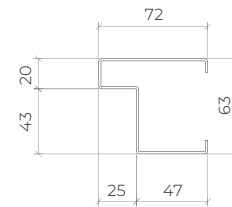
# details

## PAINT VERSION 63 mm



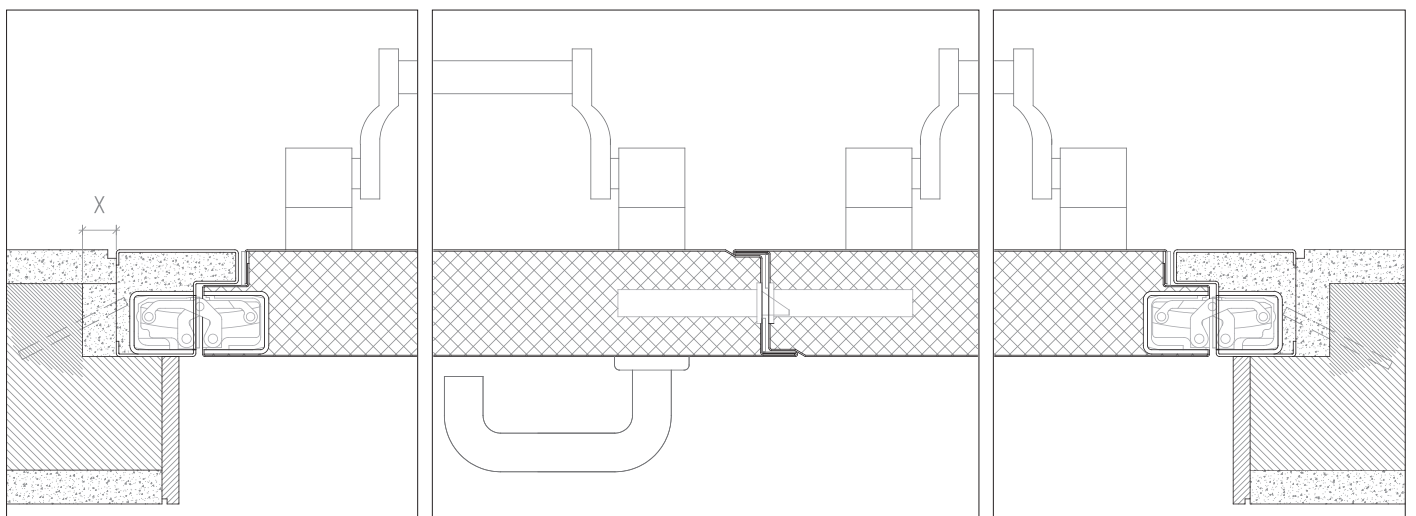
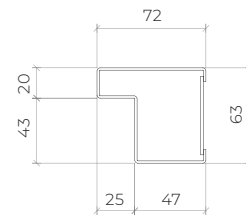
$X > 20$  mm (steel rod fixation)

standard frame | masonry wall mounting | steel rod fixation | plaster and wood finishes



$X \geq 5 - 10$  mm (for fixing with metal wall plugs according to wall type)

standard frame | concrete wall mounting | metal wall plugs fixation

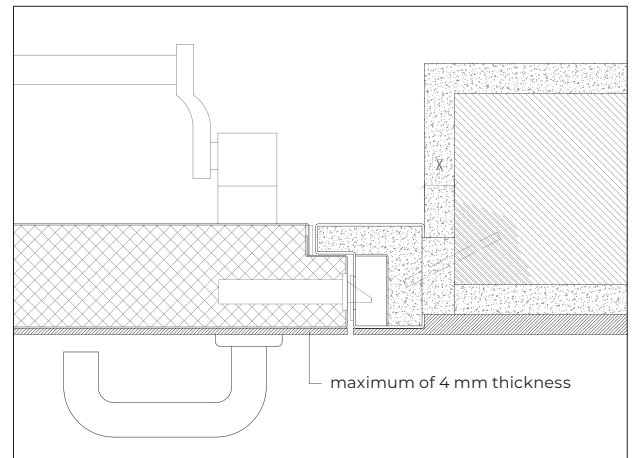
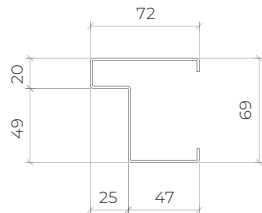


$X > 20$  mm (steel rod fixation)

standard frame | masonry wall mounting | steel rod fixation | plaster, iron and ceramic finishes

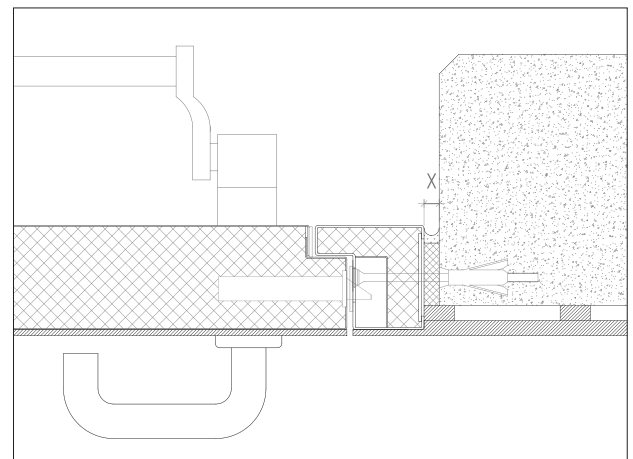
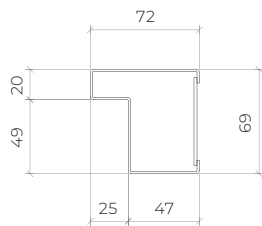
## LEAFED VERSION 69 mm

standard frame | masonry wall mounting | steel rod fixation | plaster and wood finishes

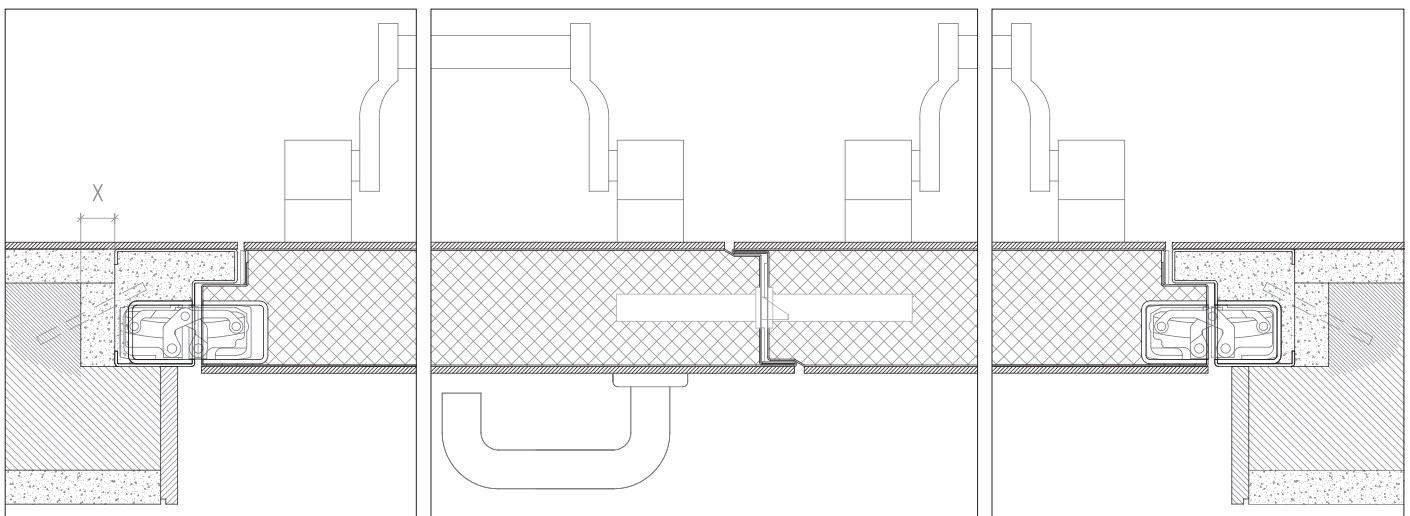


$X > 20$  mm (steel rod fixation)

standard frame | concrete wall mounting | metal wall plugs fixation | wood finishes



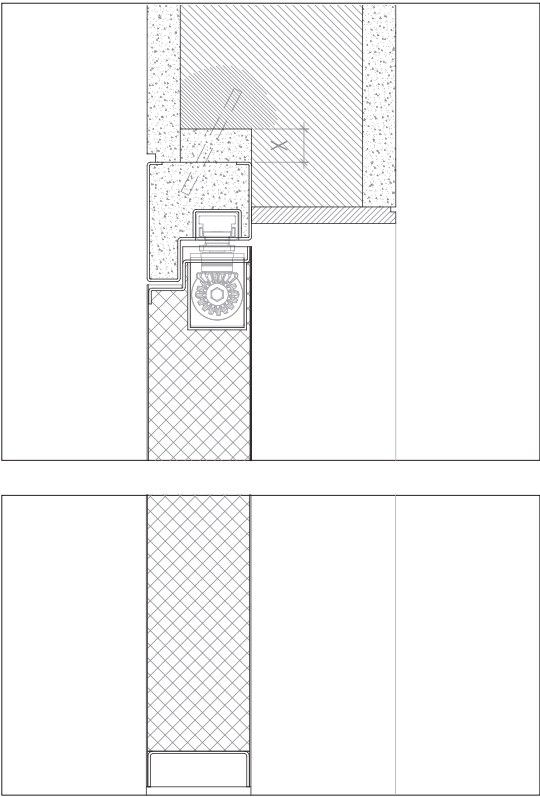
$X \geq 5 - 10$  mm (for fixing with metal wall plugs according to wall type)



standard frame | leaf finished with 4mm MDF | masonry wall mounting | steel rod fixation | plaster and wood finishes

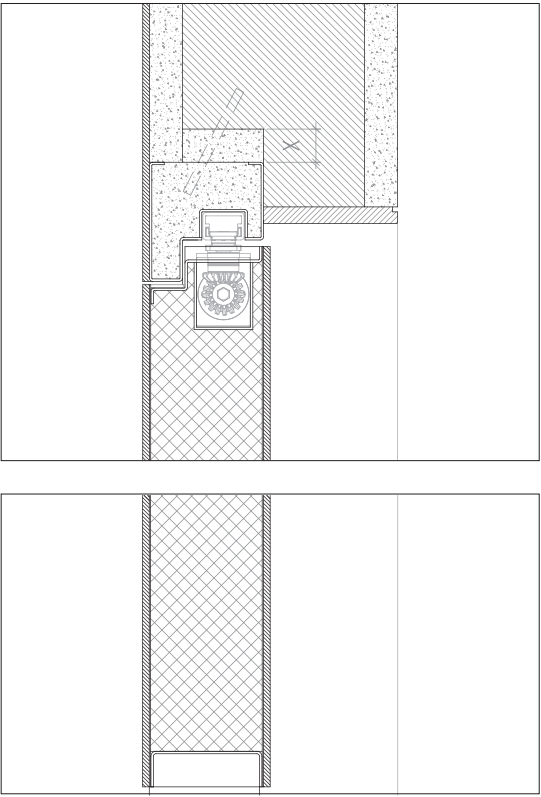
# details

## PAINT VERSION 63 mm



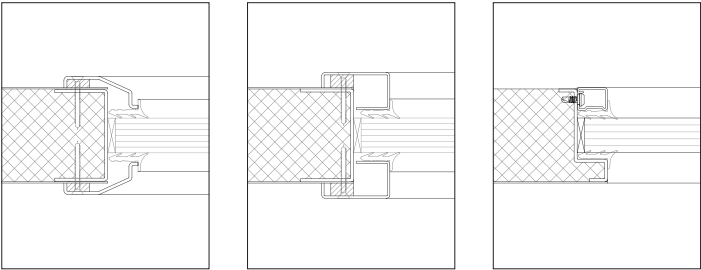
X ≥ 20 mm (steel rod fixation)  
standard frame | masonry wall mounting | steel rod fixation | plaster and wood finishes | hidden door closer

## LEAFED VERSION 69 mm



X ≥ 20 mm (steel rod fixation)  
standard frame | leaf finished with 4mm MDF | masonry wall mounting | steel rod fixation | plaster and wood finishes | hidden door closer

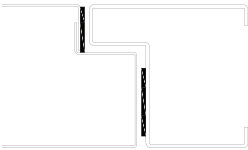
# types of vision panels



exclusive solution of the series

# technical details

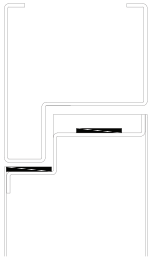
The use of intumescent joints ensures the necessary tightness against flames and hot gases.



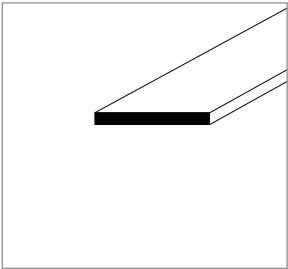
single leaf  
horizontal section



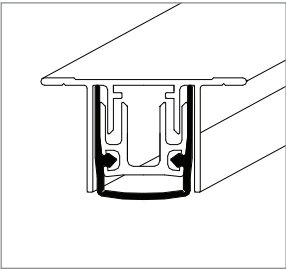
double leaf  
horizontal section



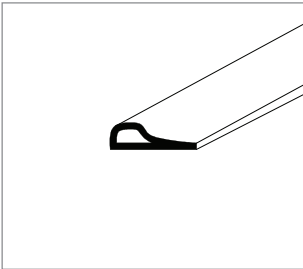
vertical section



intumescent seal



automatic seal



acoustic and intumescent seal



GROUP COMPANY



---

**TRIA SA.**

Parque Ind. Manuel Lourenço Ferreira - Lt.43  
3450 - 232 Mortágua, Portugal  
//+351 231 927 480 //geral@tria.pt  
**www.tria.pt**

VERS.**08**.24