



# P400W.1

P400 SERIES







**MODEL**

**P400W.1**  
single hinged leaf



MODEL

## P400W.1



## description

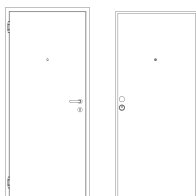
Hinged metal door with the frame made of bended electro-zinc coated steel profiles (2 mm thickness) welded to each other, containing an acoustic and thermal insulating rubber all over its periphery.

When the door is closed, the hinges side of the leaf will fully nest (from top to bottom) into the frame. The leaf is made of two electro-zinc coated steel panels (1.25 mm thickness) and it contains thermal and acoustic insulating materials. An automatic seal may be incorporated on leaf's bottom, if necessary.

The pivoting behavior of the door is ensured by two hinges of this series. The anti-intrusion security is ensured by an automatic high security lock with three locking points from WINKHAUS, equipped with titl-claws as well as an European profile cylinder with five uncopyable keys, protected by a security escutcheon that prevents access to the cylinder.

When the door closes the lock is automatically triggered. Optionally, it is possible to motorize the lock and associate it with an access control system.

## specification



model | typology

**P400W.1** | single hinged leaf | self

## classification achieved when tested

burglar resistance (EN 1628-30) <sup>(1)</sup>	RC 3 (side of the hinges)
FR integrity (EN 1634-1) <sup>(2)</sup>	E 15 / E 30 / E 45 / E 60
FR integrity and insulation (EN 1634-1) <sup>(2)</sup>	El <sub>2</sub> 15
acoustic (EN 20140-3)	35 dB

<sup>(1)</sup> classification according to standard EN 1627

<sup>(2)</sup> classification according to standard EN 13501-2

## dimensions (mm)

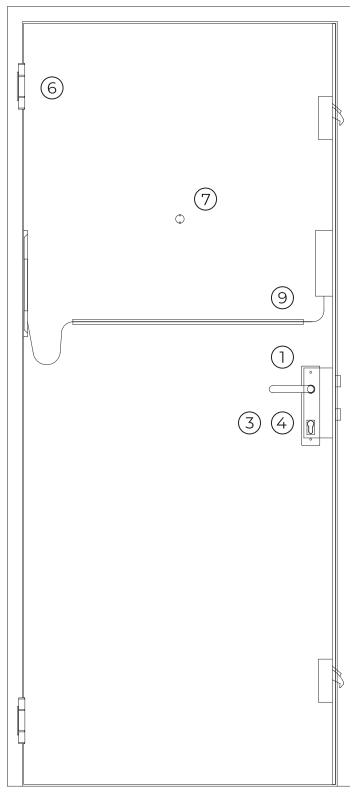
W x H (standard) <sup>(3)</sup>	800 / 900 x 2000 / 2100
W maximum	990
H maximum	2310
external frame (standard)	L + 112 x H + 62
other dimensions	upon request

<sup>(3)</sup> W x H = width x height = free passage

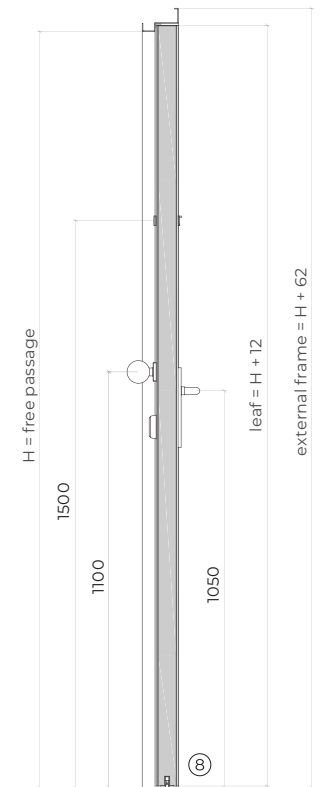
## construction

leaf thickness (mm)	58
leaf weight (kg/m <sup>2</sup> )	48
hinges (per leaf)	2
finishing (standard)	steel electrocoating paint / lacquering in standard RAL color <sup>(4)</sup>
finishing (optional)	wood veneer / mdf to paint / stainless steel

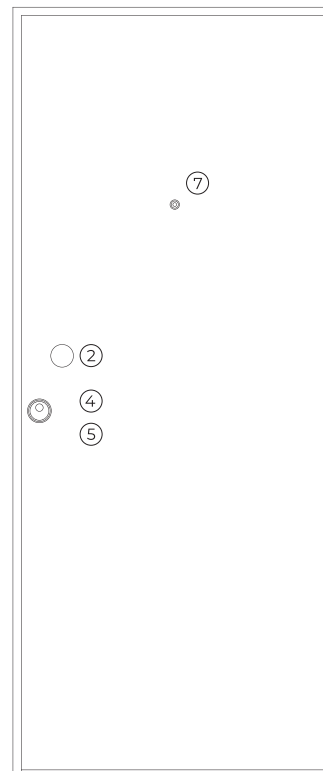
<sup>(4)</sup> standard RAL colors= 7035, 7038, 9005 e 9010



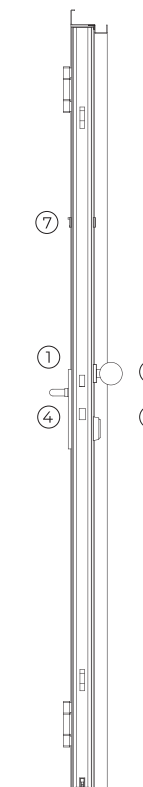
interior view



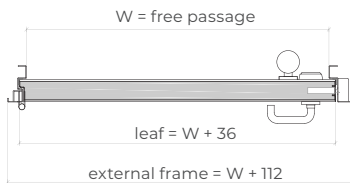
vertical view



exterior view



lock top view

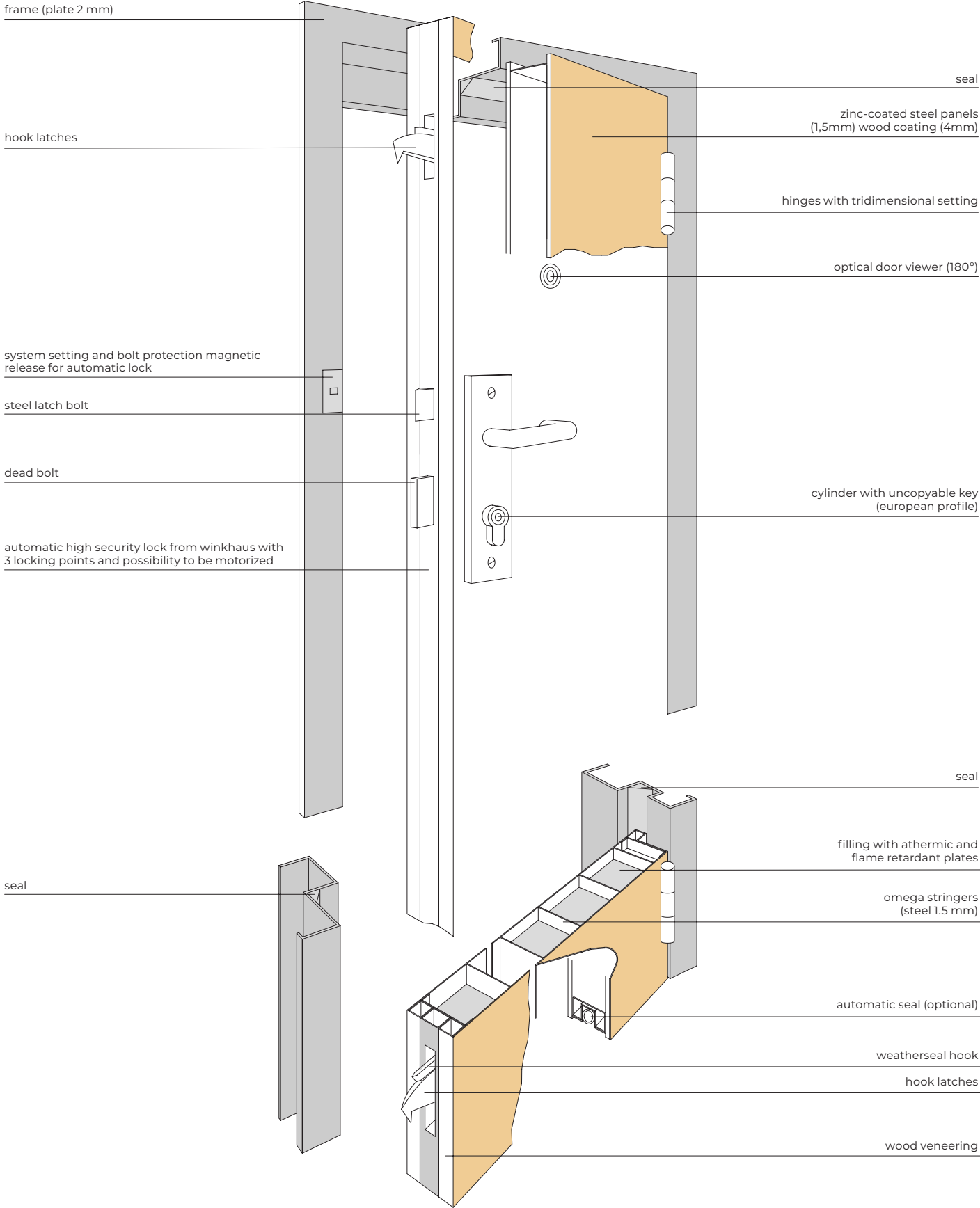


## accessories and hardware

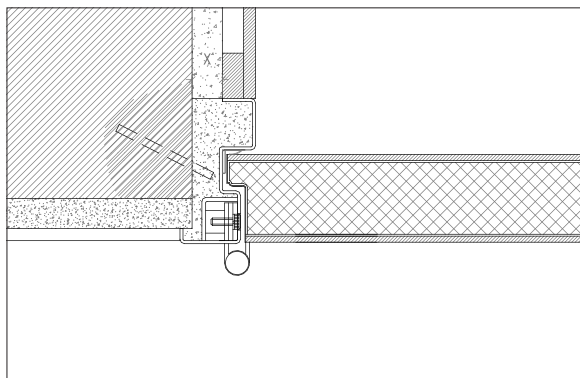
<b>handle</b>	1	standard	lever handle (interior).
	2	standard	fixed ball handle (exterior).
<b>lock</b>	3	standard	high security lock from WINKHAUS with 3 locking points equipped with hook latches and automatic closing system.
<b>cylinder</b>	4	standard	high security cylinder (european profile) with five uncopyable keys and a magnetic card for their reproduction.
		optional	cylinder with automatic open button (inside).
<b>escutcheon</b>	5	standard	security escutcheon.
<b>hinges</b>	6	standard	2 exclusive hinges of this series made of solid steel.
<b>others</b>	7	standard	optical door viewer (180°).
	8	optional	automatic seal.
	9	optional	motorization of the lock.

**Note:** there is the possibility of installing a door closer with articulated arm or sliding rail, as well as a magnetic contact embedded in the leaf to signal if the door is closed or opened.

# perspective

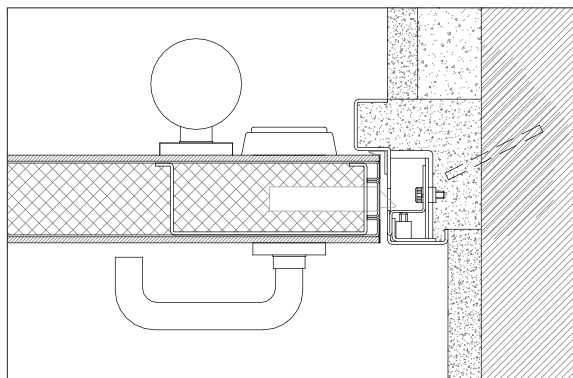


# details

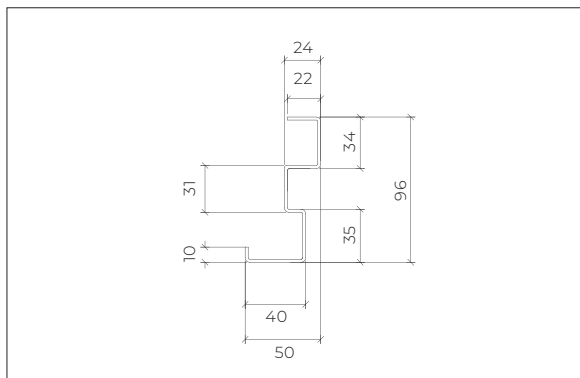


standard frame | masonry wall mounting | steel rod fixation | plaster and wood finishes

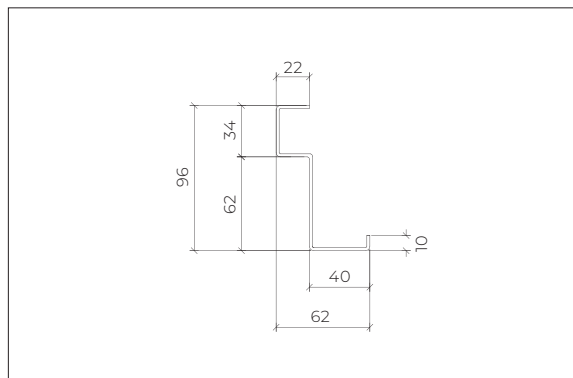
X > 20 mm (steel rod fixation)



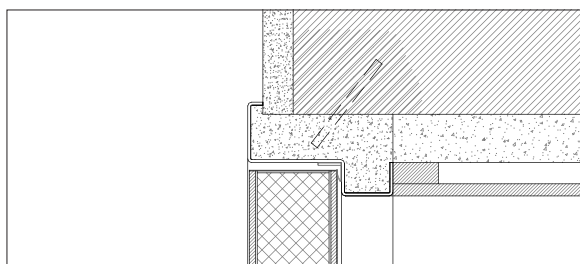
standard frame | masonry wall mounting | steel rod fixation | plaster finish.



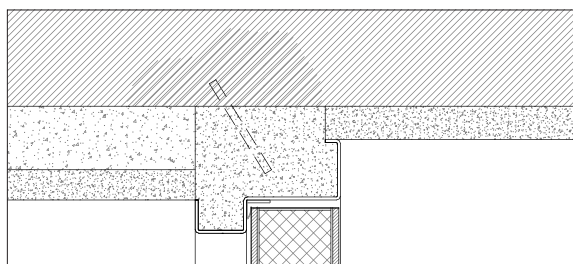
modified frame (hinges side)



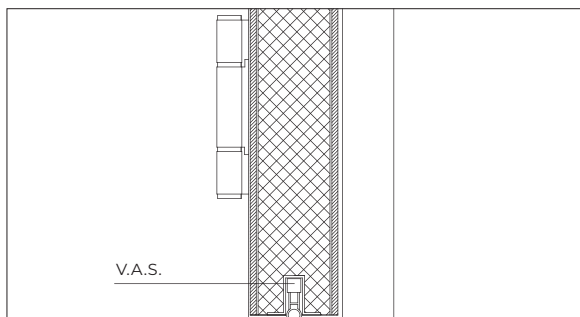
modified frame (lock side)



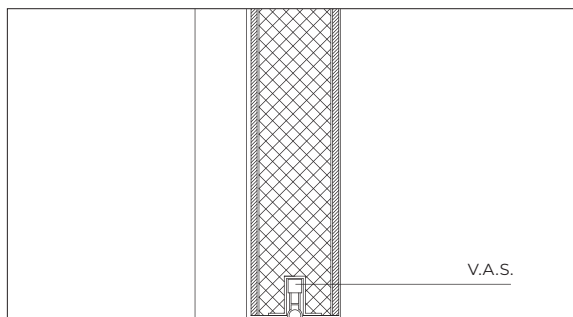
standard frame | masonry wall mounting | steel rod fixation | plaster and wood finishes



standard frame | masonry wall mounting | steel rod fixation | plaster and wood finishes



V.A.S.



V.A.S.



GROUP COMPANY



---

**TRIA SA.**

Parque Ind. Manuel Lourenço Ferreira - Lt.43  
3450 - 232 Mortágua, Portugal  
//+351 231 927 480 //geral@tria.pt

**[www.tria.pt](http://www.tria.pt)**

VERS.10.22A