



P400.1

P400 SERIES







MODEL

P400.1
single hinged leaf



MODEL

P400.1

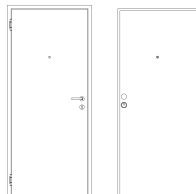
description

Hinged metal door with the frame made of bended electro-zinc coated steel profiles (2 mm thickness) welded to each other, containing an acoustic and thermal insulating rubber all over its periphery. When the door is closed, the hinges side of the leaf will fully nest (from top to bottom) into the frame.

The leaf is made of two electro-zinc coated steel panels (1.25 mm thickness) and it contains thermal and acoustic insulating materials. An automatic seal may be incorporated on leaf's bottom, if necessary. The pivoting behavior of the door is ensured by two hinges of this series.

The anti-intrusion security is ensured by a three-point high-security lock, equipped with anti-leverage claws and anti-saw dead bolts as well as an European profile cylinder with five uncopyable keys, protected by a security escutcheon that prevents access to the cylinder.

specification



model | typology

P400.1 | single hinged leaf

classification achieved when tested

burglar resistance (EN 1628-30) ⁽¹⁾	RC 3 (opposite side of the hinges)
FR Integrity (EN 1634-1) ⁽²⁾	E 15 / E 20 / E 30 / E 45 / E 60
FR Intergity and insulation (EN 1634-1) ⁽²⁾	EI 15 / EI 20 / EI 30
acoustics (EN 20140-3)	35 dB

⁽¹⁾ classification according to standard EN 1627

⁽²⁾ classification according to standard EN 13501-2

dimensions (mm)

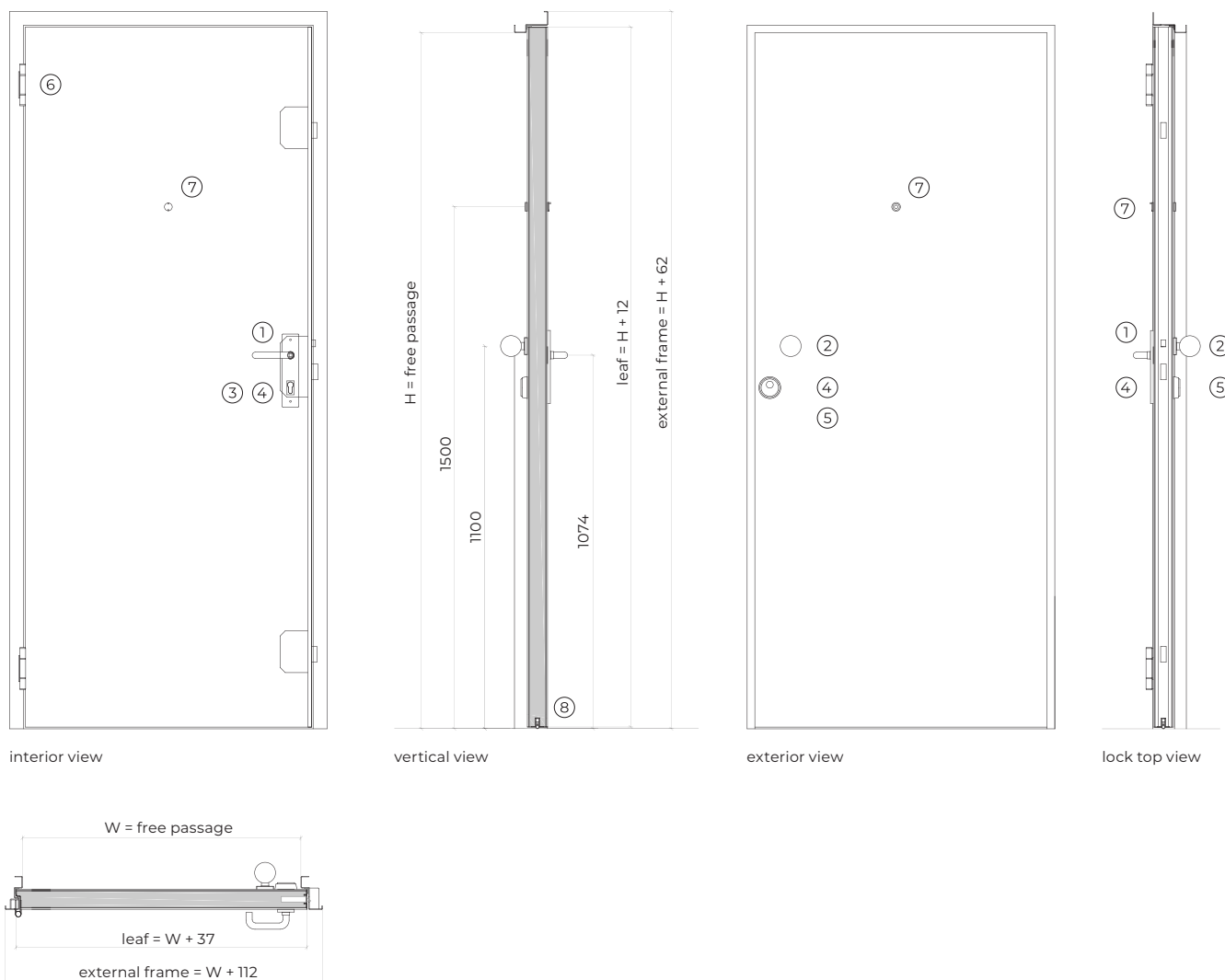
W x H (standard) ⁽³⁾	800 / 900 x 2000 / 2100
W maximum	990
H maximum	2310
external frame (standard)	L + 112 x H + 62
other dimensions	upon request

⁽³⁾ W x H = width x height = free passage

construction

leaf thickness (mm)	58
leaf weight (kg/m ²)	48
hinges (per leaf)	2
finishing (standard)	wood veneer
finishing (optional)	mdf to paint / steel electrocoating paint / lacquering in standard RAL color ⁽⁴⁾ / stainless steel

⁽⁴⁾ standard RAL colors= 7035, 7038, 9005 e 9010

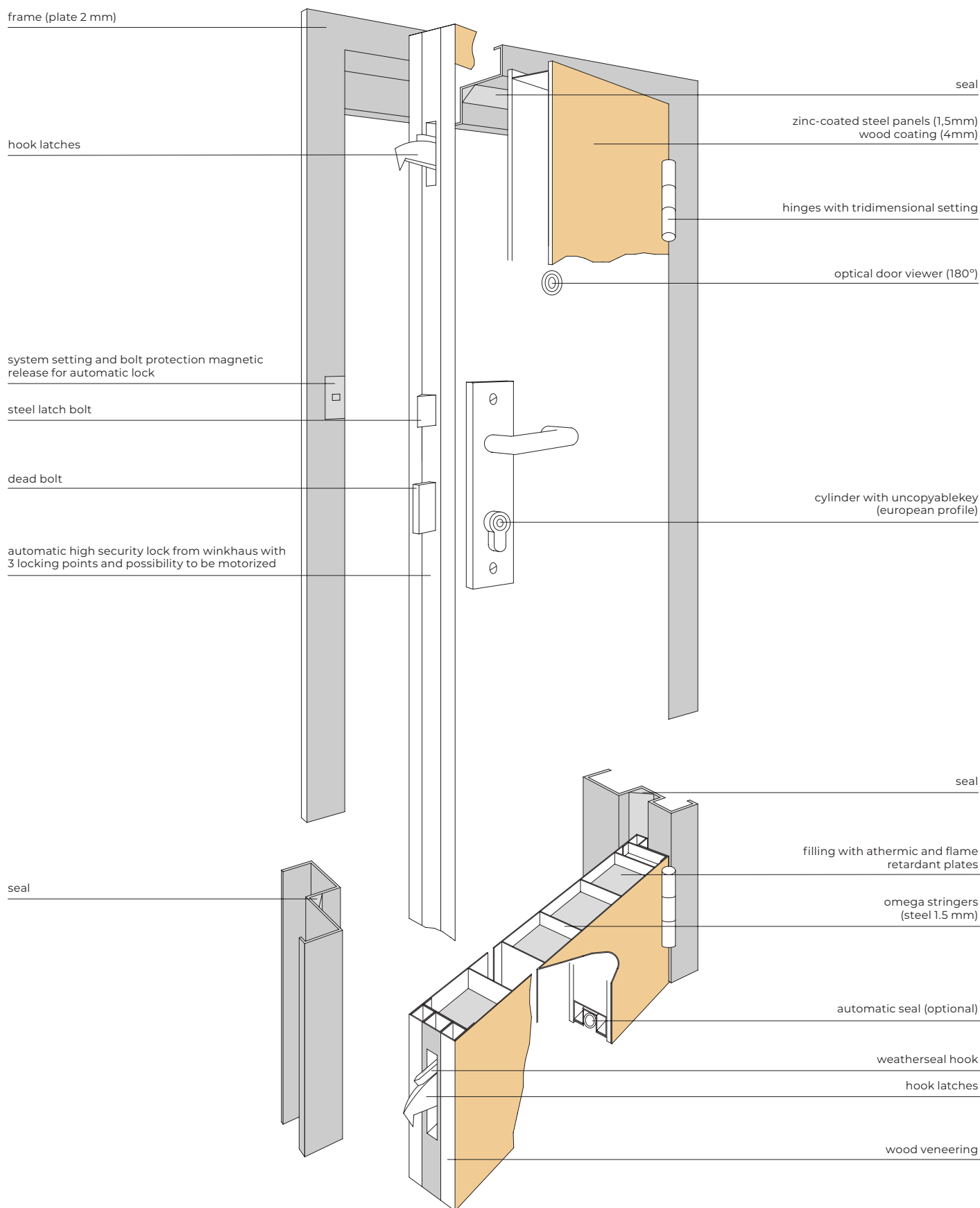


accessories and hardware

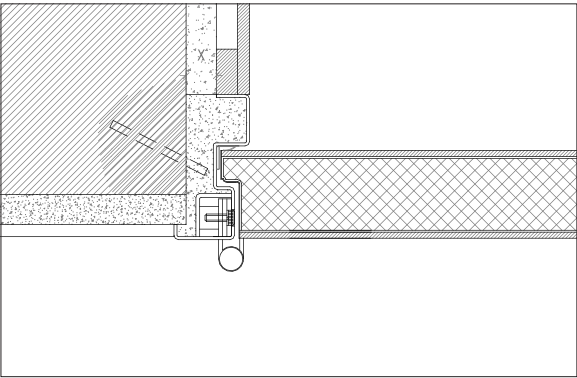
handle	1	standard	lever handle (interior).
	2	standard	fixed ball handle (exterior).
lock	3	standard	high security lock from Tesa / Assa Abloy with 3 locking points equipped with hook latches.
cylinder	4	standard	high security cylinder (european profile) with five uncopiable keys and a magnetic card for their reproduction.
escutcheon	5	standard	security escutcheon.
hinges	6	standard	2 exclusive hinges of this series.
others	7	standard	optical door viewer (180°).
	8	optional	automatic seal.

Note: there is the possibility of installing a door closer with articulated arm or sliding rail, as well as a magnetic contact embedded in the leaf to signal if the door is closed or opened.

details

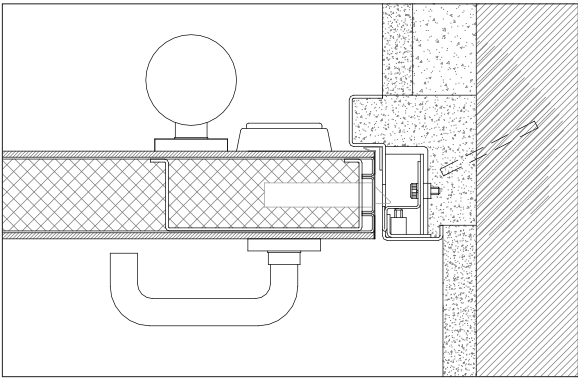


details

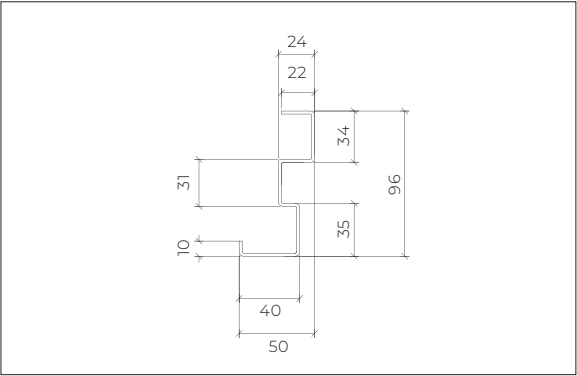


standard frame | masonry wall mounting | steel rod fixation | plaster and wood finishes

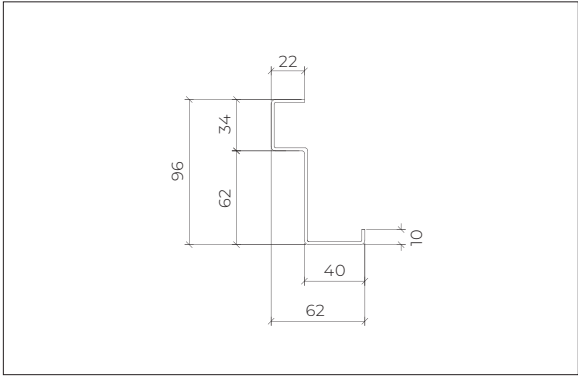
X > 20 mm (steel rod fixation)



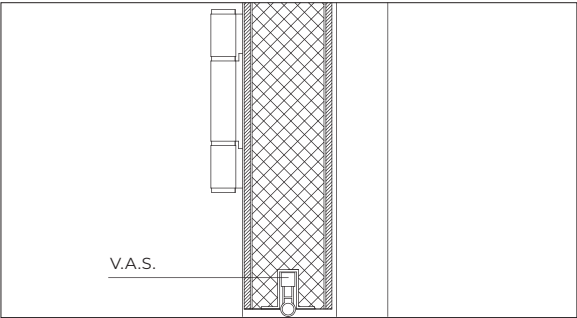
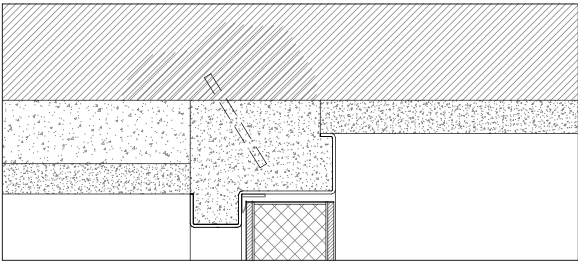
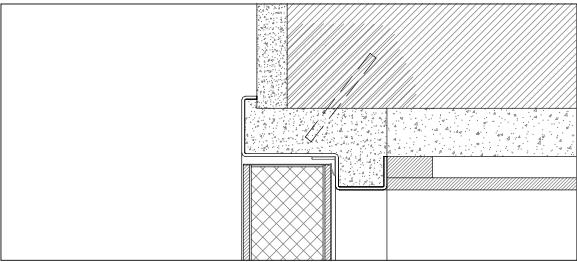
standard frame | masonry wall mounting | steel rod fixation | plaster finish.



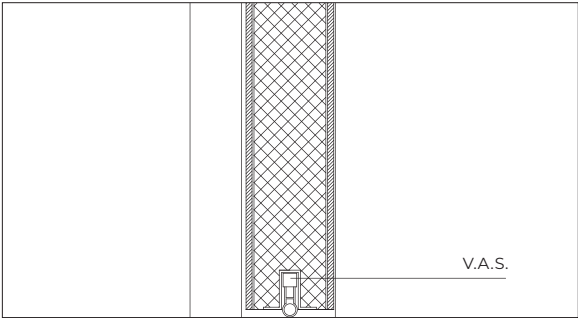
modified frame (hinges side)



modified frame (lock side)



standard frame | masonry wall mounting | steel rod fixation | plaster and wood finishes



standard frame | masonry wall mounting | steel rod fixation | plaster and wood finishes

GROUP COMPANY



TRIA SA.

Parque Ind. Manuel Lourenço Ferreira - Lt.43
3450 - 232 Mortágua, Portugal
//+351 231 927 480 //geral@tria.pt
www.tria.pt

VERS.**10.22A**