



P2.60EX

RF SERIES







MODEL

P2.60EX
double hinged leaf



MODEL

P2.60EX

description

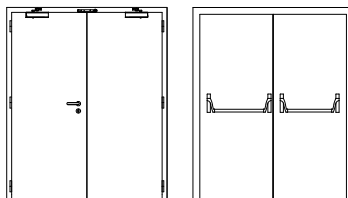
Hinged metal door with the frame made of bended electro-zinc coated steel profiles (1.5 mm thickness) welded to each other. On the hinges side are welded steel spikes which engage the leaf's top when the door is closed.

The leaf is made of two electro-zinc coated steel panels (0.8 mm thickness) and contains thermal insulating and acoustic materials according to the TRIA constructive system.

The high level sound attenuation is ensured by acoustic joints and can be increased adding a threshold. The leaf's bottom contains an automatic seal.

The pivoting function of the door is ensured by three exclusive hinges of this series. If desired, the hinges can be hidden by extending the panel of the leaf, on all three sides in order to maintain the symmetry of the door.

specification



model | typology

P2.60EX | double hinged leaf

classification achieved when tested

acoustic (EN 20140-3)	31 dB
air permeability (EN 1026)	3
watertightness (EN 1027)	6A
wind resistance (EN 12211)	C2
operation forces (EN 12046-2)	2
torsion resistance (EN 984)	4
thermal coef. (EN ISO 10077-1)	1.66 W/(m ² .°C)

dimensions (mm)

W x H (standard) ⁽²⁾	1400 / 1600 / 1800 X 2025 / 2100
W maximum	2520
H maximum	2910
external frame (standard)other	L + 150 x H + 75
dimensions	upon request

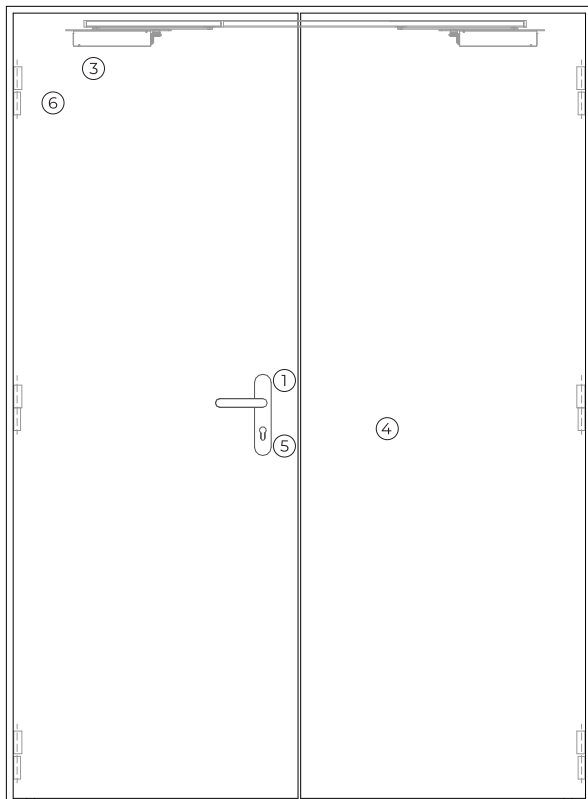
⁽²⁾ W x H = width x height = free passage

construction

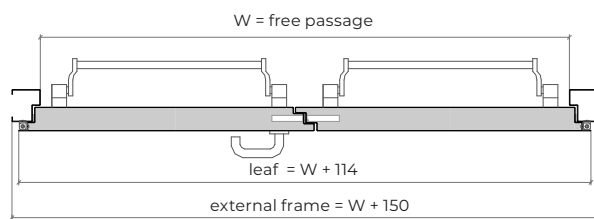
leaf thickness (mm)	62
leaf weight (kg / m ²)	28.5
hinges (per leaf)	3
finishing (standard)	electro-zinc coated steel for painting / lacquering in standard RAL color ⁽³⁾
finishing (optional)	stainless / wood veneer

⁽³⁾ standard RAL colors = 7035, 7038, 9005 e 9010

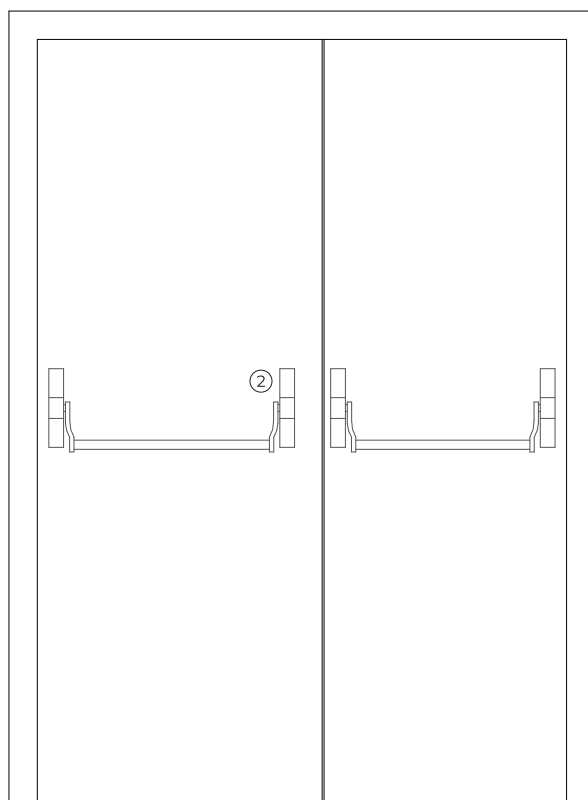
P2.60EX



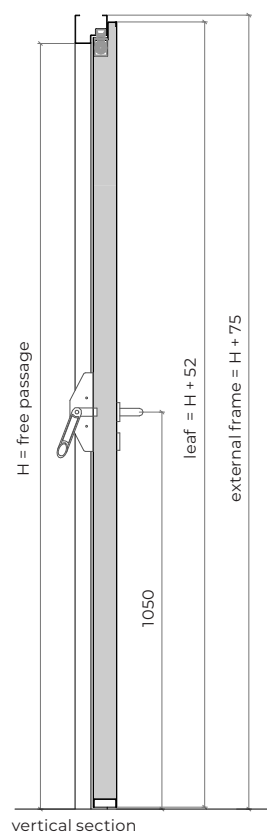
exterior view



horizontal section

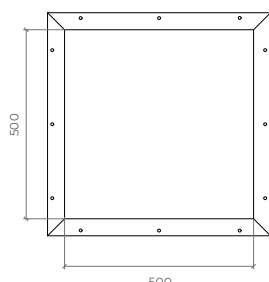


interior view

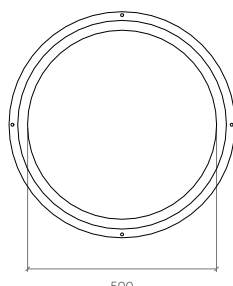


vertical section

optionals



square vision panel



round vision panel

accessories and hardware

handle / anti-panic bar ⁽⁴⁾

- | | | |
|---|----------|--|
| 1 | standard | anti-panic lever handle finished in black or stainless steel |
| 2 | standard | anti-panic bar with gear unit, tube, cover caps and arms.
(black - black / black - red / black - green / silver - silver / stainless steel - stainless steel) |

⁽⁴⁾ alternatively, the door may be equipped with a pair of handles.

hydraulic door closer ⁽⁵⁾

- | | | | |
|---|----------|-----------------------------|---|
| 3 | standard | concealed door closer. | concealed door closers with closing sequence selector included. |
| | optional | door closer with link arm. | door closers with link arms + closing sequence selector. |
| | optional | door closer with guide rail | door closers with guide rail + closing sequence selector. |

⁽⁵⁾ with electromagnetic hold-open (optional).

lock / counter lock

- | | | | |
|---|------------------|--|---|
| 4 | standard | anti-panic lock with 1 locking point. | anti-panic lock with 1 locking point + counter lock. |
| | other dimensions | anti-panic lock with 3 locking points. | anti-panic lock with 3 locking points + counter lock. |

cylinder

- | | | |
|---|----------|--|
| 5 | standard | cylinder (european profile).
1/2 cylinder (european profile). |
|---|----------|--|

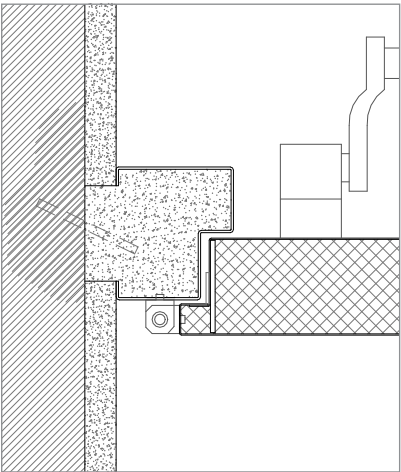
hinges

- | | | | |
|---|----------|--|---|
| 6 | standard | 3 exclusive hinges of this series, hidden. | 3 exclusive hinges of this series, hidden (per leaf). |
|---|----------|--|---|

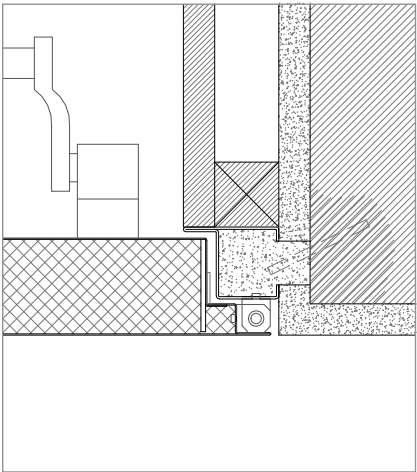
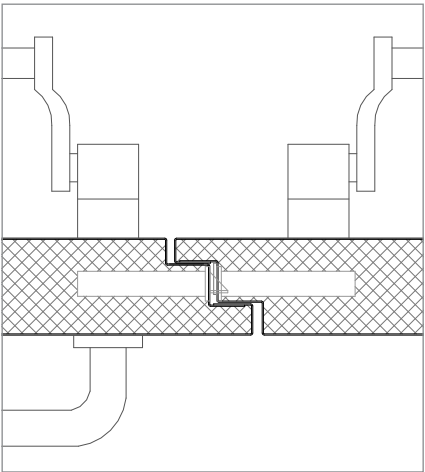
others

- | | | |
|--|-----------|--|
| | optionals | square, rectangular and round vision panel, intumescent grill. |
|--|-----------|--|

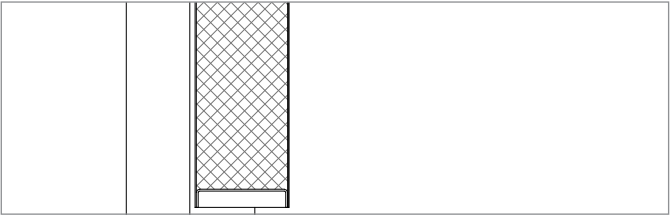
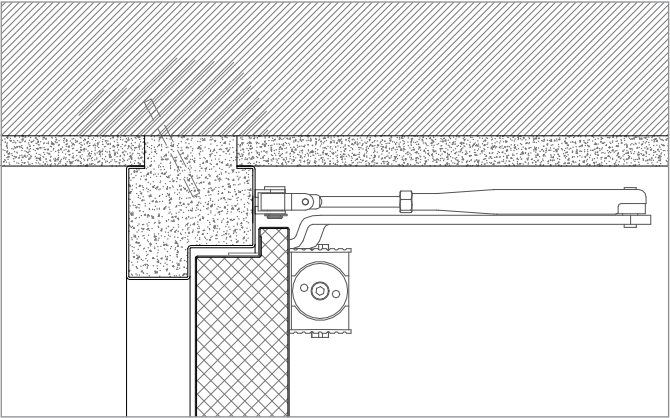
details



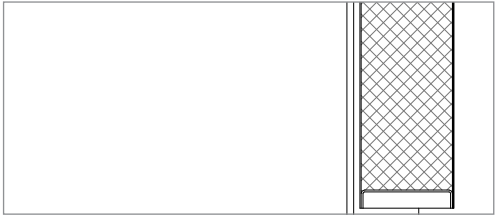
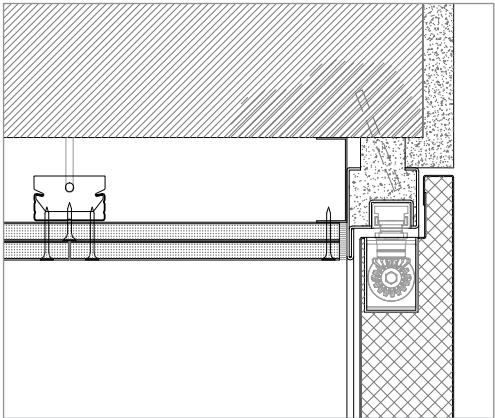
standard leaf



hidden hinge leaf



standard frame | masonry wall mounting | steel rod fixation | plaster finish | door closer with a link arm.

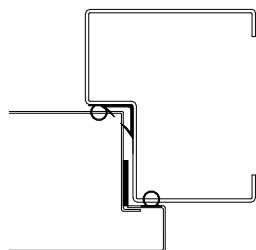


modified frame ⁽⁶⁾ | masonry wall mounting | steel rod fixation | plaster finish | hidden door closer

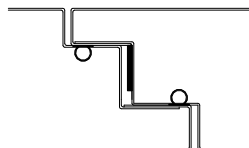
technical details

The use of acoustic and intumescent seals ensures a high level of sound attenuation and the necessary tightness against flames and hot gases. The leaf's bottom contains an automatic seal.

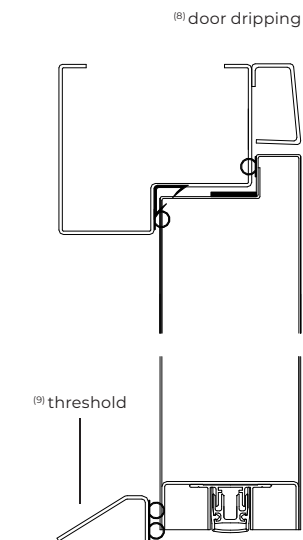
note: if the door is placed in the exterior a threshold should be used. If necessary, can be provided a threshold ⁽⁸⁾, as well as a weather bar ⁽⁹⁾.



single leaf
horizontal section

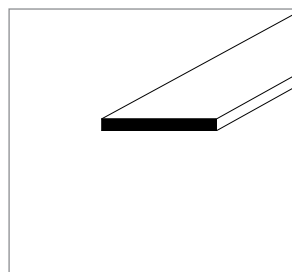


double leaf
horizontal section

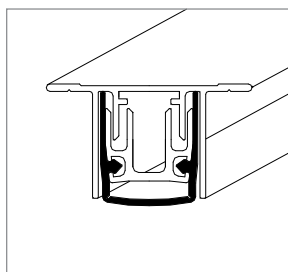


vertical section

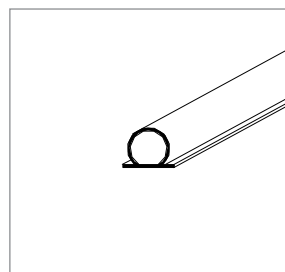
details



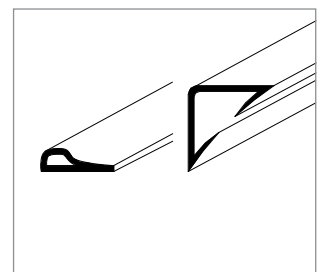
intumescent seal



automatic seal (v.a.s.)

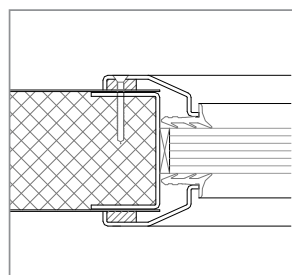


acoustic seal

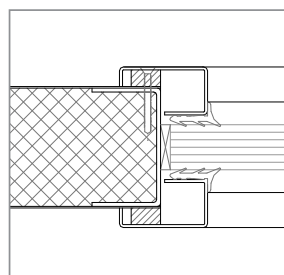


acoustic and intumescent seal

types of vision panels



round vision panel



rectangular vision panel

GROUP COMPANY



TRIA SA.

Parque Ind. Manuel Lourenço Ferreira - Lt.43
3450 - 232 Mortágua, Portugal
//+351 231 927 480 //geral@tria.pt
www.tria.pt

VERS.**10.22A**