



P1.AD

RF SERIES







MODEL

P1.AD
single hinged leaf



MODEL

P1.AD

description

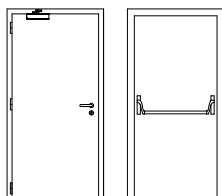
Hinged metal door with the frame made of bended electro-zinc coated steel profiles (1.5 mm thickness) welded to each other. On the hinges side are welded steel spikes which engage the leaf's top when the door is closed.

The leaf is made of two electro-zinc coated steel panels (0.8 mm thickness) and contains thermal insulating materials according to the TRIA constructive system.

Side and top fixed panels can be attached, as long as its composition is similar to the leaf. The high level sound attenuation is ensured by acoustic joints and can be increased adding a threshold. The leaf's bottom contains an automatic seal.

The pivoting function of the door is ensured by three exclusive hinges of this series.

specification



model | typology

P1.AD | single hinged leaf

classification achieved when tested

FR Integrity (EN 1634-1) ⁽¹⁾	E 45
FR Integrity and insulation (EN 1634-1) ⁽¹⁾	EL ₂ 30
durability (EN 1191)	–

⁽¹⁾ classification according to standard 13501-2

dimensions (mm)

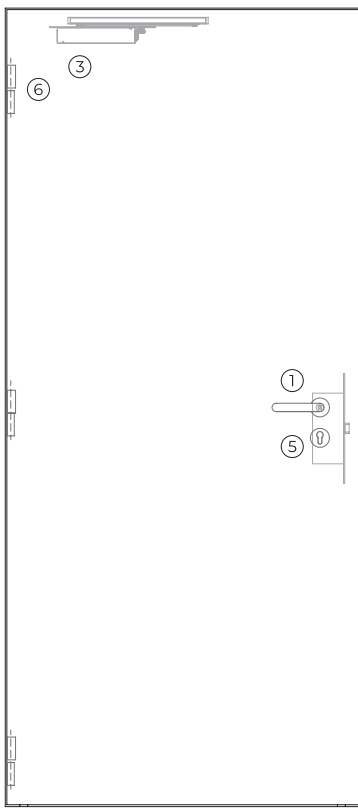
W x H (standard) ⁽²⁾	800 / 900 x 2000 / 2100
W maximum	1095
H maximum	2415
external frame (standard)	L + 122 x H + 61
other dimensions	upon request

⁽²⁾ W x H = width x height = free passage

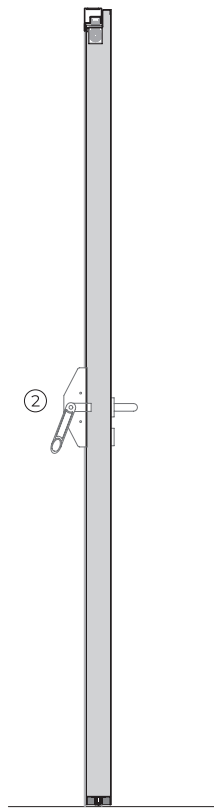
construction

leaf thickness (mm)	66
leaf weight (kg / m ²)	28.5
hinges (per leaf)	3
standard vision panel (mm)	Ø 300 / 300 x 400
finishing (standard)	electro-zinc coated steel for painting/ lacquering in standard RAL color ⁽³⁾
finishing (optional)	stainless/ wood veneer

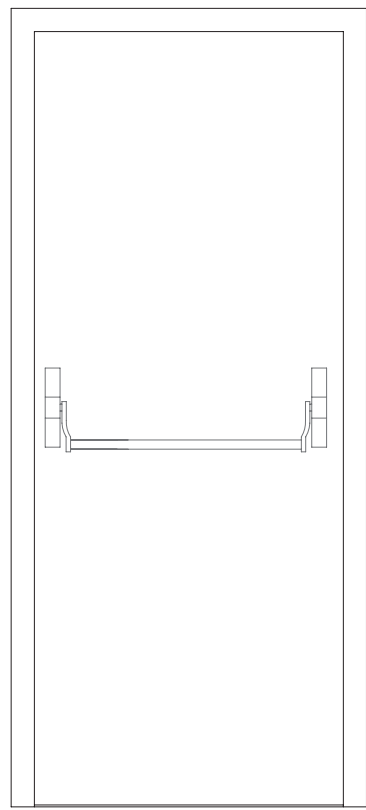
⁽³⁾ standard RAL colors= 7035, 7038, 9005 e 9010.



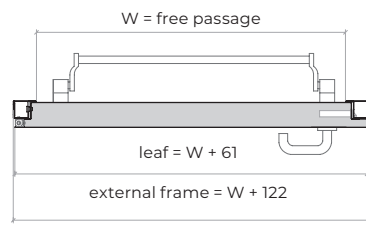
exterior view



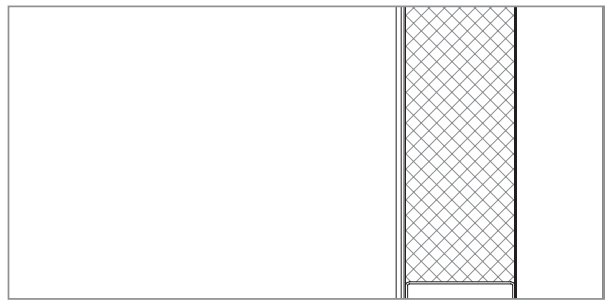
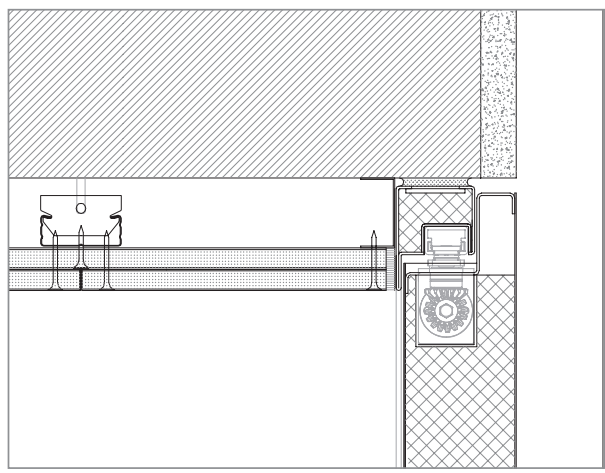
vertical section



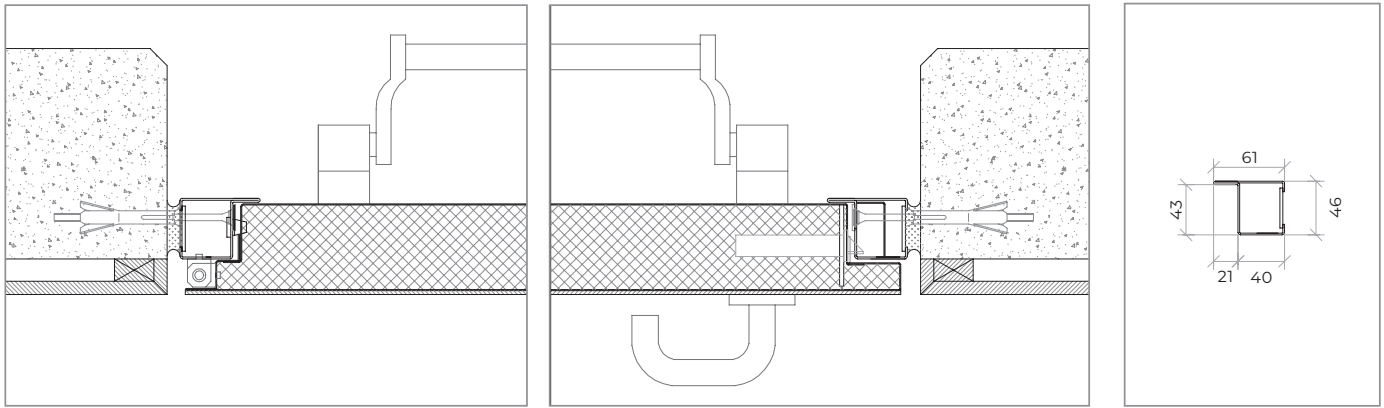
interior view



horizontal section



modified frame | concrete wall mounting | metal wall plugs fixation | plaster finishes | hidden door closer



X ≥ 5-10 mm (for fixing with metal plugs, depending on the type of wall).

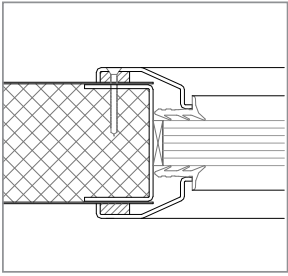
modified frame | hidden hinge leaf | concrete wall mounting | metal wall plugs fixation

accessories and hardware

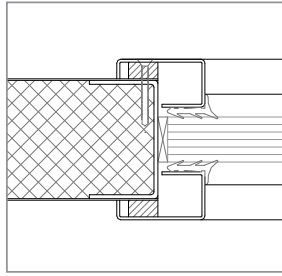
STANDARD HINGES

handle / anti-panic bar ⁽⁴⁾	1	standard	anti-panic lever handle finished in black or stainless steel.
	2	standard	anti-panic bar with gear unit, tube, cover caps and arms. (black - black / black - red / black - green / silver - silver / stainless steel - stainless steel)
hidraulic door closer ⁽⁵⁾			⁽¹⁾ alternatively, the door may be equipped with a pair of handles.
	3	standard	hidden door closer. ⁽⁵⁾ with electromagnetic hold-open (optional).
lock / counter lock	4	standard	anti-panic lock with 1 locking point.
		other dimensions	anti-panic lock with 3 locking points.
cylinder	5	standard	cylinder (european profile). 1/2 cylinder european profile (with anti-panic accesories).
hinges	6	standard	3 exclusive hinges of this series.
others		optionals	square, rectangular and round vision panel, intumescent grill, automatic threshold sealing (V.A.S.), access control, pass cables.

types of vision panels



round vision panel



rectangular vision panel

GROUP COMPANY



TRIA SA.

Parque Ind. Manuel Lourenço Ferreira - Lt.43
3450 - 232 Mortágua, Portugal
//+351 231 927 480 //geral@tria.pt
www.tria.pt

VERS.10.22A