



P1.60G & P2.60G

RF SERIES







MODELS

P1.60G
single hinged leaf

P2.60G
double hinged leaf



MODELS

P1.60G

P2.60G

description

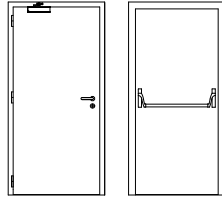
Hinged metal door with the frame made of bended electro-zinc coated steel profiles (1.5 mm thickness) welded to each other. On the hinges side are welded steel spikes which engage the leaf's top when the door is closed.

The leaf is made of two electro-zinc coated steel panels (0.8 mm thickness) and contains thermal insulating materials according to the TRIA constructive system.

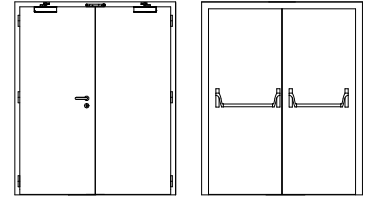
The use of intumescent joints ensures the necessary tightness against flames and hot gases.

The pivoting function of the door is ensured by three exclusive hinges of this series. If desired, the hinges can be hidden by extending the panel of the leaf, on all three sides in order to maintain the symmetry of the door. If necessary, its possible to incorporate an intumescent grid in the leaf.

specification



P1.60G | single hinged leaf



P2.60G | double hinged leaf

model | typology

classification achieved when tested

FR Integrity (EN 1634-1) ⁽¹⁾

E 30 / E 60

E 30 / E 60

FR Integrity and insulation (EN 1634-1) ⁽¹⁾

El₂ 30 / El₂ 60

El₂ 30 / El₂ 60

resistance to repeated opening and closing maneuvers (EN 1191)

C5

C5

⁽¹⁾ classification according to standard 13501-2

dimensions (mm)

W x H (standard) ⁽²⁾

800 / 900 x 2000 / 2100

1400 / 1600 / 1800 x 2000 / 2100

W maximum

1210

2415

H maximum

2935

2935

external frame (standard)

W + 150 x H + 75

W + 150 x H + 75

other dimensions

upon request

upon request

⁽²⁾ W x H = width x height = free passage

construction

leaf thickness (mm)

62

62

leaf weight (kg / m²)

28.5

28.5

hinges (per leaf)

3

3

standard vision panel (mm)

Ø 300 / 300 x 400 / 400 x 1500
/ 500 x 1500

Ø 300 / 300 x 400 / 400 x 1500
/ 500 x 1500

finishing (standard)

electro-zinc coated steel for
painting / lacquering in standard
RAL color ⁽³⁾

electro-zinc coated steel for
painting / lacquering in standard
RAL color ⁽³⁾

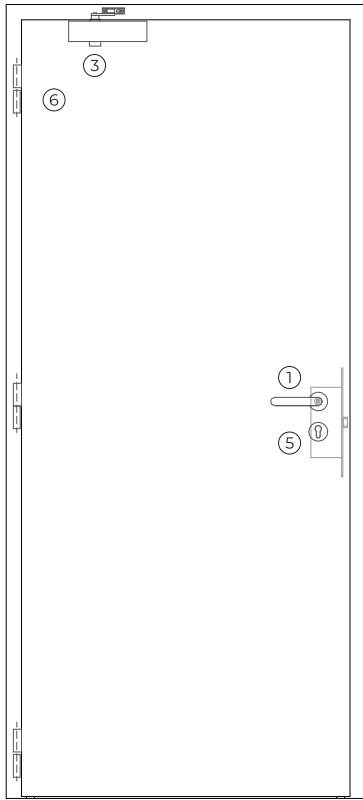
finishing (optional)

stainless/ wood veneer

stainless/ wood veneer

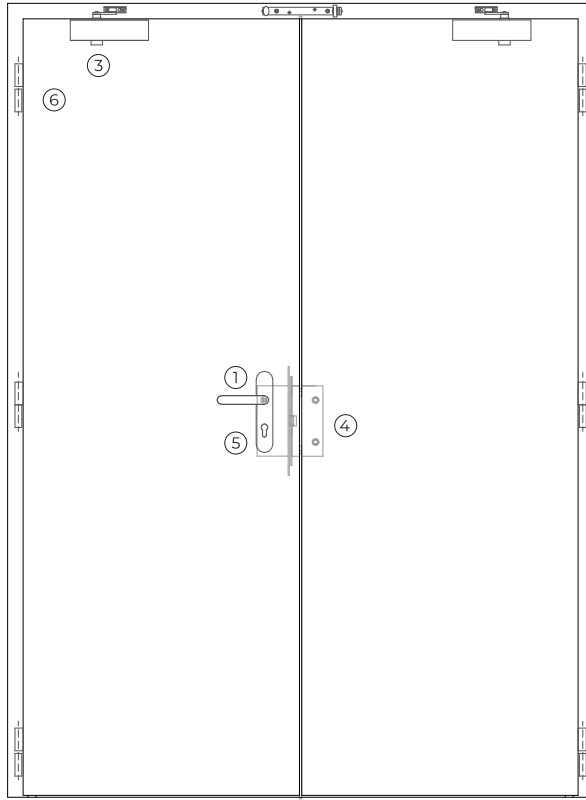
⁽³⁾ standard RAL colors = 7035, 7038, 9005 e 9010

P1.60G



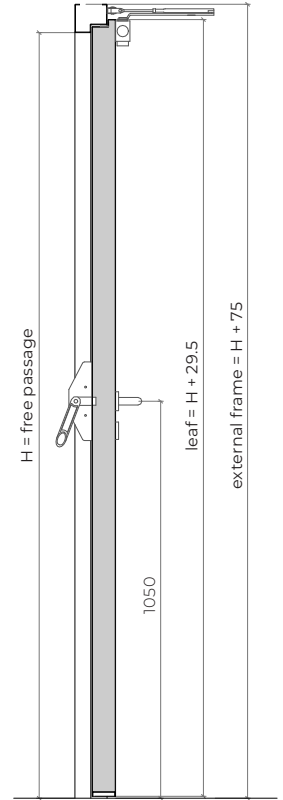
exterior view

P2.60G

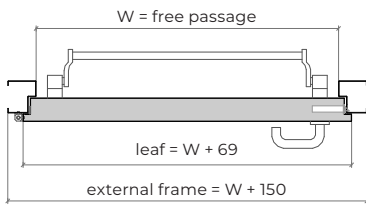


exterior view

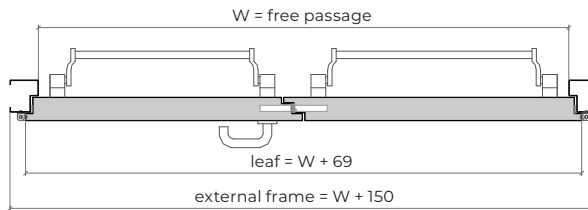
STANDARD HINGES



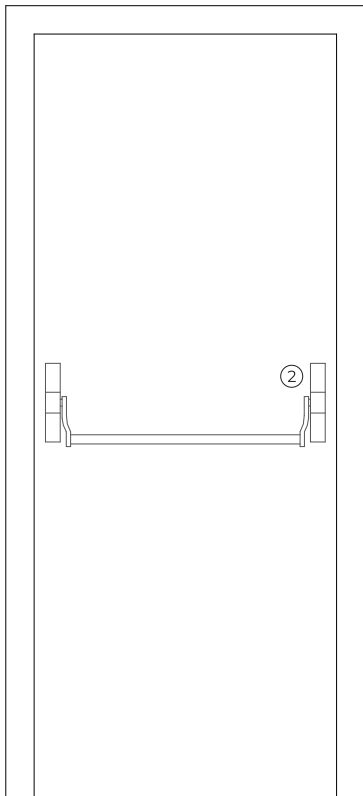
vertical section



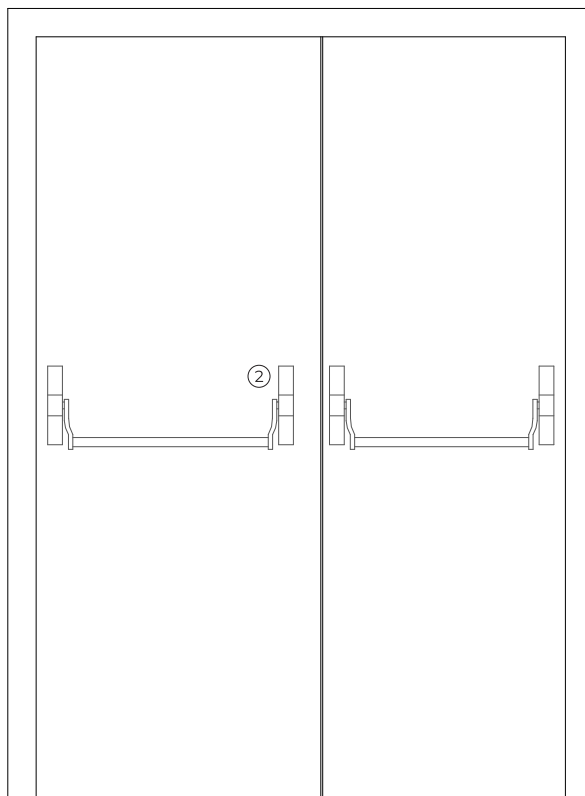
horizontal section



horizontal section

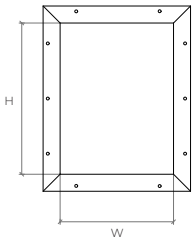


interior view

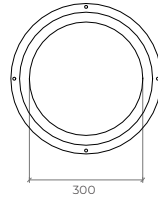


interior view

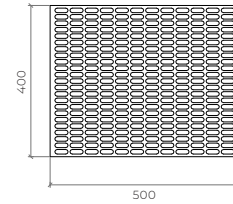
optionals



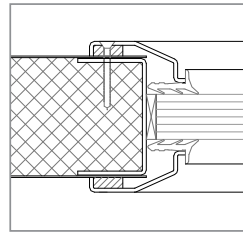
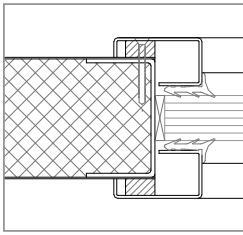
rectangular vision panel
HxW (400x300/1500x400/1500x500)



round vision panel



intumescent grill



accessories and hardware

STANDARD HINGES

P1.60G

P2.60G

handle / anti-panic bar ⁽⁴⁾

- | | | |
|---|----------|---|
| 1 | standard | anti-panic lever handle finished in black or stainless steel. |
| 2 | standard | anti-panic bar with gear unit, tube, cover caps and arms. |

⁽⁴⁾ alternatively, the door may be equipped with a pair of handles.

hidraulic door closer ⁽⁵⁾

- | | | | |
|---|----------|-------------------------------|--|
| 3 | standard | door closer with an link arm. | door closers with link arms + closing sequence selector. |
| | optional | door closer with guide rail. | door closers with guide rail + closing sequence selector |
| | optional | concealed door closer. | concealed door closers with closing sequence selector |

⁽⁵⁾ with electromagnetic hold-open (optional).

lock / counter lock

- | | | | |
|---|------------------|--|---|
| 4 | standard | anti-panic lock with 1 locking point. | anti-panic lock with 1 locking point + counter lock. |
| | other dimensions | anti-panic lock with 3 locking points. | anti-panic lock with 3 locking points + counter lock. |

cylinder

- | | | |
|---|----------|---|
| 5 | standard | cylinder (european profile).
1/2 cylinder (european profile) with anti-panic accesories. |
|---|----------|---|

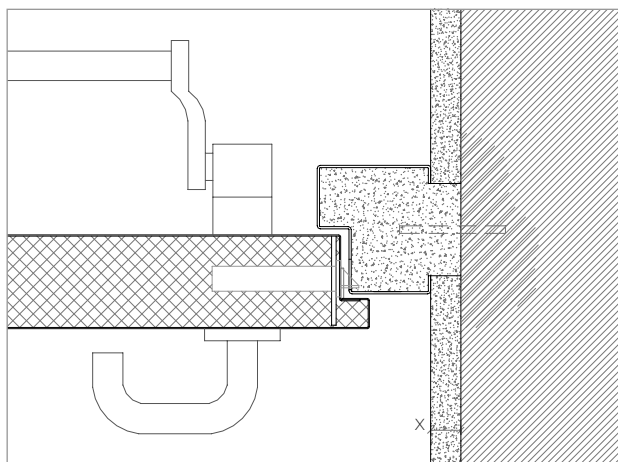
hinges

- | | | | |
|---|----------|-----------------------------------|--|
| 6 | standard | 3 exclusive hinges of this series | 3 exclusive hinges of this series (per leaf) |
|---|----------|-----------------------------------|--|

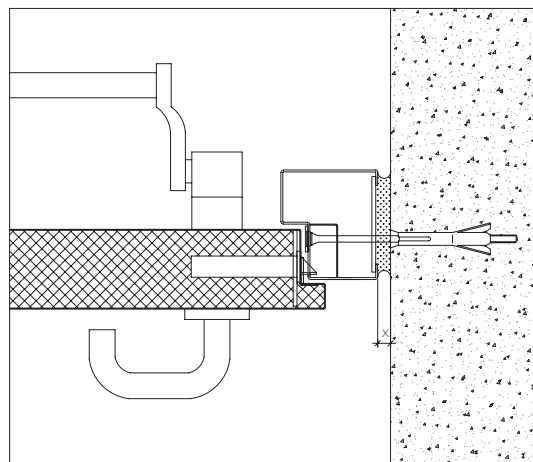
others

- | | |
|-----------|---|
| optionals | square, rectangular and round vision panel, intumescent grill, automatic threshold sealing (V.A.S.), access control, pass cables. |
|-----------|---|

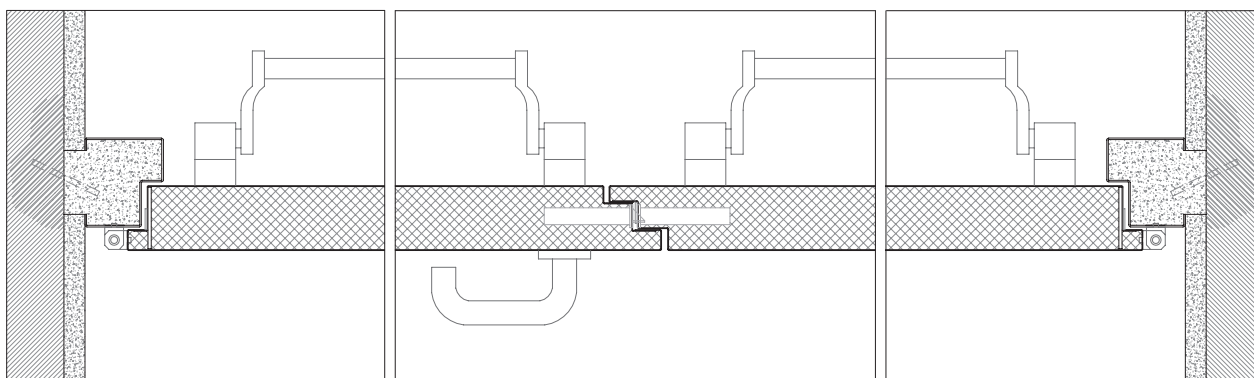
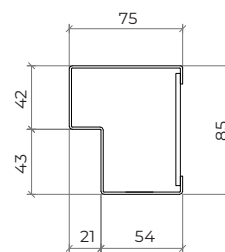
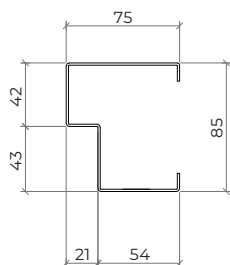
details



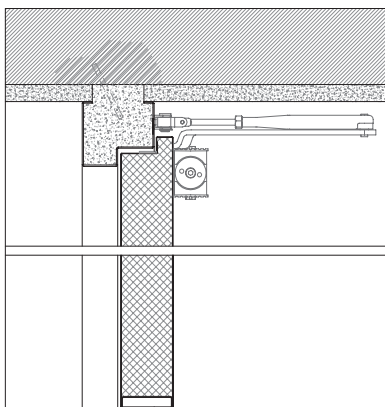
$X \geq 20$ mm (steel rod fixation)
standard frame | masonry wall mounting | steel rod
fixation | plaster finish



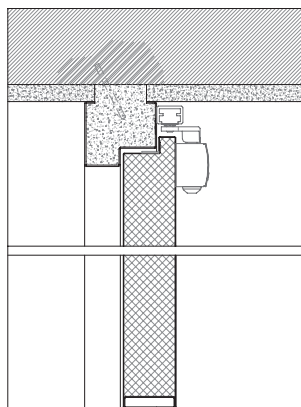
$X \geq 5-10$ mm (for fixing with metal wall plugs according to wall type)
standard frame | standard leaf | concrete wall
mounting | metal wall plugs fixation



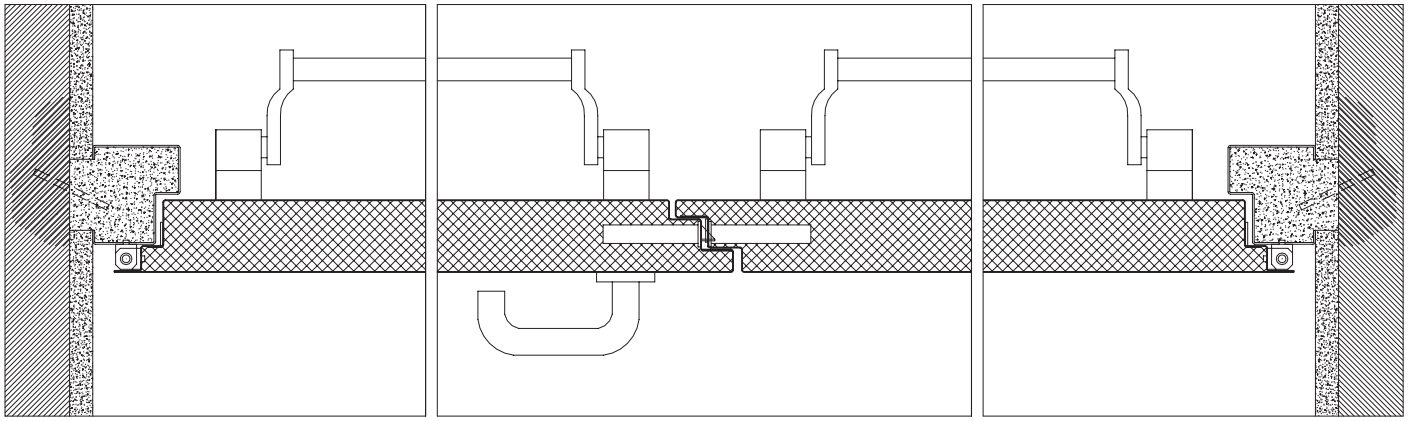
standard leaf



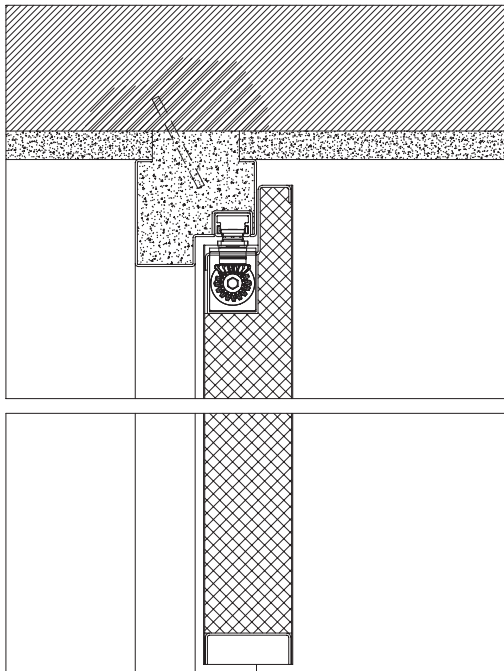
standard frame | masonry wall mounting |
steel rod fixation | plaster finish | door closer
with a link arm.



standard frame | masonry wall
mounting | steel rod fixation |
plaster finish | door closer with a
sliding guide.



standard frame | hidden hinge leaf | masonry wall mounting | steel rod fixation | plaster finish

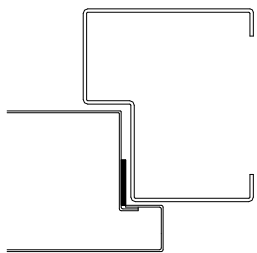


standard frame | hidden hinge | masonry wall mounting | steel rod fixation | plaster finish | hidden door closer

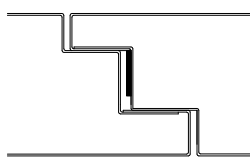
technical details

P1.60G / P2.60G MODELS

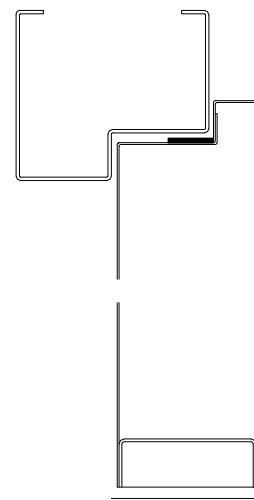
The use of intumescent joints ensures the necessary tightness against flames and hot gases.



single leaf
horizontal section



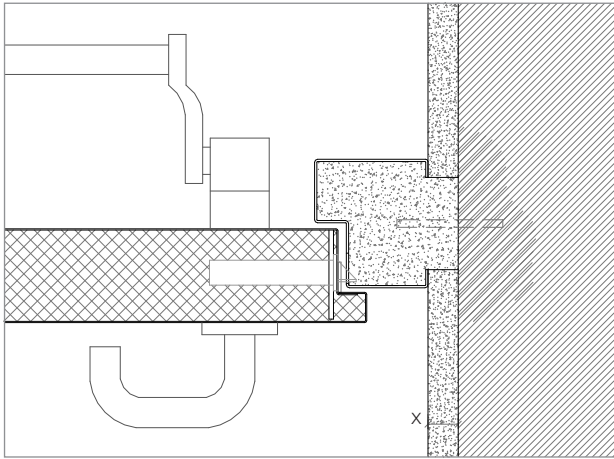
double leaf
horizontal section



vertical section

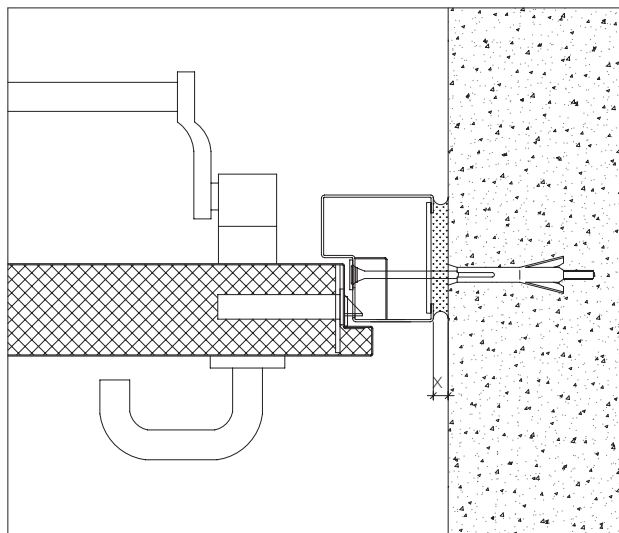
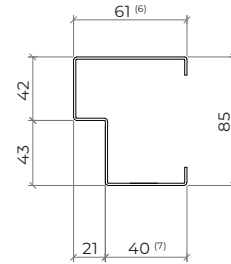
special solutions upon request

details



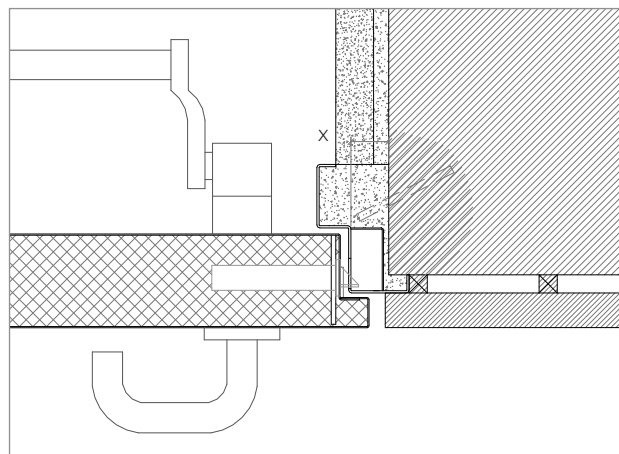
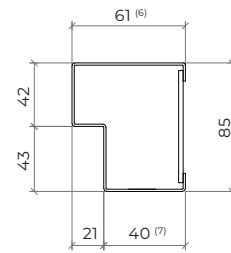
X ≥ 20 mm (steel rod fixation)

standard frame | masonry wall mounting | steel rod fixation | plaster finish



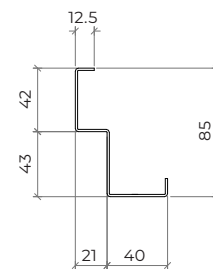
X ≥ 5-10 mm (for fixing with metal wall plugs according to wall type)

standard frame | hidden hinge leaf | concrete wall mounting | metal wall plugs fixation

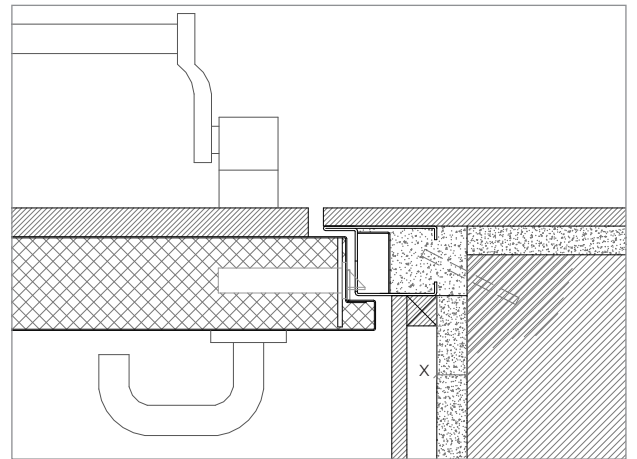
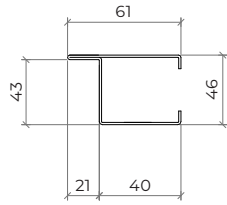


X ≥ 20 mm (steel rod fixation) ⁽⁶⁾

M40 type of frame ⁽⁶⁾ | masonry wall mounting | steel rod fixation | plaster and wood finishes

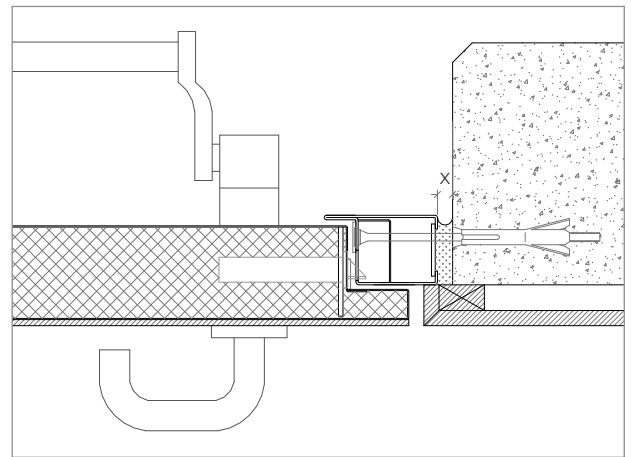
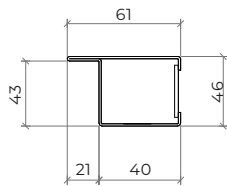


Modified frame ⁽⁶⁾ | standard leaf | masonry wall mounting | steel rod fixation | plaster and wood finishes



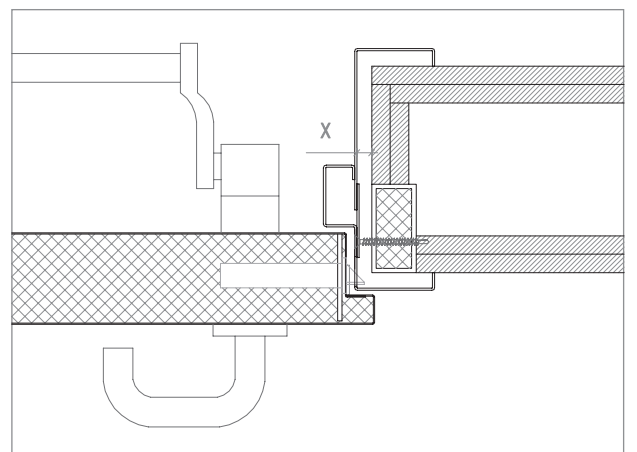
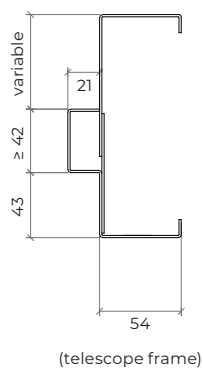
X ≥ 20 mm (steel rod fixation)

Modified frame ⁽⁶⁾ | hidden hinge leaf | concrete wall mounting | metal wall plugs fixation



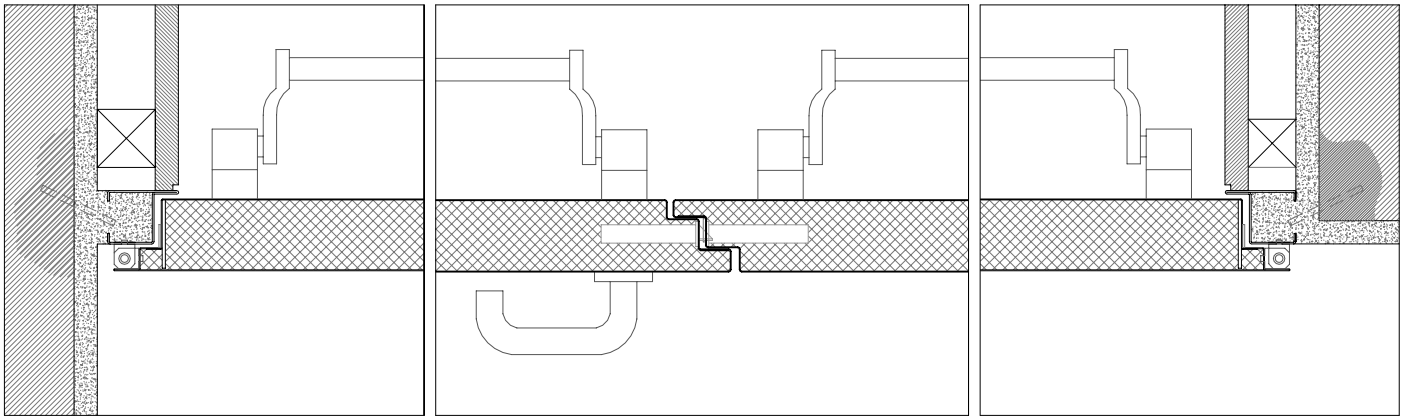
X ≥ 5-10 mm (for fixing with metal wall plugs according to wall type)

Modified frame ⁽⁶⁾ | gypsum wall mounting | metal portico fixation

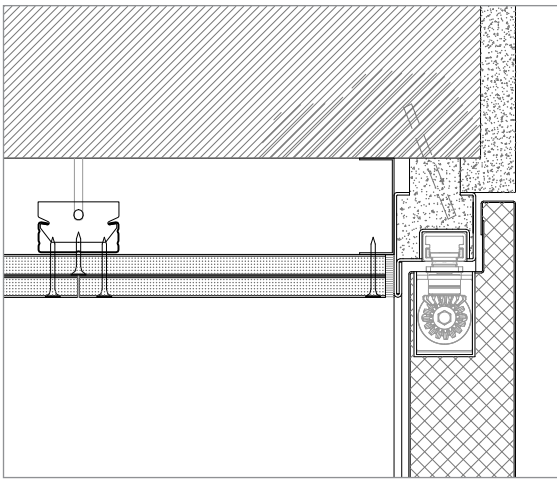


X ≥ 10 mm (for screw connection according to wall type)

⁽⁶⁾ consult TRIA technical department to evaluate this option.



hidden hinge leaf



modified frame ⁽⁶⁾ | masonry wall mounting | steel rod
fixation | plaster finish | hidden door closer

⁽⁶⁾ consult TRIA technical department to evaluate this option.

GROUP COMPANY



TRIA SA.

Parque Ind. Manuel Lourenço Ferreira - Lt.43
3450 - 232 Mortágua, Portugal
//+351 231 927 480 //geral@tria.pt

www.tria.pt

VERS.**08**.23A