



P1.60AC & P2.60AC

RF SERIES







MODELS

P1.60AC
single hinged leaf

P2.60AC
double hinged leaf



MODELS

P1.60AC

P2.60AC

description

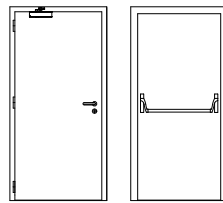
Hinged metal door with the frame made of bended electro-zinc coated steel profiles (1.5 mm thickness) welded to each other. On the hinges side are welded steel spikes which engage the leaf's top when the door is closed.

The leaf is made of two electro-zinc coated steel panels (0.8 mm thickness) and contains thermal insulating and acoustic materials according to the TRIA constructive system.

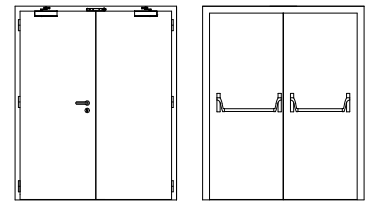
The high level sound attenuation is ensured by acoustic joints and can be increased adding a threshold. The leaf's bottom contains an automatic seal.

The pivoting function of the door is ensured by three exclusive hinges of this series. If desired, the hinges can be hidden by extending the panel of the leaf, on all three sides in order to maintain the symmetry of the door.

specification



P1.60AC | single hinged leaf



P2.60AC | double hinged leaf

model | typology

classification achieved when tested

acoustic | EN 20140-3

38 / 44 ⁽¹⁾ dB

40 / 46 ⁽¹⁾ dB

⁽¹⁾ including threshold.

dimensions (mm)

W x H (standard) ⁽²⁾

800 | 900 x 2025 / 2100

1400 / 1600 / 1800 x 2025 / 2100

W maximum

900

1900

H maximum

2100

2100

external frame (standard)

L + 150 x H + 75

L + 150 x H + 75

other dimensions

upon request

upon request

⁽²⁾ W x H = width x height = free passage

construction

leaf thickness (mm)

62

62

leaf weight (kg / m²)

28.5

28.5

hinges (per leaf)

3

3

standard vision panel (mm)

Ø 500 / 500 X 500

Ø 500 / 500 X 500

finishing (standard)

electro-zinc coated steel for
painting / lacquering in standard
RAL color ⁽³⁾

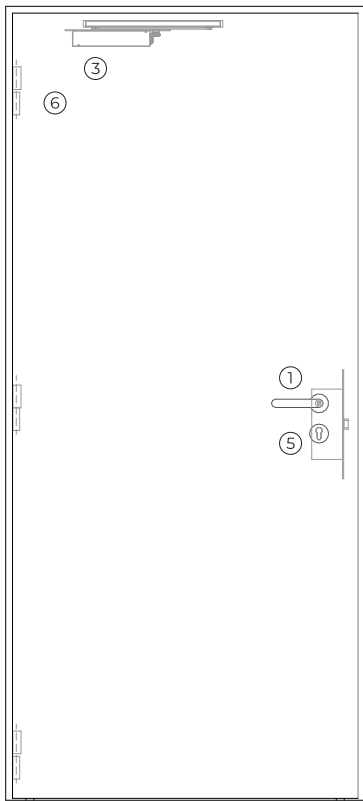
electro-zinc coated steel for
painting / lacquering in standard
RAL color ⁽³⁾

finishing (optional)

stainless/ wood veneer

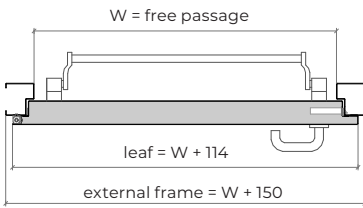
stainless/ wood veneer

⁽³⁾ standard RAL colors = 7035, 7038, 9005 e 9010.

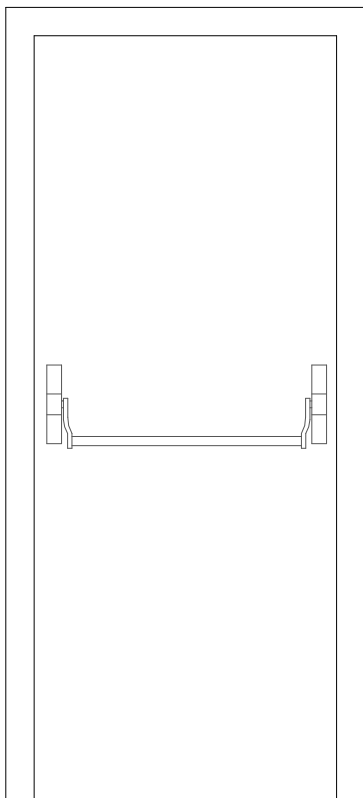


P1.60AC

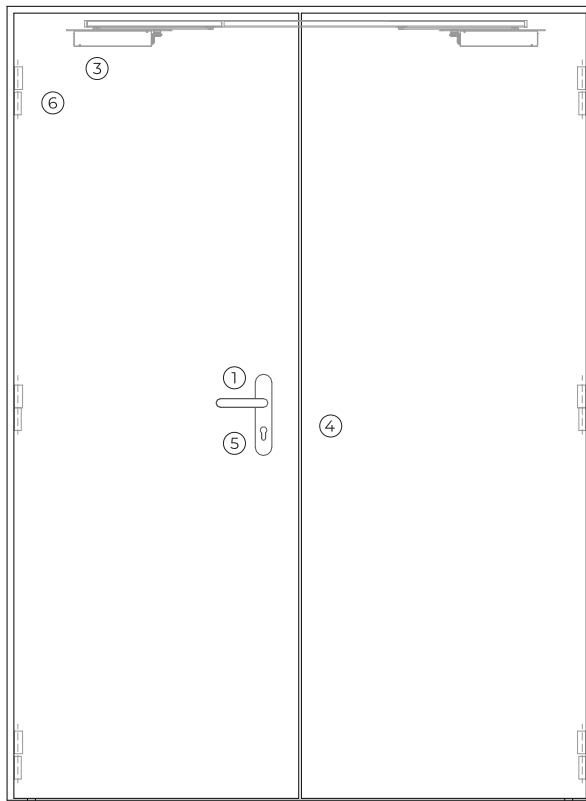
exterior view



horizontal section

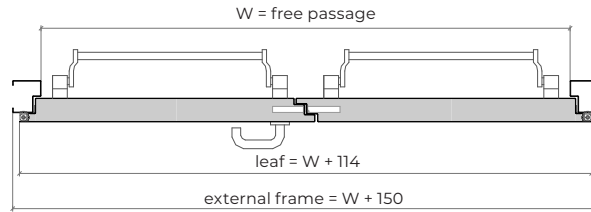


interior view

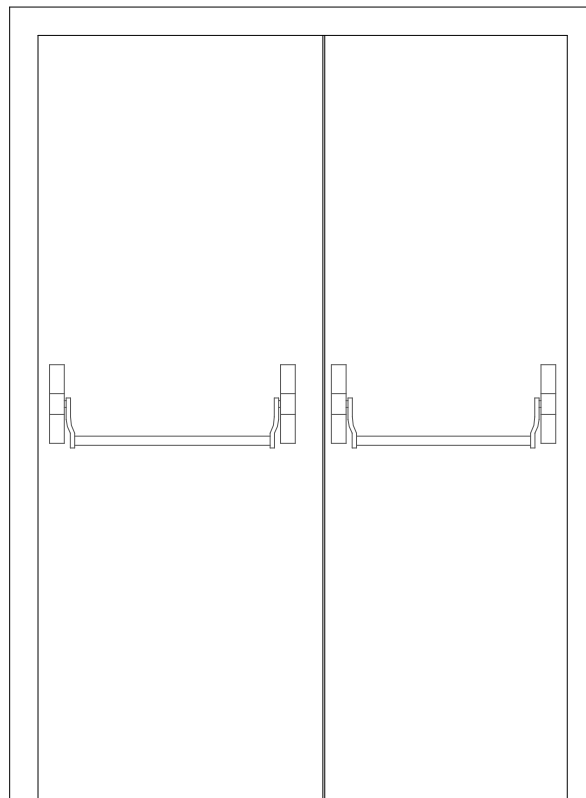


P2.60AC

exterior view

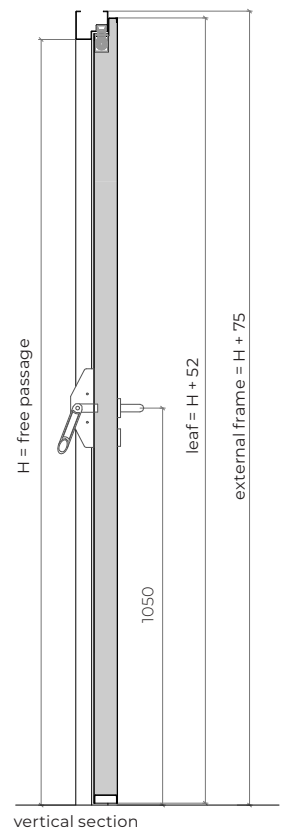


horizontal section



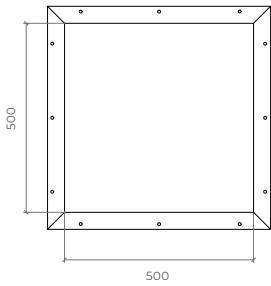
interior view

STANDARD HINGES

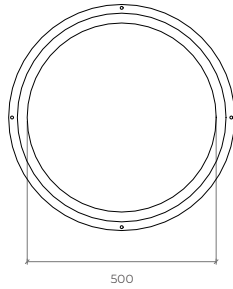


vertical section

optionals



square vision panel



round vision panel

accessories and hardware

HIDDEN HINGES

P1.60AC

P2.60AC

handle / anti-panic bar ⁽⁴⁾

- | | | | | | |
|--|---|----------|--|--|--|
| | 1 | standard | anti-panic lever handle finished in black or stainless steel. | | |
| | 2 | standard | anti-panic bar with gear unit, tube, cover caps and arms.
(black - black / black - red / black - green / silver - silver / stainless steel - stainless steel) | | |

⁽⁴⁾ alternatively, the door may be equipped with a pair of handles.

hidraulic door closer ⁽⁵⁾

- | | | | | | |
|--|---|----------|-------------------------------|--|---|
| | 3 | standard | door closer with an link arm. | | door closers with link arms + closing sequence selector. |
| | | optional | door closer with guide rail. | | door closers with guide rail + closing sequence selector. |
| | | optional | concealed door closer. | | concealed door closers with closing sequence selector. |

⁽⁵⁾ with electromagnetic hold-open (optional).

lock / counter lock

- | | | | | | |
|--|---|------------------|--|--|---|
| | 4 | standard | anti-panic lock with 1 locking point. | | anti-panic lock with 1 locking point + counter lock. |
| | | other dimensions | anti-panic lock with 3 locking points. | | anti-panic lock with 3 locking points + counter lock. |

cylinder

- | | | | | | |
|--|---|----------|---|--|--|
| | 5 | standard | cylinder (european profile).
1/2 cylinder (european profile) with anti-panic accesories. | | |
|--|---|----------|---|--|--|

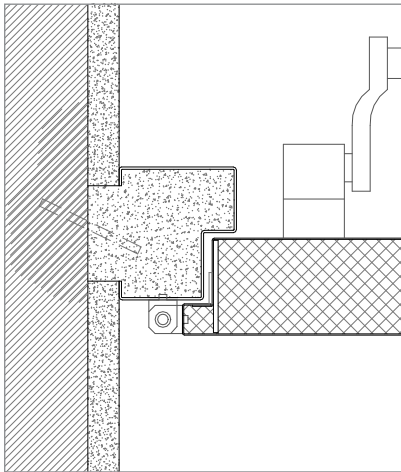
hinges

- | | | | | | |
|--|---|----------|------------------------------------|--|---|
| | 6 | standard | 3 exclusive hinges of this series. | | 3 exclusive hinges of this series (per leaf). |
|--|---|----------|------------------------------------|--|---|

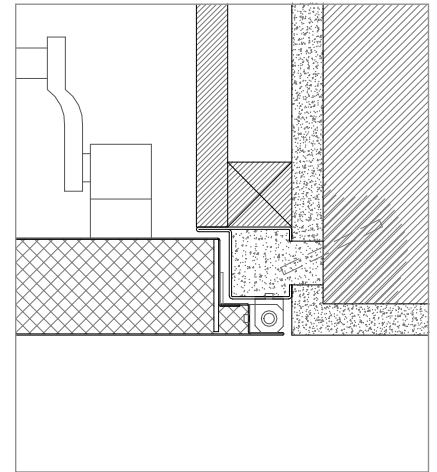
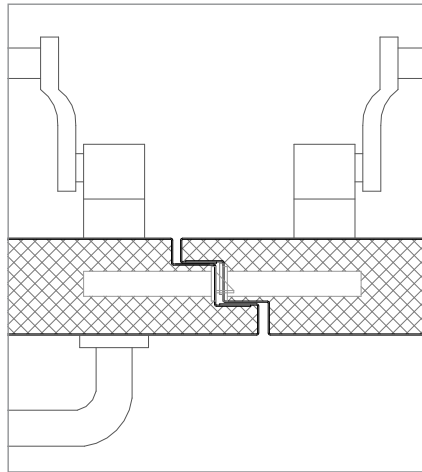
others

- | | | | | | |
|--|-----------|--|--|--|--|
| | optionals | | square, rectangular and round vision panel, intumescent grill. | | |
|--|-----------|--|--|--|--|

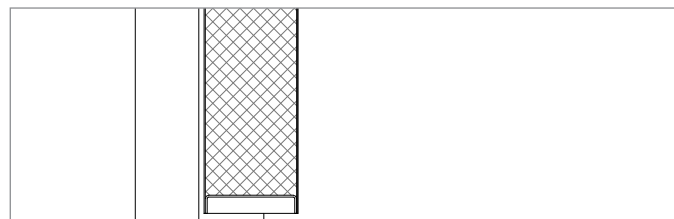
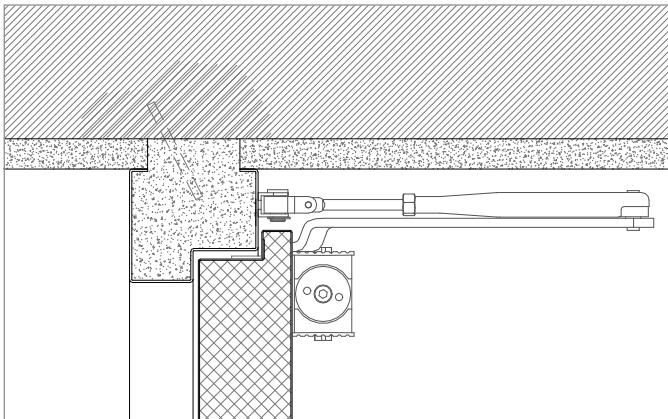
details



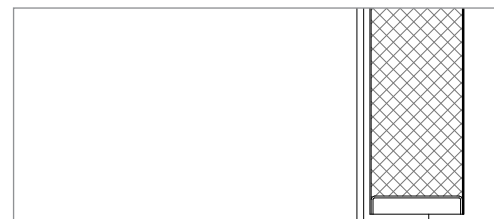
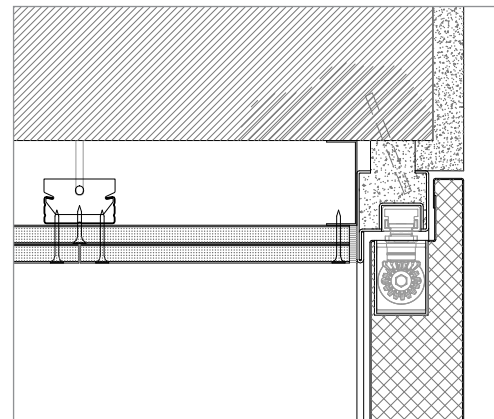
standard leaf



hidden hinge leaf



standard frame | masonry wall mounting | steel rod fixation | plaster finish | door closer with a link arm.



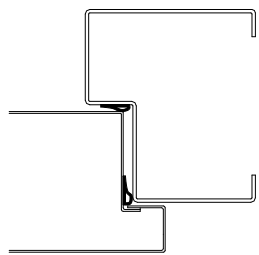
modified frame ⁽⁶⁾ | masonry wall mounting | steel rod fixation | plaster finish | hidden door closer

⁽⁶⁾ consult TRIA technical department to evaluate this option.

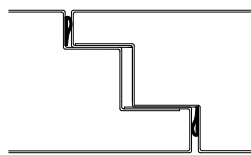
technical details

The use of acoustic seals ensures a high level of sound attenuation. The leaf's bottom contains an automatic seal.

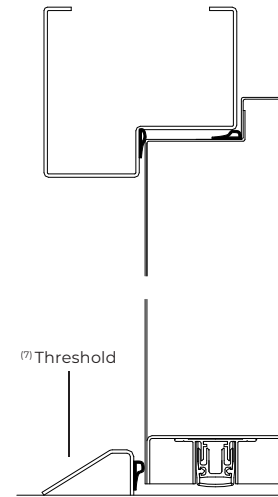
note: in the case that it is necessary a higher sound attenuation, a threshold should be applied. if necessary, can be provided a threshold ⁽⁷⁾.



single leaf
horizontal section

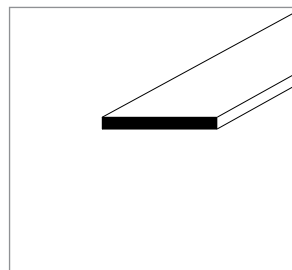


double leaf
horizontal section

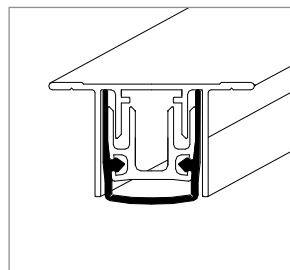


vertical section

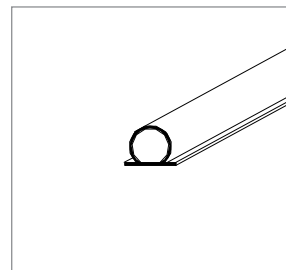
details



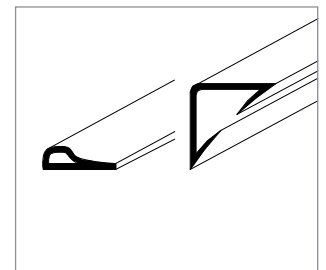
intumescent seal



automatic seal (V.A.S.)

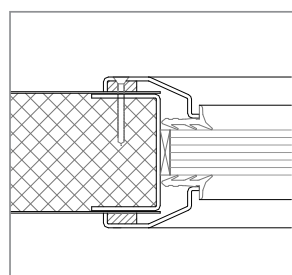


acoustic seal

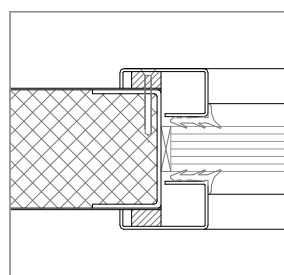


acoustic and intumescent seal

types of vision panels



round vision panel



rectangular vision panel

GROUP COMPANY



TRIA SA.

Parque Ind. Manuel Lourenço Ferreira - Lt.43
3450 - 232 Mortágua, Portugal
//+351 231 927 480 //geral@tria.pt

www.tria.pt

VERS.10.22A