



M SERIES







MODELS

P1M

single hinged leaf

P1M2

double hinged leaf

P90M

single hinged leaf

P90M2

double hinged leaf

P2M2

double hinged leaf



MODELS

P1M / P1M2

P90M / P90M2

P2M2

description

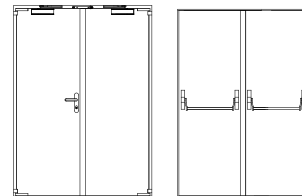
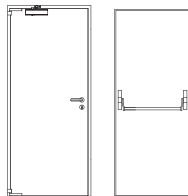
Hinged metal door with the frame made of bended electro-zinc coated steel profiles (2 mm thickness) welded to each other. On the hinges side are welded steel spikes which engage the leaf's top when the door is closed.

The leaf is made of two electro-zinc coated steel panels (0.8 mm thickness) and contains thermal insulating materials according to the TRIA constructive system.

The use of intumescent joints ensures the necessary tightness against flames and hot gases.

The pivoting behavior is ensured by two hinges in symmetrical positions with axial bearings. If necessary, it is possible to incorporate an intumescent grid in the leaf.

specification



model | typology

P1M (EI60) | single hinged leaf
P90M (EI90) | single hinged leaf

P1M2 (EI60) | double hinged leaf
P90M2 (EI90) | double hinged leaf
P2M2 (EI120) | double hinged leaf

classification achieved when tested

FR integrity (EN 1634-1) ⁽¹⁾	E 30 / E 60 / E 90 / E 120	E 30 / E 60 / E 90 / E 120
FR integrity and insulation (EN 1634-1) ⁽¹⁾	EI ₂ 30 / EI ₂ 60 / EI ₂ 90	EI ₂ 30 / EI ₂ 60 / EI ₂ 90 / EI ₂ 120
durability (EN 1191)	C5	C5

⁽¹⁾ classification according to standard 13501-2

dimensions (mm)

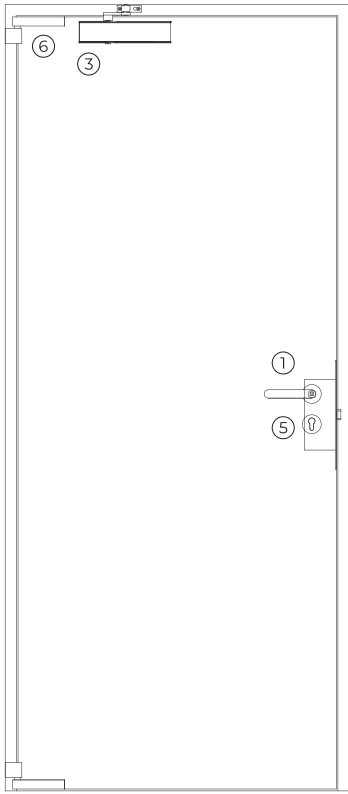
W X H (standard) ⁽²⁾	800 / 900 X 2000 / 2100	1400 / 1600 / 1800 X 2025 / 2100
W maximum	1090 (EI60) / 1035 (EI90)	1840 (EI60) / 2185 (EI90) / 2520 (EI120)
H maximum	2760 (EI60) / 2415 (EI90)	2415 (EI60) / 2415 (EI90) / 3240 (EI120)
external frame (standard)	L + 110 X H + 55	L + 110 X H + 55
other dimensions	upon request	upon request

⁽²⁾ W X H = width X height = free passage

construction

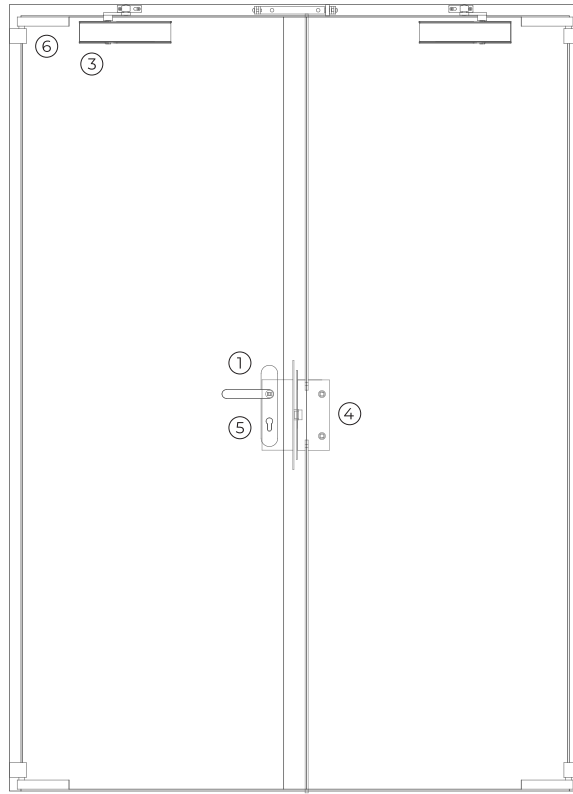
leaf thickness (mm)	57	57
leaf weight (kg / m ²)	45 (EI60) / 54 (EI90)	45 (EI60) / 54 (EI90) / 52 (EI120)
hinges (per leaf)	2	2
standard vision panel (mm)	Ø 300 / 300 X 400	Ø 300 / 300 X 400
finishing (standard)	steel electrocoating paint / lacquering in standard RAL color ⁽³⁾	steel electrocoating paint / lacquering in standard RAL color ⁽³⁾
finishing (optional)	stainless steel / wood veneer	stainless steel / wood veneer

⁽³⁾ standard RAL colors= 7035, 7038, 9005 e 9010



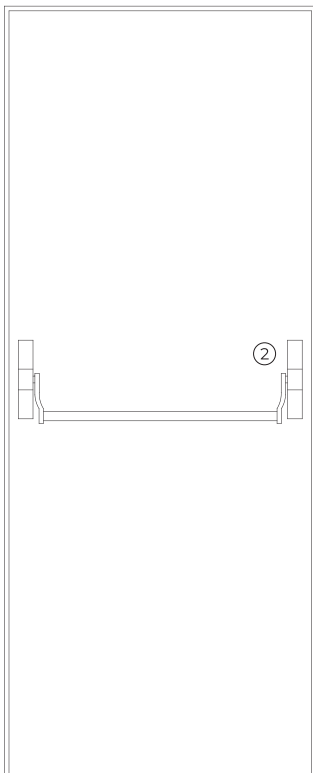
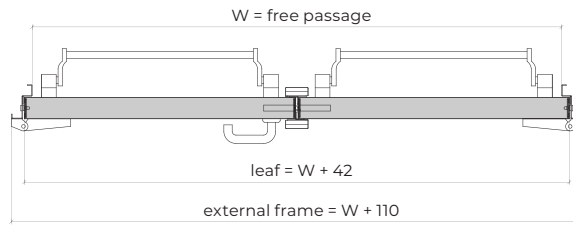
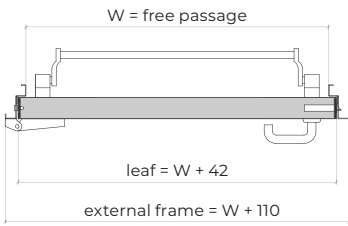
P1M / P90M

exterior view

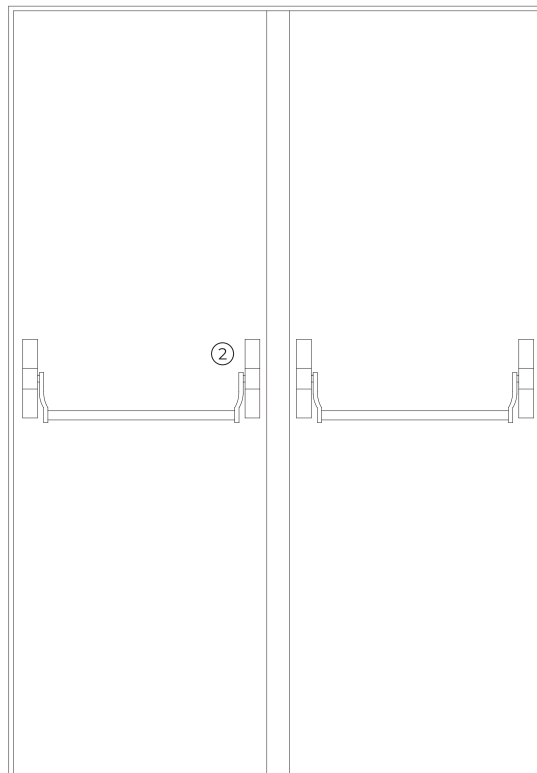


P1M2 / P90M2 / P2M2

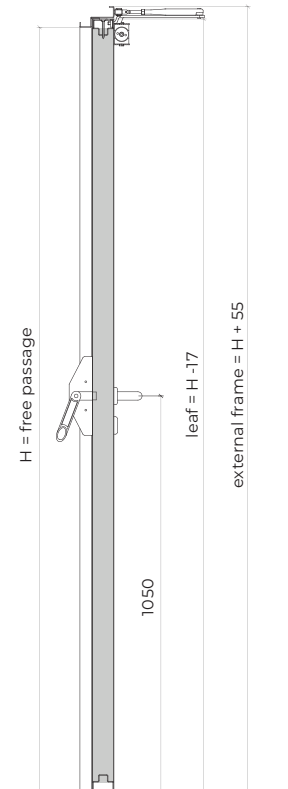
exterior view



interior view

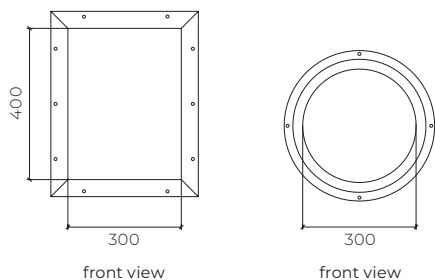


interior view



vertical section

optionals



accessories and hardware

P1M / P90M

P1M2 / P90M2 / P2M2

handle / anti-panic bar ⁽⁴⁾

- | | | | |
|---|----------|---|--|
| 1 | standard | anti-panic lever handle with drill finished in black (standard) or stainless steel | |
| 2 | standard | anti-panic bar with gear unit, tube, cover caps and arms finished in nylon black (standard) or stainless steel. | |

⁽⁴⁾ alternatively, the door may be equipped with a pair of handles.

hidraulic door closer ⁽⁵⁾

- | | | | |
|---|----------|--------------------------------------|--|
| 3 | standard | door closer with an articulated arm. | door closers with articulated arms + closing sequence selector |
| | optional | door closer with sliding rail. | door closers with sliding rail and closing sequence selector included. |

⁽⁵⁾ with electromagnetic hold-open (optional)

lock / counter lock

- | | | | |
|---|----------|---------------------------------------|--|
| 4 | standard | anti-panic lock with 1 locking point. | anti-panic lock with 1 locking point + counter lock. |
|---|----------|---------------------------------------|--|

cylinder

- | | | | |
|---|----------|---------------------------------|--|
| 5 | standard | 1/2 cylinder (european profile) | |
|---|----------|---------------------------------|--|

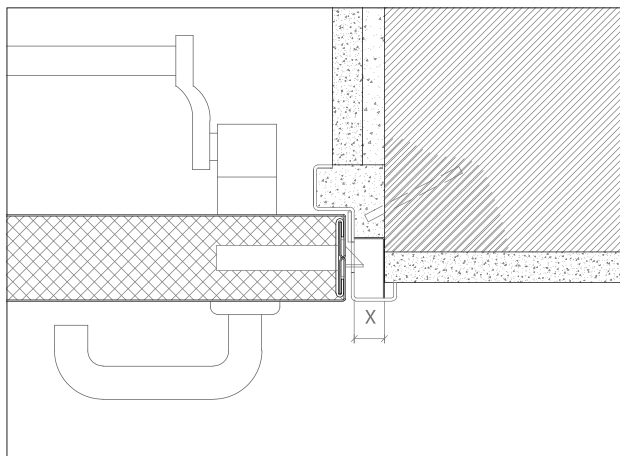
hinges

- | | | | |
|---|----------|-----------------------------------|--|
| 6 | standard | 2 exclusive hinges of this series | 2 exclusive hinges of this series (per leaf) |
|---|----------|-----------------------------------|--|

others

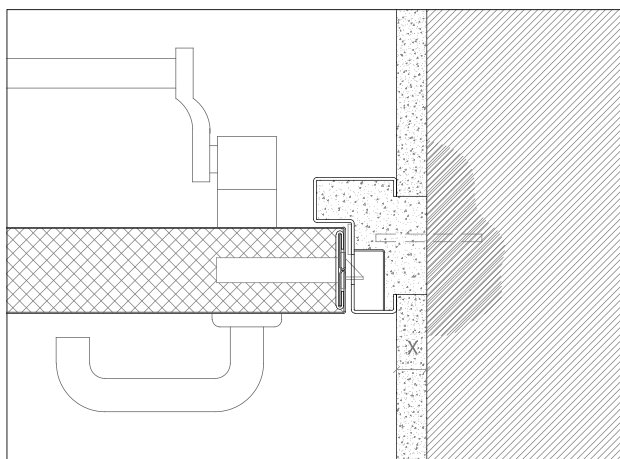
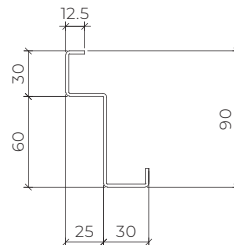
- | | |
|----------|------------------------------------|
| optional | rectangular and round vision panel |
|----------|------------------------------------|

details



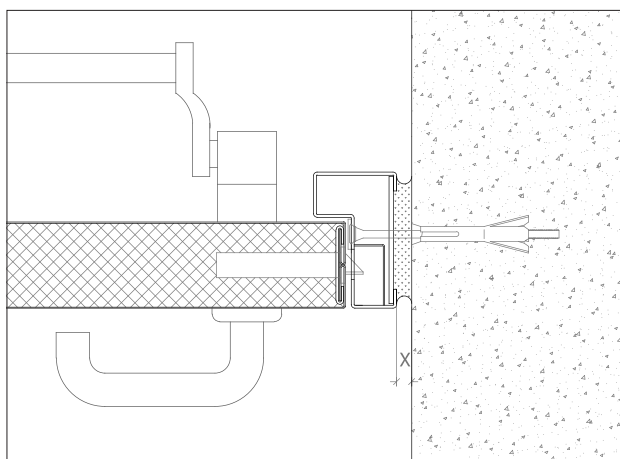
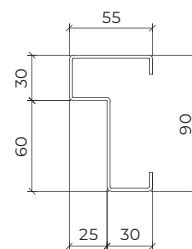
X > 20 mm (steel rod fixation)

standard frame | masonry wall mounting | steel rod fixation | plaster finish



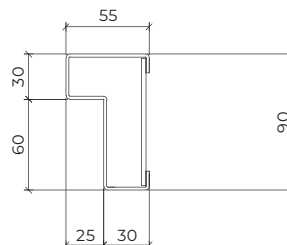
X > 20 mm (steel rod fixation)

modified frame | masonry wall mounting | steel rod fixation | plaster finish

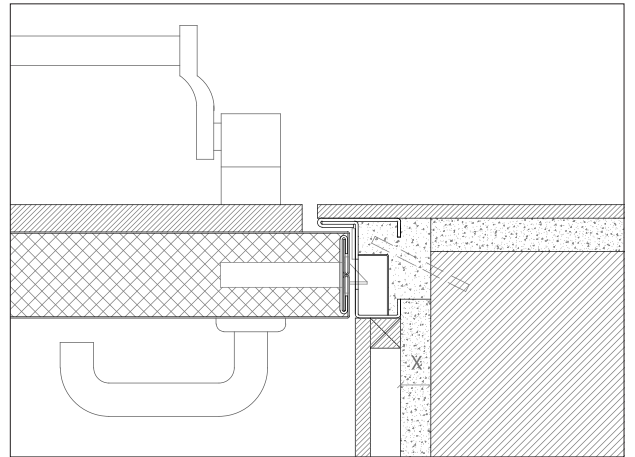
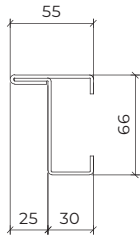


X ≥ 5 - 10 mm (for fixing with metal wall plugs according to wall type)

modified frame | concrete wall mounting | metal wall plugs fixation

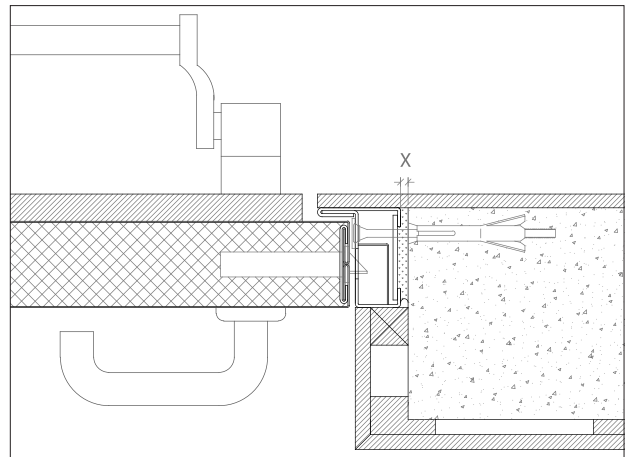
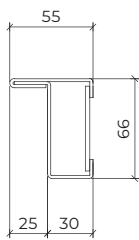


modified frame | masonry wall mounting | steel rod fixation | plaster and wood finishes | solution on request



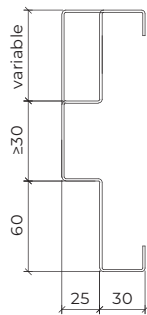
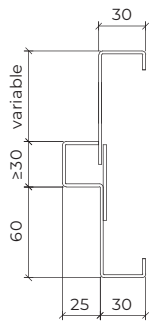
$X > 20$ mm (steel rod fixation)

modified frame | concrete wall mounting | metal wall plugs fixation | wood finishes | solution on request

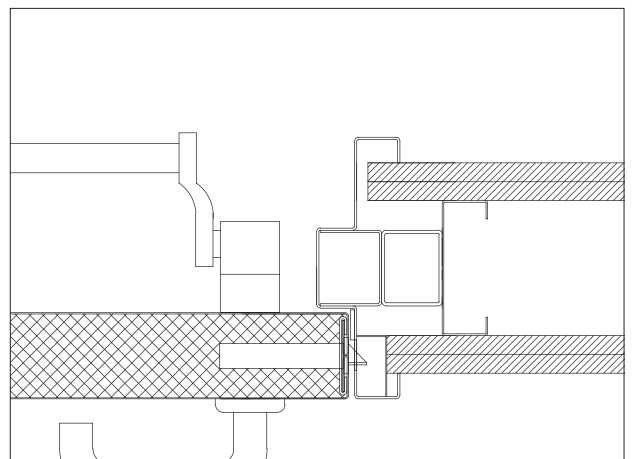


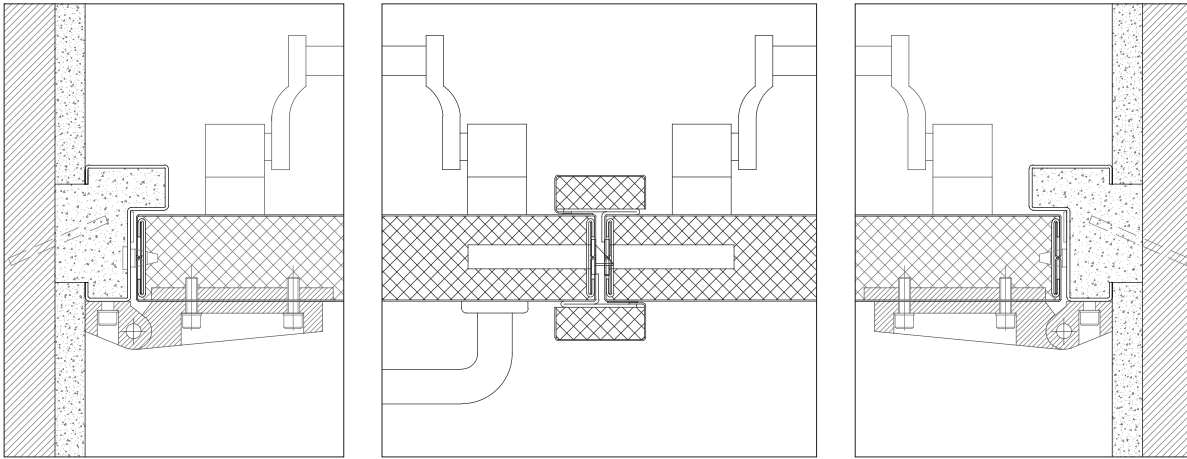
$X \geq 5-10$ mm (for fixing with metal wall plugs according to wall type)

modified frame | gypsum wall mounting | metal portico fixation | solution on request

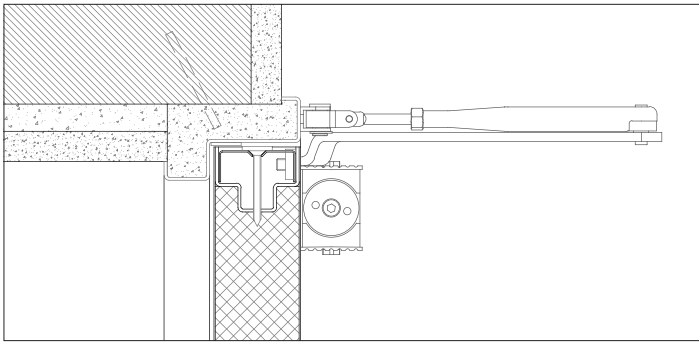


(telescope frame)

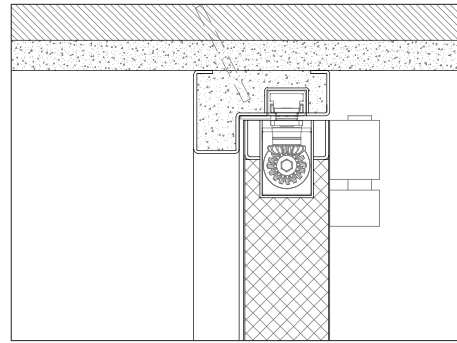




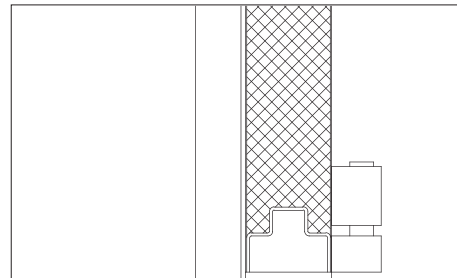
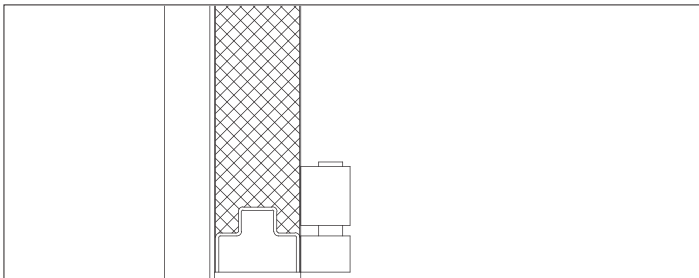
standard frame | masonry wall mounting | steel rod fixation | plaster finish



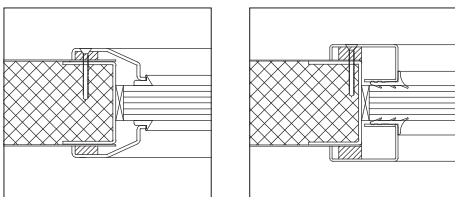
standard frame | masonry wall mounting | steel rod fixation | plaster finish | door closer with an articulated arm.



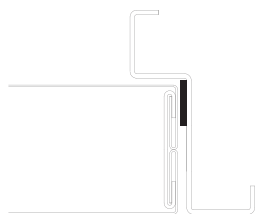
closed frame | masonry wall mounting | steel rod fixation | plaster finish | hidden door closer | solution on request



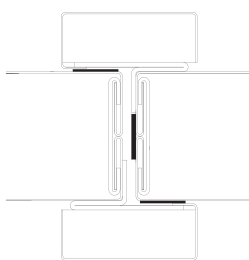
types of vision panels



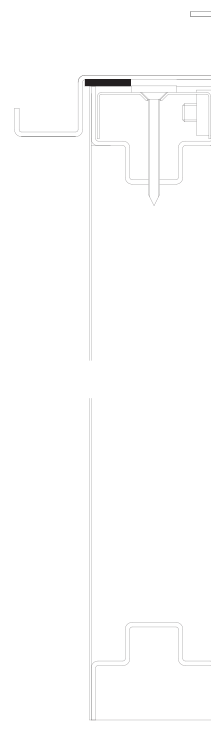
The use of intumescent joints ensures the necessary tightness against flames and hot gases.



single leaf
horizontal section

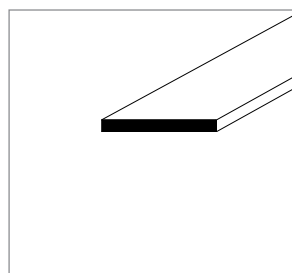


double leaf
horizontal section



vertical section

details



Intumescent seal

GROUP COMPANY



TRIA SA.

Parque Ind. Manuel Lourenço Ferreira - Lt.43
3450 - 232 Mortágua, Portugal
//+351 231 927 480 //geral@tria.pt

www.tria.pt

VERS.10.22A