



INVICTA S.X1

INVICTA SERIES







MODEL

INVICTA S.X1
single hinged leaf



MODEL

INVICTA S.X1

description

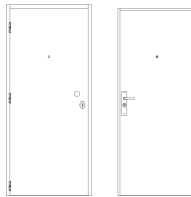
Hinged metal door with the frame made of bended electro-zinc coated steel profiles (2 mm thickness) welded to each other, containing a thermal and acoustic insulating rubber all over its periphery. When the door is closed, the hinges side of the leaf will fully nest (from top to bottom) into the frame. The leaf is made of two electro-zinc coated steel panels (1.5 mm thickness) and it contains thermal and acoustic insulating materials.

The leaf's bottom contains an automatic seal. In order to prevent access to the lock, a steel bar is welded along the entire height of the leaf, which acts as a jamb.

The pivoting behavior of the door is ensured by three exclusive hinges of this series. In order to ensure the anti-intrusion effectiveness, is included a high security lock of 5 locking points from FICHET, equipped with a FICHET anti-burglary cylinder with 100 million of different combinations, whose keys are reproducible only with a magnetic card.

specification

model | typology



INVICTA S.XI | single hinged leaf

classification achieved when tested

burglar resistance (EN 1628-30) ⁽¹⁾

RC 4 (side of the hinges)

⁽¹⁾ classification according to standard EN 1627

dimensions (mm)

W x H (standard) ⁽²⁾

800 / 900 x 2000 / 2100

W maximum

990

H maximum

2310

external frame (standard)

L + 124 x H + 62

other dimensions

upon request

⁽²⁾ W x H = width x height = free passage

construction

leaf thickness (mm)

58

leaf weight (kg/m²)

61

hinges (per leaf)

3

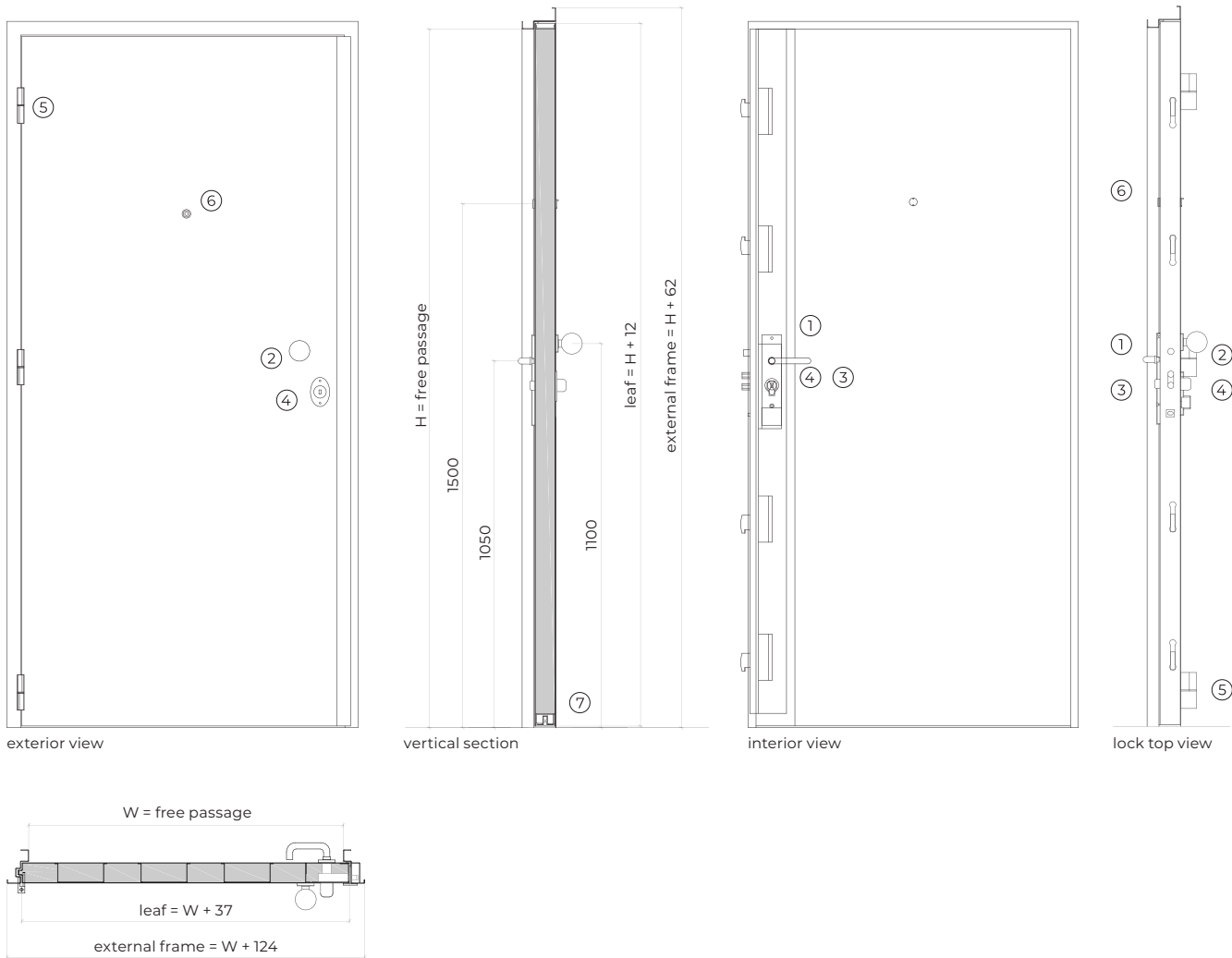
finishing (standard)

electro-zinc coated steel for painting /
lacquering in standard RAL color ⁽³⁾

finishing (optional)

wood veneer / mdf for painting/stainless

⁽³⁾ standard RAL colors= 7035, 7038, 9005 e 9010

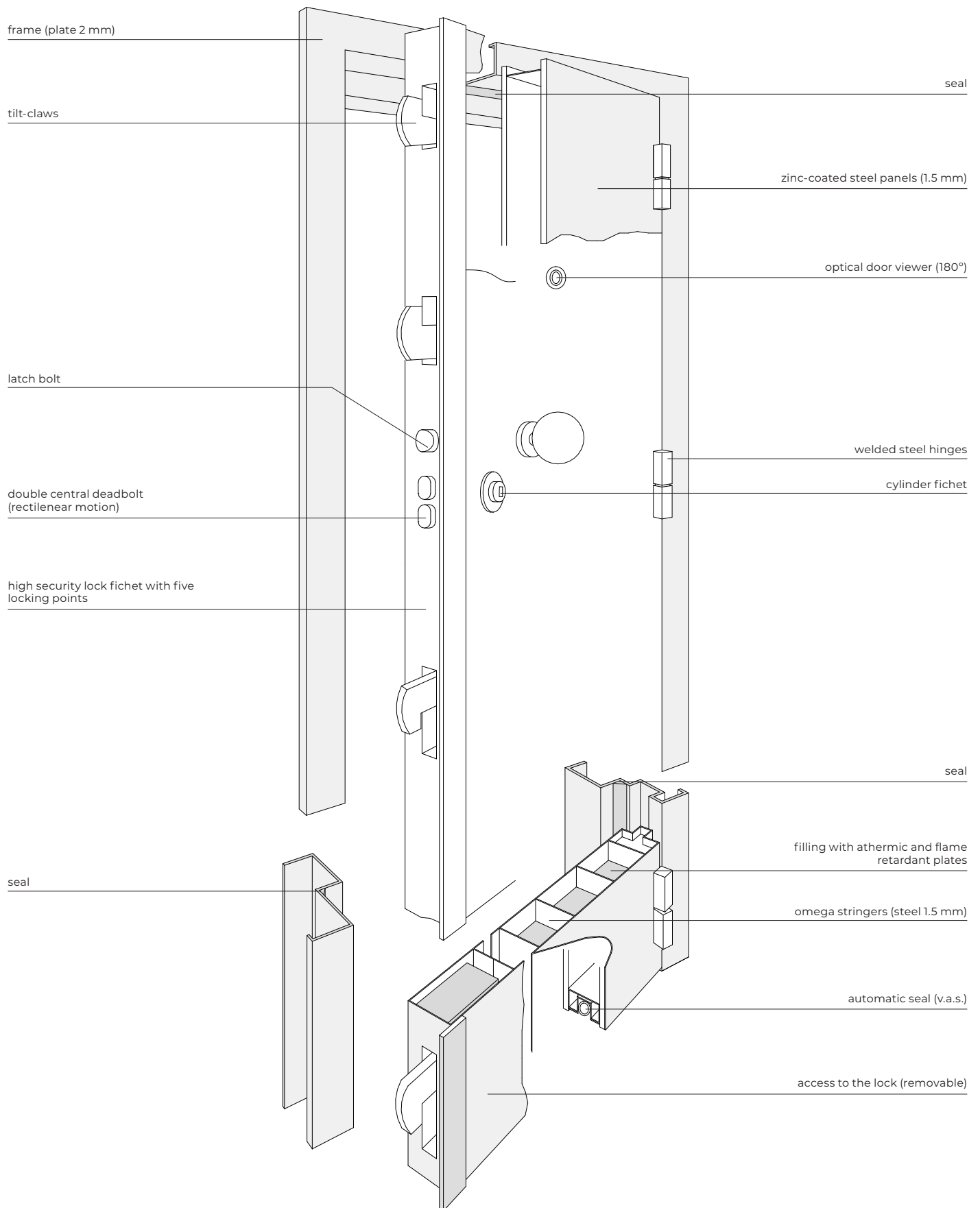


accessories and hardware

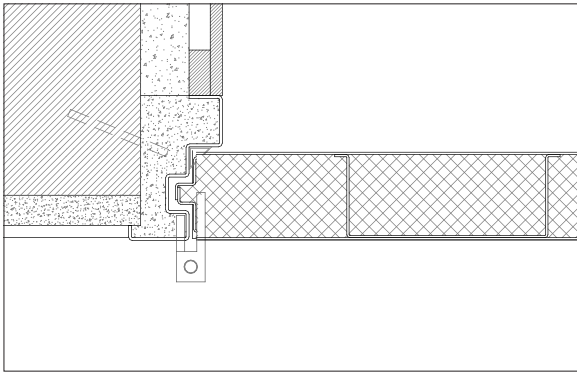
| | | | |
|-----------------|---|----------|-----------------------------------------------------------------------------------------------------------------------------------------------------------|
| handle | 1 | standard | lever handle (interior). |
| | 2 | standard | fixed ball handle (exterior). |
| lock | 3 | standard | high security lock FICHET with five locking points (4 tilt-claws + double central deadbolt) and a semi-automatic stopping device integrated in the frame. |
| cylinder | 4 | standard | high security cylinder FICHET anti-burglary, with 100 million of different combinations, whose keys are reproducible only with a magnetic card at FICHET. |
| hinges | 5 | standard | 3 exclusive hinges of this series made of solid steel. |
| others | 6 | standard | optical door viewer (180°). |
| | 7 | standard | automatic seal (VAS). |
| | | optional | electric strike. |
| | | optional | acoustic kit. |

note: there is the possibility of installing a door closer with articulated arm or sliding rail, as well as a magnetic contact embedded in the leaf to signal if the door is closed or opened.

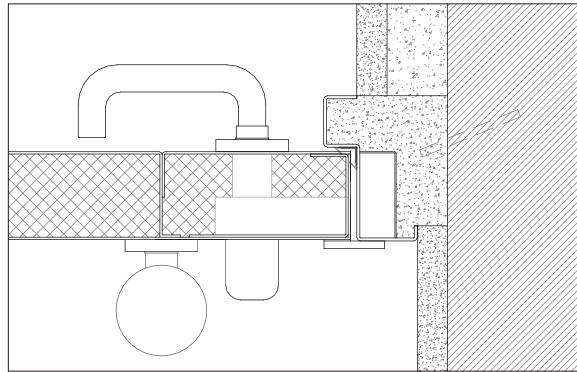
perspective



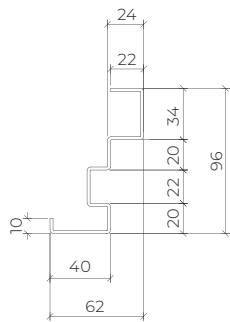
details



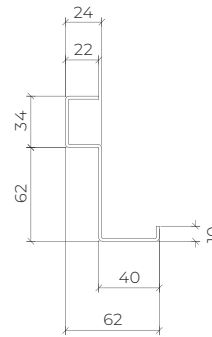
standard frame | masonry wall mounting | steel rod fixation | plaster and wood finishes



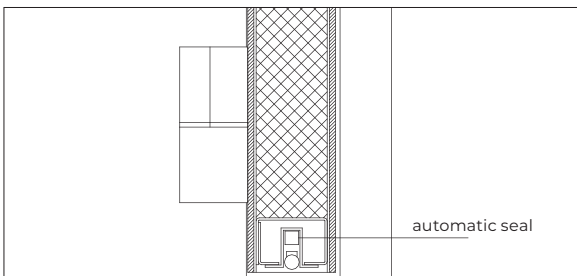
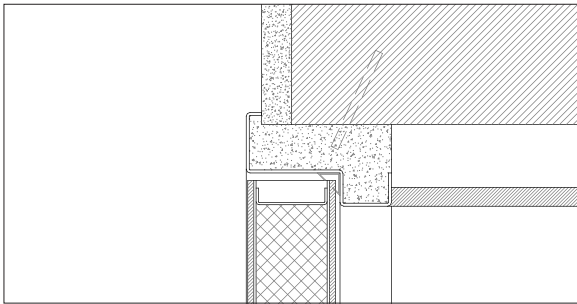
standard frame | masonry wall mounting | steel rod fixation | plaster finish



modified frame (hinges side)



modified frame (lock side)



standard leaf | Standard frame | masonry wall mounting | steel rod fixation | plaster and gypsum finishes

GROUP COMPANY



TRIA SA.

Parque Ind. Manuel Lourenço Ferreira - Lt.43
3450 - 232 Mortágua, Portugal
//+351 231 927 480 //geral@tria.pt
www.tria.pt

VERS.10.22A