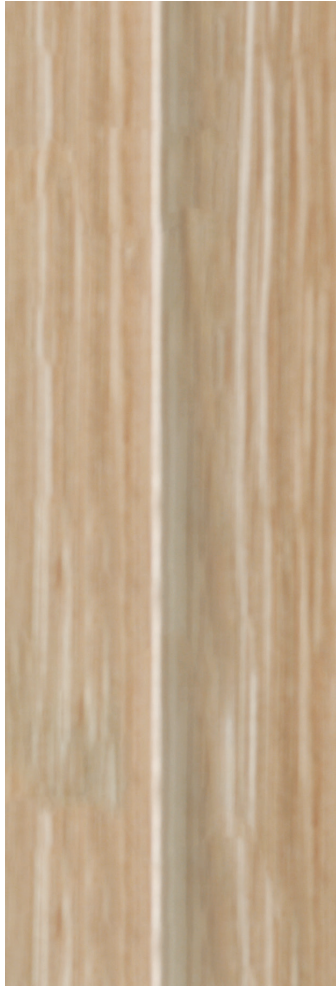




INVICTA S.1

INVICTA SERIES







MODEL

INVICTA S.1
single hinged leaf



MODEL

INVICTA S.1

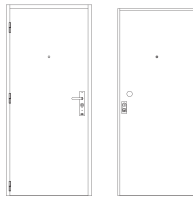
description

Hinged metal door with the frame made of bended electro-zinc coated steel profiles (2 mm thickness) welded to each other, containing a thermal and acoustic insulating rubber all over its periphery.

When the door is closed, the hinges side of the leaf will fully nest (from top to bottom) into the frame. The leaf is made of two electro-zinc coated steel panels (1.5 mm thickness) and it contains thermal and acoustic insulating materials. The leaf's bottom contains an automatic seal.

The pivoting behavior of the door is ensured by three exclusive hinges of this series. In order to ensure the anti-intrusion effectiveness, is included a high security lock with 5 locking points from FICHET, equipped with a FICHET anti-burglary cylinder with 100 million of different combinations, whose keys are reproducible only with a magnetic card, and a control cylinder which allows to block the main key.

specification



model | typology

INVICTA S.1 | single hinged leaf

classification achieved when tested

burglar resistance (EN 1628-30) ⁽¹⁾	RC 4 (opposite side of the hinges)
FR integrity (EN 1634-1) ⁽²⁾	E 30 / E 45
FR integrity and insulation (EN 1634-1) ⁽²⁾	EI 30
acoustics (EN 20140-3)	31 / 39 ⁽³⁾ dB
air permeability (EN 1026)	2
water tightness (EN 1027)	1A
wind resistance (EN 12211)	C5
thermal coef. (EN ISO 10077-1)	3.3 W / (m ² .°C)

⁽¹⁾ classification according to standard EN 1627

⁽²⁾ classification according to standard EN 13501-2

⁽³⁾ including acoustic kit

dimensions (mm)

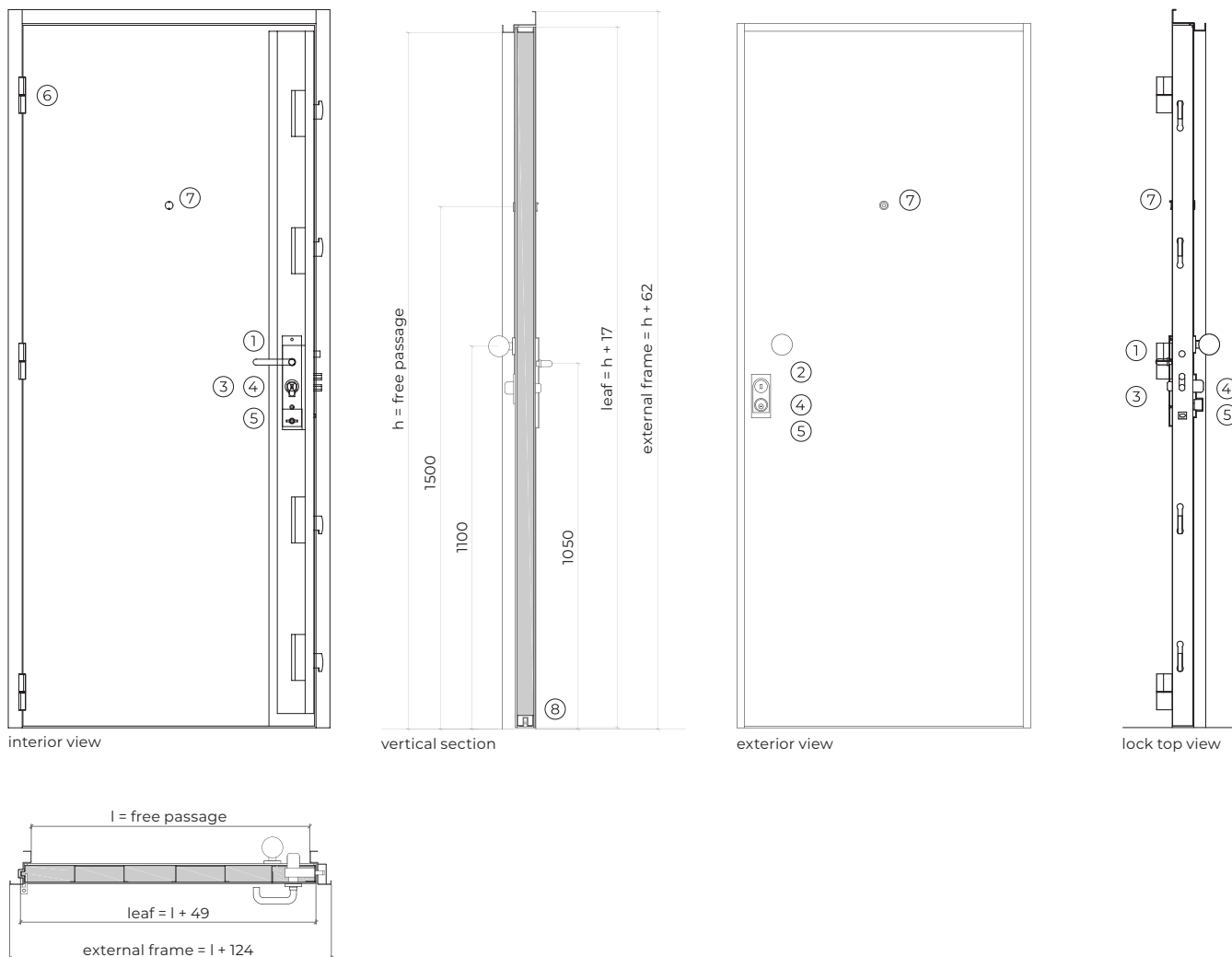
W x H (standard) ⁽⁴⁾	800 / 900 x 2000 / 2100
W maximum	990
H maximum	2310
external frame (standard)	L + 124 x H + 62
other dimensions	upon request

⁽⁴⁾ W x H = width x height = free passage

construction

leaf thickness (mm)	58
leaf weight (kg / m ²)	61
hinges (per leaf)	3
finishing (standard)	wood veneer
finishing (optional)	mdf for painting / electro-zinc coated steel for painting / lacquering in standard RAL color ⁽⁵⁾ / stainless steel

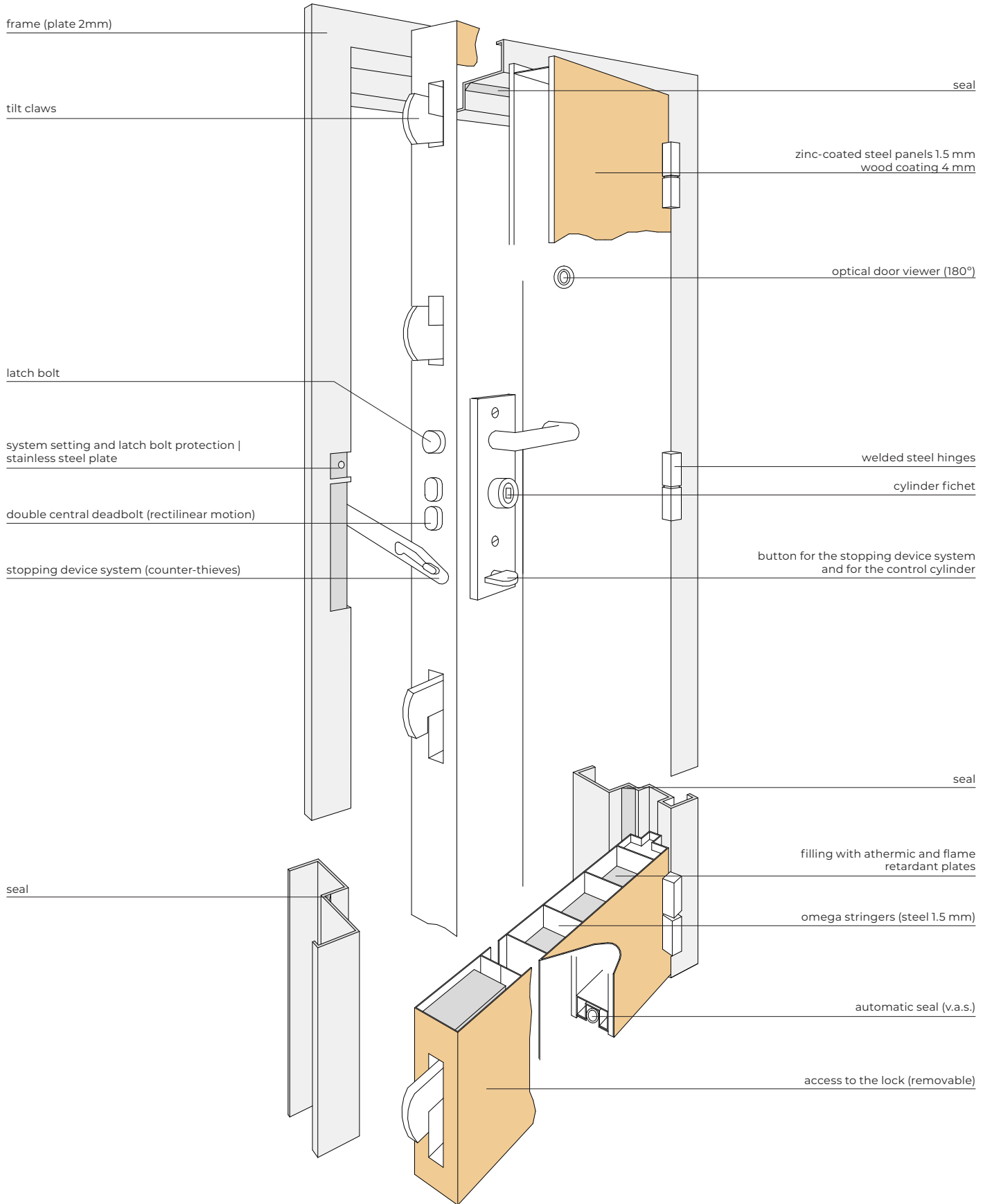
⁽⁵⁾ standard RAL colors= 7035, 7038, 9005 e 9010



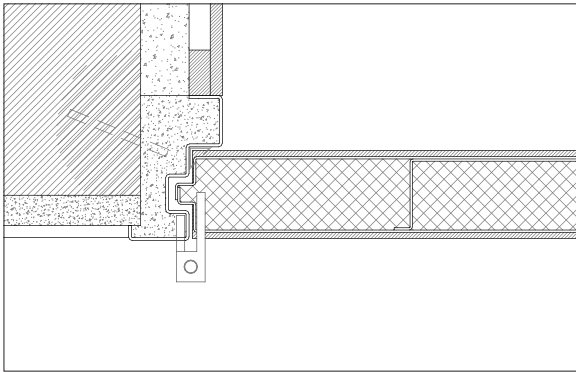
accessories and hardware

handle	1	standard	lever handle (interior) with an unlocker for the semi-automatic stopping device and an activator for the control cylinder.
	2	standard	fixed ball handle (exterior).
lock	3	standard	high security lock FICHET with five locking points (4 tilt-claws + double central deadbolt) and a semi-automatic stopping device integrated in the frame.laterais.
	4	standard	high security cylinder FICHET anti-burglary, with 100 million of different combinations, whose keys are reproducible only with a magnetic card at FICHET.
cylinder	5	standard	control cylinder which blocks the main key and enables the semi-automatic stopping device
	6	standard	3 exclusive hinges of this series made of solid steel.
hinges	7	standard	optical door viewer (180°).
	8	standard	automatic seal. (VAS).
		optional	electric strike.
others		optional	acoustic kit.

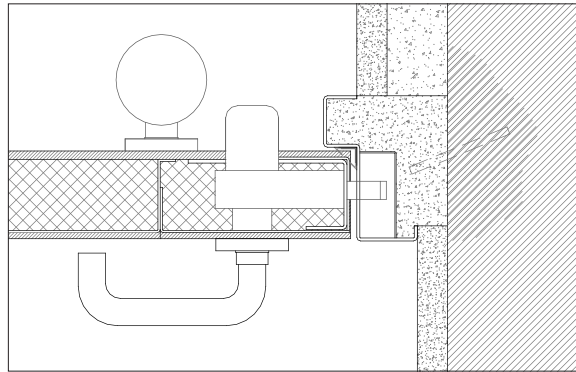
perspective



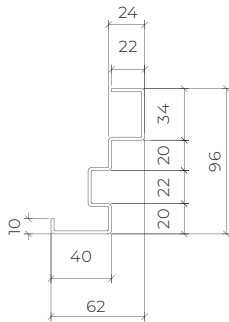
details



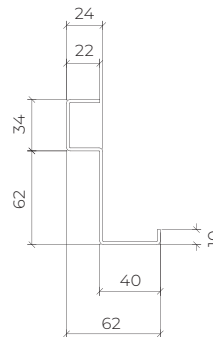
standard frame | masonry wall mounting | steel rod fixation | plaster and wood finishes



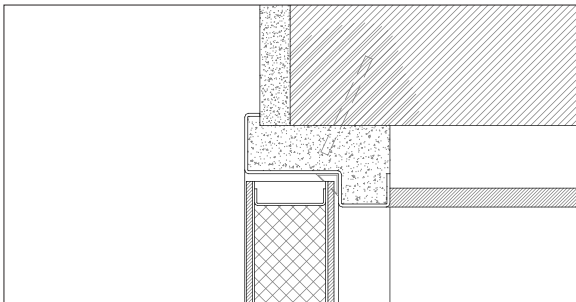
standard frame | masonry wall mounting | steel rod fixation | plaster finish



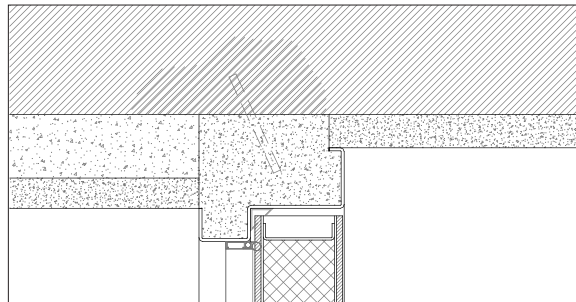
standard frame (hinges side)



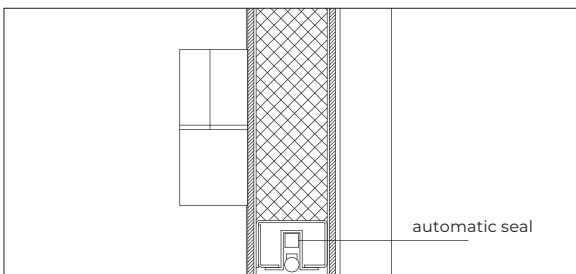
standard frame (lock side)



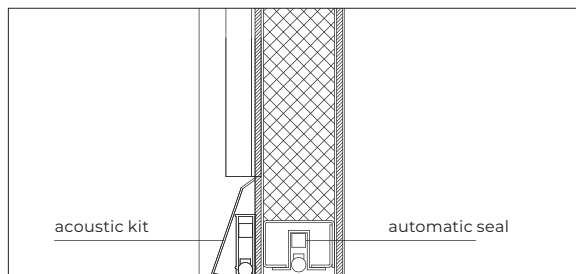
standard leaf | standard frame | masonry wall mounting | steel rod fixation | plaster and gypsum finishes



leaf with acoustic kit | Standard frame | masonry wall mounting | steel rod fixation | plaster finish

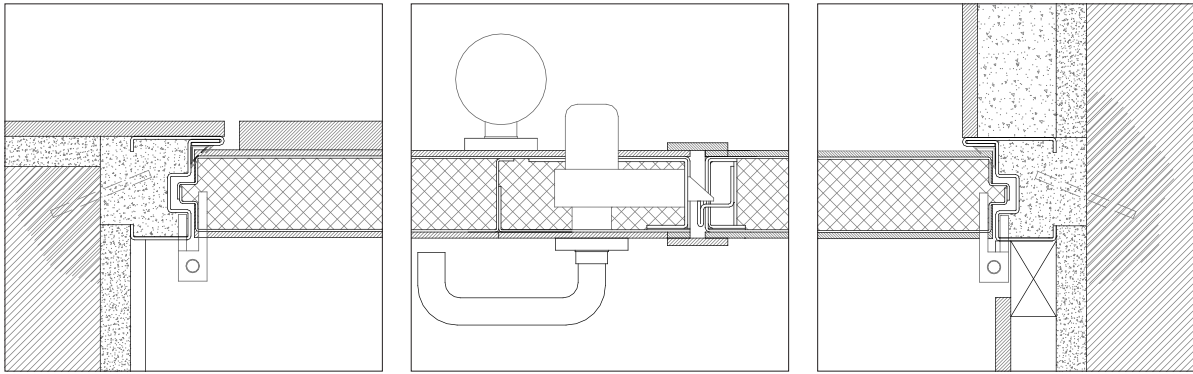


automatic seal

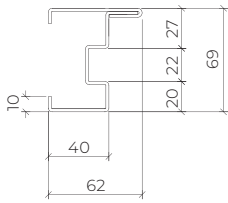


acoustic kit

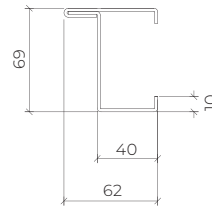
automatic seal



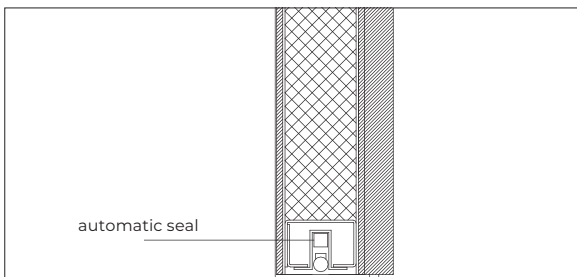
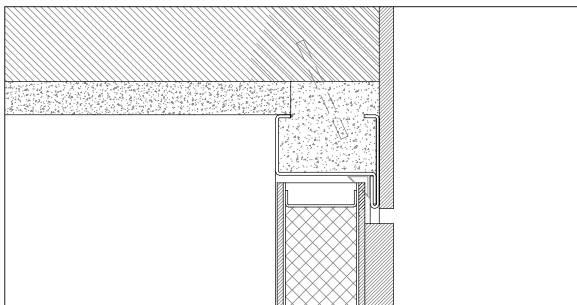
modified frame ⁽²⁾ | masonry wall mounting | steel rod fixation | plaster and wood finishes | double leaf detail.



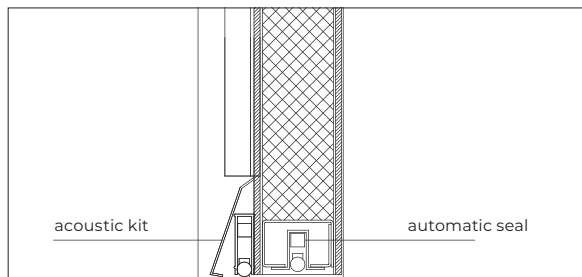
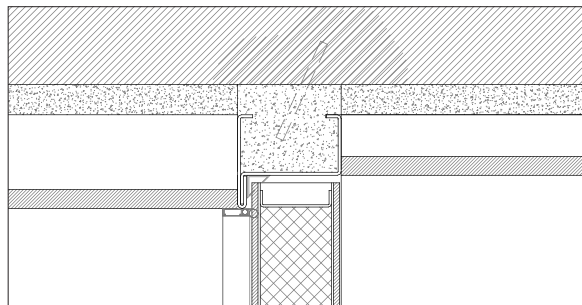
modified frame ⁽²⁾ (hinges side)



modified frame ⁽²⁾ (lock side)



standard leaf | modified frame ⁽²⁾ | masonry wall mounting | steel rod fixation | plaster and wood finishes.



leaf with acoustic kit | modified frame ⁽²⁾ | masonry wall mounting | steel rod fixation | gypsum finish.

⁽²⁾ consult TRIA technical department to evaluate this option.

GROUP COMPANY



TRIA SA.

Parque Ind. Manuel Lourenço Ferreira - Lt.43
3450 - 232 Mortágua, Portugal
//+351 231 927 480 //geral@tria.pt
www.tria.pt

VERS.**02.22A**