



ES 1 & ES 2

ES SERIES / schröders system







MODELS

ES 1
single hinged leaf

ES 2
double hinged leaf



MODELS

ES 1

ES 2

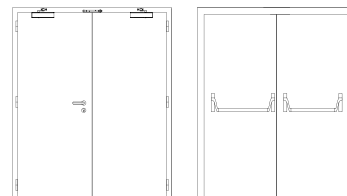
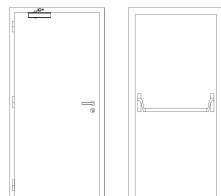
description

Hinged metal door with electro-zinc coated steel frame (1,5 mm thickness), cold-formed and construction by welding. An intumescent seal is embedded in the frame, which ensures the necessary tightness against flames and hot gases.

The leaf, with a door stop edge in all three sides of the frame, is made of two electro-zinc coated steel panels, ranging from 1 to 1,5 mm thick, and contains thermal insulating and acoustic materials according to Schröders constructive system.

The pivoting behavior of the door is ensured by two welded hinges of the system (per leaf), with a 16 mm diameter solid steel pin and movement on thrust ball bearings, allowing an opening up to 180°.

specification



model | typology

ES 1 | single hinged leaf

ES 2 | double hinged leaf

classification achieved when tested

FR integrity (EN 1634-1) ⁽¹⁾

E 60 / E 120 / E 180 / E 240

E 60 / E 120 / E 180 / E 240

radiation control (EN 1634-1) ⁽¹⁾

EW 60

EW 60

⁽¹⁾ classification according to standard EN 13501-2

dimensions (mm)

W x H (standard) ⁽²⁾

800 / 900 x 2000 / 2100

1400 / 1600 / 1800 x 2000 / 2100

W maximum

1580

3100

H maximum

3100

3100

External frame (standard)

L + 148 x H + 74

L + 148 x H + 74

other dimensions

upon request

upon request

⁽²⁾ W x H = width x height = free passage

construction

leaf thickness (mm)

68

68

leaf weight (kg/m²)

21

21

hinges (per leaf)

2

2

vision panel (mm)

Ø 350 / Ø 450 / L ≤ 800 / H ≤ 800 ⁽³⁾

Ø 350 / Ø 450 / L ≤ 800 / H ≤ 800 ⁽³⁾

finishing (standard)

electro-zinc coated steel for
painting / lacquering in standard
RAL color ⁽⁴⁾

electro-zinc coated steel for painting /
lacquering in standard RAL color ⁽⁴⁾

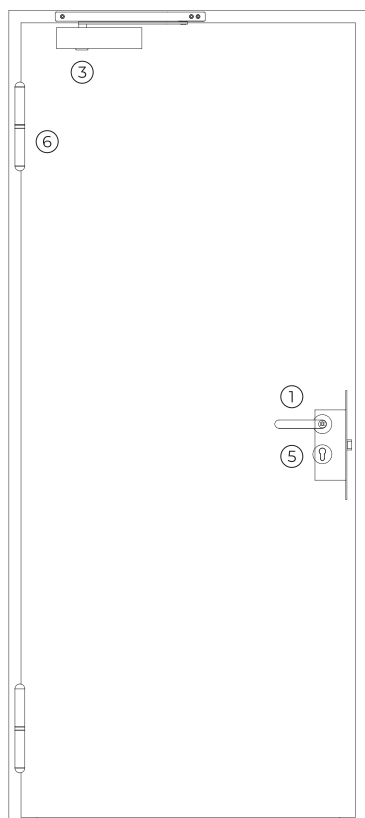
finishing (optional)

stainless/ wood veneer

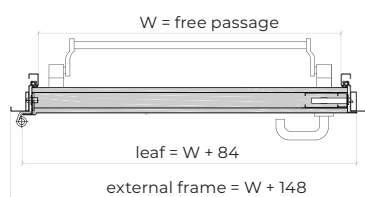
stainless/ wood veneer

⁽³⁾ minimum border dimension= 130 mm / central glazing
bar (optional)

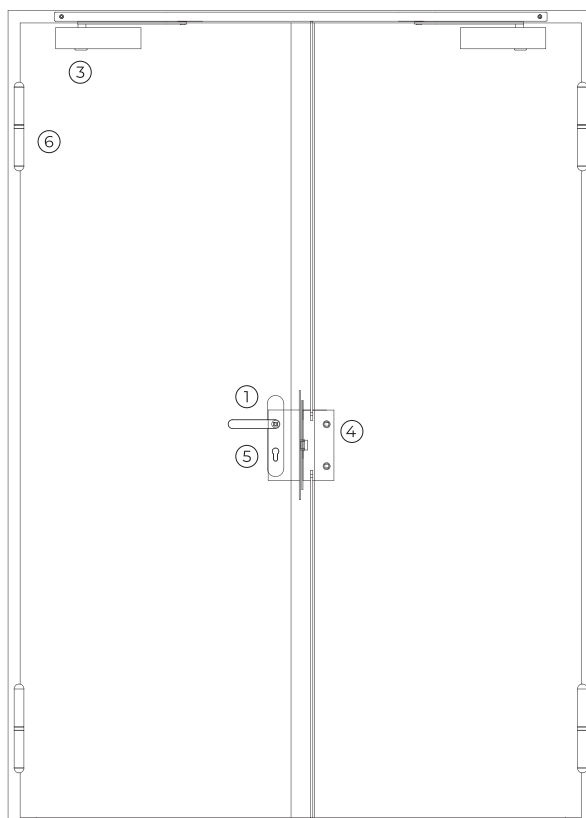
⁽⁴⁾ standard RAL colors = 7035, 7038, 9005 e 9010



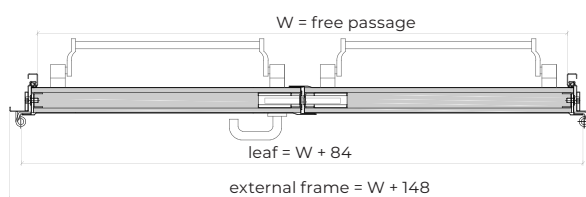
exterior view



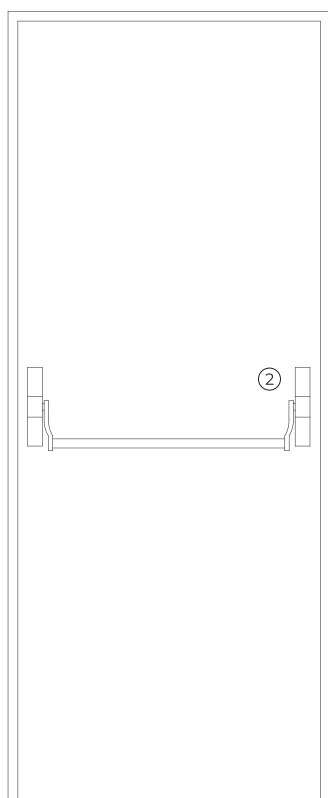
ES1



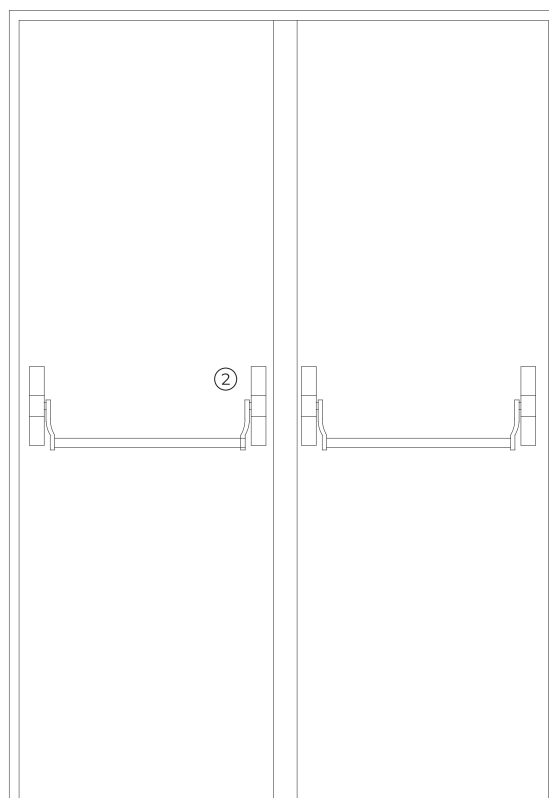
exterior view



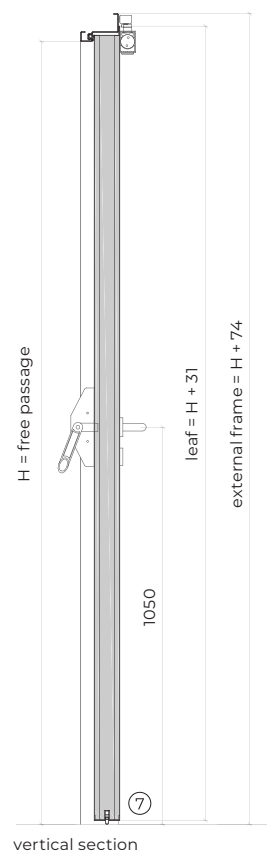
ES2



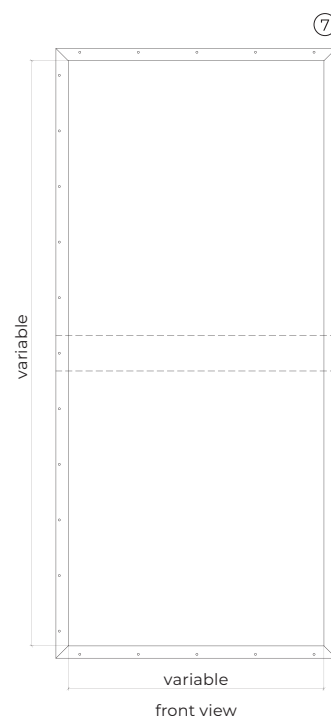
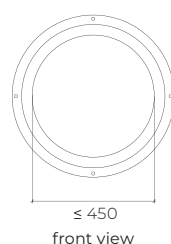
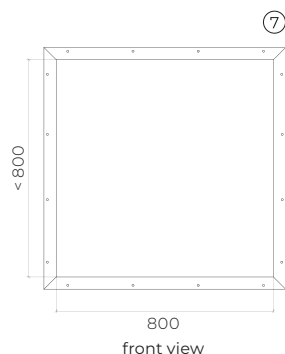
interior view



interior view



optionals



accessories and hardware

ES 1

ES 2

handle / anti-panic bar ⁽⁵⁾

- | | | |
|---|----------|--|
| 1 | standard | anti-panic lever handle with drill finished in black (standard) or stainless steel. |
| 2 | standard | anti-panic bar with gear unit, tube, cover caps and arms finished in nylon black (standard) or stainless steel alternatively, the door may be equipped with a pair of handles. |

⁽⁵⁾ alternatively, the door may be equipped with a pair of handles.

hidraulic door closer ⁽⁶⁾

- | | | | |
|---|----------|--------------------------------------|-------------------------------------|
| 3 | standard | door closer with an articulated arm. | door closers with articulated arms. |
| | optional | door closer with sliding rail. | door closer with sliding rail. |

⁽⁶⁾ with electromagnetic hold-open (optional).

lock / counter lock

- | | | | |
|---|----------|---------------------------------------|--|
| 4 | standard | anti-panic lock with 1 locking point. | anti-panic lock with 1 locking point + counter lock. |
|---|----------|---------------------------------------|--|

cylinder

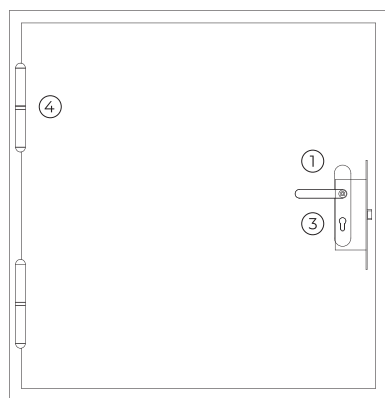
- | | | |
|---|----------|----------------------------------|
| 5 | standard | 1/2 cylinder (european profile). |
|---|----------|----------------------------------|

hinges

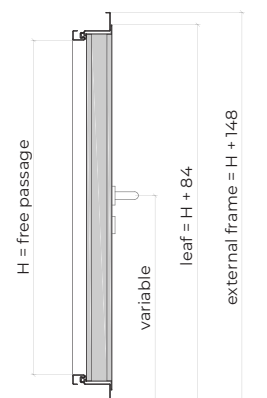
- | | | | |
|---|----------|------------------------------------|------------------------------------|
| 6 | standard | 2 exclusive hinges of this series. | 2 exclusive hinges of this series. |
|---|----------|------------------------------------|------------------------------------|

others

- | | | | |
|---|----------|-----------------------------|-----------------------------|
| 7 | optional | automatic seal. (VAS). | automatic seal.(VAS). |
| | optional | optical door viewer (180°). | optical door viewer (180°). |
| | optional | acoustic kit. | acoustic kit. |

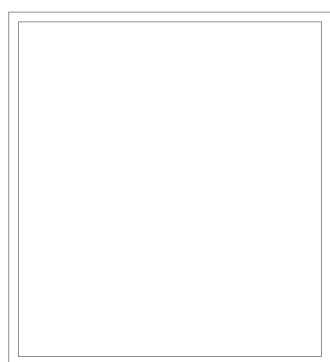
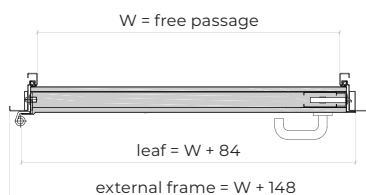


exterior view



vertical section

TRAPDOOR MODULE



interior view

accessories and hardware

handle / anti-panic bar ⁽⁷⁾

1 standard

anti-panic lever handle with drill finished in black (standard) or stainless steel.

⁽⁷⁾ alternatively, the door may be equipped with a pair of handles.

lock / counter lock

2 standard

anti-panic lock with 1 locking point.

cylinder

3 standard

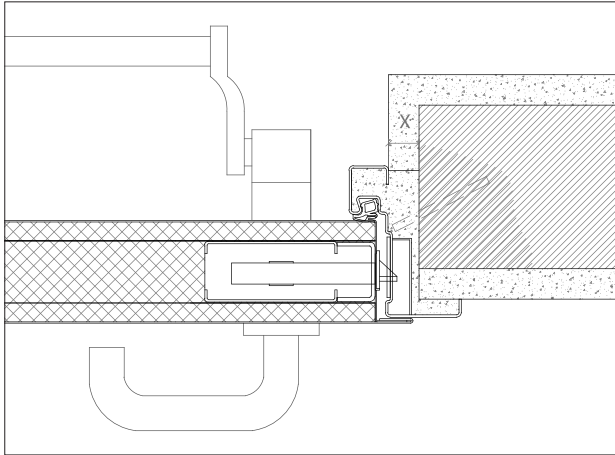
1/2 cylinder (european profile).

hinges

4 standard

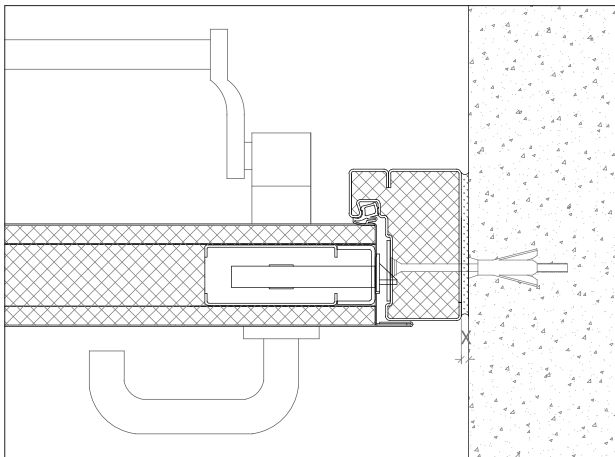
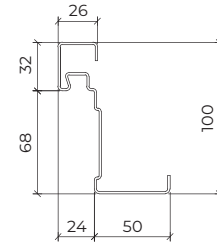
2 exclusive hinges of this series.

details



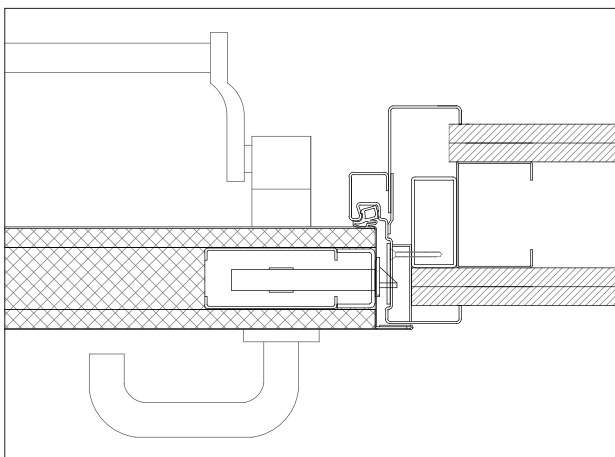
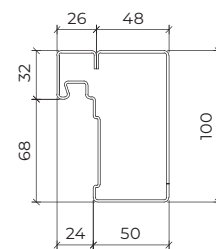
x > 20 mm (steel rod fixation)

F1 frame – standard frame | masonry wall mounting | steel rod fixation | plaster finish.



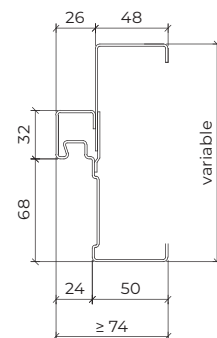
X ≥ 5 - 10mm (for fixing with metal wall plugs according to wall type)

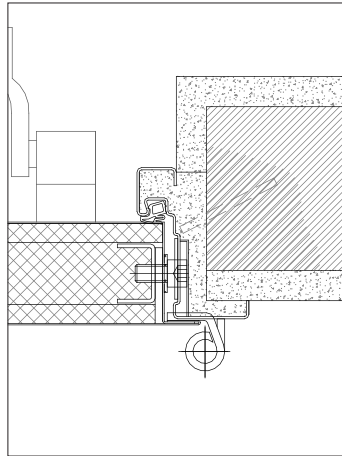
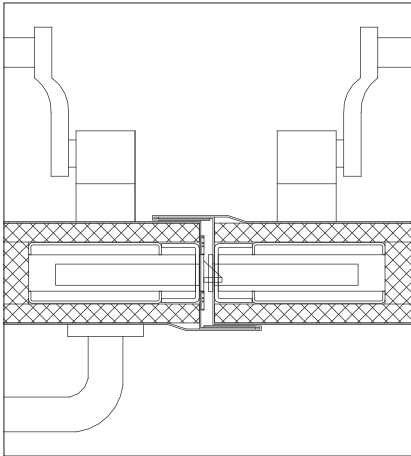
F2 frame – closed frame | concrete wall mounting | metal wall plugs fixation.



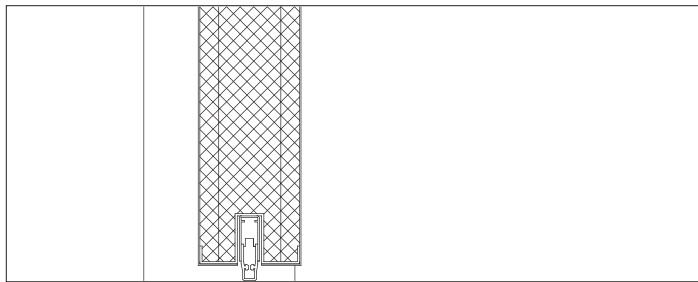
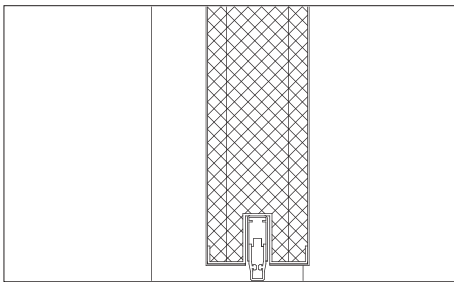
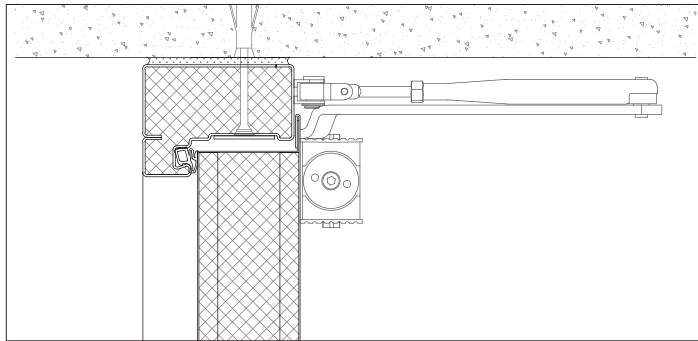
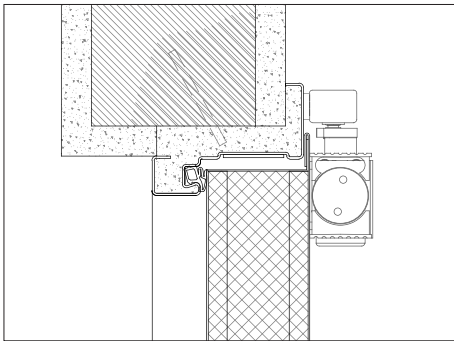
note: there are certain elements – namely intumescent and acoustic seals and / or leaf and frame fillings – shown in details, that can be suppressed depending on the technical requirements of the door.

F3 frame – frame + counter-frame | gypsum wall mounting | metal portico fixation.





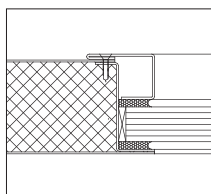
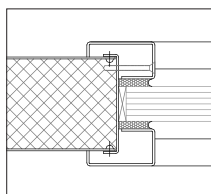
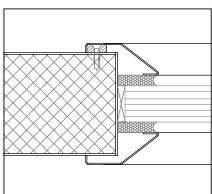
F1 frame – standard frame | masonry wall mounting | steel rod fixation | plaster finish



F1 frame – standard frame | masonry wall mounting | steel rod fixation | plaster finish | door closer with sliding rail

F1 frame – standard frame | masonry wall mounting | steel rod fixation | plaster finish | door closer with sliding rail

types of vision panels



GROUP COMPANY



TRIA SA.

Parque Ind. Manuel Lourenço Ferreira - Lt.43
3450 - 232 Mortágua, Portugal
//+351 231 927 480 //geral@tria.pt
www.tria.pt

VERS.**10.22A**