



COMPLAN

COMPLAN SERIES







MODELS

COMPLAN 1

single hinged leaf

COMPLAN 2

double hinged leaf



MODELS

COMPLAN 1

COMPLAN 2

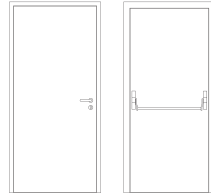
description

Hinged metal door with coplanar leaf and frame on both sides. The frame is made of bended electro-zinc coated steel profiles (2 mm thickness) welded to each other.

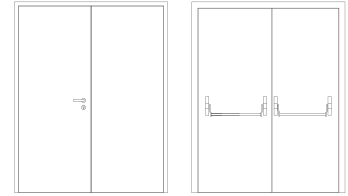
The leaf, with a door stop edge in all three sides of the frame, is made of two electro-zinc coated steel panels (1.25 mm thickness) and contains thermal insulating and acoustic materials according to the TRIA constructive system.

The use of intumescent joints ensures the necessary tightness against flames and hot gases. The pivoting behavior of the door is ensured by a concealed pivotant 90-135-3D hinge, hidden inside of the frame with three axes fine-tuning.

specification



COMPLAN 1 | single hinged leaf



COMPLAN 2 | double hinged leaf

model | typology

classification achieved when tested

FR Integrity (EN 1634-1) ⁽¹⁾	E 30 / E 45 / E 60	E 30 / E 45 / E 60
FR Integrity and insulation (EN 1634-1) ⁽¹⁾	EI ₂ 30 / EI ₂ 45 / EI ₂ 60	EI ₂ 30 / EI ₂ 45 / EI ₂ 60
acoustic (ISO 717-1) (optional)	46 dB / 47 dB	44 dB / 42 dB

⁽¹⁾ classification according to standard EN 13501-2

dimensions (mm)

W x H (standard) ⁽²⁾	800 / 900 x 2000 / 2100	1400 / 1600 / 1800 x 2000 / 2100
W maximum	917 (EI 60) / 1055 (EI 30)	1795 (EI 60) / 2064 (EI 30)
H maximum	2673 (EI 60) / 3074 (EI30)	2300 (EI 60) / 2645 (EI 30)
external frame (standard)	L + 184 x H + 92	L + 184 x H + 92
other dimensions	upon request	upon request

⁽²⁾ W x H = width x height = free passage

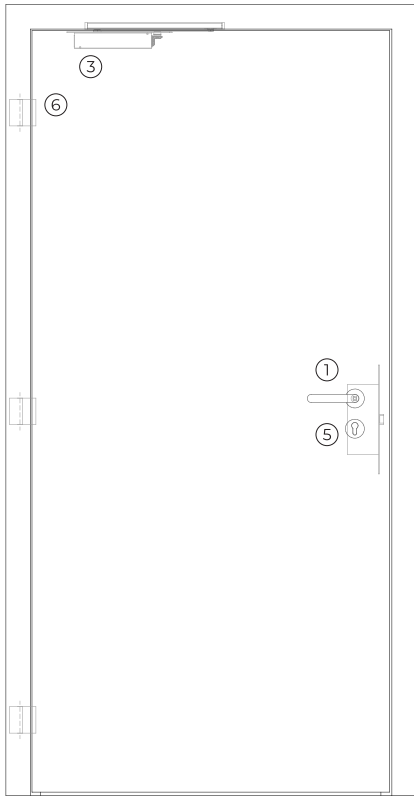
construction

leaf thickness (mm)	69	69
leaf weight (kg/m ²)	38	38
hinges (per leaf)	2 / 3 / 4 (hidden) ⁽³⁾	2 / 3 / 4 (hidden) ⁽³⁾
standard vision panel (mm)	Ø 360 ou 450 / 260 x 360 ⁽⁴⁾	N/A
finishing (standard)	steel electrocoating paint / lacquering in standard RAL color ⁽⁵⁾	steel electrocoating paint / lacquering in standard RAL color ⁽⁴⁾
finishing (optional)	stainless / wood veneer	stainless / wood veneer

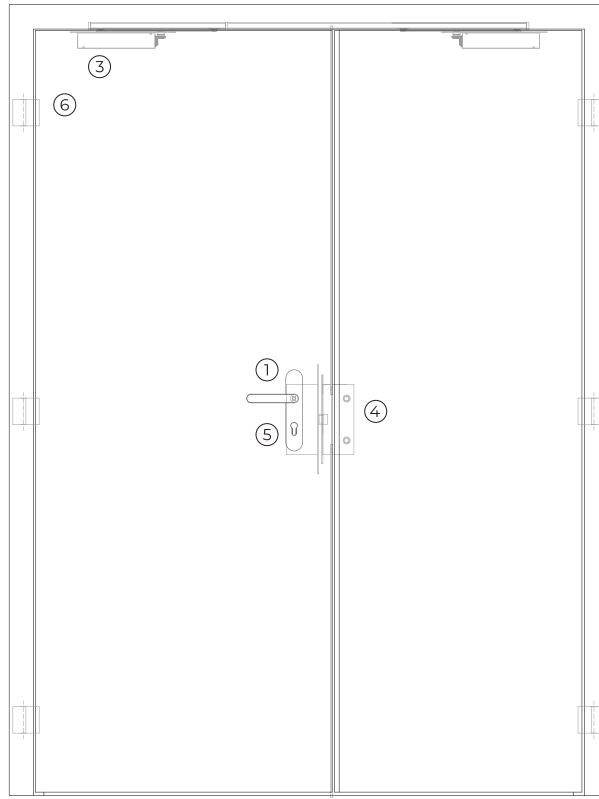
⁽³⁾ according leaf thickness

⁽⁴⁾ not applied when required acoustic requirement

⁽⁵⁾ standard RAL colors = 7035, 7038, 9005 e 9010



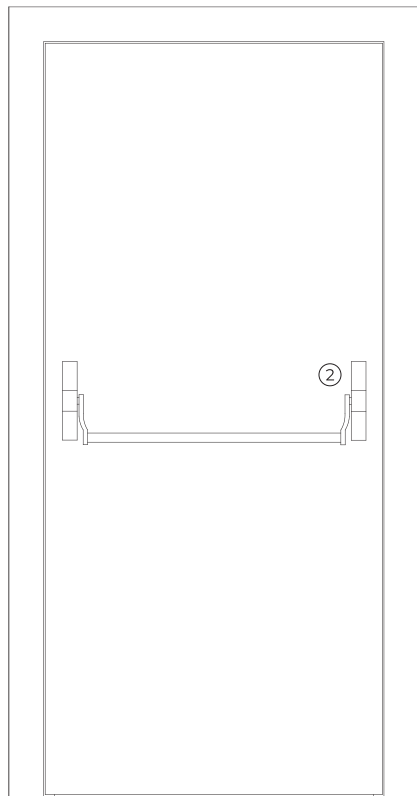
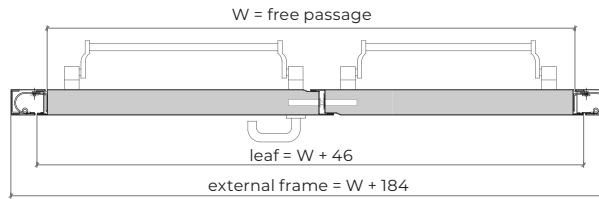
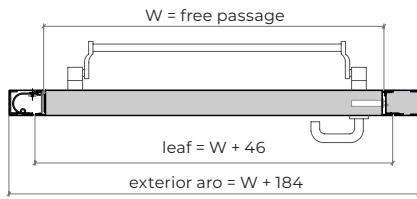
COMPLAN 1



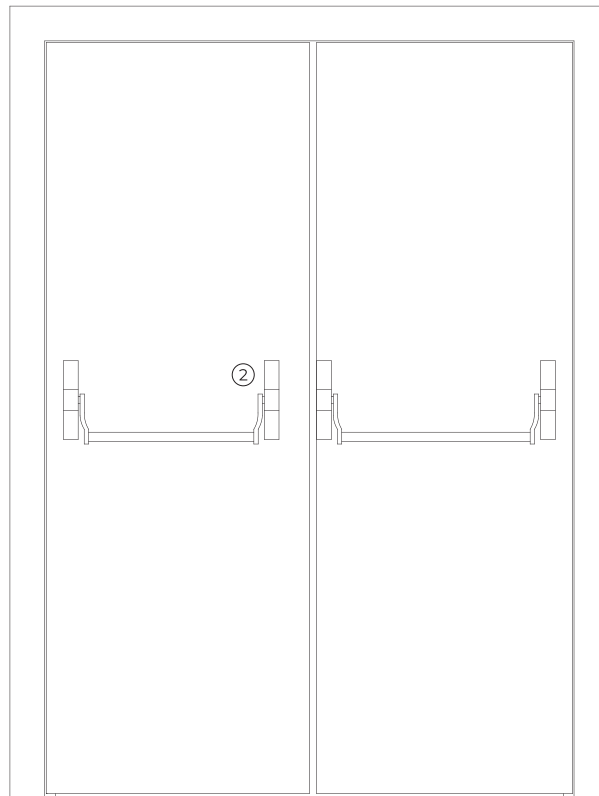
COMPLAN 2

exterior view

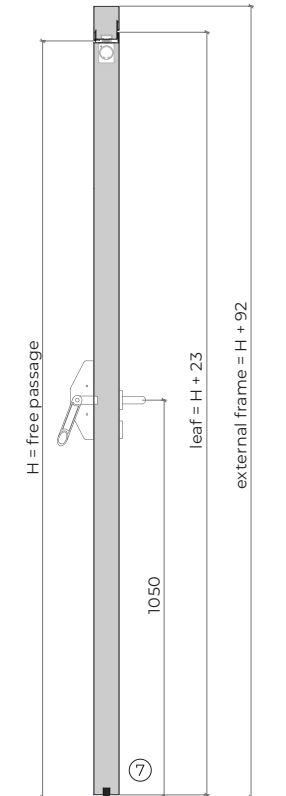
exterior view



interior view



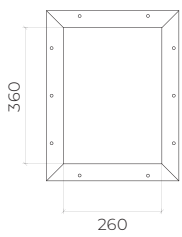
interior view



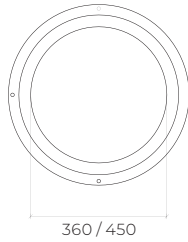
vertical section

optionals

only for model complan 1



front view



front view

accessories and hardware

COMPLAN 1

COMPLAN 2

handle / anti-panic bar ⁽⁵⁾

- | | | |
|---|----------|---|
| 1 | standard | anti-panic lever handle with drill finished in black (standard) or stainless steel. |
| 2 | standard | anti-panic bar with gear unit, tube, cover caps and arms finished in nylon black (standard) or stainless steel. |

⁽⁵⁾ alternatively, the door may be equipped with a pair of handles.

hidraulic door closer ⁽⁶⁾

- | | | | |
|---|----------|---------------------|---|
| 3 | standard | hidden door closer. | hidden door closers with closing sequence selector. |
|---|----------|---------------------|---|

⁽⁶⁾ with electromagnetic hold-open (optional)

lock / counter lock

- | | | | |
|---|----------|--|--|
| 4 | standard | anti-panic lock with 1 locking points. | anti-panic lock with 1 locking points + counter lock |
|---|----------|--|--|

cylinder

- | | | |
|---|----------|----------------------------------|
| 5 | standard | 1/2 cylinder (european profile). |
|---|----------|----------------------------------|

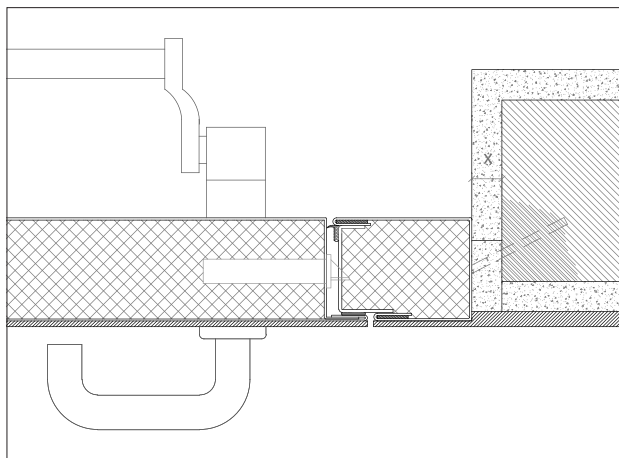
hinges

- | | | |
|---|----------|--|
| 6 | standard | up to 4 concealed pivotant 90-135-3D hinges, exclusive of the series (per leaf). |
|---|----------|--|

others

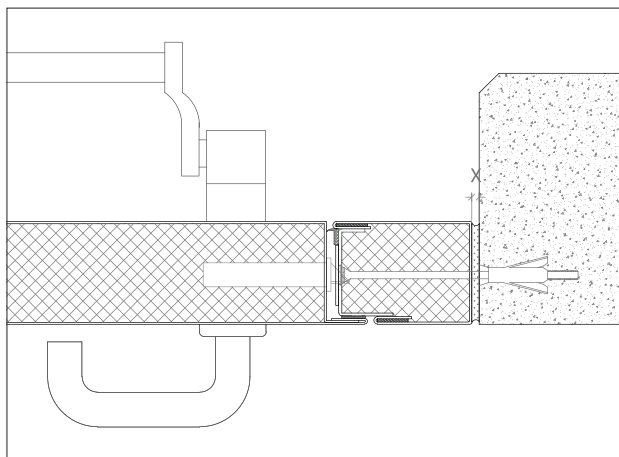
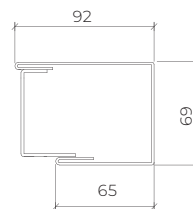
- | | |
|-----------|--|
| optionals | automatic seal.
rectangular and round vision panel. |
|-----------|--|

details



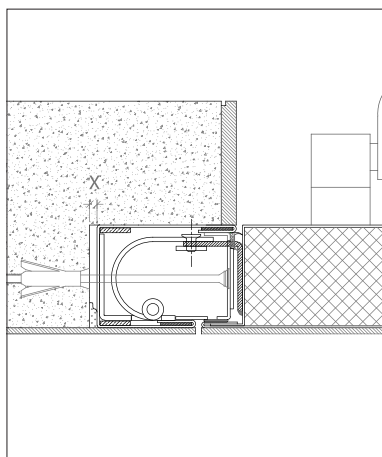
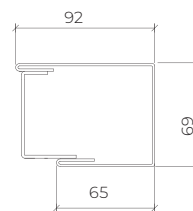
X > 20 mm (steel rod fixation)

standard frame | masonry wall mounting | steel rod fixation | plaster and wood finishes

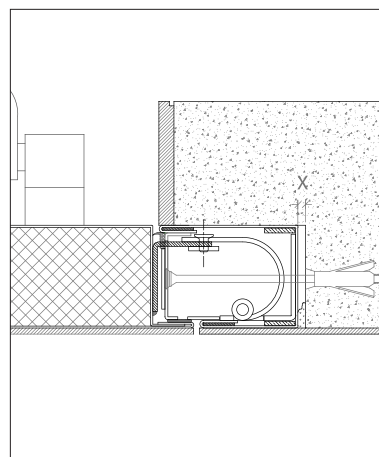
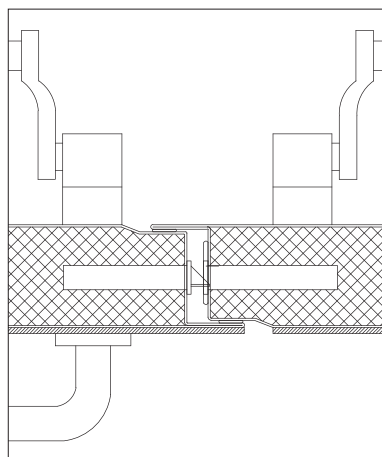


X ≥ 5 - 10mm (for fixing with metal wall plugs according to wall type)

standard frame | concrete wall mounting | metal wall plugs fixation | plaster and wood finishes

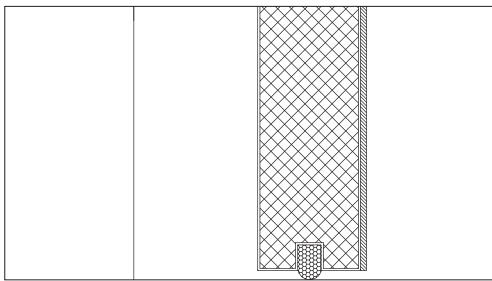
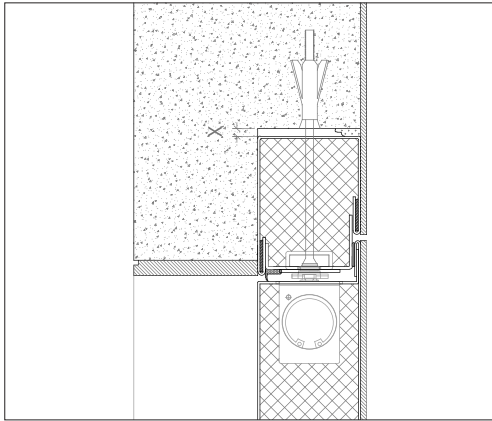


X ≥ 5 - 10mm (for fixing with metal wall plugs according to wall type)



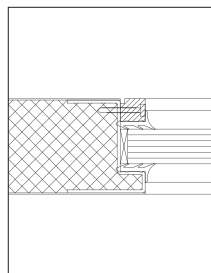
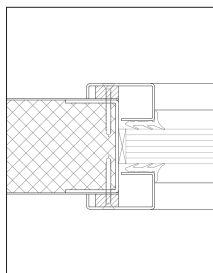
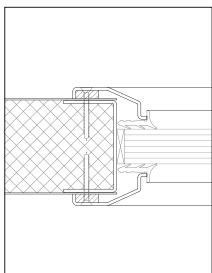
standard frame | concrete wall mounting | metal wall plugs fixation | plaster and wood finishes

note: there are certain elements – namely intumescent and acoustic seals and / or leaf and frame fillings – shown in details, that can be suppressed depending on the technical requirements of the door.

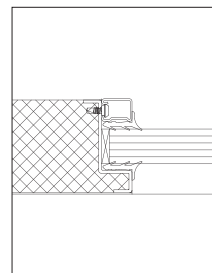


standard frame | concrete wall mounting | metal wall plugs
 fixation | plaster and wood finishes | hidden door closer

types of vision panels



exclusive solution of the series



exclusive solution of the series

GROUP COMPANY



TRIA SA.

Parque Ind. Manuel Lourenço Ferreira - Lt.43
3450 - 232 Mortágua, Portugal
//+351 231 927 480 //geral@tria.pt

www.tria.pt

VERS.10.22A