

DESCRIPTION

TRIASMOKE DA is an Automatic Smoke Curtain that in the case of fire, limits and controls the movement of smoke, with DA classification.

The curtain is composed by: fiberglass fabric with polyurethane coating on both sides seamed with high resistant kevlar wire and fixed to a steel roller of 78 mm of diameter. Galvanized steel headbox and aluminum profile bottom bar. All the system is driven by a 24 V tubular motor and controlled by an electronic board, CRM (Control and Regulation for Motor) with special *Gravity Fail Safe System*.

The control panel for automatic curtains (CBM), with a nominal input voltage of 115 V or 230 V and output voltage of 24 V.

Uninterruptible Power Supply (UPS System) with autonomy up to 6 hours exists in all control panels.

Tested and approved according to the European Standard UNE EN 12101-1 and with CE Marking.

CLASSIFICATION

DA



trias smoke da

OPERATION

The system can be activated by a SHEV, fire alarm contact, internal fire and smoke detection devices, or manual emergency buttons. In the event of a fire, the Control Panel (CBM), receives the signal alarm, and the automatic curtain deploys automatically, with controlled and safe constant speed of descent even following total power loss on all curtains. If there is a false alarm the curtains return to stand-by position automatically after reset of alarm from main Fire Management Systems.

In case of main power loss, the curtain will remain fully retracted up to 6 hours thanks to the battery back-up system.

FABRIC

The fiberglass fabric resists up to 600°C. The polyurethane coating on both sides guarantees mechanical stability when handling the fabric not only in the sewing process but also during the installation. All seams are done with high resistance Kevlar wire.

HEADBOX

Galvanized Steel headbox 1,2mm thickness with different possibilities to adapt to different architectural spaces, and maintenance requirements. Dimensions of the headbox vary depending on width and height of the curtain.

ROLLER

Galvanized Steel of 1,5 mm thickness and 78 mm diameter. Special slide system for fixing the fabric.

BOTTOM BAR

Aluminum profile RAL 9003 white painted of 1,8 mm thickness.

ELECTRIC MOTOR

Tubular motor: 24 V.
Maximum power: 24 W / 18 Nm.
Maximum current: 3 A.
Average linear speed: 0.10 m/s to 0.15 m/s.

CRM MOTOR REGULATION BOX

Polyester box IP56 with an electronic board inside to control the movement of the motor.
Dimensions (W x H x D): 120 x 160 x 75 mm.

CBM CONTROL PANEL

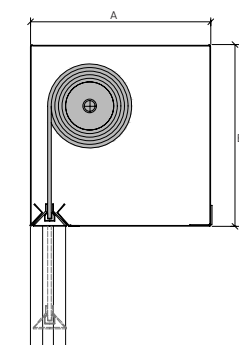
Receives the signal alarm from the Fire Management System and controls the movement of curtains. Visual and acoustic alert system.
Dimensions (W x H x D): from 300 x 230 x 140 mm to 400 x 400 x 210 mm.
Input: 115 or 230 V 50Hz.
Output: 24 V.
Battery: 2 x 12 V 7,5 Ah rechargeable (up to 6 hours autonomy), 2 x 12 V 1.3 Ah rechargeable (up to 1 hour autonomy).
Maximum capacity: up to 12 motors.

OPTIONAL EXTRAS

RAL coating: headbox, side guides, bottom bar and false ceiling extra accessories.
Stainless steel elements: headbox, screws, rivets.
Headbox: customized set-up for specific architectural or special operational requirements.
False ceiling accessories: aluminum profile painted RAL 9003 to hide headbox over false ceiling.
CBM control panel: special designs up to 48 motors in one control panel, additional information output, micro switches, communication with other devices, special battery backup, possibility of delaying curtain deployment.
Escape button: pushing this button the curtain goes up and the user can escape through the opening, the curtain deploys 30s later automatically.
Emergency button: pushing this button the curtain deploys immediately.

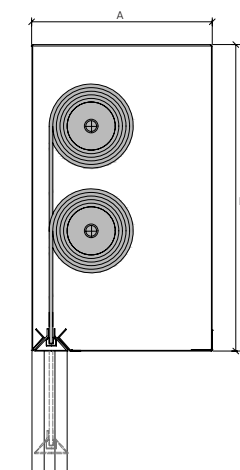
Note: other requirements and customized solutions on demand.

HEADBOX



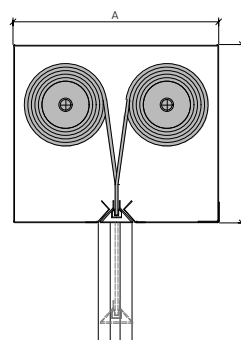
SINGLE ROLLER

A: 180-260 mm
B: 180-260 mm



MULTI ROLLER VERTICAL

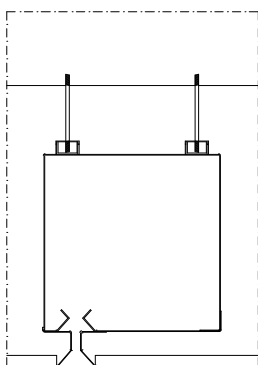
A: 190-270 mm
B: 300-500 mm



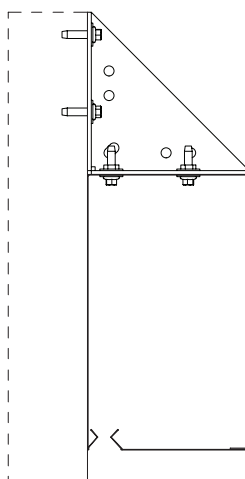
MULTI ROLLER HORIZONTAL

A: 250-400 mm
B: 170-260 mm

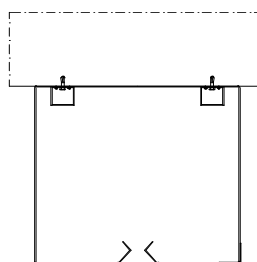
HEADBOX FIXING



HANGING FALSE CEILING

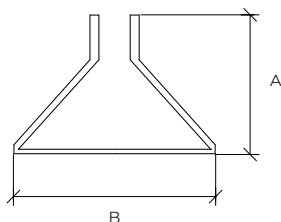


WALL



TOP CEILING

BOTTOM BAR



ALUMINUM

A: 33 mm
B: 48 mm

