

DESCRIPTION

BACHFIRE H is a Horizontal Automatic Fire Curtain that in the case of fire, limits and controls the fire, with classification EW 60.

The curtain is composed of fibreglass fabric with polyurethane coating on both sides seamed with reinforced steel wire and fixed to two steel rollers of 78 mm in diameter. Galvanized steel elements such as headbox, side guides and bottom bar.

The entire system is driven at least by two 24 V tubular motors, on opposite sides. The control panel for automatic curtains (CBM), has a nominal input voltage of 115 V or 220 V and an output voltage of 24 V.

Uninterruptible Power Supply (UPS System) with an autonomy of up to 6 hours available in all control panels.

Tested in accordance with EN 1634-1 and classified in accordance with EN 13501-2.

CLASSIFICATION

E 120

EW 30

EW 60



OPERATION

The system can be activated by a SHEV, fire alarm contact, internal fire and smoke detection devices, or manual emergency buttons. In the event of a fire, the Control Panel (CBM), receives the signal alarm, and the automatic curtain deploys automatically, at a constant speed. If there is a false alarm the curtains return to the stand-by position automatically after resetting the alarm from the main Fire Management Systems. In case of main power loss, the curtain will remain fully retracted thanks to the battery backup system.

FABRIC

The fibreglass fabric resists up to 1100°C. The polyurethane coating on both sides guarantees mechanical stability when handling the fabric not only in the sewing process but also during the installation. All seams are done with reinforced stainless steel wires with a coating of Kevlar.

HEADBOX

Galvanized Steel headbox 1.2 mm thickness with different possibilities to adapt to different architectural spaces, and maintenance requirements. Dimensions of the headbox vary depending on the width and height of the curtain.

SIDE GUIDES

Galvanized Steel from 1.5 to 3 mm thickness and different dimensions depending on width and height of the curtain.

ROLLER

Galvanized Steel of 1.5 mm thickness and 78 mm diameter. Special slide system for fixing the fabric.

BOTTOM BAR

Galvanized Steel of 1.5 mm thickness.

ELECTRIC MOTOR

Tubular motor: 24 V.
Maximum power: 24 W/ 18.5 Nm.
Average linear speed: 0,10 m/s to 0,15 m/s.

CRM MOTOR REGULATION BOX

Polyester box IP56 with an electronic board inside to control the movement of the motor.
Dimensions (WxHxD): 120 x 160 x 75 mm.

CBM CONTROL PANEL

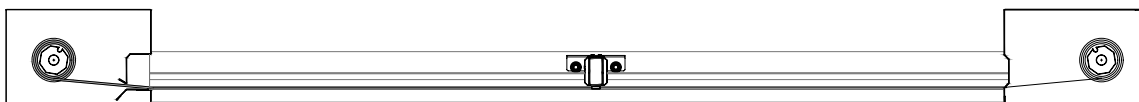
Receives the signal alarm from the Fire Management System and controls the movement of curtains. Visual and acoustic alert system.
Dimensions (WxHxD): from 300 x 300 x 210 mm to 400 x 400 x 210 mm.
Input: 115 or 220 V 50Hz.
Output: 24 V.
Battery: 2 x 12 V 7.5 Ah rechargeable (up to 6 hours autonomy).

OPTIONAL EXTRAS

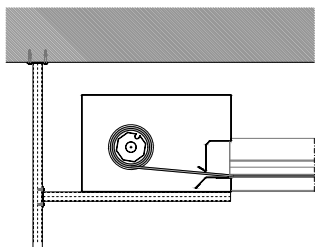
RAL coating: headbox, side guides, bottom bar.
Stainless steel elements: headbox, side guides, bottom bar, screws, rivets.
Headbox: customized set-up for specific architectural or special operational requirements.
Side guides: customized set-up for specific architectural or special operational requirements.
Electric motor: special 24 V motors up to 80 Nm without CRM. Special 230 V motors up to 120 Nm without CRM.
CBM control panel: special design in one control panel, additional information output, micro switches, communication with other devices, special battery back-up, possibility of delaying curtain deployment.

***Note:** other requirements and customized solutions on demand.*

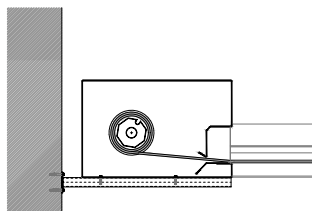
SECTION



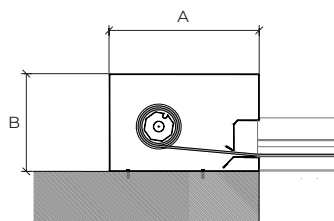
HEADBOX INSTALLATION



TOP CEILING



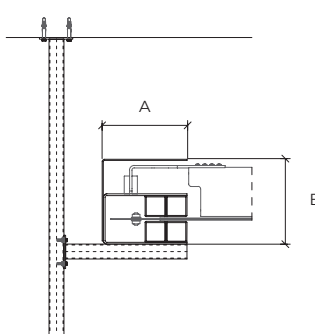
HORIZONTAL



WALL

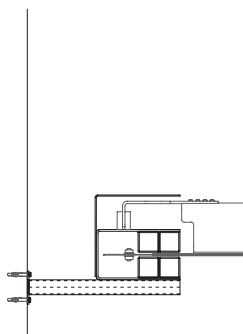
A: 400 mm
B: 260 mm

SIDE GUIDE INSTALLATION

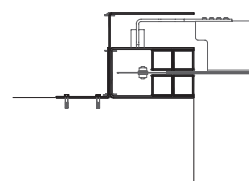


TOP CEILING

A: 140 mm
B: 140 mm

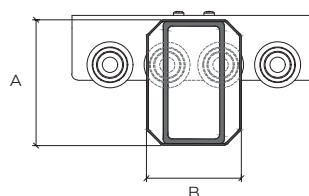
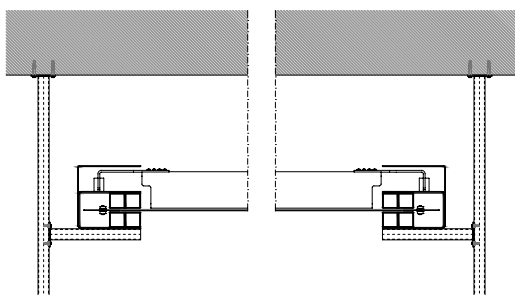


HORIZONTAL

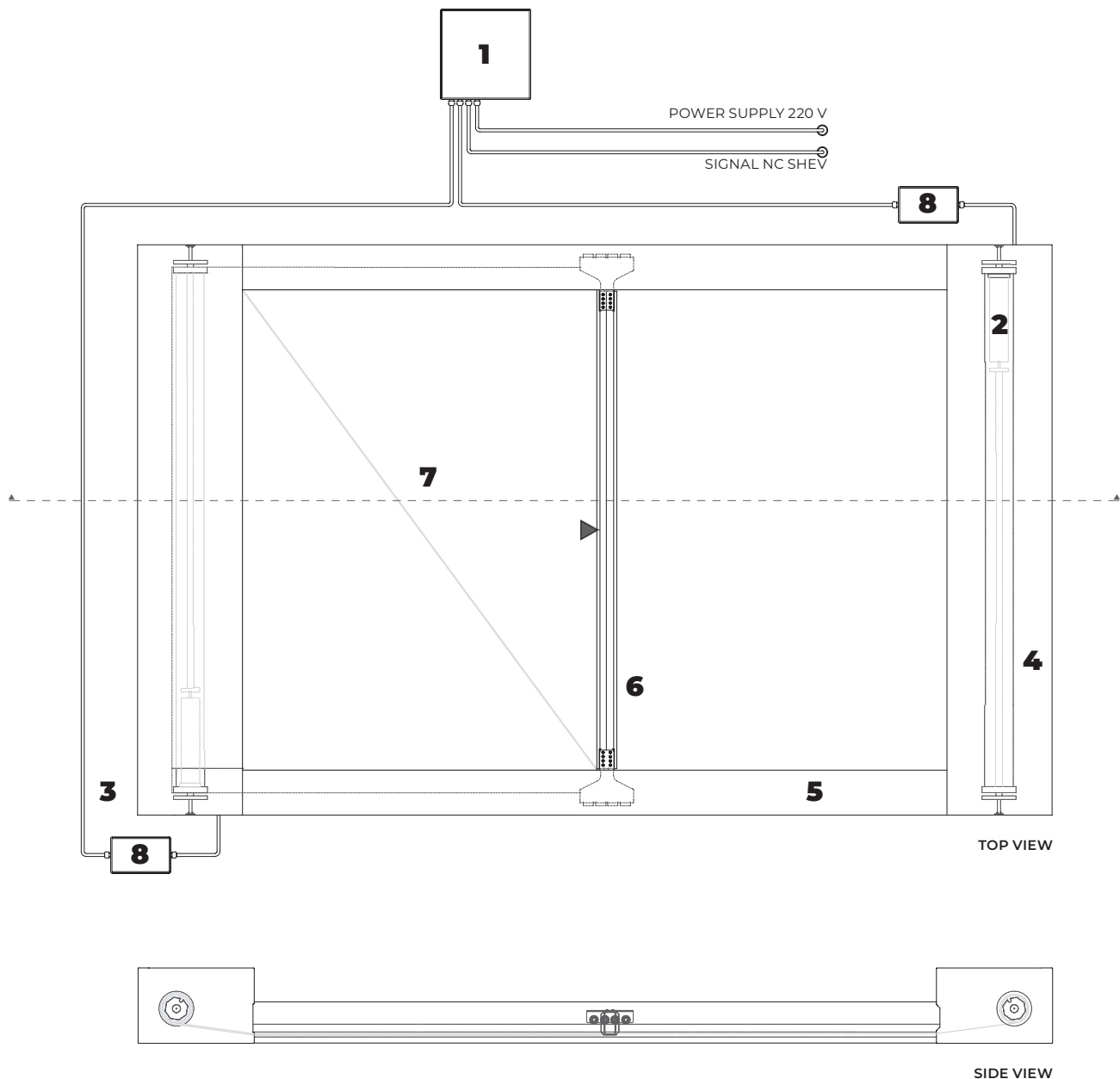


WALL

COUNTERWEIGHT



A: 82 mm
B: 62 mm



- | | |
|-----------------------------|---------------------------------|
| 1. control panel CBM | 5. galvanised steel side guides |
| 2. tubular motor 24 V | 6. galvanised steel bottom bar |
| 3. galvanised steel headbox | 7. fire resistant fabric |
| 4. galvanised steel roller | 8. CRM - motor regulation box |