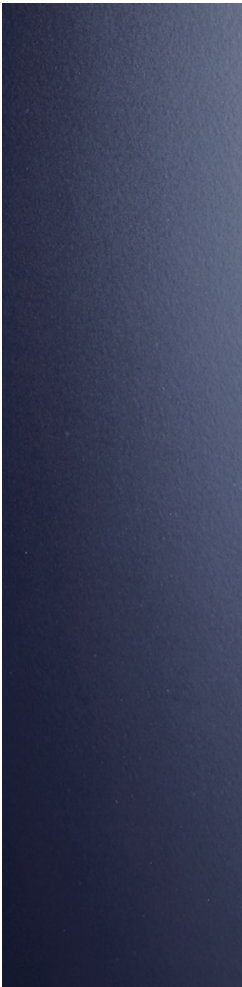




AB 1 & AB 2

AB SERIES







MODELS

AB1

single hinged leaf

AB2

double hinged leaf



MODELS

AB1

AB2

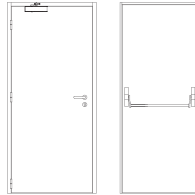
description

Hinged metal door with the frame made of bended electro-zinc coated steel profiles (2 mm thickness) welded to each other. When the door is closed, the hinges side of the leaf will fully nest (from top to bottom) into the frame.

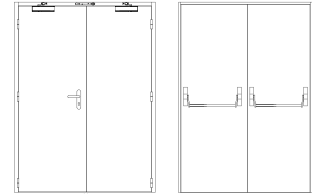
The leaf is made of two electro-zinc coated steel panels (1.5 mm thickness) and contains thermal insulating and bulletproof materials. An automatic seal may be incorporated on leaf's bottom, if necessary.

The pivoting behavior of the door is ensured by three hinges of this series.

specification



AB 1 | single hinged leaf



AB 2 | double hinged leaf

model | typology

classification achieved when tested

ballistic resistance (EN 1523)

FB4 NS

FB4 NS

dimensions (mm)

W x H (standard) ⁽³⁾

800 / 900 x 2025 / 2100

1400 / 1600 / 1800 x 2025 / 2100

W maximum

1200

2400

H maximum

2970

2970

external frame (standard)

L + 143 x H + 62

L + 143 x H + 62

other dimensions

upon request

upon request

⁽³⁾ W x H = width x height = free passage

construction

leaf thickness (mm)

69

69

leaf weight (kg / m²)

70

70

hinges (per leaf)

3

3

standard vision panel (mm)

300 x 400 / 500 x 500

300 x 400 / 500 x 500

finishing (standard)

steel electrocoating paint /
lacquering in standard
RAL color ⁽⁴⁾

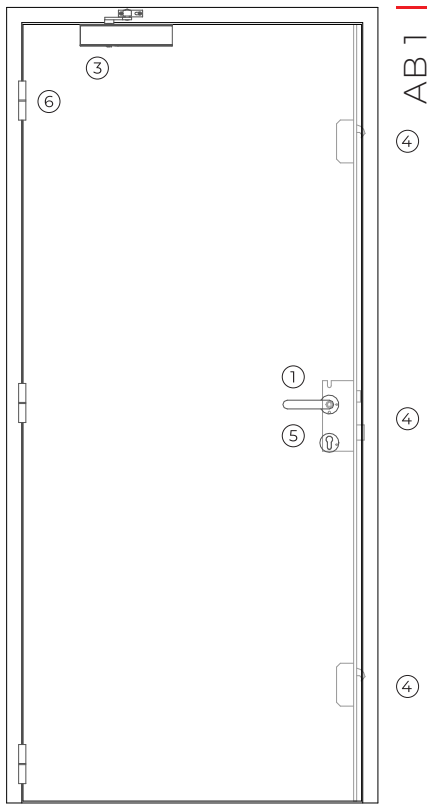
steel electrocoating paint /
lacquering in standard
RAL color ⁽⁴⁾

finishing (optional)

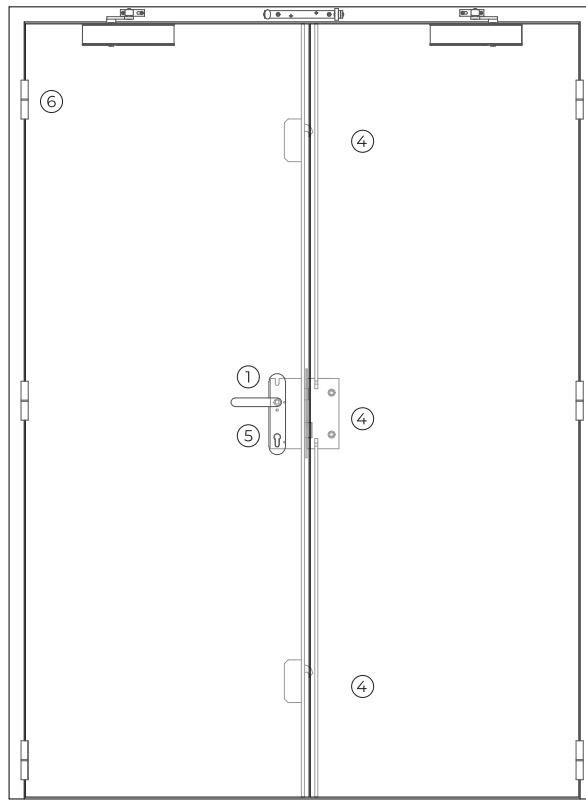
stainless steel/ wood veneer

stainless steel/ wood veneer

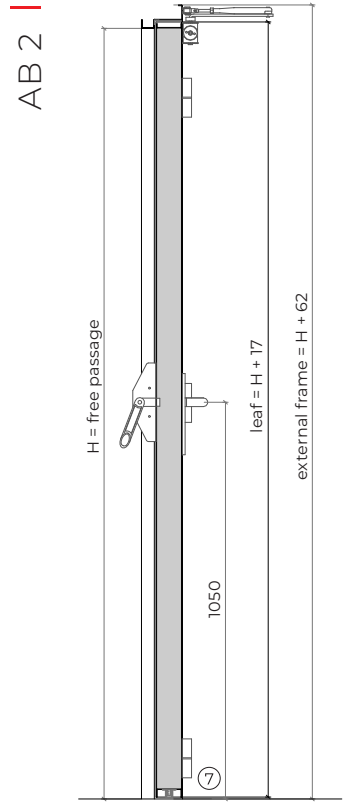
⁽⁴⁾ standard RAL colors= 7035, 7038, 9005 e 9010



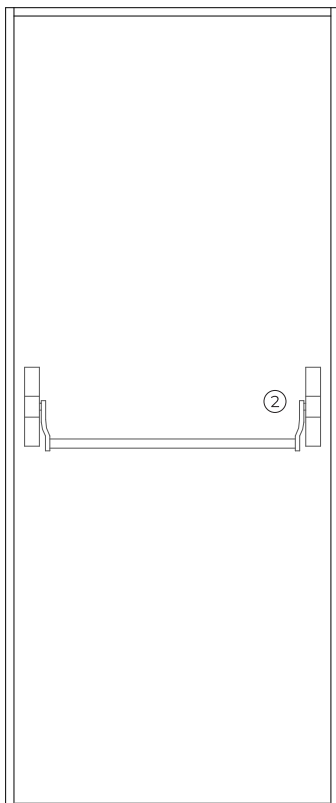
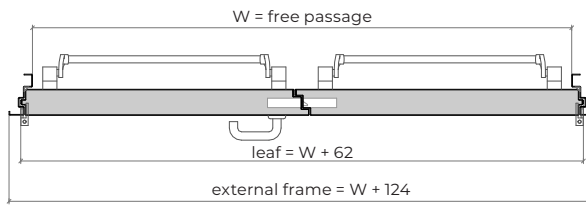
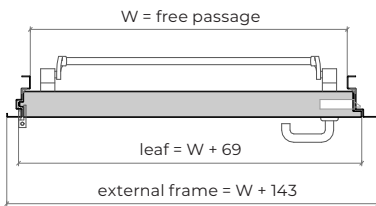
exterior view



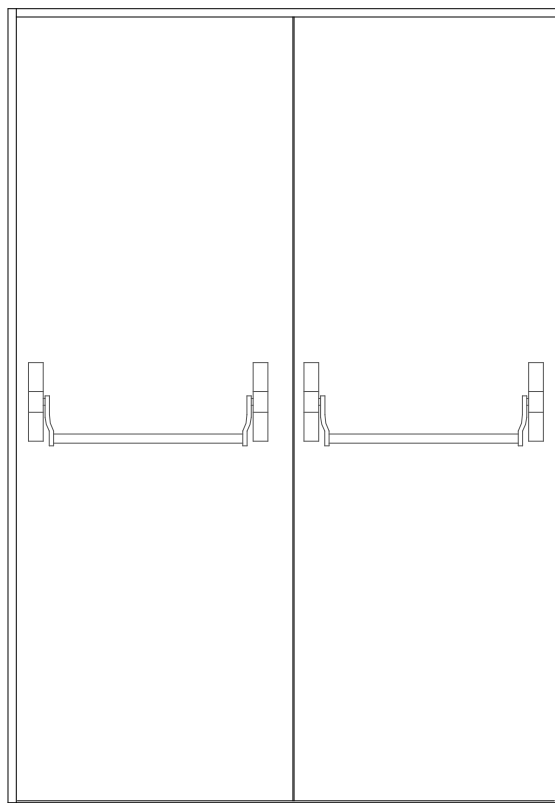
exterior view



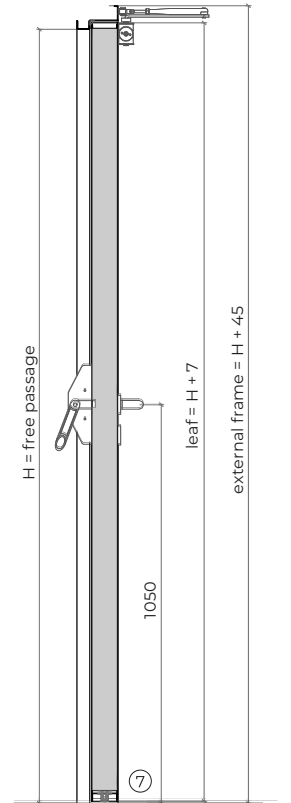
vertical section model AB 2



interior view

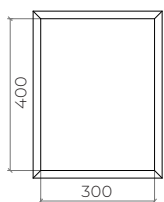


interior view

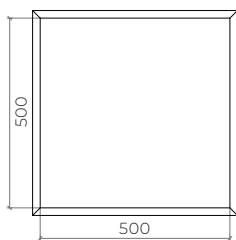


vertical section model AB 1

optionals



front view



front view

accessories and hardware

AB 1

AB 2

handle / anti-panic bar ⁽⁴⁾

- | | | | |
|---|----------|---|--|
| 1 | standard | anti-panic lever handle with drill finished in black (standard) or stainless steel. | |
| 2 | standard | anti-panic bar with gear unit, tube, cover caps and arms finished in nylon black (standard) or stainless steel. | |

⁽⁴⁾ alternatively, the door may be equipped with a pair of handles.

hydraulic door closer ⁽⁵⁾

- | | | | |
|---|----------|--------------------------------------|--|
| 3 | standard | door closer with an articulated arm. | door closers with articulated arms + closing sequence selector. |
| | optional | door closer with sliding rail. | door closers with sliding rail and closing sequence selector included. |
| | optional | hidden door closer. | hidden door closers with closing sequence selector. |

⁽⁵⁾ with electromagnetic hold-open (optional).

lock / counter lock

- | | | | |
|---|----------|--|---|
| 4 | standard | anti-panic lock with 3 locking points. | anti-panic lock with 3 locking points + counter lock. |
| | optional | anti-panic lock with 1 locking point. | anti-panic lock with 1 locking point + counter lock. |

cylinder

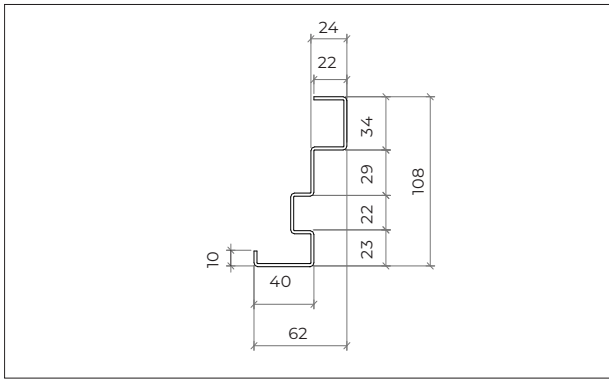
- | | | | |
|---|----------|----------------------------------|--|
| 5 | standard | 1/2 cylinder (european profile). | |
|---|----------|----------------------------------|--|

hinges

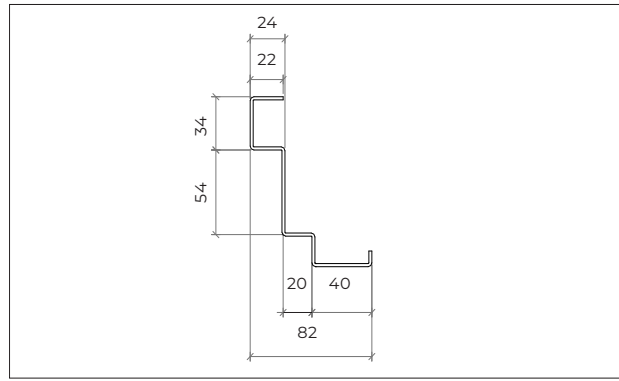
- | | | | |
|---|----------|------------------------------------|---|
| 6 | standard | 3 exclusive hinges of this series. | 3 exclusive hinges of this series (per leaf). |
|---|----------|------------------------------------|---|

others

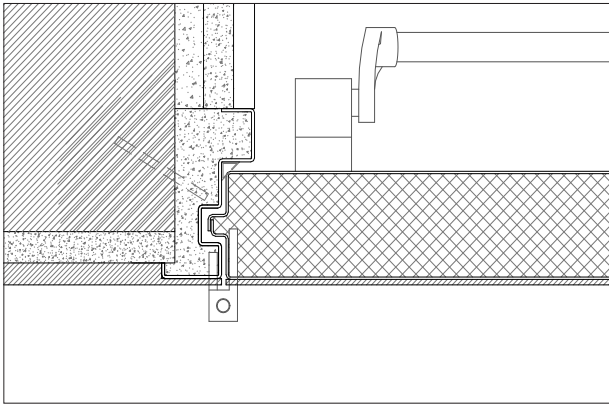
- | | | | |
|---|----------|--------------------------------------|--|
| 7 | optional | automatic seal. | |
| | optional | square and rectangular vision panel. | |



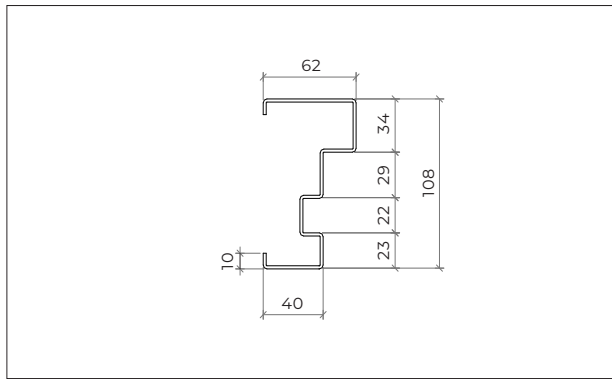
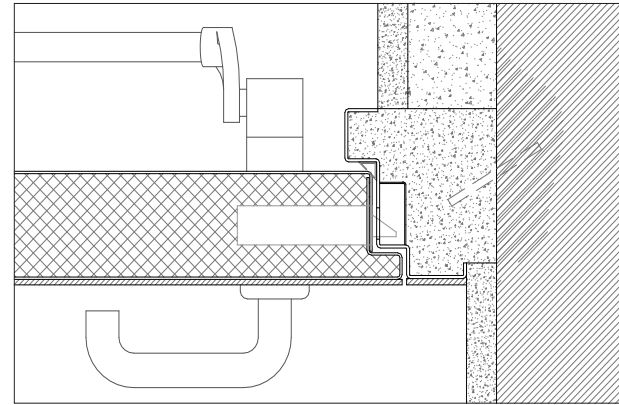
standard frame (hinges side)



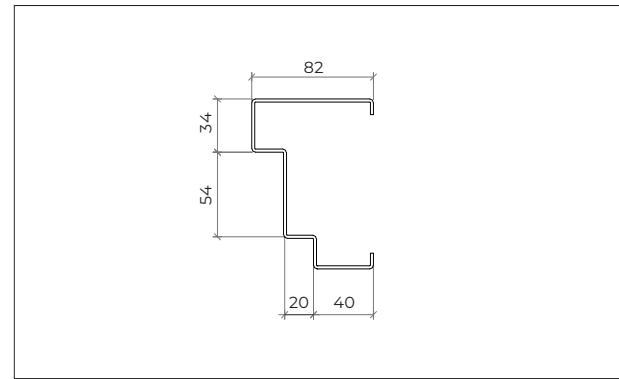
standard frame (lock side)



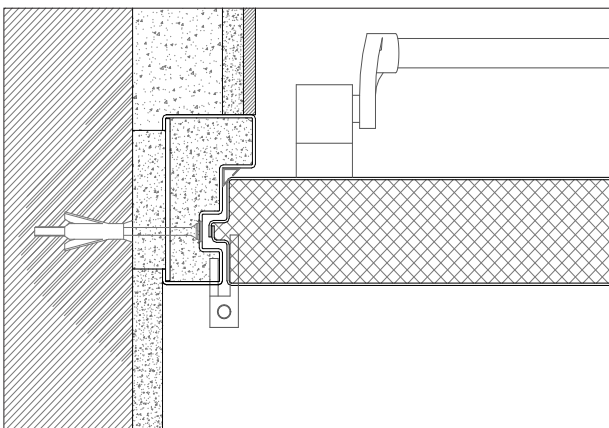
standard frame | masonry wall mounting | steel rod fixation | plaster finish



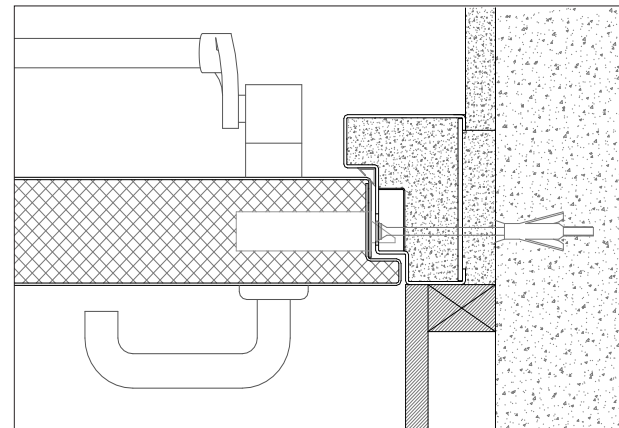
standard frame (hinges side)

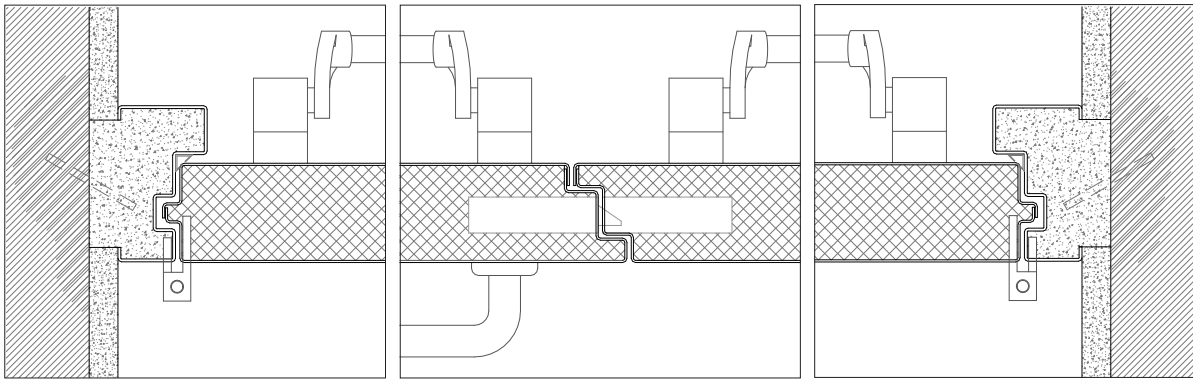


standard frame (lock side)

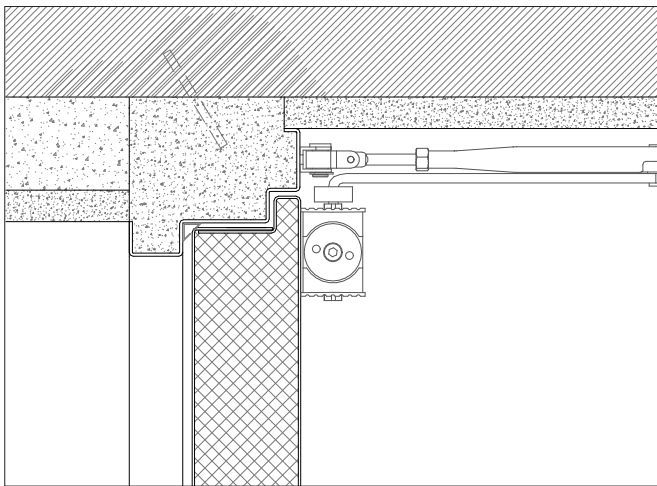


modified frame | masonry or concrete wall mounting | metal wall plugs fixation | plaster and metal finishes

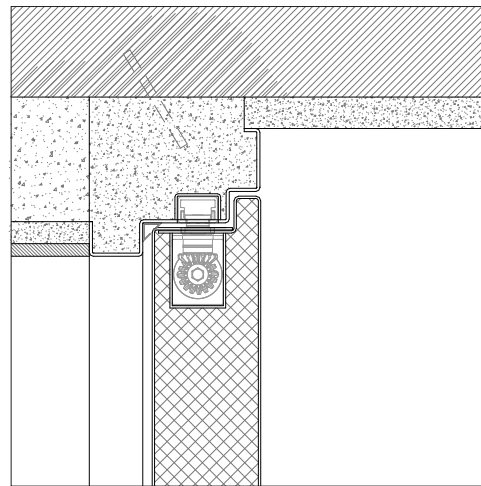




modified frame | masonry wall mounting | steel rod fixation | plaster finish

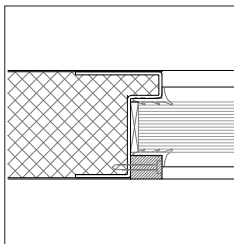


standard frame | masonry wall mounting | steel rod fixation | plaster finish | door closer with an articulated arm



modified frame | masonry wall mounting | steel rod fixation | plaster finish | hidden door closer

types of vision panels



exclusive solution of the series

GROUP COMPANY



TRIA SA.

Parque Ind. Manuel Lourenço Ferreira - Lt.43
3450 - 232 Mortágua, Portugal
//+351 231 927 480 //geral@tria.pt

www.tria.pt

VERS.10.22A