

## CARACTERÍSTICAS DO PRODUTO

TRILIGHT é um sistema de fachada certificado com CE.

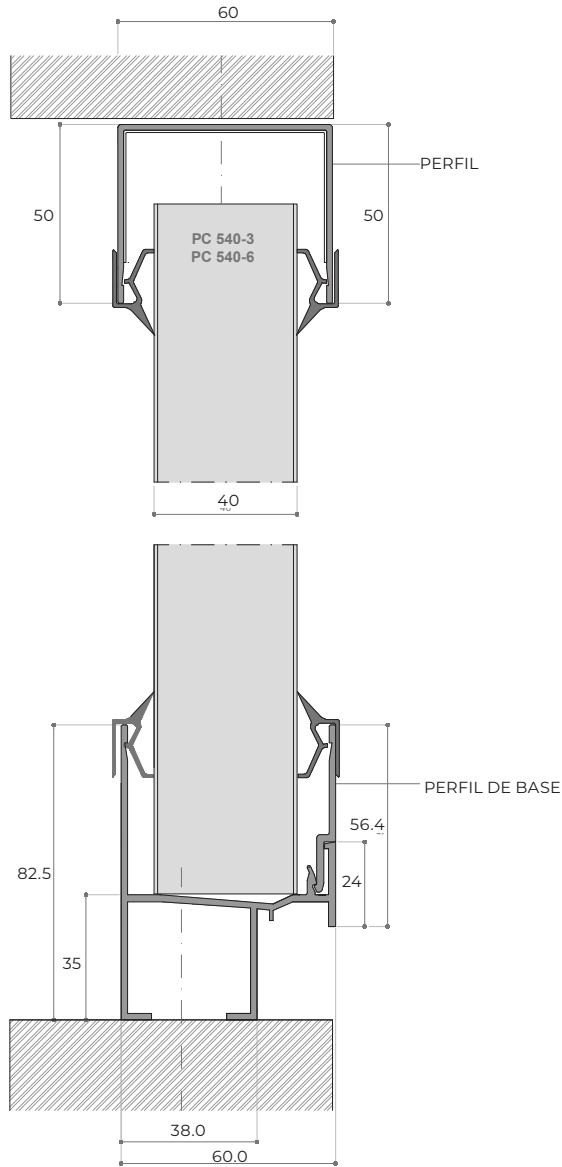




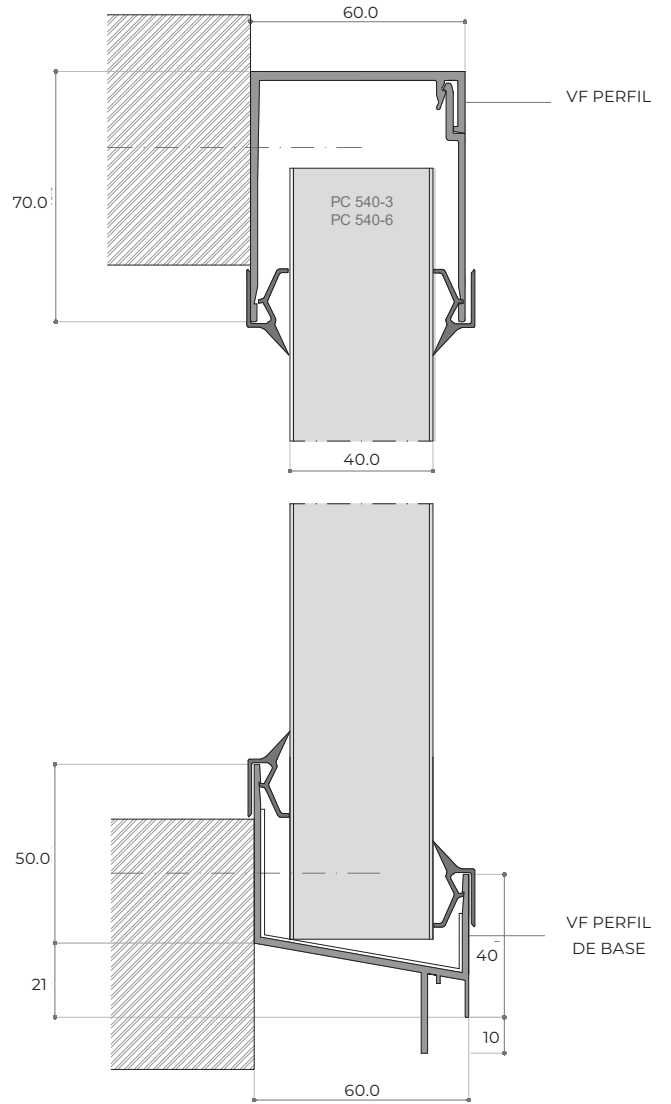
# trilight

	PC216	ARCOPLUS 625	PC 540-3	PC 540-7	PC 560-11
<b>LARGURA COBERTA</b> (mm)	200	667	500	500	500
<b>DIMENSÕES</b> (mm)	210 X 16	683 X 20	525 X 40	252 X 40	525 X 60
<b>ISOLAMENTO TÉRMICO</b> (W/m <sup>2</sup> K)	2,7	1,7	1,7	1,1	0,80/0,82
<b>ISOLAMENTO ACÚSTICO</b> (dB) DIN 52210	16	16	21	21	22
<b>GAMA DE CORES</b> (STANDARD)	CRISTALL, BRONZE, OPAL		CRISTALL, OPAL		
<b>TRANSMISSÃO LUMINOSA</b> (%)	65-35	60-35	58-30	56-30	54-28
<b>CLASSIFICAÇÃO CORTA FOGO</b> (EN ISO 1350-1-1)			B-S1, D0		
<b>CLASSIFICAÇÃO CE</b>	+	+	+	+	+

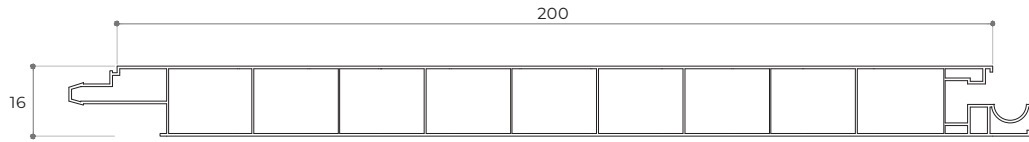
**SISTEMA DE FACHADA EM CORTINA, SEM RUTURA TÉRMICA**  
PAINÉIS COM 40 mm DE ESPESSURA



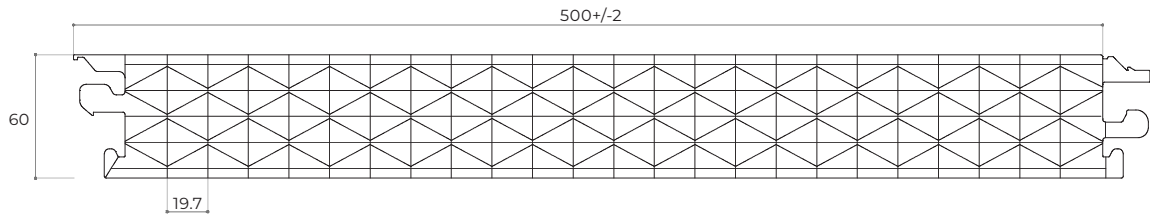
**SISTEMA DE FACHADA EM CORTINA À FACE, SEM RUTURA TÉRMICA**  
PAINÉIS COM 40 mm DE ESPESSURA



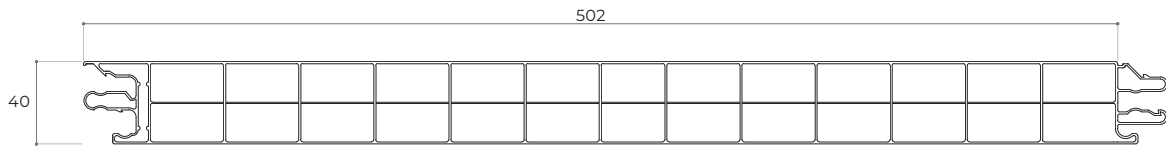
**PC 216**



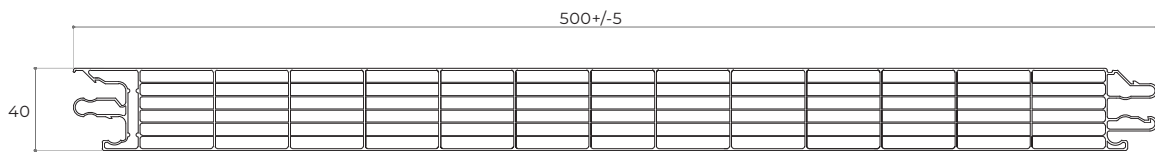
**PC 560-11**



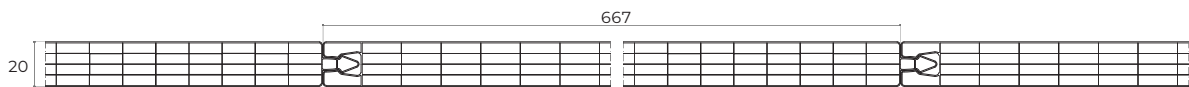
**PC 540-3**



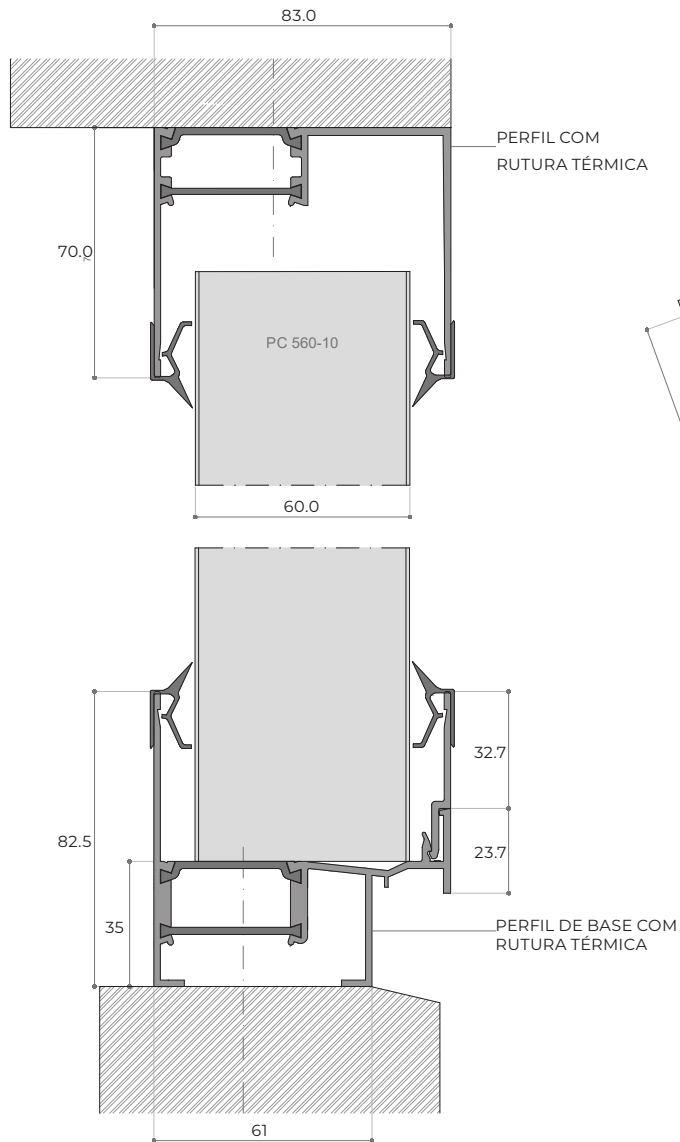
**PC 540-7**



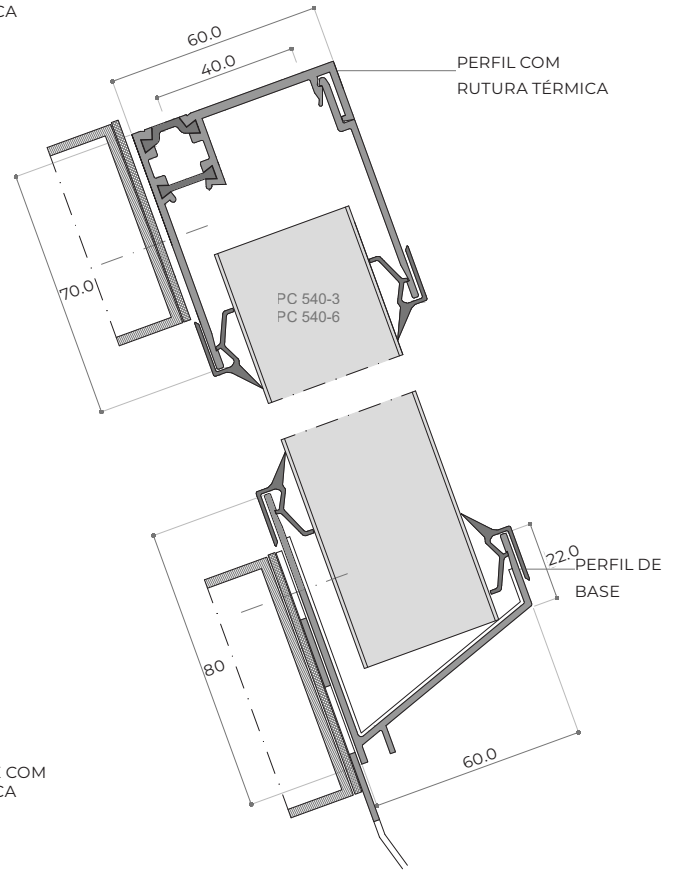
**ARCOPLUS 625**



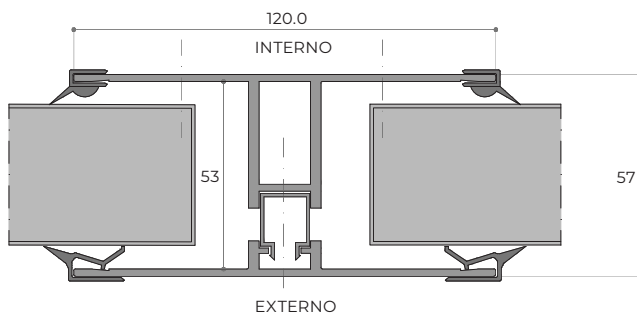
**FACHADA EM CORTINA  
COM RUTURA TÉRMICA**  
PAINÉIS COM 60 mm DE ESPESSURA



**SISTEMA DE COBERTURA  
INCLINADA, COM RUTURA TÉRMICA**  
PAINÉIS COM 40 mm DE ESPESSURA COM  
INCLINAÇÃO > 25°



**PERFIL H EM ALUMÍNIO**  
PAINÉIS COM 40 mm DE ESPESSURA



**PERFIL ESTRUTURAL EM ALUMÍNIO**  
PAINÉIS COM 40 mm DE ESPESSURA

