

Fire Stopping Compartmentation Systems

FLAMOCOL WEL



TRIA

description

FLAMOCOL WEL is designed and tested to seal service penetration apertures containing plastic and metallic pipes with insulation, using thermoplastic composites based on graphite intumescent technology. Developed to provide a high volume expansion and pressure seal during a fire the FLAMOCOL WEL offers EI120 tested to EN1366-3, the maximum diameter being 250mm, the ultra thin design of FLAMOCOL WEL ensuring that they can be installed in to the tightest of locations. FLAMOCOL WEL is installed around combustible pipes to form a penetration seal used to reinstate the fire resistance performance of wall and floor constructions where they have been provided with apertures for the penetration of combustible pipe services. FLAMOCOL WEL can be used with Flamocoustic Sealant to seal the space between the combustible pipe and the aperture to close any gap.

intended use

The intended use of FLAMOCOL WEL is to reinstate the fire resistance performance of wall and floor constructions, where they are penetrated by various combustible pipe services. The specific elements of construction that the system

FLAMOCOL WEL may be used is as follows:

Fire resistance testing to EN 1366-3. Classified as EI 120 using EN 13501-2. Fire resistance testing in flexible walls, rigid floors and Flamoseal panel. FLAMOCOL WEL gives the users versatility when installing in a multitude of common site conditions, FLAMOCOL WEL is supplied in a convenient 25m long, 40mm wide roll.

Can be use with Plastic Pipes - PVC, HDPE, PP, PE, ABS, PVC-C and SAN + PVC.

key product points

Can be used to close off various types of insulation around metallic pipes. Causes no known effects to plastic pipes. The product is based on an thermoplastic composite and is therefore non-toxic. Halogen free, contains no asbestos, ceramic or mineral fibres. Not affected by fungus, vermin or rodents.

PRODUCT TECHNICAL DATA

Description	Result
Pipe Diameter	32mm, 40mm, 50mm, 55mm, 63mm, 75mm, 82mm, 90mm, 100mm, 110mm, 125mm, 140mm, 160mm, 200mm and 250mm
Plastic types	PVC-U, PVC-C, ABS, SAN + PVC, PE-HD, PE, PP
Width (Nominal)	40mm
Thickness (Nominal)	2mm at 32mm upto 10mm at 200mm
Density	Approximately 1.2 g/cm ³
Volume Expansion at 450°C	Approximately 25 times
Expansion Pressure N/mm ²	Up to max 1.30
Fire Resistance	Up to EI 120
Insulation	Phenolic, Elastomeric, Glass and Stone
Expected Shelf Life	N/A

installation

Ensure that the aperture and services in question are tested with FLAMOCOL WEL, and the site conditions are within the application specification. Sufficient annular space needs to be present around the service to allow adequate installation depth. All services and apertures need to be clean and clear of all dust and loose particles. The aperture temperature needs to at 50C or above at time of installation. Upon installation make sure that you install the FLAMOCOL WEL around the pipe using the correct number of wraps needed, leaving 5mm from the face of the surface, make sure that you fill all of the annulus with Flamocoustic Sealant to finish of the system. Ensure that the "mesh" side of the FLAMOCOL WEL is facing away from the service during installation. Once compacted, smooth off the Flamocoustic Sealant to produce a professional looking finish.

performance data - walls

INTUMESCENT THICKNESS		
Pipe Diameter	Pipe Diameter No of Layers / Wraps	Total Thickness (mm)
40	1	2
55	2	4
63	2	4
75	2	4
82	2	4
90	3	6
110	3	6
125	4	8
160	4	8
200	5	10

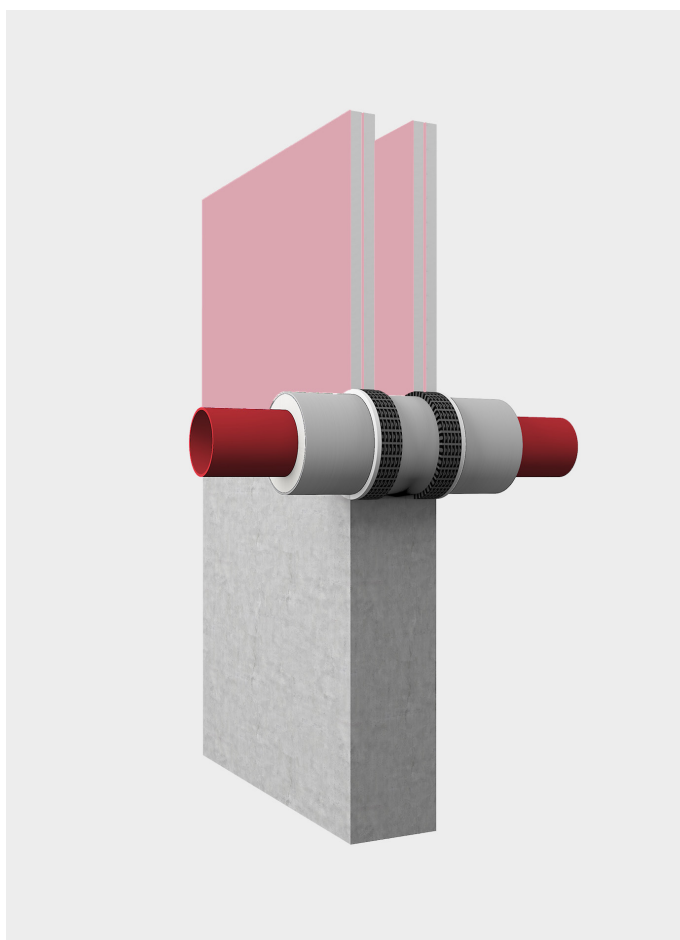


substrates

All walls shall have at least the same fire resistance as that required for the sealing system.

service support requirements

Services should be rigidly supported via steel angles, hangers or channels, not further than 400mm from the surface of the sealing system on both faces of wall and top face of floor unless specified otherwise in the performance data.



flexible or rigid wall

FLAMOCOL WEL, FRICTION FITTED FLUSH TO BOTH SIDES OF FLEXIBLE OR RIGID WALLS PVC PIPES

Penetration Specification	Wrap Reference	Intumescent Material	Annulus Space (mm)	Classification
PVC Pipe 50 mm ø	25 mtr roll of FLAMOCOL WEL	40 mm (W) x 4 mm (T)	4	EI 120
PVC Pipe 160 mm ø		40 mm (W) x 8 mm (T)	10	EI 90
PVC Pipe 160 mm ø		40 mm (W) x 10 mm (T)	12	EI 120 U/C
PVC Pipe 200 mm ø				
PVC Pipe 200 mm ø				

FLAMOCOL WEL, FRICTION FITTED FLUSH TO BOTH SIDES OF FLEXIBLE OR RIGID WALLS PP PIPES

Penetration Specification	Wrap Reference	Intumescent Material	Annulus Space (mm)	Classification
PP Pipe 50 mm ø	25 mtr roll of FLAMOCOL WEL	40 mm (W) x 4 mm (T)	4	EI 120
PP Pipe 160 mm ø		40 mm (W) x 8 mm (T)	10	E 120 EI 90
PP Pipe 160 mm ø		40 mm (W) x 10 mm (T)	12	EI 120
PP Pipe 200 mm ø				E 120 EI 90
PP Pipe 200 mm ø				EI 120
PP Pipe 250 mm ø		40 mm (W) x 14 mm (T)	14	E 120 EI 20

FLAMOCOL WEL, FRICTION FITTED FLUSH TO BOTH SIDES OF FLEXIBLE OR RIGID WALLS PE PIPES

Penetration Specification	Wrap Reference	Intumescent Material	Annulus Space (mm)	Classification
PE Pipe 50 mm ø	25 mtr roll of FLAMOCOL WEL	40 mm (W) x 4 mm (T)	4	EI 120
PE Pipe 160 mm ø		40 mm (W) x 8 mm (T)	10	EI 15 EI 90
PE Pipe 160 mm ø		40 mm (W) x 10 mm (T)	12	EI 15
PE Pipe 200 mm ø				EI 120
PE Pipe 200 mm ø				

performance data - flamoseal panel

FLAMOSEAL, 50MM PANEL IN RIGID & FLEXIBLE WALLS WITH A MINIMUM THICKNESS OF 100MM BOTH FACES.

Aperture Size	Seal Composition	Services	Seal	Classification
750mm wide by 1200mm high	Pattress installation of 50mm thick 140kg/m ³ Flamoseal panel	Single copper or steel pipe 40 - 159mm diameter	2 Layers of 2mm thick 40mm wide FLAMOCOL WEL installed within both Batts.	E 120, EI 60 EI 120

FLAMOSEAL, 50MM BATT IN RIGID & FLEXIBLE WALLS BOTH FACES

Aperture Size	Seal Composition	Services	Seal	Classification
750mm wide by 1200mm high	Pattress installation of 50mm thick 140kg/m ³ Flamoseal Coated Batt.	Single copper or steel pipe 40 - 108mm diameter	2 Layers of 2mm thick 40mm wide wide FLAMOCOL WEL installed within both Batts.	EI 90 EI 120

DOUBLE FLAMOSEAL 50MM BATT IN RIGID & FLEXIBLE WALLS BOTH FACES

Aperture Size	Seal Composition	Services	Seal	Classification
750mm wide by 1200mm high	Patress installation of 50mm thick 140kg/m ³ Flamoseal Coated Batt.	Single copper or steel pipe 40 - 159mm diameter	2 Layers of 2mm thick 40mm wide wide FLAMOCOL WEL installed within both Batts.	EI 60 E 120, EI 90

DOUBLE FLAMOSEAL 50MM PANEL IN RIGID & FLEXIBLE WALLS

Aperture Size	Seal Composition	Services	Seal	Classification
750mm wide by 1200mm high	Double layer of 50mm thick 140kg/m ³ Flamoseal	Single copper or steel pipe 40 - 108mm diameter	2 Layers of 2mm thick 40mm wide wide FLAMOCOL WEL installed within both Batts.	E 120, EI 60 EI 90

FLAMOCOL WEL INSTALLED INTO DOUBLE FLAMOSEAL PANEL IN FLEXIBLE WALL PVC-U, PVC-C WITH INSULATION

Aperture Size	Seal Composition	Services	Seal	Classification
600mm wide by 600mm high	Double layer of 50mm thick 140kg/m ³ Flamoseal panel.	PVC-U Pipes 40mm diameter with type insulation	100mm separation between services.	EI 90

performance data - rigid floor

FLAMOCOL WEL FRICTION FITTED FLUSH TO BOTH SIDES (TOP AND BOTTOM) OF RIGID FLOOR PP PIPES.

Penetration Specification	Wrap Reference	Intumescent Material	Annulus Space (mm)	Classification
PP Pipe 50 mm ø	25 mtrs of FLAMOCOL WEL	1 Layer of 40 mm (W) x 2 mm (T) 1 Layer of 40 mm (W) x 2 mm (T) combined thickness 40 mm (W) x 4 mm (T)	4	EI 120
PP Pipe 200 mm ø		40 mm (W) x 10 mm (T)	10	E 120, EI 90

rigid floor

FLAMOCOL WEL FRICTION FITTED FLUSH TO BOTH SIDES (TOP AND BOTTOM) OF RIGID FLOOR HDPE PIPES.

Penetration Specification	Wrap Reference	Intumescent Material	Annulus Space (mm)	Classification
HDPE Pipe 50 mm ø	25 mtrs of FLAMOCOL WEL	1 Layer of 40 mm (W) x 2 mm (T) 1 Layer of 40 mm (W) x 2 mm (T) combined thickness 40 mm (W) x 4 mm (T)	4	EI 120
HDPE Pipe 200 mm ø		40 mm (W) x 10 mm (T)	12	EI 120
HDPE Pipe 200 mm ø				EI 120

FLAMOCOL WEL FRICTION FITTED FLUSH TO BOTH SIDES (TOP AND BOTTOM) OF RIGID FLOOR PVC PIPES

Penetration Specification	Wrap Reference	Intumescent Material	Annulus Space (mm)	Classification
Pipe 50 mm ø	50 mm	1 Layer of 40 mm (W) x 2 mm (T) 1 Layer of 40 mm (W) x 2 mm (T) Combined Thickness 40 mm (W) x 4 mm (T)	4	EI 120
Pipe 200 mm ø	200 mm	40 mm (W) x 10 mm (T)	12	EI 120
Pipe 200 mm ø	200 mm			EI 60

FLAMOCOL WEL FRICTION FITTED IN CENTRE OF SEAL OF RIGID FLOOR PVC-U, PVC-C

Penetration Specification	Wrap Reference	Intumescent Material	Annulus Space (mm)	Classification
Pipe 50 mm ø	40mm	40mm (w) x 4mm (T)	6mm	EI 240
Pipe 50mm ø	50mm			E 240, EI 120
Pipe 200mm ø	200mm	40mm (w) x 20mm (T)	22mm	E 240 , EI 180
Pipe 200mm ø	200mm			EI 60

FLAMOCOL WEL FRICTION FITTED IN CENTRE OF SEAL OF RIGID FLOOR PE, ABS & SAN-PVC

Penetration Specification	Wrap Reference	Intumescent Material	Annulus Space (mm)	Classification
Pipe 50 mm ø	40mm	40mm (w) x 4mm (T)	6mm	EI 240
Pipe 50mm ø	50mm			
Pipe 200mm ø	200mm	40mm (w) x 20mm (T)	22mm	
Pipe 200mm ø	200mm			

FLAMOCOL WEL FRICTION FITTED IN CENTRE OF SEAL OF RIGID FLOOR PP

Penetration Specification	Wrap Reference	Intumescent Material	Annulus Space (mm)	Classification
Pipe 50 mm ø	40mm	40mm (w) x 4mm (T)	6mm	EI 240
Pipe 50mm ø	50mm			
Pipe 200mm ø	200mm	40mm (w) x 20mm (T)	22mm	
Pipe 200mm ø	200mm			

information

TRIA has Technical Representatives who provide assistance in the selection and specification of TRIA products. For more information, specification and technical advice please call our Head Office geral@tria.pt. Guarantee / Warranty: TRIA products are manufactured to rigid standards of quality. Any product which has been applied in accordance with TRIA's written instructions and in any application

recommended by TRIA, but which is proved to be defective in product quality, will be replaced free of charge. No liability can be accepted for the information provided in this document although it is published in good faith and believed to be correct. TRIA reserves the right to alter product specifications without prior notice, in line with our Company policy of continuous development and improvement.

COMPANY OF THE GROUP



TRIA - Serviços, Materiais e Equipamentos, SA.
Parque Ind. Manuel Lourenço Ferreira - Lt.43
3450 - 232 Mortágua
//+351 231 927 480 //geral@tria.pt
www.tria.pt

VER.12.22