

Fire Stopping Compartmentation Systems

FLAMOCOL



description

FLAMOCOL Collars are designed and tested to seal service penetration apertures containing plastic and metallic pipes with insulation or cables. They are developed to provide a high volume expansion and pressure seal during a fire.

The FLAMOCOL Collars offers EI120 and EI240 tested results to EN 1366-3, the maximum diameter available being 250mm. The ultra thin design of FLAMOCOL Collars means the collar shell can give a depth of 30mm and 40mm ensuring that they can be installed into the tightest of locations.

FLAMOCOL Collars can be installed on flexible wall, rigid wall, rigid floor constructions and in Flamoseal panel seals.

FLAMOCOL Collars is used around combustible pipes to form a penetration seal and to reinstate the fire resistance performance of wall and floor constructions, where they have been provided with apertures for the penetration of combustible pipe services.

FLAMOCOL Collars includes an intumescent component incorporated into a mild steel case to close any gaps and to provide a closure of combustible pipes when heated to prevent the passage of fire.

FLAMOCOL Collars are supplied in assembled form, without fixings. The collar is wrapped around the pipe at the soffit or both faces of walls, depending on application.

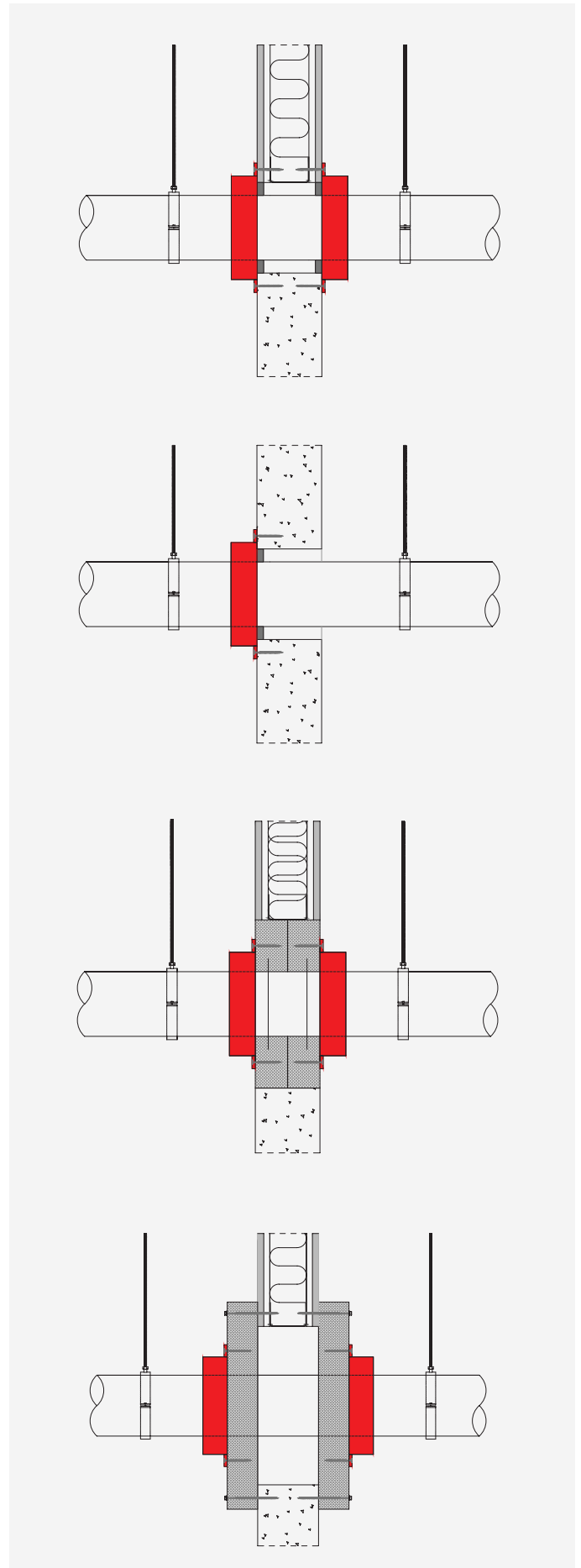
intended use

The specific elements of construction that the system FLAMOCOL Collars may be used in as follows.

- Suitable for use with flexible walls with > 100mm minimum thickness, rigid wall with > 100mm minimum thickness and rigid floors with 150mm minimum thickness also within the Flamoseal panel system.

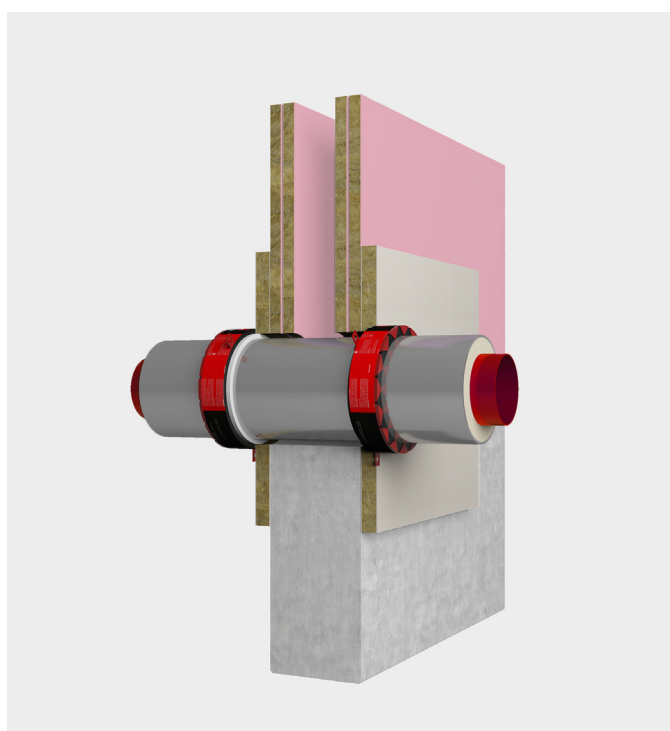
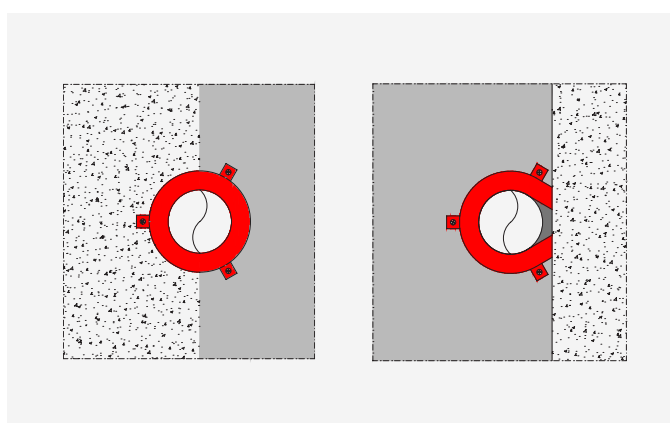
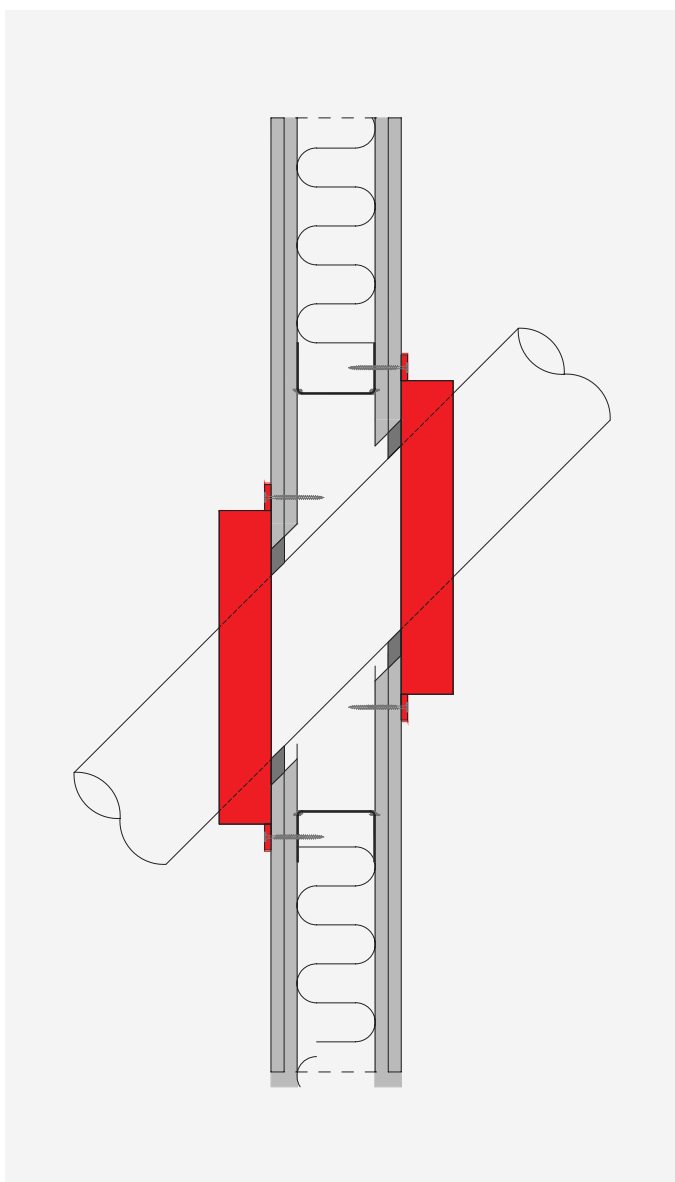
key product points

- Allows thermal and mechanical movement of pipe.
- Halogen free, contains no asbestos or ceramic and is environmentally friendly.
- Ease of fixing to suit location - 5 fixing types available.
- Not effected by fungus, vermin, rodents or moisture.



PRODUCT TECHNICAL DATA

Description	Result	Test standards
Pipe Diameter	1200mm x 600mm x 50mm / 1200 x 600 x 60mm	
Plastic types	PVC-U, PVC-C, ABS, SAN + PVC, PE-HD, PE, PP	
Fire Resistance Rigid Floors	EI 240 - Floor (underside)	EN 1366-3
Fire Resistance Flexible & Rigid Walls	EI 120 - Wall (one each side)	EN 1366-3
Expansion Rate	20:1	EOTA TR 024
Expansion Pressure N/mm ²	1.30	EOTA TR 024
Working Temperature	-20°C to +120°C	
Colour / Appearance	Green Steel - 3 Fixing Tabs	
Fixing Detail	3 No 60mm x 6mm Expanding Anchors Rigid Floors 3 No Size 70 Wood Screws Rigid Walls 3 No 65 mm Spider Fixings Flexible Walls 3 No 35mm Tap in Fixings Rigid Wall and Floors 3 No 80mm Pig tails for panel installation	
Expected Shelf Life	N/A	N/A



installation

Ensure that the aperture and services in question are tested with FLAMOCOL Collars, and the site conditions are within the application specification.

An annular space needs to be present around the service to apply sufficient installation depth of Flamocoustic Sealant.

All services and apertures need to be clean and clear of all dust and loose particles. The aperture temperature needs to be at 5°C or above at time of installation.

Upon installation make sure that you fill in the annular gap around the pipe maximum 10mm annular, install the FLAMOCOL Collars around the pipe and fix the collar to the wall or floor with the recommended fixings.

terminology

Fire performance in accordance with EN 1366-3, EN 1366-4, Classification I3501-2, Air Permeability EN 1026, Sound EN 10140. Fire resistance classes are: E = Integrity, the product can withstand the fire from the non-fire side, I = Insulation, the product can withstand the temperature travelling down the service, U/U = Uncapped inside and outside the furnace, U/C = Uncapped inside and Capped outside the furnace, C/U = Capped inside and Uncapped outside the furnace.

flexible or rigid wall

FLAMOCOL COLLARS, FACE FIXED TO BOTH SIDES OF THE WALL - PVC PIPES

Penetration specification	Collar reference	Classification
PVC Pipe 32mm ø to PVC Pipe 160mm ø	32 mm to 160mm FLAMOCOL Collars	EI 120 U/C

FLAMOCOL COLLARS, FACE FIXED TO BOTH SIDE OF THE WALL - PP PIPES

Penetration specification	Collar reference	Classification
PP Pipe 32mm ø to PVC Pipe 160mm ø	32 mm to 160mm FLAMOCOL Collars	EI 120 U/C

FLAMOCOL COLLARS, FACE FIXED TO BOTH SIDE OF THE WALL - PE PIPES

Penetration specification	Collar reference	Classification
PE Pipe 32mm ø to PVC Pipe 160mm ø	32 mm to 160mm FLAMOCOL Collars	EI 120 U/C

rigid wall

FLAMOCOL COLLARS, FACE FIXED TO BOTH SIDE OF THE WALL PP PIPES

Penetration specification	Collar reference	Classification
PP Pipe 110mm ø	110 mm FLAMOCOL Collars	EI 120 U/U
PP Pipe 160mm ø	160 mm FLAMOCOL Collars	EI 120 U/U
PP Pipe 250mm ø	250 mm FLAMOCOL Collars	EI 120 U/C

rigid fire resistant floor

FLAMOCOL COLLARS, FACE FIXED ON THE UNDERSIDE OF RIGID FLOOR - PVC PIPES

Penetration specification	Collar reference	Classification
PVC Pipe 32mm ø to PVC Pipe 160mm ø	32 mm to 160mm FLAMOCOL Collars	EI 240 U/C

FLAMOCOL COLLARS, FACE FIXED ON THE UNDERSIDE OF RIGID FLOOR - PP PIPES

Penetration Specification	Collar Reference	Classification
PP Pipe 32mm ø to PVC Pipe 160mm ø	32 mm to 160mm FLAMOCOL Collars	EI 240 U/C

FLAMOCOL COLLARS, FACE FIXED ON THE UNDERSIDE OF THE RIGID FLOOR - PE PIPES

Penetration specification	Collar reference	Classification
PE Pipe 32mm ø to PVC Pipe 160mm ø	32 mm to 160mm FLAMOCOL Collars	EI 240 U/C

FLAMOCOL COLLARS, FACE FIXED TO BOTH SIDE OF THE RIGID FLOOR - PP PIPES

Penetration specification	Collar reference	Classification
PP Pipe 110mm	110 mm FLAMOCOL Collars	EI 120 U/U
PP Pipe 160mm	160 mm FLAMOCOL Collars	EI 120 C/U

flamoseal mortar

FLAMOCOL COLLARS, FACE FIXED TO THE UNDERSIDE OF A FLAMOSEAL MORTAR PE, ABS & SAN+PVC PIPES

Aperture size	Seal composition	Services	Color reference	Capping	Penetration formation	Collar fixing	Classification
750mm wide by 1400mm high	100mm thick Flamoseal Mortar	PE Pipe 32mm to 160 mm	FLAMOCOL PE, ABS & SAN+PVC Pipes. 32 to 160	U/C	Cluster Formation of Pipes with 0mm separation.	Fixed on both sides of wall with a 60mm anchor fixing.	EI 120 U/C
750mm wide by 1400mm high	100mm thick Flamoseal Mortar	PP Pipe 32mm to 160 mm	FLAMOCOL PP Pipes 32 to 160	U/C	Cluster Formation of Pipes with 0mm separation.	Fixed on both sides of wall with a 60mm anchor fixing.	EI 120 U/C
750mm wide by 1400mm high	100mm thick Flamoseal Mortar	PVC Pipe 32mm to 160 mm	FLAMOCOL PVC-U & PVC-C Pipes 32 to 160	U/C	Cluster Formation of Pipes with 0mm separation.	Fixed on both sides of wall with a 60mm anchor fixing.	EI 120 U/C

flamoseal panel

FLAMOCOL COLLARS, FACE FIXED ONTO FLAMOSEAL PANEL IN FLEXIBLE PE, ABS & SAN+PVC PIPES

Aperture size	Seal composition	Services	Color reference	Capping	Penetration formation	Collar fixing	Classification
750mm wide by 1200mm high	Double layer of 50mm thick 140kg/m ³ Flamoseal Panel.	PE Pipe 32mm to 160 mm	FLAMOCOL PE, ABS & SAN+PVC Pipes 32 to 160	U/C	Cluster Formation of Pipes with 0mm separation.	Fixed on both sides of wall with a 80mm Pig Tail Screw.	EI 120 U/C
750mm wide by 1200mm high	Pattress installation of 50mm thick 140kg/m ³ Flamoseal Panel	PE Pipe 32mm to 160 mm	FLAMOCOL PE, ABS & SAN+PVC Pipes 32 to 160	U/C	Cluster Formation of Pipes with 0mm separation.	Fixed on both sides of wall with a 80mm Pig Tail Screw.	EI 120 U/C

FLAMOCOL COLLARS, FACE FIXED ONTO FLAMOSEAL PANEL IN FLEXIBLE PP PIPES							
Aperture size	Seal composition	Services	Color reference	Capping	Penetration formation	Collar fixing	Classification
750mm wide by 1200mm high	Pattress installation of 50mm thick 140kg/m ³ Flamoseal Panel	PP Pipe 32mm to 160 mm	FLAMOCOLPP Pipes 32 to 160	U/C	Cluster Formation of Pipes with 0mm separation.	Fixed on both sides of wall with a 80mm Pig Tail Screw.	EI 120 U/C
750mm wide by 1200mm high	Pattress installation of 50mm thick 140kg/m ³ Flamoseal Panel	PVC Pipe 32mm to 160 mm	FLAMOCOLPVC-U & PVC-C Pipes 32 to 160	U/C	Cluster Formation of Pipes with 0mm separation.	Fixed on both sides of wall with a 80mm Pig Tail Screw.	EI 120 U/C
750mm wide by 1200mm high	Pattress installation of 50mm thick 140kg/m ³ Flamoseal Panel	PVC Pipe 32mm to 160 mm	FLAMOCOL PVC-U & PVC-C Pipes 32 to 160	U/C	Cluster Formation of Pipes with 0mm separation.	Fixed on both sides of wall with a 80mm Pig Tail Screw.	EI 120 U/C

information

TRIA has Technical Representatives who provide assistance in the selection and specification of TRIA products. For more information, specification and technical advice please call our Head Office geral@tria.pt. Guarantee / Warranty: TRIA products are manufactured to rigid standards of quality. Any product which has been applied in accordance with TRIA's written instructions and in any application

recommended by TRIA, but which is proved to be defective in product quality, will be replaced free of charge. No liability can be accepted for the information provided in this document although it is published in good faith and believed to be correct. TRIA reserves the right to alter product specifications without prior notice, in line with our Company policy of continuous development and improvement.

COMPANY OF THE GROUP



TRIA - Serviços, Materiais e Equipamentos, SA.
Parque Ind. Manuel Lourenço Ferreira - Lt.43
3450 - 232 Mortágua
//+351 231 927 480 //geral@tria.pt
www.tria.pt

VER.12.22