

Fire Stopping Compartmentation Systems

FLAMOCOAT



TRIA

FLAMOCOAT

description

FLAMOCOAT is an ablative coating applied to mineral wool board used to reinstate the fire resistance performance of wall construction where they have been provided with apertures for the penetration of single or multiple services.

flamocoat for service penetration and blank seals

FLAMOCOAT is supplied in 2.5kg, 5kg, 10kg, 20kg, 25kg pails.

Mineral fibre boards are 50mm thick and supplied in overall dimensions 1200mm x 600mm with a density of 140kg/m³ and a resin content of less than 4.5%.

Flamocoustic Sealant is required to seal all joints and junctions during the sealing process.

Flamopro Sealant is required to seal around specific services. Flamopro Sealant is subject to a separate TDS document.

intended use

The intended use of FLAMOCOAT is to reinstate the fire resistance performance of rigid and flexible wall constructions where they are penetrated by various cables and metallic pipes or blank seals.

- Fire Resistant testing to EN 1366-3 EI 60.
- Fire Resistant testing to EN 1366-3 EI 120 Blank Seal.
- Fire Classification to EN 13501-2.
- Fire resistance tested in flexible & rigid walls, Composite Panel and CLT.
- Air Permeability testing to EN 1026 to 600Pa.
- Acoustic Isolation testing to EN 10140 to 51dB.

key product points

- Can be spray, brush or trowel applied.
- Suitable for indoor use without additional environmental protection.
- Remains flexible between -5°C to +70°C.
- Easy to use fibre free coating.
- Life expectancy of over 25 years.
- Suitable for large openings in walls with additional supports.

PRODUCT TECHNICAL DATA

Description	Result	Test Standard
Description	Water based flexible acrylic coating	
Colour	White / Grey / Red (others on request)	
Density	1.45 – 1.55 g/cm ³	ISO 2811-1:2011
Cure Rate	0.5mm per day at 50% relative humidity 23°C	
Tack Free	6hrs at 23°C, 50% RH	
Application Temperature	0°C to +30°C	
Coating Thickness	2.5mm Nominal, wet coating thickness	
FLAMOCOAT Coverage	2.8kg/m ² , 2.24L/m ²	
Fire Resistance	EI 60, EI 120	EN1366-3, EN1366-4
Classification	EN 13501-2	
Acoustic Isolation	51dB when installed with 100mm thick 140kg/m ³ stone wool.	EN 10140
Air Permeability	600 Pa EN 1026 - 100Pa 1.8/1.4 m ³ /h/m ²	EN 1026
Container Size	2.5kg, 5kg, 10kg, 20kg, 25kg, 205ltr.	
Spray Pressure	Machine 90psi / Tip 6000psi / Tip Size 0.85mm	
Installation Specification	50mm Stone Wool - EI 60 100mm Stone Wool - EI 120	EN 1366-3
VOC % Nonaqueous volatiles (105°C)	4.9	LEED
Expected Shelf Life	12 months	Store in accordance with packaging instructions

key installation points

Ensure that all the requirements are met with regards to FLAMOCOAT specification.
All substrates and services must be clean, dry and free from contaminants.
All stone wool boards must be minimum 140kg/m³ in density. FLAMOCOAT must be applied to a nominal thickness of 2.5mm wet film thickness (WFT) if coating the stone wool boards.
When using the FLAMOCOAT to install the stone wool boards all edges must be coated using FLAMOCOAT or Flamocoustic Sealant prior to final fitting.
Fit the coated stone wool board as per Flamoseal Board installation guidance.

service support requirements

All walls shall have at least the same fire resistance as that required for the sealing system.

service support requirements

Services should be rigidly supported via steel angles, hangers or channels, not further than 400mm from the surface of the sealing system on both faces unless specified otherwise in the performance data.

flexible and rigid wall 100mm - metallic pipes

FLEXIBLE AND RIGID WALL CONSTRUCTION PENETRATION SEAL, INSTALLED CENTRALLY WITHIN THE WALL.

Service(s) Mild Steel or Copper	Insulation	Seal	Classification
40mm diameter	20mm thick foil faced mineral wool insulation (min 80kg/m ³).	15mm deep x 15mm wide annulus Flamopro Sealant to both faces seal	EI 60
40 - 159mm diameter	30mm thick foil faced glass wool insulation (min 80kg/m ³).		EI 60

flexible and rigid - blank seal

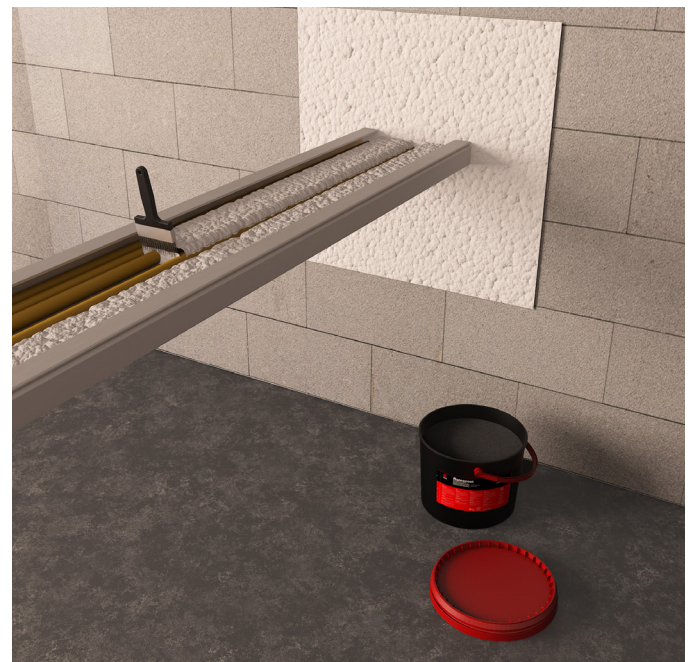
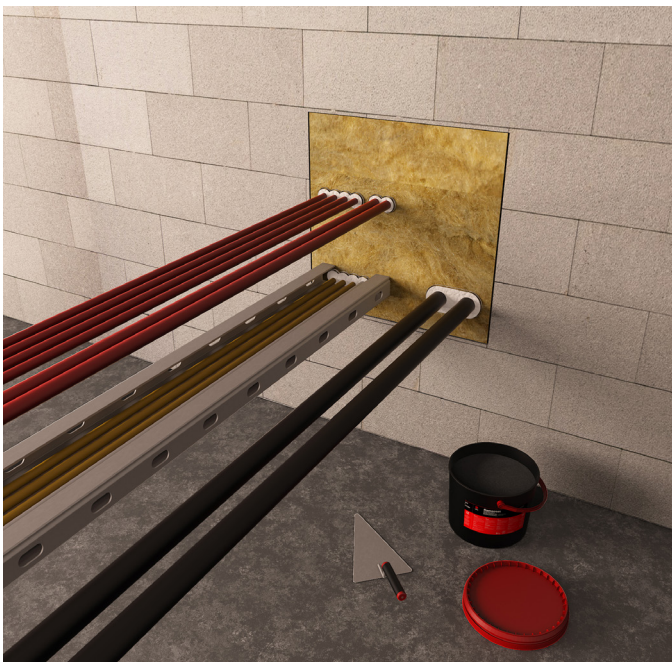
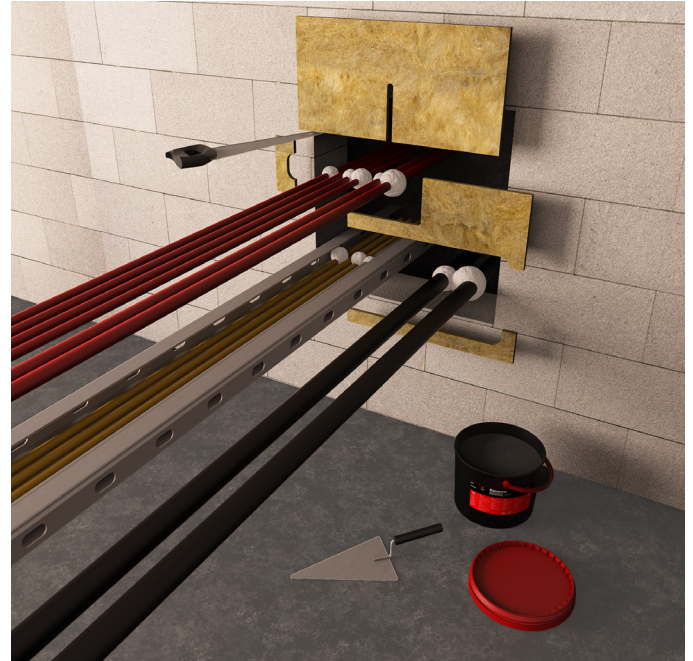
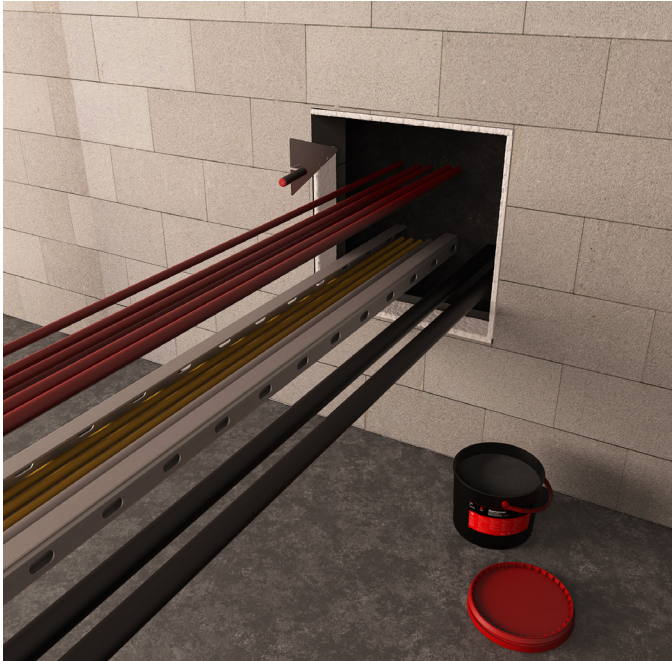
RIGID & FLEXIBLE BLANK SEAL WALLS

Aperture Size	Seal Composition	Services	Classification
730mm wide by 1200mm high	100mm of 140kg/m ³ stone fibre coated with	Blank Seal	EI 120

flexible and rigid wall - cables, cable trays and metallic conduits

FLEXIBLE AND RIGID WALL, PENETRATION SEAL WITH SYSTEM INSTALLED CENTRALLY WITHIN THE WALL.

Service(s)	Classification
Electrical cables	EI 60
Cable Trays and Ladders.	EI 60
100mm diameter bundle telecommunication cable type "F".	EI 60
Plastic conduits up to 16mm.	EI 60
Cables coated with 2,5mm WFT in 300mm along the cables on both sides of the seal.	



information

TRIA has Technical Representatives who provide assistance in the selection and specification of TRIA products. For more information, specification and technical advice please call our Head Office geral@tria.pt. Guarantee / Warranty: TRIA products are manufactured to rigid standards of quality. Any product which has been applied in accordance with TRIA's written instructions and in any application

recommended by TRIA, but which is proved to be defective in product quality, will be replaced free of charge. No liability can be accepted for the information provided in this document although it is published in good faith and believed to be correct. TRIA reserves the right to alter product specifications without prior notice, in line with our Company policy of continuous development and improvement.

COMPANY OF THE GROUP



TRIA - Serviços, Materiais e Equipamentos, SA.
Parque Ind. Manuel Lourenço Ferreira - Lt.43
3450 - 232 Mortágua
//+351 231 927 480 //geral@tria.pt
www.tria.pt

VER.05.21