

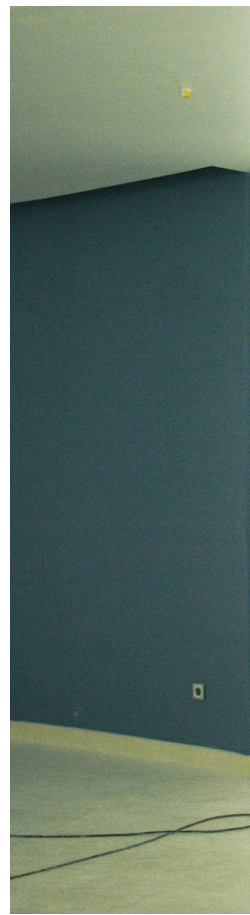


TRIA

FOGOFIL SYSTEM

glazed - steel







MODELS

FOGOFIL SYSTEM

Accessories and hardware	04
Profile Details	05
Fogofil System E30 E60	
Single and double leaf door overpanel side panel	12
Wall partitions	18
Fogofil System EI30	
Single and double leaf door overpanel side panel	20
Wall partitions	26
Fogofil System EI60	
Single and double leaf door overpanel side panel	28
Wall partitions	34
Fogofil System EI90	
Single and double leaf door overpanel side panel	36
Wall partitions	42

hardware

FOGOFIL SYSTEM

handle / anti-panic bar⁽¹⁾

1	standard	anti-panic lever handle finished in black or stainless steel.	
2	standard	anti-panic bar with box unit, tube, cover caps and arms (black-black/ black-red/black-green/silver-silver/stainless steel-stainless steel).	

⁽¹⁾ alternative: the door may be equipped with a pair of lever handles.

door closer

3	standard	door closer with an link arm (opening angle up to 180°)	2 door closer with an link arm (opening angle up to 180°) + closing sequence selector
	standard	door closer with guide rail (opening angle up to 110°)	2 door closer with guide rail (opening angle up to 110°) + closing sequence selector
	optional	concealed door closer (opening angle up to 110°) (Consult TRIA technical department to evaluate this option)	concealed door closer (opening angle up to 110°) + closing sequence selector (Consult TRIA technical department to evaluate this option)

lock / counter lock

4	standard	anti-panic lock with 1 point locking	anti-panic lock with 1 point locking + counter lock
	optional	anti-panic lock with 3 points s locking	anti-panic lock with 3 points locking + counter lock

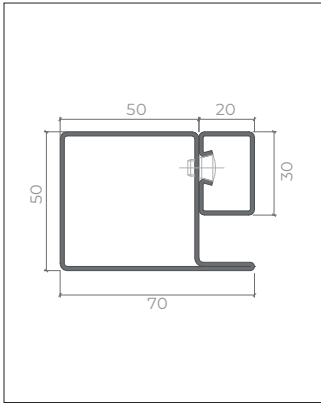
cylinder

5	standard	cylinder (european profile) 1/2 cylinder (European profile) with anti-panic accessories	cylinder (european profile) 1/2 cylinder (european profile) with anti-panic accessories
---	----------	---	---

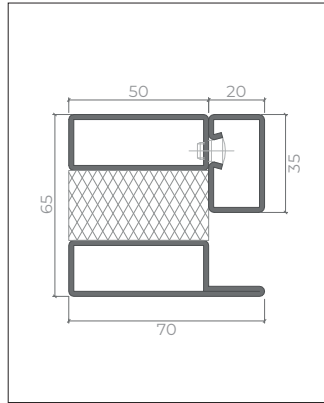
hinges

6	standard	2 or more exclusive hinges of this series (according the model, weight, dimension and intensity of use)	2 or more exclusive hinges of this series (per leaf (according the model, weight, dimension and intensity of use)
---	----------	--	--

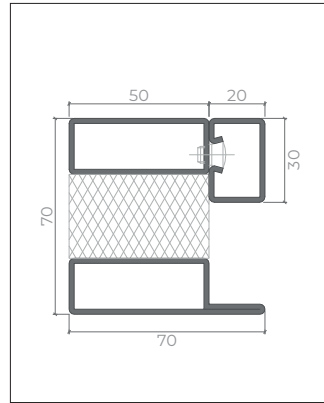
profile



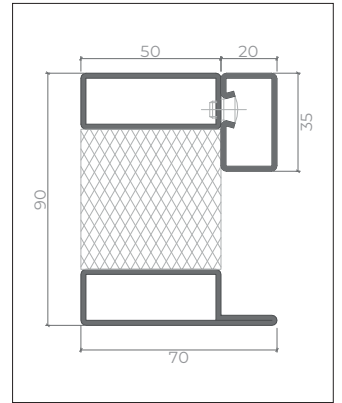
profile - E30 | E60



profile - EI 30

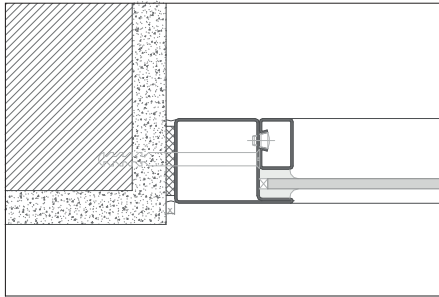


profile - EI 60

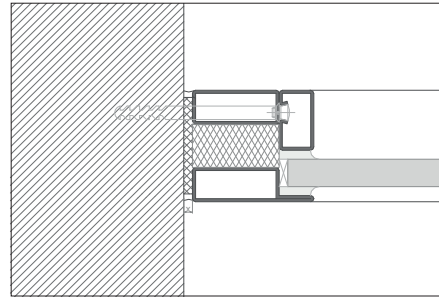


profile - EI 90

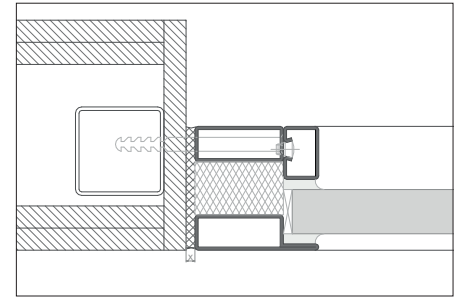
details



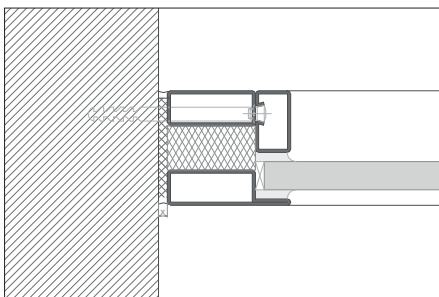
masonry wall fixing - profile E30 | E60



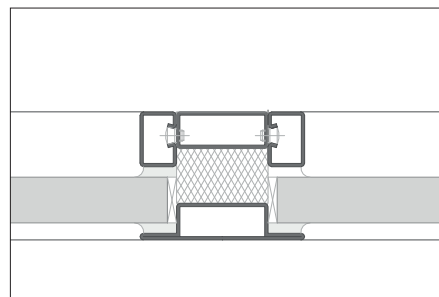
concrete wall fixing - profile EI 30



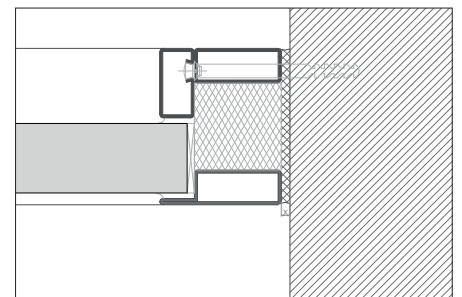
drywall system wall fixing - profile EI 60



wall partitions - profile EI 30

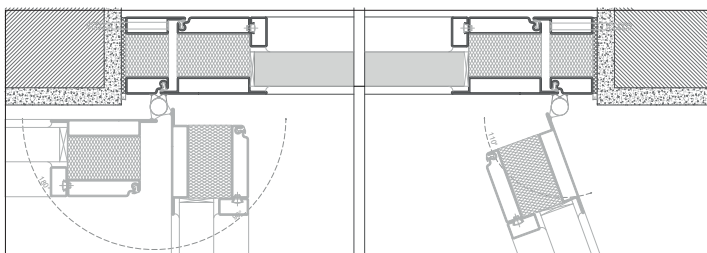


wall partitions - profile EI 60



wall partitions - profile EI 90

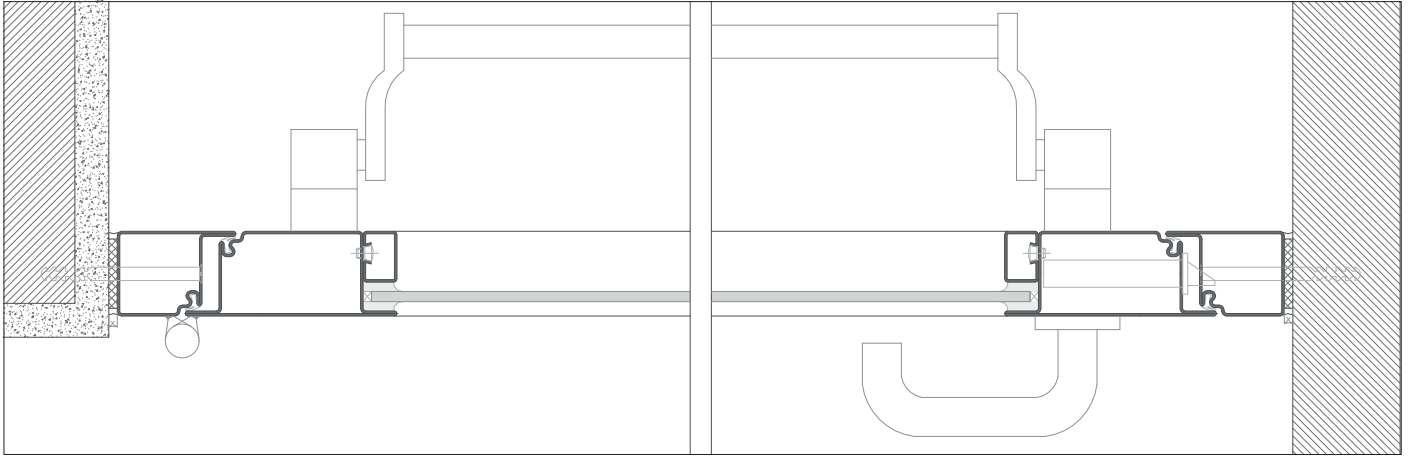
opening scheme



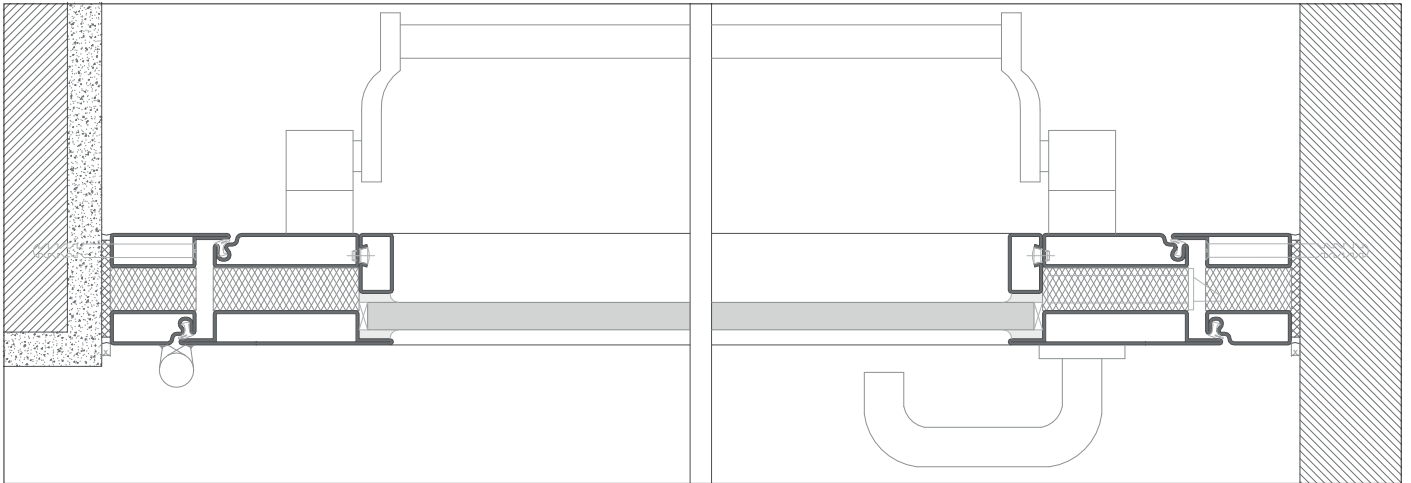
door closer with an link arm
(opening angle up to 180°)

door closer with guide rail
(opening angle up to 110°)

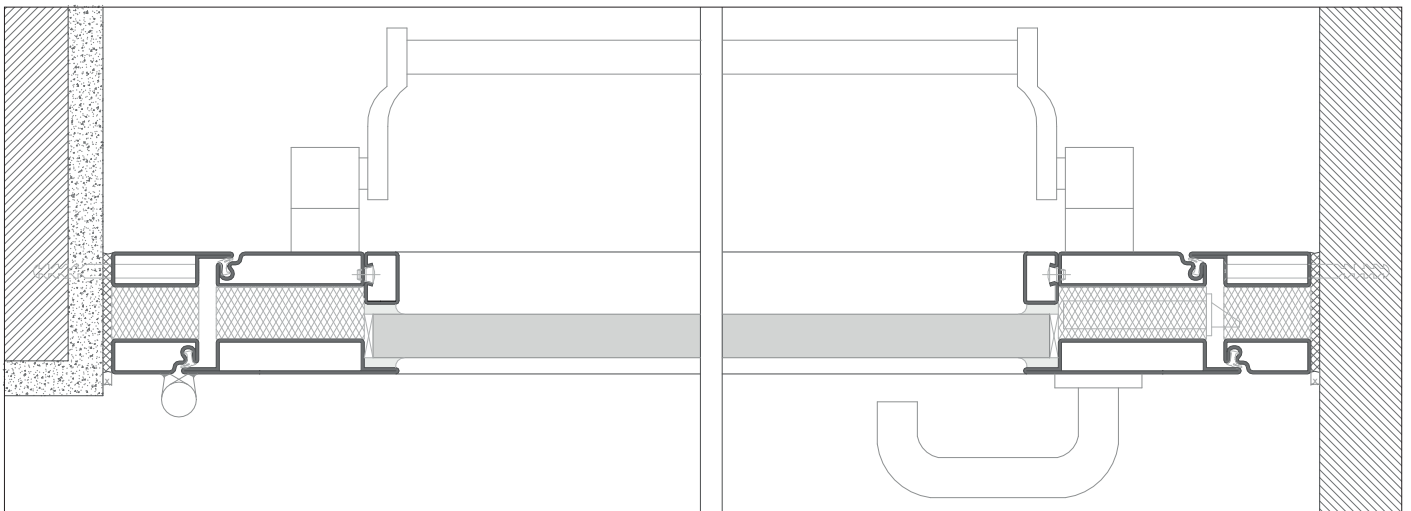
details



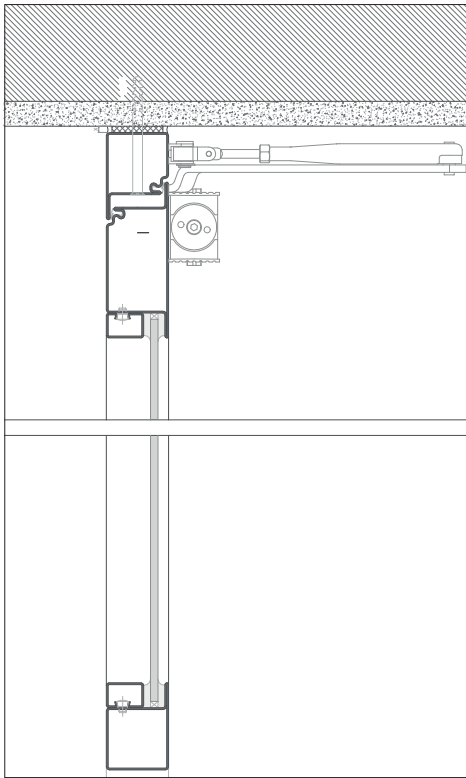
door detail | 1 leaf - E30 | E60



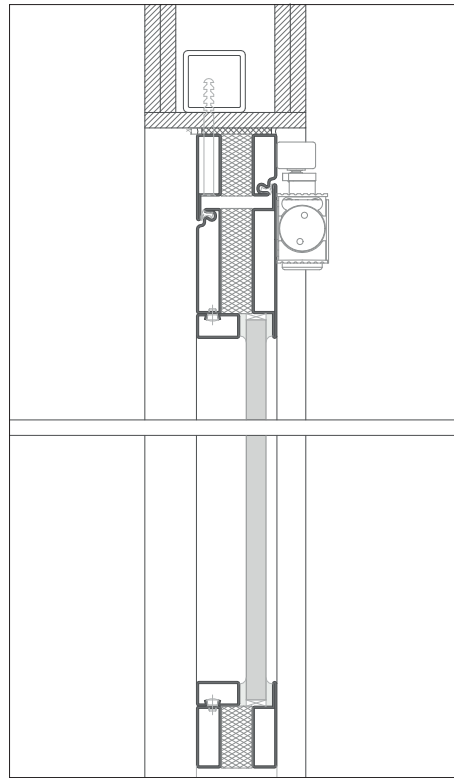
door detail | 1 leaf - EI 30



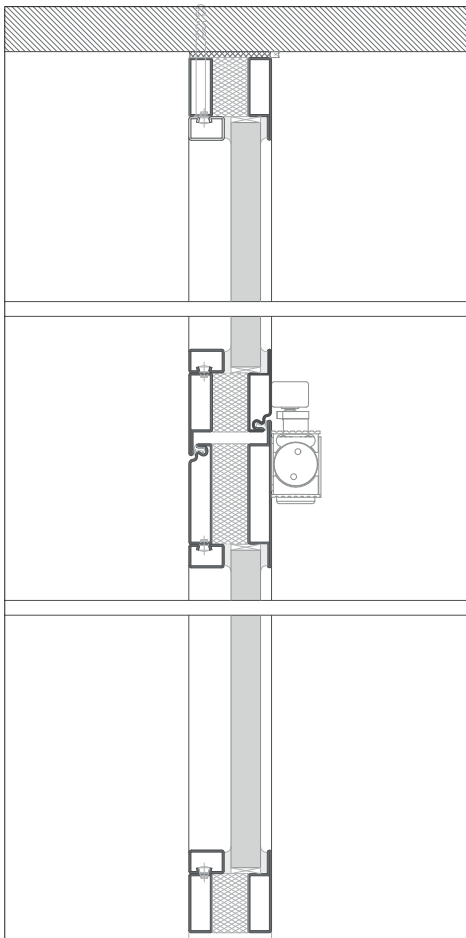
door detail | 1 leaf - EI 60



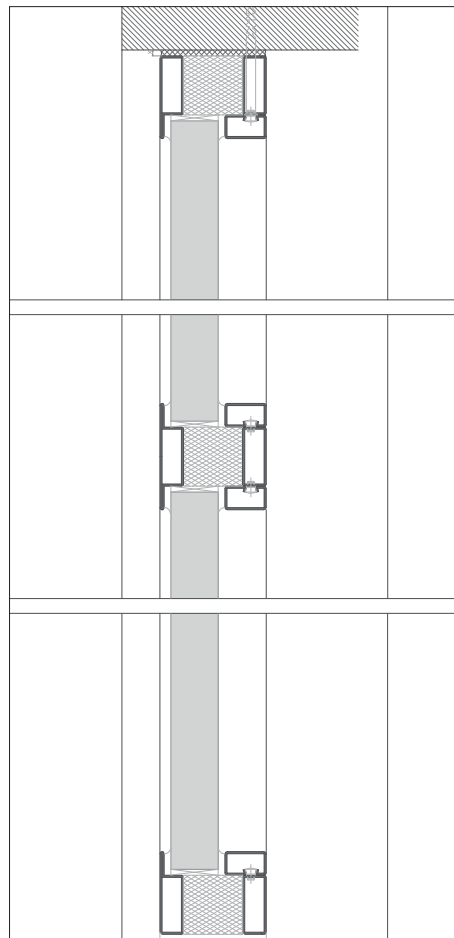
masonry wall door mounting
- profile E30 | E60



drywall system wall mounting | door
closer with guide rail - profile EI 30



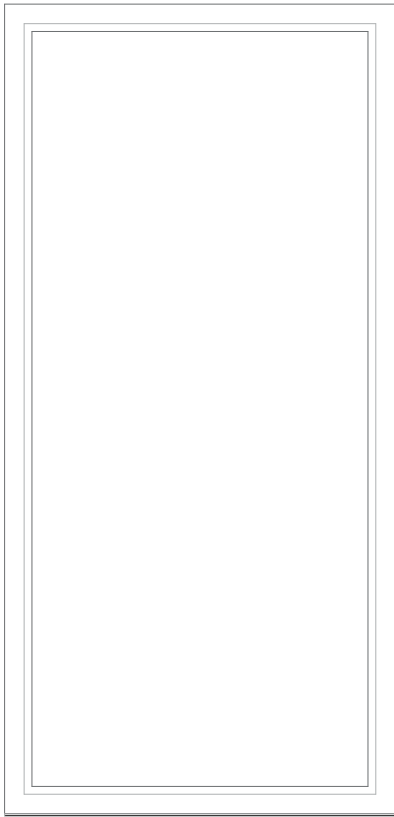
door and overpanel mounting on a concrete
wall | door closer with guide rail - profile EI
60



wall partitions fixed to a concrete wall -
profile EI 30 | EI 60 | EI 90

wall partitions





height max. 2760 mm



height max. 2760 mm



height max. 3590 mm



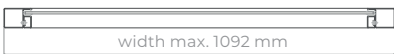
height max. 3433 mm

E30 | E60

EI 30

EI 60

EI 90



width max. 1092 mm

E30 | E60



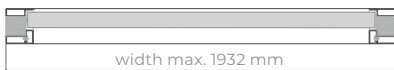
width max. 1092 mm

EI 30



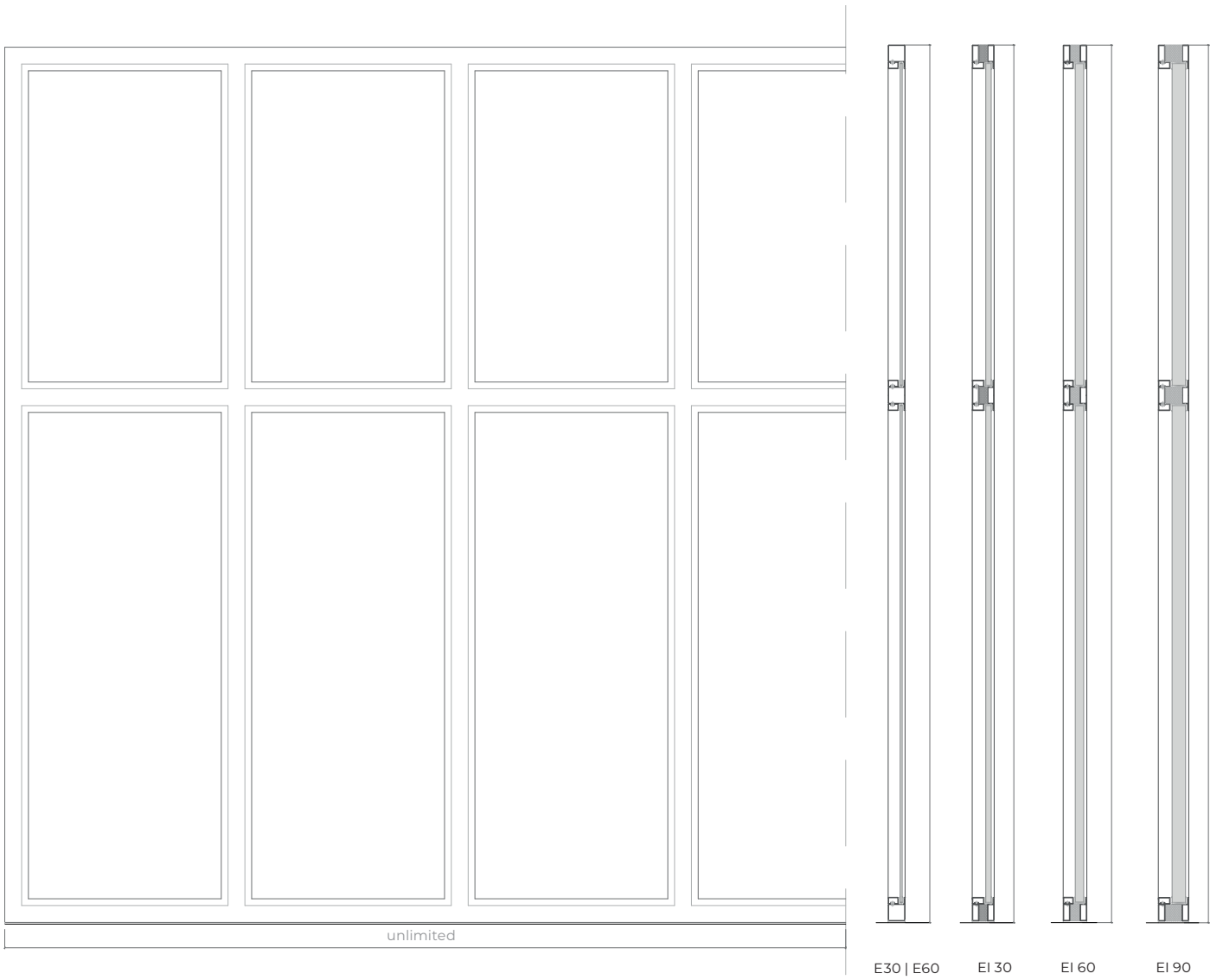
width max. 1932 mm

EI 60



width max. 1932 mm

EI 90





Butt-joint system EI30, EI60 e EI90
(Consult TRIA technical department to evaluate this option)



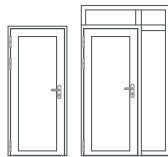
FOGOFIL SYSTEM E30 | E60

description

Manufactured in accordance with the TRIA – FOGOFIL construction model, tested in accordance the Standard EN 1634-1. Profile in cold rolled steel, continuously welded, factory treated against corrosion by electrolytic galvanization, fire resistant glass of the system, galvanized glazing beds with concealed fixation and welded or screwed system hinges.

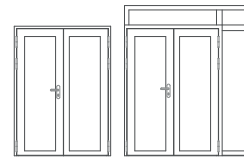
specification

model | format



Glazed single leaf door

Glazed single leaf door
+ overpanel and/or side panel



Glazed double leaf door

Glazed double leaf door +
overpanel and/or side panel

classification

classification (EN 1634-1)

Classification according EN 13501-2

both sides

E 30 | E 60

both sides

E 30 | E 60

leaf dimensions(mm)

W x H (standard)⁽¹⁾

800 / 900 x 2000 / 2100

1400 / 1600 / 1800 x 2000 / 2100

W maximum^(1*)

1403

1380

H maximum^(1*)

2702

2542

maximum area

3,44 m²

3.42m²

external frame (standard)

L + 140 x H + 70

L + 140 x H + 70

⁽¹⁾ W x H = width X height = free passage

^(1*) W and H should be considered in conjunction with the maximum area

side panels (mm)

W maximum^(1*)

1092

1092

H maximum^(1*)

2760

2760

maximum area

2.74 m²

2.74 m²

^(1*) W and H should be considered in conjunction with the maximum area

overpanel dimensions (mm)

L maximum⁽¹⁾

H maximum⁽¹⁾

maximum area

other dimensions

⁽¹⁾W and H should be considered in conjunction with the maximum area

type 1

without vertical profile on center

2990

506

1,37 m²

on request

type 2

with vertical profile on center

1483

807

1.2m²

on request

construction

profile thickness (mm)

50

50

leaf weight (kg/m)⁽²⁾

3

3

hinges (per leaf)⁽³⁾

2

2

glass thickness (standard)

the thickness can vary from 6 to 12mm, according to type of glass E30 | E60

the thickness can vary from 2 to 12mm, according to type of glass E30 | E60

finishing (standard)

galvanized steel for painting / standard RAL color⁽⁴⁾

galvanized steel for painting / standard RAL color⁽⁴⁾

finishing (optional)

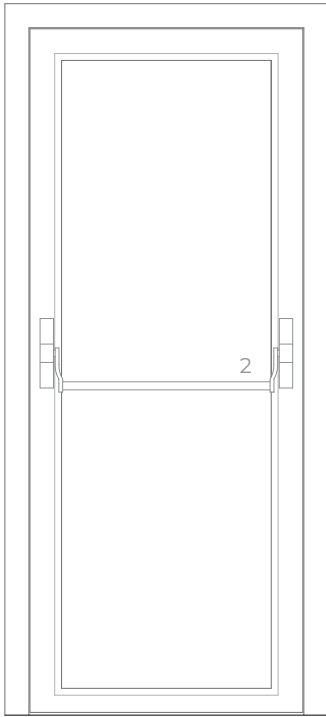
stainless steel

stainless steel

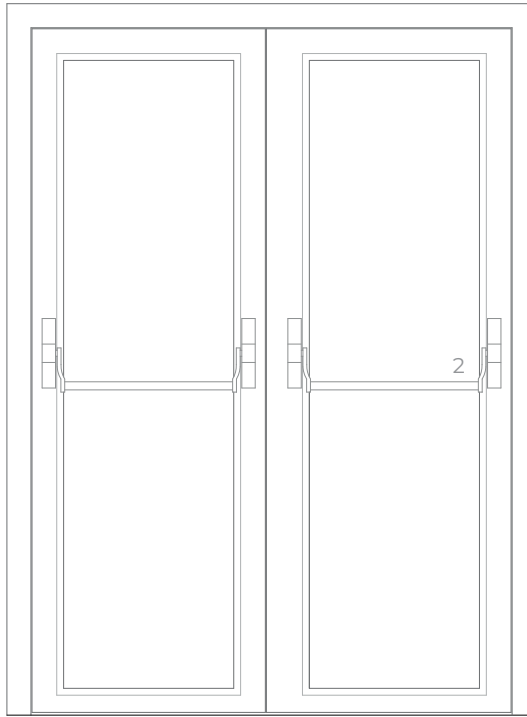
⁽²⁾leaf weight is conditioned by the type of glass

⁽³⁾ 2 ou 3 - the number of hinges, per leaf, must be according to the weight, size and intensity of use

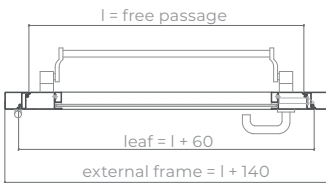
⁽⁴⁾RAL colors standard= 7035, 7038, 9005 e 9010



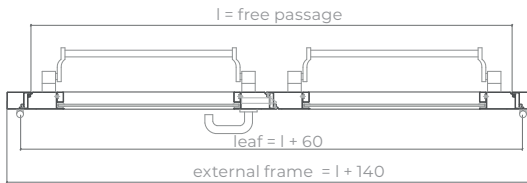
exterior view



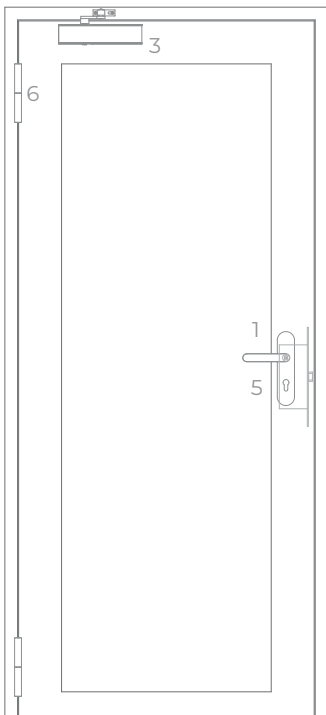
exterior view



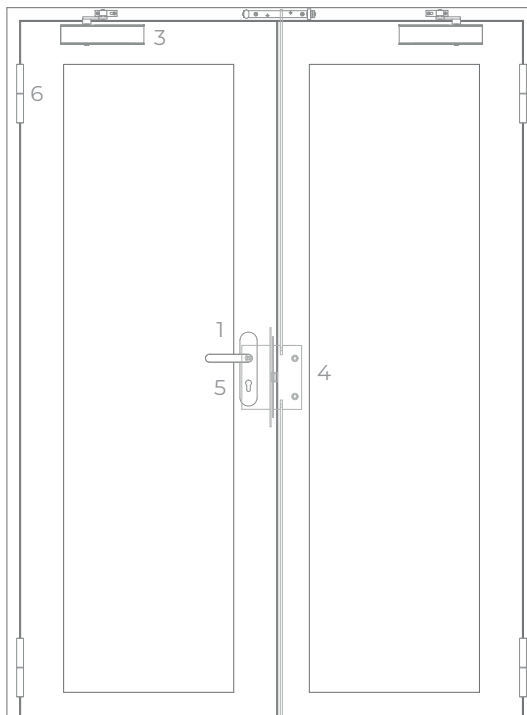
horizontal section



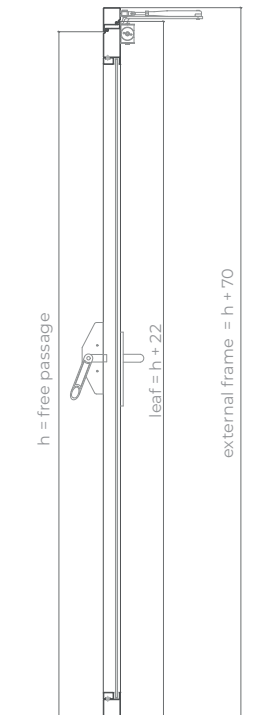
horizontal section



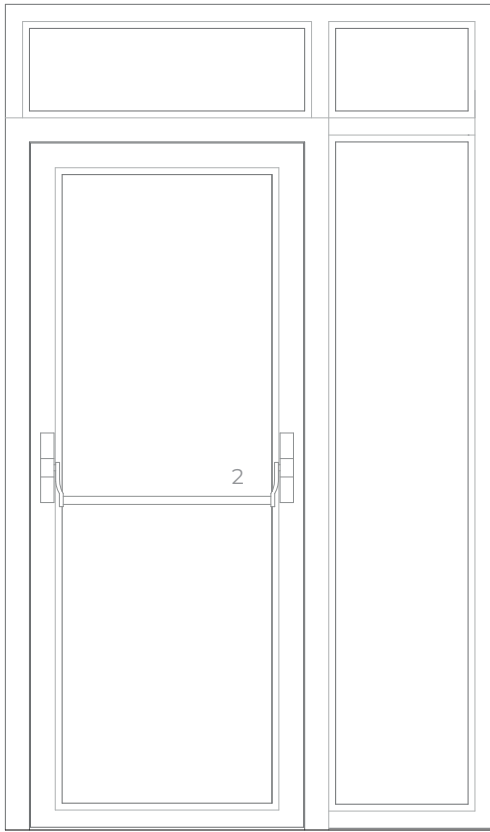
interior view



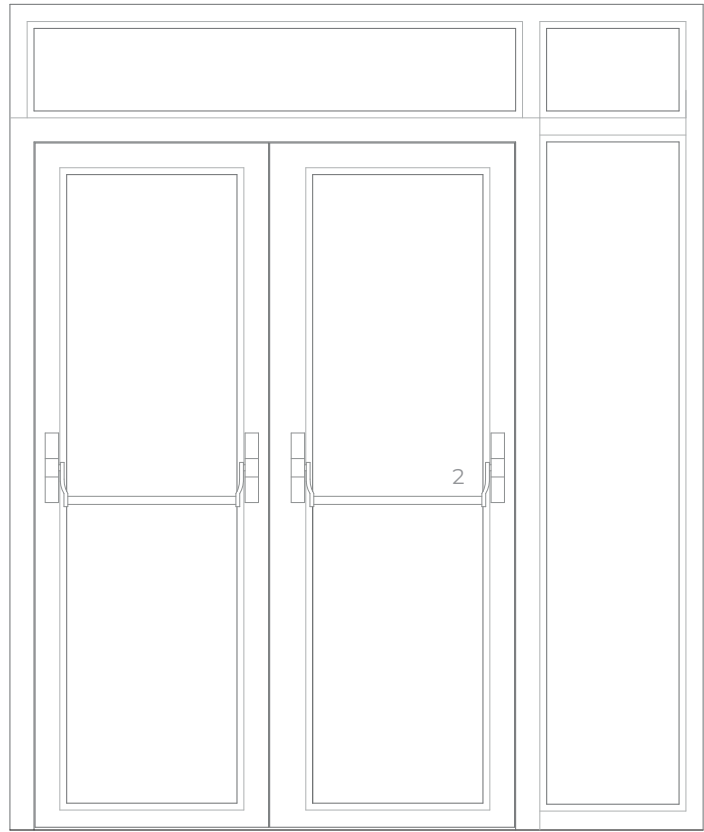
interior view



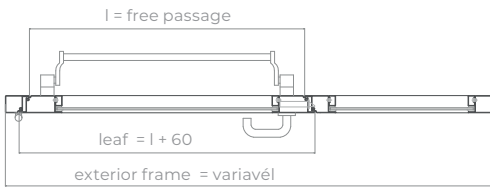
vertical section



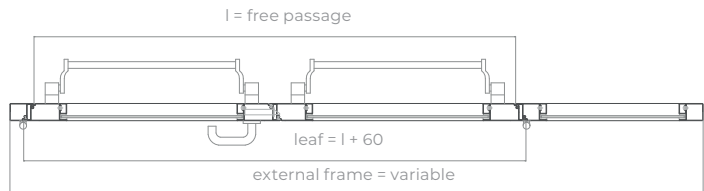
interior view



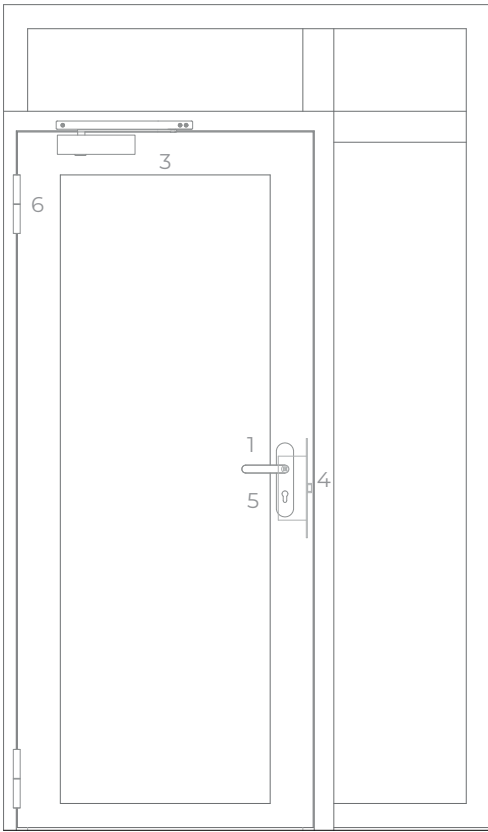
interior view



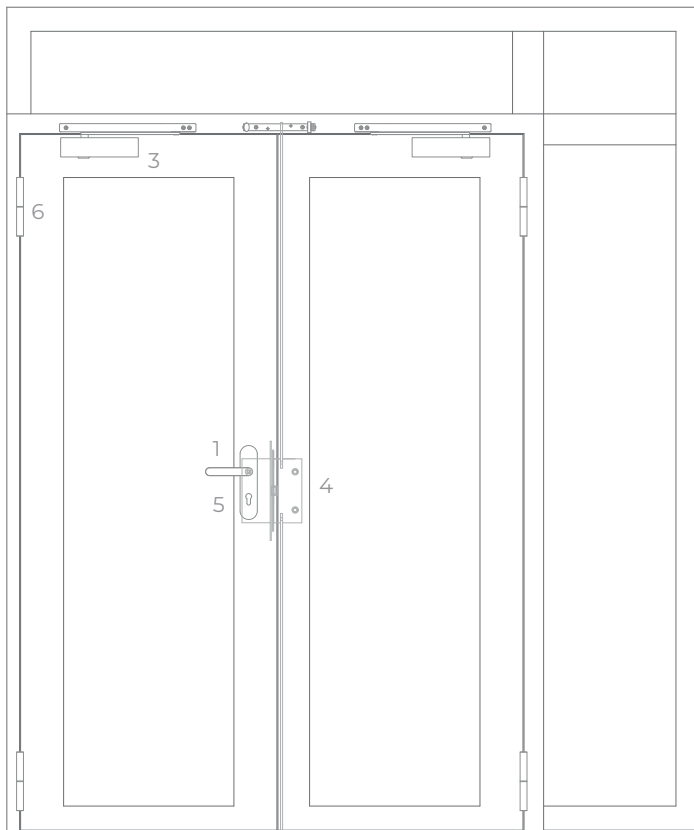
horizontal section



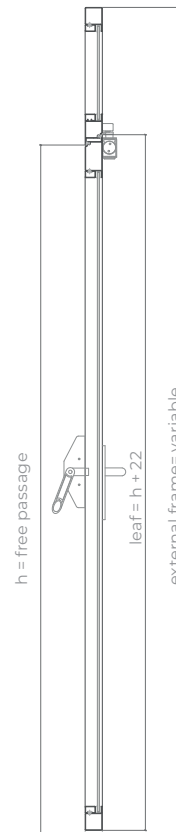
horizontal section



exterior view



exterior view



vertical section
door and overpanel



vertical section
wall partition



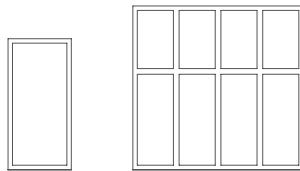
FOGOFIL SYSTEM

WALL PARTITIONS E30 | E60

description

Manufactured in accordance with the TRIA – FOGOFIL construction model, tested in accordance the Standard EN 1634-1. Profile in cold rolled steel, continuously welded, factory treated against corrosion by electrolytic galvanization, fire resistant glass of the system, galvanized glazing beds with concealed fixation.

specification



model | format

Wall partitions

classification

classification (EN 1634-1)

Classification according EN 13501-2

both sides

E30 | E60

glazed panel dimensions E30 | E60

(Unlimited width, by using intermediate vertical profiles)

W maximum⁽¹⁾

1092

H maximum⁽¹⁾

2760

maximum area

2.74 m²

⁽¹⁾ W and H should be considered in conjunction with the maximum area

overpanel dimensions (mm)

W maximum

2990

H maximum

506

maximum area

1,37 m²

other dimensions

on request

type 2

with vertical profile on center

1483

807

1.2 m²

on request

type 1

without vertical profile on center

construction

profile thickness (mm)

50

profile weight (Kg/m)⁽²⁾

2

glass thickness (mm)

6 to 14 mm

finishing (standard)

galvanized steel for painting / standard RAL color⁽³⁾

finishing (optional)

stainless steel

⁽²⁾ panel weight is conditioned by the type of glass

⁽³⁾ RAL colors standard= 7035, 7038, 9005 e 9010



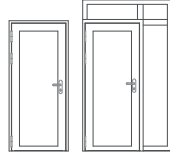
FOGOFIL SYSTEM EI30

description

Manufactured according to the TRIA - FOGOFIL construction model, certified in accordance with Standard EN 1634-1. Profile in cold rolled steel, continuously welded, factory treated against corrosion by electrolytic galvanization, including integrated thermal break system, fire resistant glass of the system, galvanized glazing beds with concealed fixation and welded or screwed system hinges.

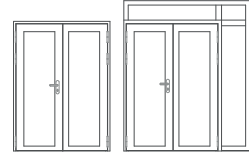
specification

model | format



Glazed single leaf door

Glazed single leaf door +
overpanel and/or side panel



Glazed double leaf door

Glazed double leaf door +
overpanel and/or side panel

classification

classification(EN 1634-1)

Classification according EN 13501-2

both sides

EI 30

both sides

EI 30

leaf dimensions(mm)

W x H (standard)⁽¹⁾

800 / 900 x 2000 / 2100

1400 / 1600 / 1800 x 2000 / 2100

W maximum⁽¹⁾

1296

1225

H maximum⁽¹⁾

2566

2605

maximum area

2,79 m²

2.89m²

external frame (standard)

L + 140 x H + 70

L + 140 x H + 70

⁽¹⁾ W x H = width X height = free passage

⁽¹⁾ W and H should be considered in
conjunction with the maximum area

side panel dimensions (mm)

W maximum⁽¹⁾

1092

1092

H maximum⁽¹⁾

2760

2760

maximum area

2.74 m²

2.74 m²

⁽¹⁾ W and H should be considered in
conjunction with the maximum area

overpanel dimensions (mm)

W maximum⁽¹⁾

H maximum⁽¹⁾

maximum area

other dimensions

⁽¹⁾W and H should be considered in conjunction with the maximum area

construction

profile thickness (mm)

leaf weight (kg/ml)⁽²⁾

hinges (per leaf)⁽³⁾

glass thickness (standard)

finishing (standard)

finishing (optional)

⁽²⁾leaf weight is conditioned by the type of glass

⁽³⁾the number of hinges, per leaf, may increase depending on the weight, size and intensity of use

⁽⁴⁾RAL colors standard= 7035, 7038, 9005 e 9010

type 1

without vertical profile on center

2950

449

1.2 m²

on request

65

6

2

the thickness can vary from 16 to 25 mm, according to type of glass EI 30

galvanized steel for painting / standard RAL color⁽⁴⁾

stainless steel

type 2

with vertical profile on center

2530

828

1.9m²

on request

65

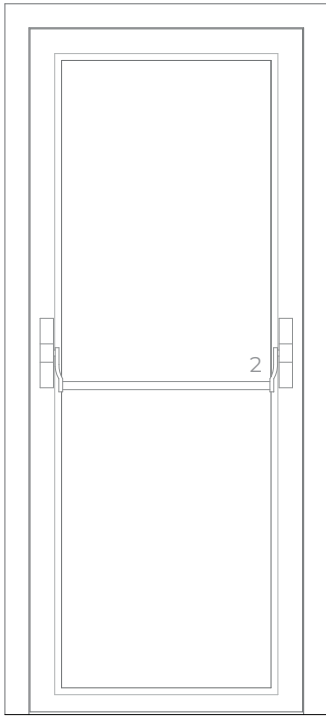
6

2

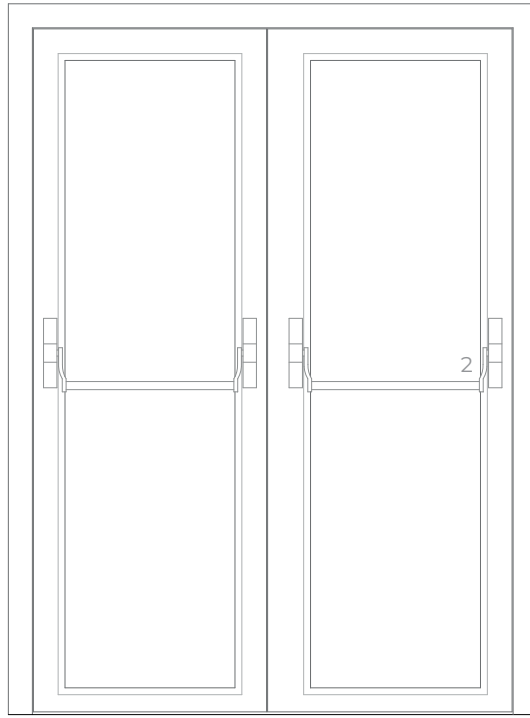
The thickness can vary from 16 to 25 mm, according to type of glass EI 30

Galvanized steel for painting / standard RAL color⁽⁴⁾

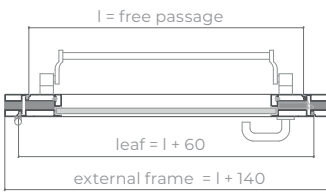
stainless steel



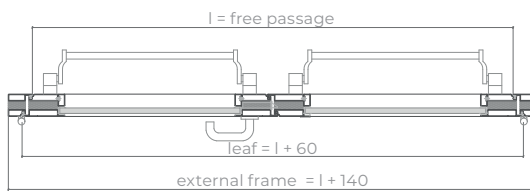
interior view



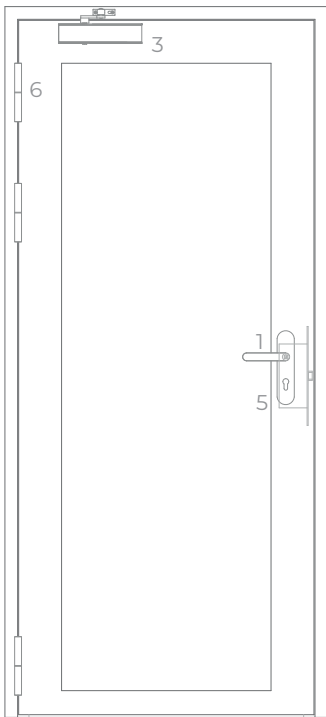
interior view



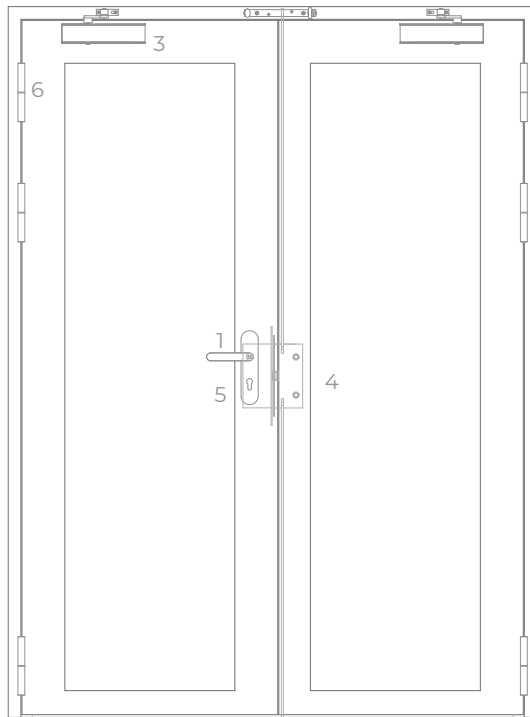
horizontal section



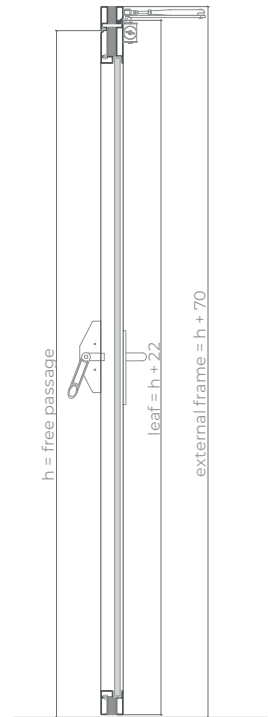
horizontal section



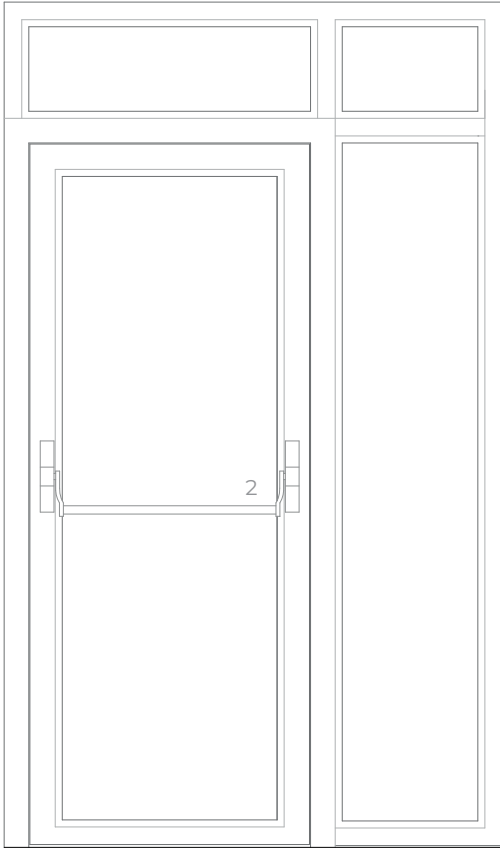
exterior view



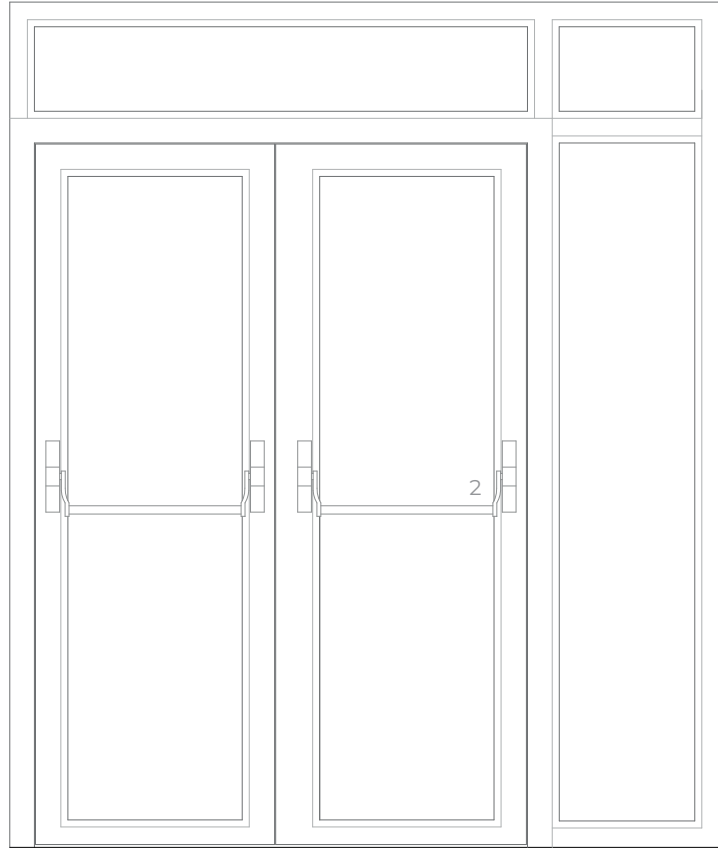
exterior view



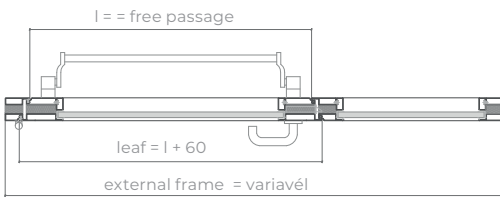
vertical section



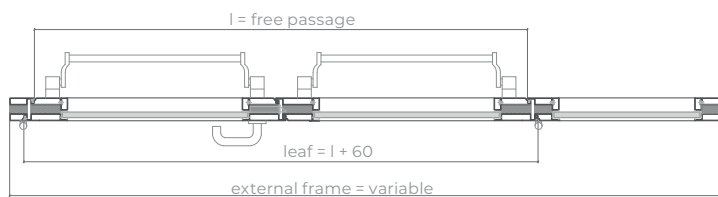
interior view



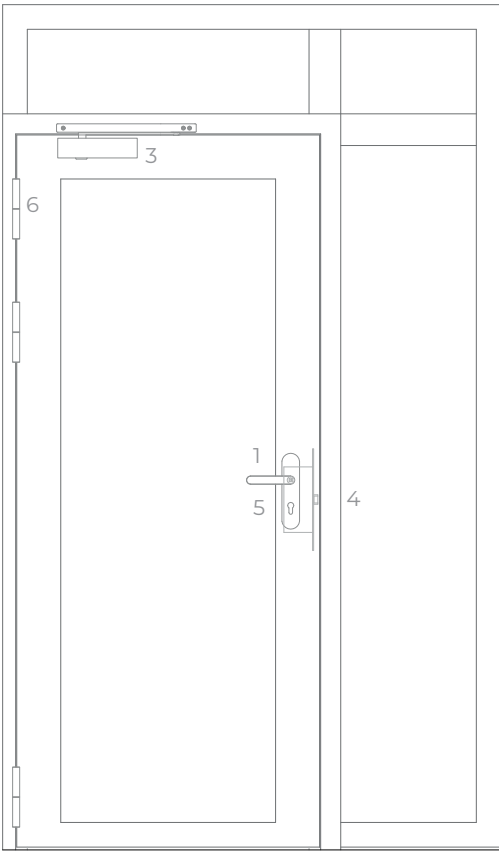
interior view



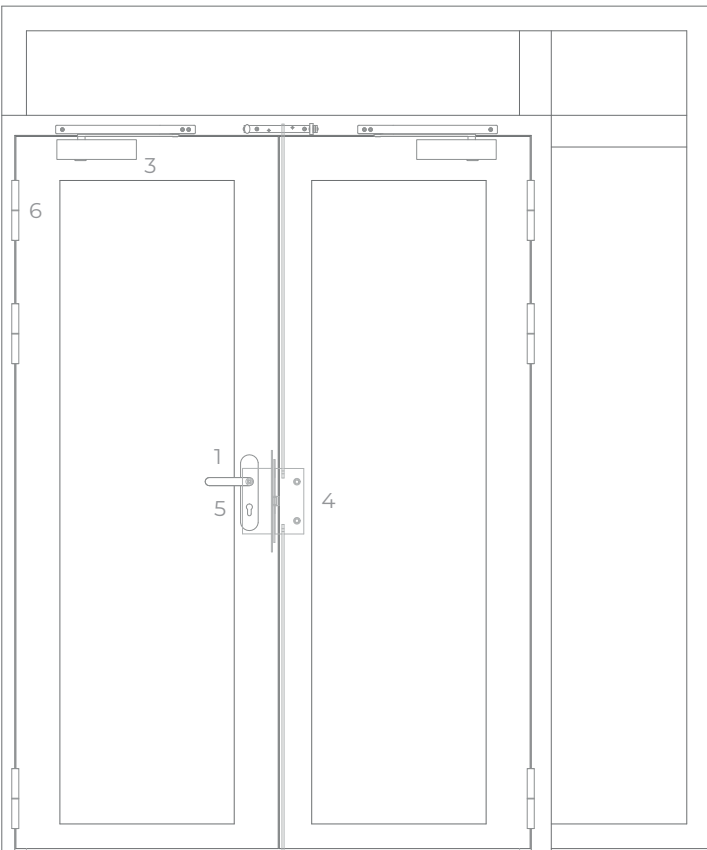
horizontal section



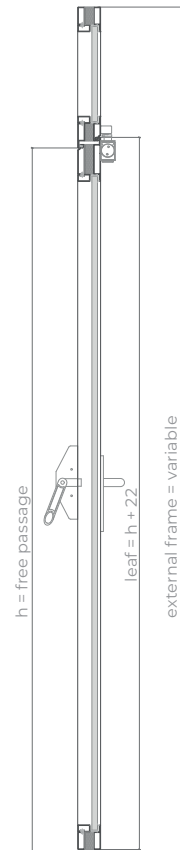
horizontal section



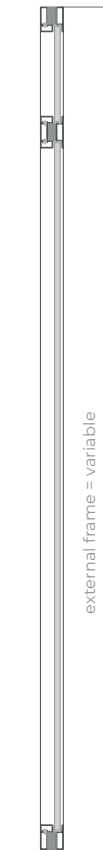
exterior view



exterior view



vertical section door



vertical section partitions



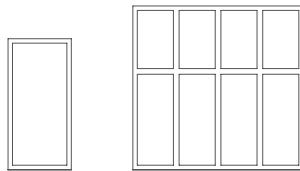
FOGOFIL SYSTEM

WALL PARTITIONS EI30

description

Manufactured according to the TRIA - FOGOFIL construction model, certified in accordance with Standard EN 1634-1. Profile in cold rolled steel, continuously welded, factory treated against corrosion by electrolytic galvanization, including integrated thermal break system, fire resistant glass of the system and galvanized glazing beds with concealed fixation.

specification



model | format

Wall partitions

classification

classification (EN 1634-1)

classification according EN 13501-2

both sides

EI 30

glazed panels dimensions EI 30

(Unlimited width, by using intermediate vertical profiles)

W maximum ⁽¹⁾	1092
H maximum ⁽¹⁾	2760
maximum area	2.74 m ²

⁽¹⁾ W and H should be considered in conjunction with the maximum area

overpanel dimensions (mm)

	type 1 without vertical profile on center	type 2 with vertical Profile on center
W maximum	2950	2530
H maximum	449	828
maximum area	1.2 m ²	1.9 m ²
other dimensions	on request	on request

construction

profile thickness (mm)	65
profile weight (Kg/ m) ⁽²⁾	6
glass thickness (mm)	16 to 25 mm
finishing (standard)	galvanized steel for painting / standard RAL color ⁽³⁾
finishing (optional)	stainless steel

⁽²⁾ panel weight is conditioned by the type of glass

⁽³⁾ RAL colors standard= 7035, 7038, 9005 e 9010



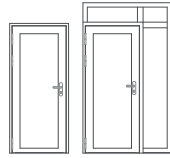
FOGOFIL SYSTEM E160

description

Manufactured according to the TRIA - FOGOFIL construction model, certified in accordance with Standard EN 1634-1. Profile in cold rolled steel, continuously welded, factory treated against corrosion by electrolytic galvanization, including integrated thermal break system, fire resistant glass of the system and galvanized glazing beds with concealed fixation and welded or screwed system hinges.

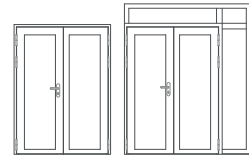
specification

model | format



Glazed single leaf door

Glazed single leaf door
+ overpanel and/or side panel



Glazed double leaf door

Glazed double leaf door
+ overpanel and/or side panel

classification

classification (EN 1634-1)

classification according EN 13501-2

both sides

EI 60

both sides

EI 60

leaf dimensions (mm)

W x H (standard)⁽¹⁾

800 / 900 x 2000 / 2100

1400 / 1600 / 1800 x 2000 / 2100

W maximum⁽¹⁾

1380

1380

H maximum⁽¹⁾

2676

2676

maximum area

3.10 m²

3.10m²

exterior frame (standard)

L + 140 x H + 70

L + 140 x H + 70

⁽¹⁾ W x H = width X height = free passage

⁽¹⁾ W and H should be considered in conjunction with the maximum area

side panels (mm)

W maximum⁽¹⁾

1932

1932

L maximum⁽¹⁾

3590

3590

maximum area

6.01 m²

6.01 m²

⁽¹⁾ W and H should be considered in conjunction with the maximum area

overpanel dimensions (mm)

W maximum ⁽¹⁾	3144	3144
H maximum ⁽¹⁾	894	894
maximum area	2.34 m ²	2.34 m ²
other dimensions	on request	on request

⁽¹⁾ W and H should be considered in conjunction with the maximum area

construction

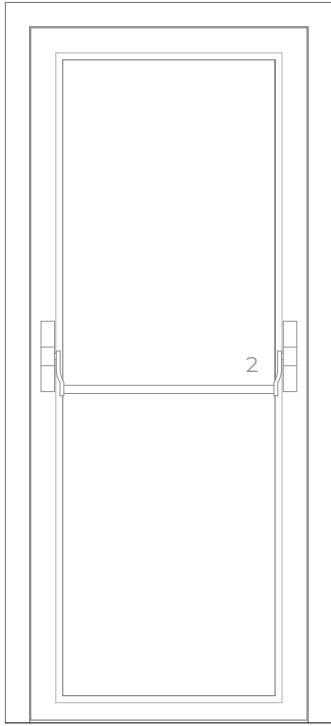
profile thickness(mm)	70	70
leaf weight (kg/ml) ⁽²⁾	7	7
hinges (per leaf) ⁽³⁾	2	2
glass thickness (standard)	the thickness can vary from 25 to 31 mm, according to type of glass EI 60	the thickness can vary from 25 to 31 mm, according to type of glass EI 60
finishing (standard)	galvanized steel for painting / standard RAL color ⁽⁴⁾	galvanized steel for painting / standard RAL color ⁽⁴⁾
finishing (optional)	stainless steel	stainless steel

⁽²⁾ leaf weight is conditioned by the type of glass

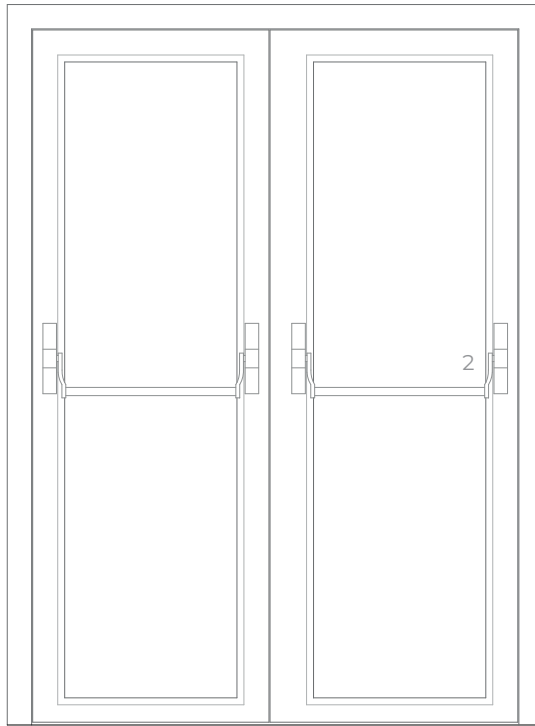
⁽³⁾ the number of hinges, per leaf, may increase depending on the weight, size and intensity of use

⁽⁴⁾ RAL colors standard= 7035, 7038, 9005 e 9010

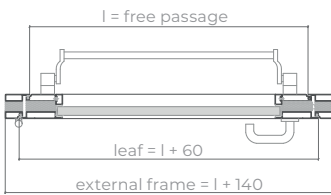




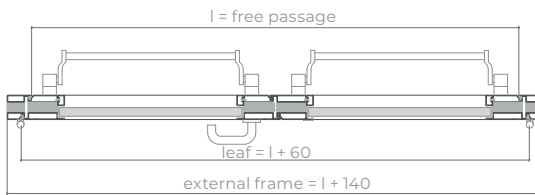
interior view



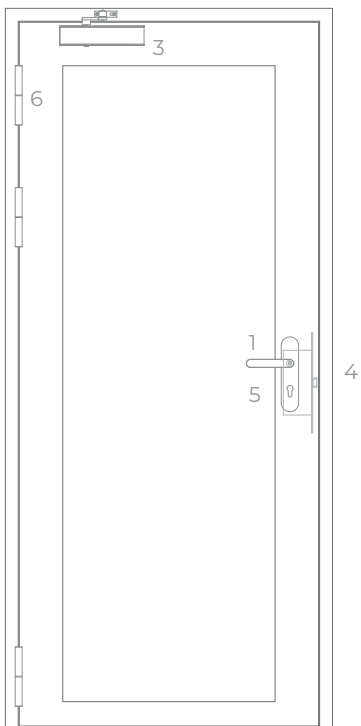
interior view



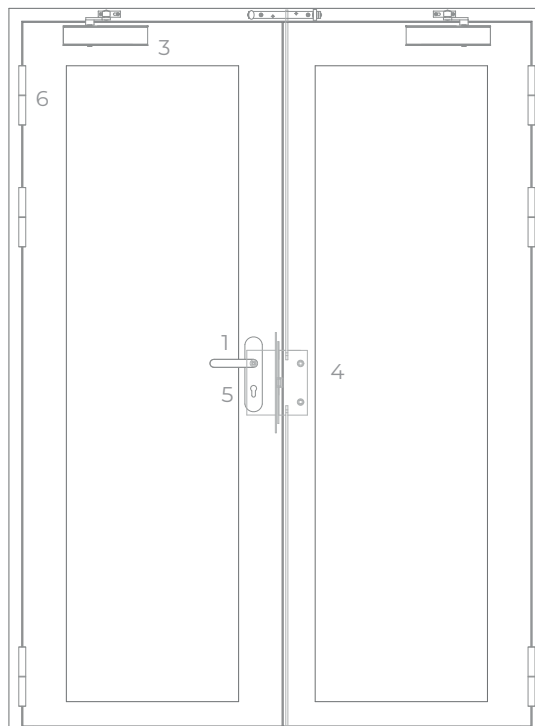
horizontal section



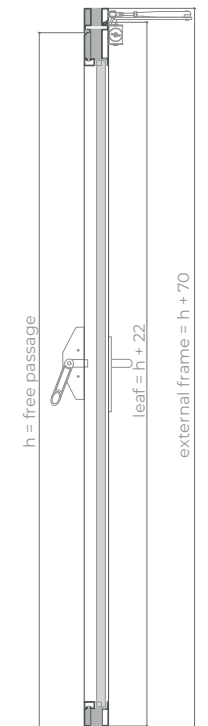
horizontal section



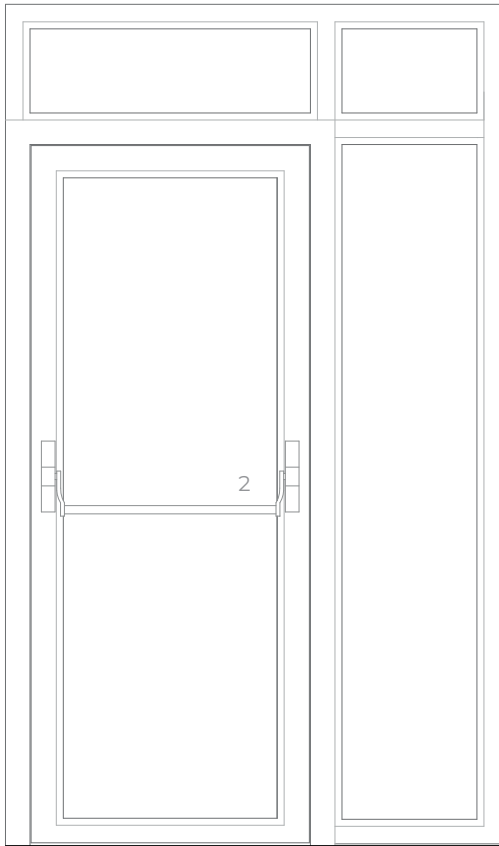
exterior view



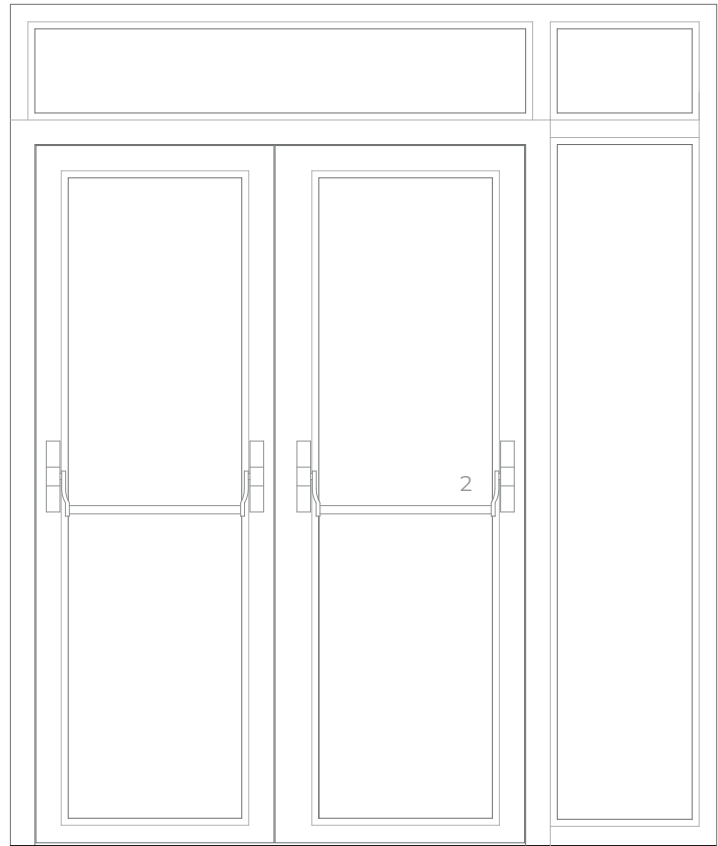
exterior view



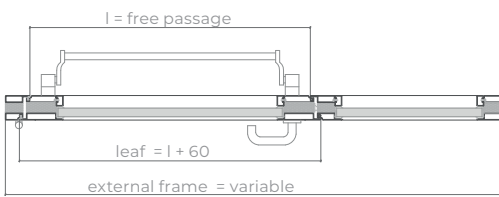
vertical section



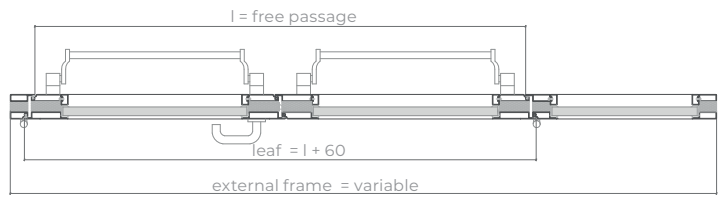
interior view



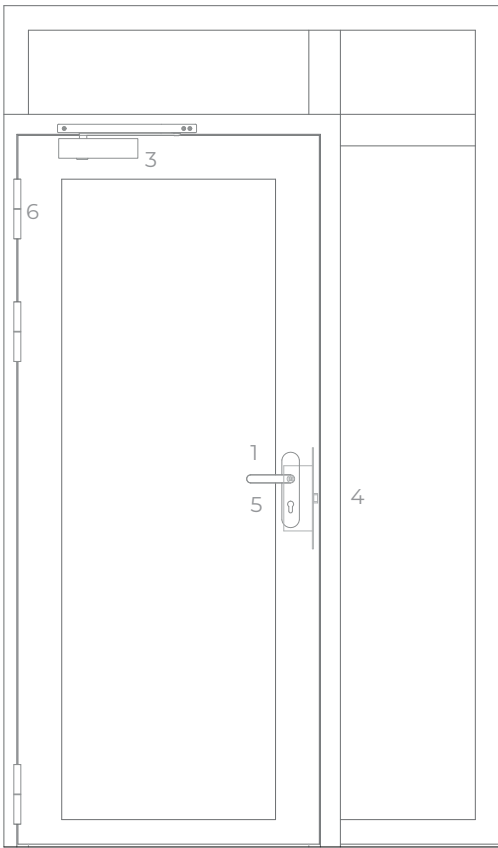
interior view



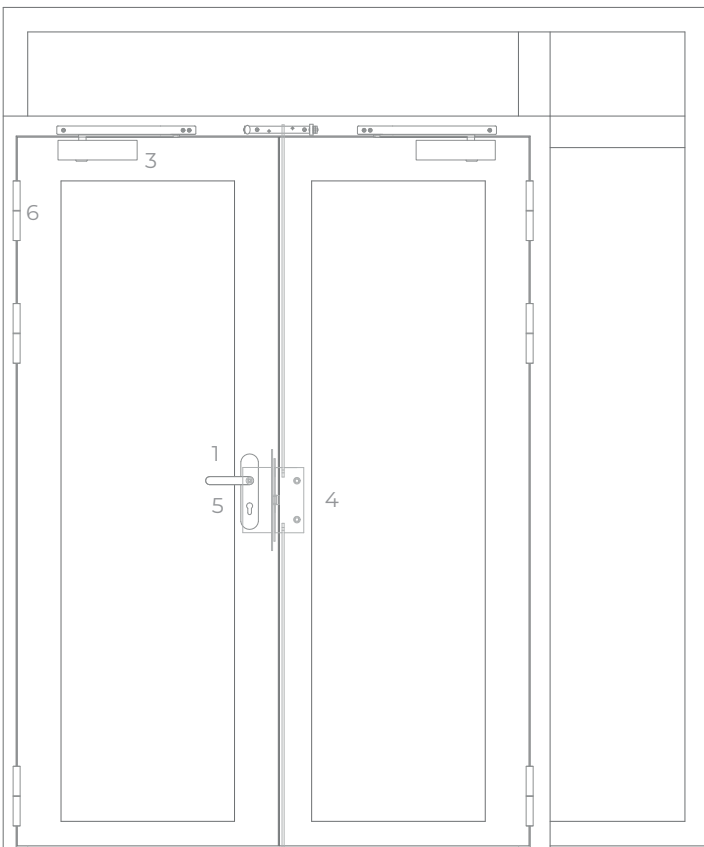
horizontal section



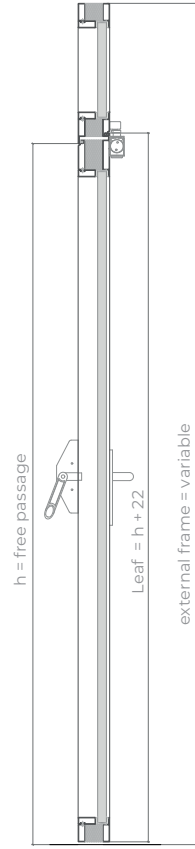
horizontal section



exterior view



exterior view



vertical section door



vertical section partitions



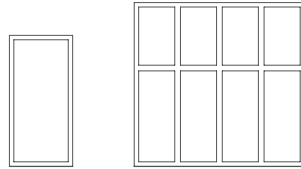
FOGOFIL SYSTEM

WALL PARTITIONS EI60

description

Manufactured according to the TRIA - FOGOFIL construction model, certified in accordance with Standard EN 1634-1. Profile in cold rolled steel, continuously welded, factory treated against corrosion by electrolytic galvanization, including integrated thermal rupture system, fire resistant glass of the system and galvanized glazing beds with concealed fixation

specification



model | format

Wall partitions

classification

classification (EN 1634-1)

classification according EN 13501-2

both sides

EI 60

glazed panel dimensions (mm)

(unlimited width, by using intermediate vertical profiles)

W maximum ⁽¹⁾	1932
H maximum ⁽¹⁾	3590
maximum area	6.01 m ²

⁽¹⁾W and H should be considered in conjunction with the maximum area

overpanel dimensions (mm)

L maximum ⁽¹⁾	3144
H maximum ⁽¹⁾	894
maximum area	2.34 m ²
other dimensions	on request

⁽¹⁾W and H should be considered in conjunction with the maximum area

construction

profile thickness(mm)	70
profile weight(Kg/m) ⁽²⁾	7
glass thickness (mm)	25 to 31 mm
finishing (standard)	galvanized steel for painting / standard RAL color ⁽³⁾
finishing (optional)	stainless steel

⁽²⁾leaf weight is conditioned by the type of glass

⁽³⁾RAL colors standard= 7035, 7038, 9005 e 9010



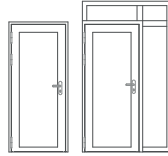
FOGOFIL SYSTEM EI90

description

Manufactured according to the TRIA - FOGOFIL construction model, certified in accordance with Standard EN 1634-1. Profile in cold rolled steel, continuously welded, factory treated against corrosion by electrolytic galvanization, including integrated thermal break system, fire resistant glass of the system, galvanized glazing beds with concealed fixation and welded or bolted system hinges.

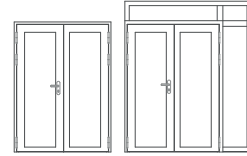
specification

model | format



Glazed single leaf door

Glazed single leaf door +
overpanel and/or side panel



Glazed double leaf door

Glazed double leaf door +
overpanel and/or side panel

classification

classification (EN 1634-1)

classification according EN 13501-2

both sides

EI 90

both sides

EI 90

leaf dimensions (mm)

W x H (standard)⁽¹⁾

800 / 900 x 2000 / 2100

1400 / 1600 / 1800 x 2000 / 2100

W maximum⁽²⁾

1380

1380

H maximum⁽²⁾

2676

2676

maximum area

3.10m²

3.10m²

external frame (standard)

L + 140 x H + 70

L + 140 x H + 70

side panel (mm)

W maximum⁽²⁾

1932

1932

H maximum⁽²⁾

3590

3590

maximum area

6.01m²

6.01m²

over papel dimensions (mm)

W maximum (per leaf) ^(2*)	3144	3144
H maximum (per leaf) ^(2*)	894	894
maximum area	2.34m ²	2.34m ²
other dimensions	on request	on request

^(1*) W x H = width x height = free passage

^(2*) width e height should be considered in conjunction with the maximum area indicated

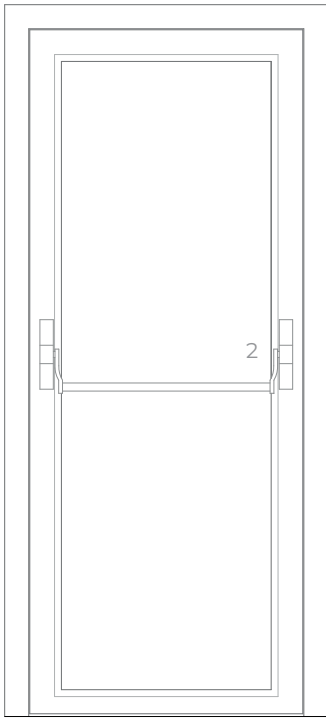
construction

profile thickness (mm)	90	90
profile weight (Kg/ ml) ⁽³⁾	8	8
hinges (per leaf) ⁽⁴⁾	2	2
glass thickness (mm)	the thickness can vary from 40 to 56mm, according to type of glass EI90	the thickness can vary from 40 to 56mm, according to type of glass EI90
finishing (standard)	galvanized steel for painting / standard RAL color ⁽⁵⁾	galvanized steel for painting / standard RAL color ⁽⁵⁾
finishing (optional)	stainless steel (Consult TRIA technical department to evaluate this option).	stainless steel (Consult TRIA technical department to evaluate this option).

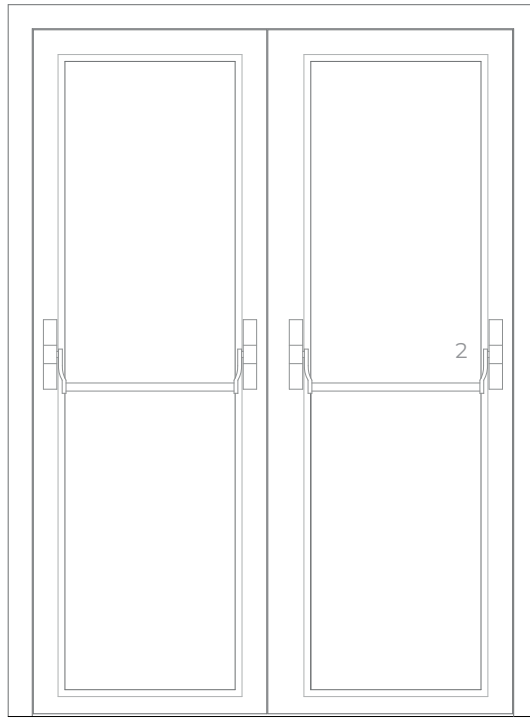
⁽³⁾ leaf weight is conditioned by type of glass

⁽⁴⁾ the number of hinges, per leaf, may be increased depending on the height, size and intensity of use

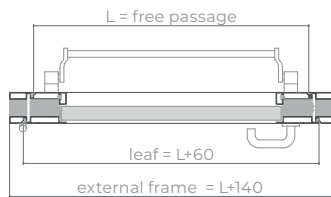
⁽⁵⁾ RAL colors standard= 7035, 7038, 9005 e 9010



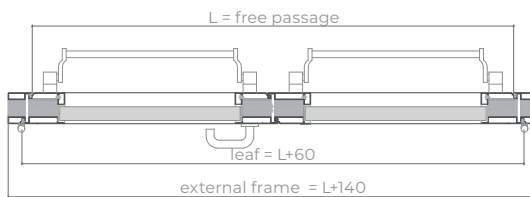
interior view



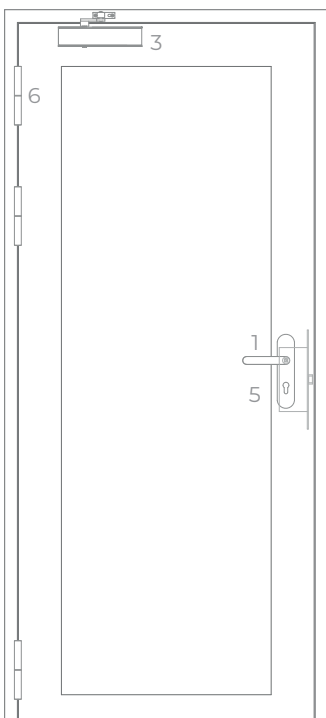
interior view



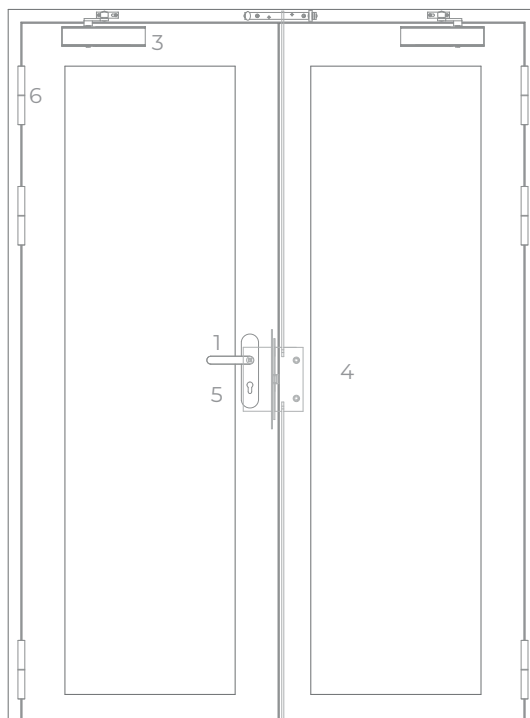
horizontal section



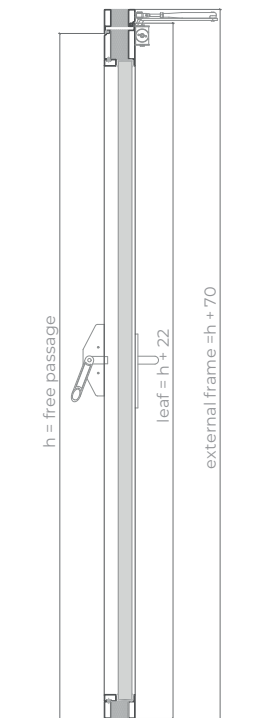
horizontal section



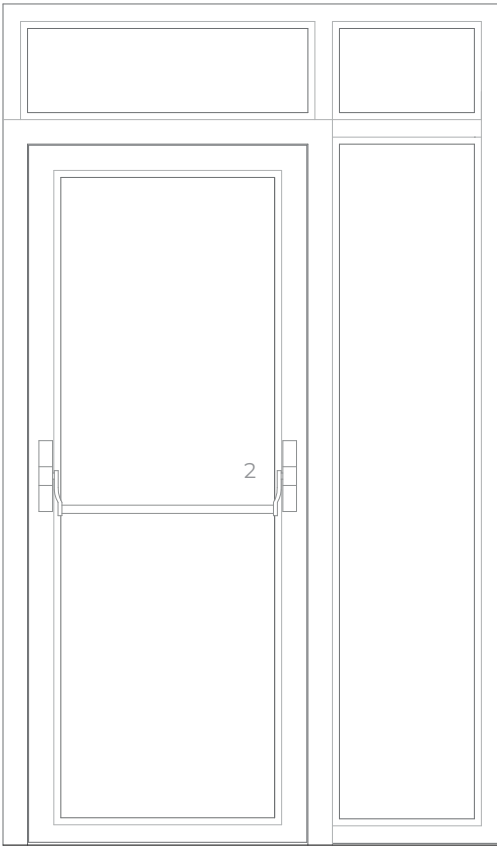
exterior view



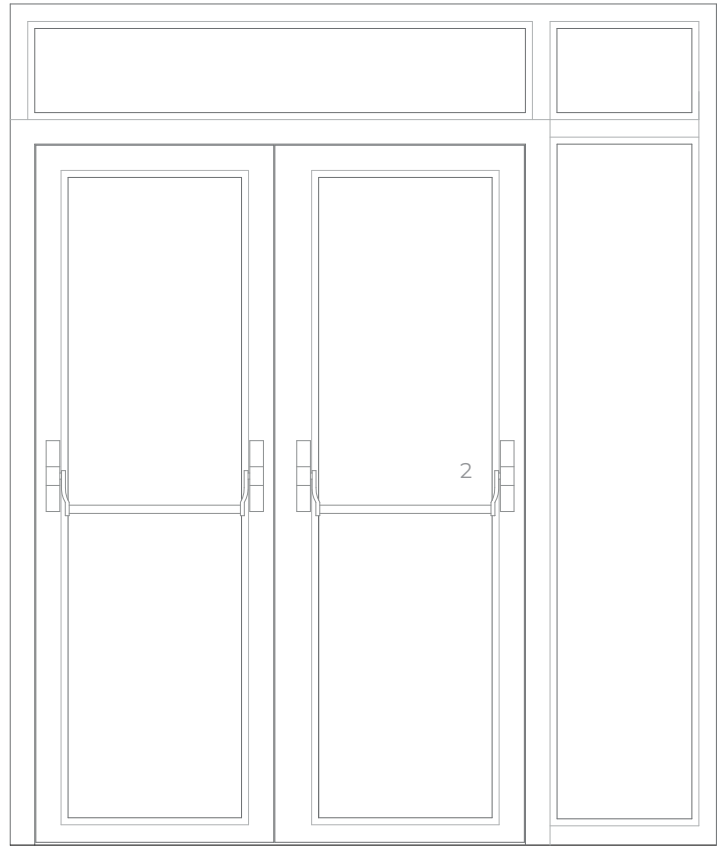
exterior view



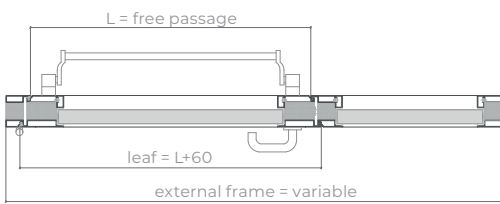
vertical section



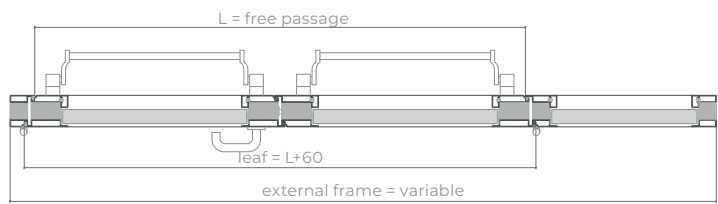
interior view



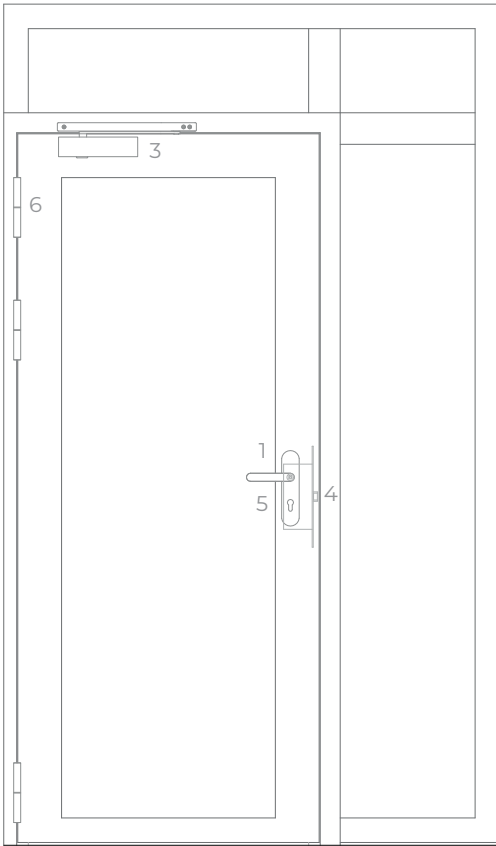
interior view



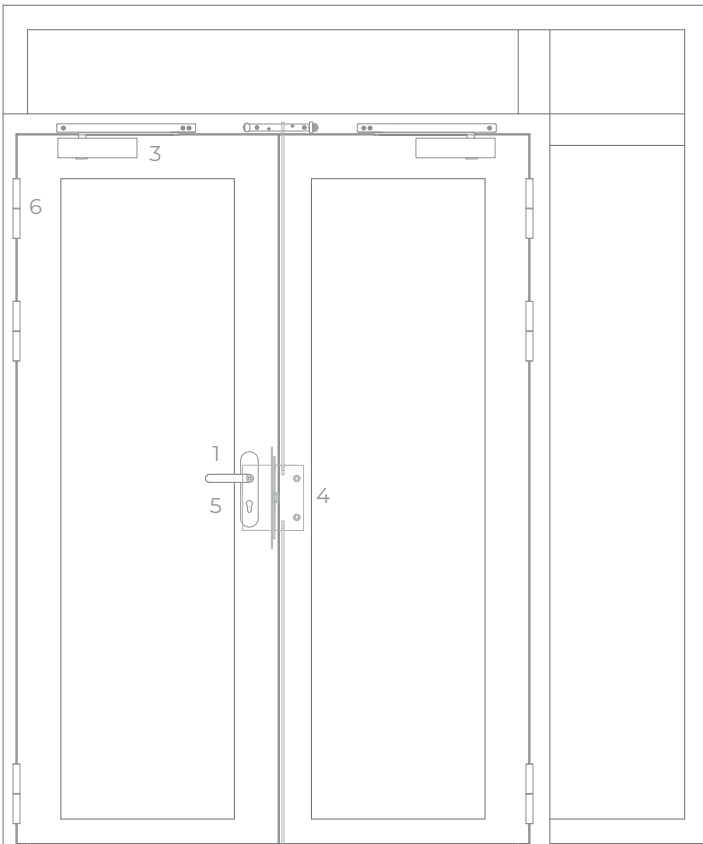
horizontal section



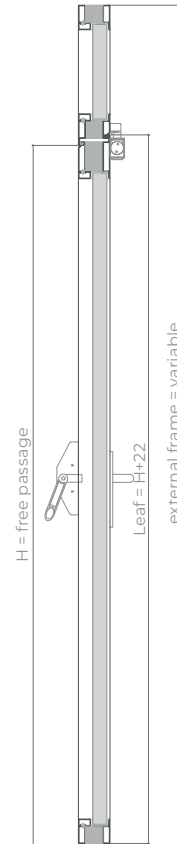
horizontal section



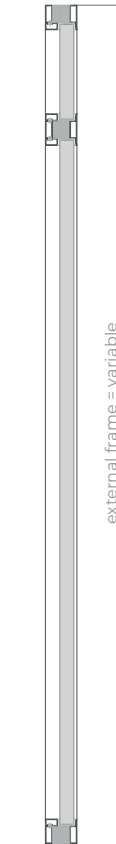
exterior view



exterior view



vertical section door



vertical section partitions



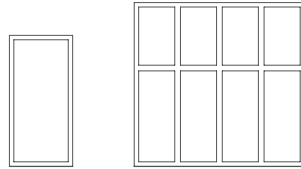
FOGOFIL SYSTEM

WALL PARTITIONS EI90

description

Manufactured according to the TRIA - FOGOFIL construction model, certified in accordance with Standard EN 1634-1. Profile in cold rolled steel, continuously welded, factory treated against corrosion by electrolytic galvanization, including integrated thermal rupture system, fire resistant glass of the system and galvanized glazing beds with concealed fixation.

specification



model | format

Wall partitions

classification

classification (EN 1634-1)

classification according EN 13501-2

both sides

EI 90

glazed panels dimensions

(unlimited width, by using intermediate vertical profiles)

W maximum ⁽¹⁾	1932
H maximum ⁽¹⁾	3590
maximum area	6.01 m ²

⁽¹⁾W and H should be considered in conjunction with the maximum area

overpanel dimensions (mm)

W maximum ⁽¹⁾	3144
H maximum ⁽¹⁾	894
maximum area	2.34 m ²
other dimensions	on request

⁽¹⁾W and H should be considered in conjunction with the maximum area

construction

profile thickness (mm)	90
profile weight (Kg/ ml) ⁽²⁾	6
glass thickness (mm)	40 to 56 mm
finishing (standard)	galvanized steel for painting / standard RAL color ⁽³⁾
finishing (optional)	stainless steel

⁽²⁾leaf weight is conditioned by the type of glass

⁽³⁾RAL colors standard= 7035, 7038, 9005 e 9010



GROUP COMPANY



TRIA - Serviços, Materiais e Equipamentos, SA.
Parque Ind. Manuel Lourenço Ferreira - Lt.43
3450 - 232 Mortágua
//+351 231 927 480 //geral@tria.pt
www.tria.pt

VER.03.20