



TRIA

FOGOFIL SYSTEM - FGP

FIRE GLAZED PARAPET

fixed glazed panel







MODELS

FOGOFIL SYSTEM - FGP

Fire Glazed Parapet
Fixed glazed panel



FOGOFIL SYSTEM - FGP EW 90-ef

description

Continuous Fire Glazed Parapet for installation between structural openings in successive floors of the same building facade, belonging to separate fire compartments to prevent the fire spread of building outside to ensures the fire resistance class of the glass / frame assembly E 90 and EW 90.

Fire Glazed Parapet glazed firewalls to prevent the spread of flames from any fire on the lower floors, preventing it from spreading to the upper floors from outside the building.

Fire-resistant guard made of TRIA Fogofil profile, made of galvanized steel profile, cold roll forming, including fire insulated core, with 65x70 mm and galvanized glazing beds with concealed fixation 35x20mm.

specification



model | typology

FOGOFIL SYSTEM- FGP
Fire Glazed Parapet

Fixed glazed panel

classification achieved when tested

Fire resistance tests (EN1364-1)

EW 90-ef

Classification according to standard 13501-2

dimensions (mm)

L x H (standard)⁽¹⁾

by request

L maximum⁽²⁾

3300

H maximum⁽²⁾

1320

maximum area

3.66m²

construction

profile thickness (mm)

65

profile weight (kg / ml)⁽³⁾

6

glass thickness (mm)

13

glass weight (kg / m²)

31

finishing (standard)

Steel electrocoating paint/ lacquering in standard RAL color⁽⁴⁾

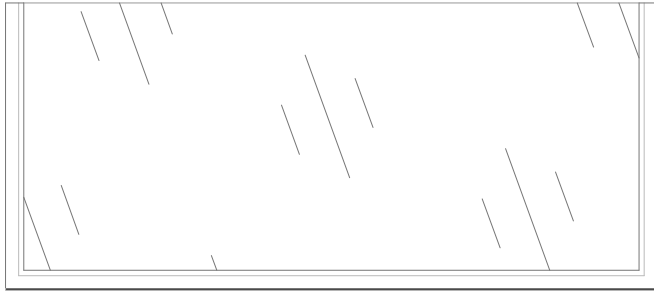
finishing (optional)

stainless steel

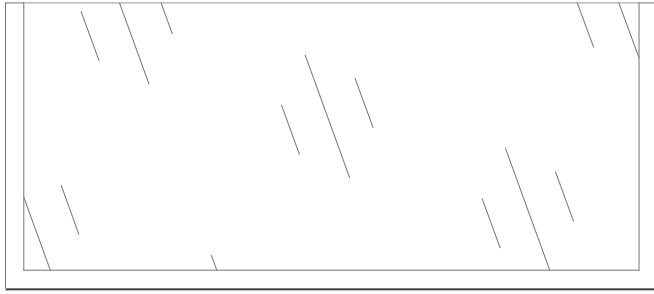
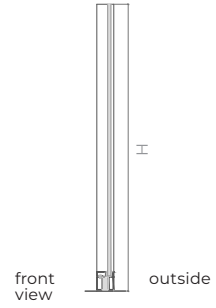
⁽¹⁾ W x H= width x height = outside aro

⁽²⁾ width e Height should be considered in conjunction with the maximum area indicated

⁽⁴⁾ RAL color standard= 7035, 7038, 9005 and 9010

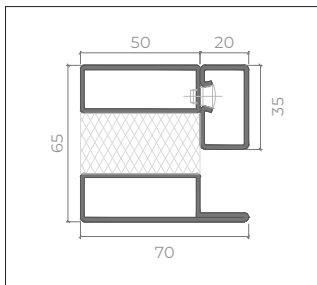


front view

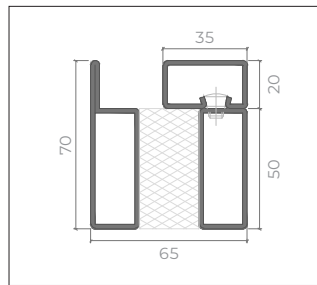


outside

Profile

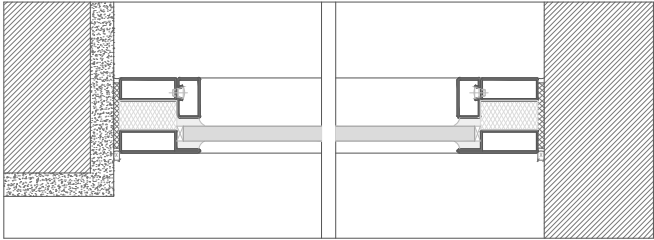


profile - vertical



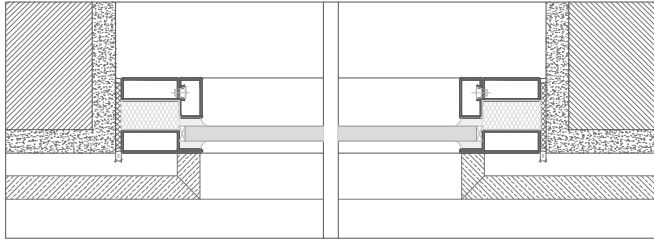
profile - horizontal

Details

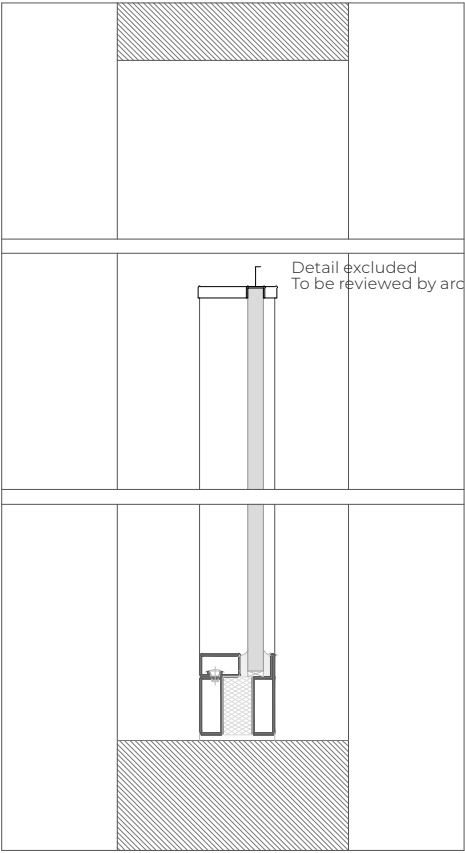


X - 5 mm gap
fixing on masonry walls

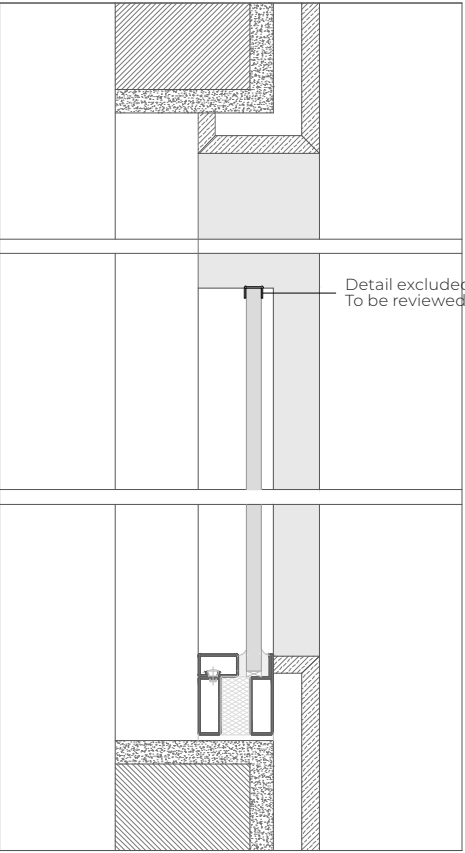
X - 5 mm gap
fixing on concrete walls



X - 5 mm gap
example of facade application



vertical section



vertical section



GROUP COMPANY



TRIA - Serviços, Materiais e Equipamentos, SA.
Parque Ind. Manuel Lourenço Ferreira - Lt.43
3450 - 232 Mortágua
//+351 231 927 480 //geral@tria.pt
www.tria.pt

VER.03.20